



# AltaGLOW

011H015023 | 80FFRAR

PEAK FSCNTR AltaGLOW-ET  
 FASCINATOR x AltaTOPSHOT x SILVER  
 HOAUSM003149336846 | DOB 14/06/2018  
 Genetic Code: A22

[View USA Proof](#)



**BPI 410 62%**

**HWI 314 55%**

**TWI 381 61%**

**TYPE PROOF** 0 dtrs / 0 herds Rel. 53% (ABV August 2020)

Overall Type	103	Foot Angle	95
Mammary System	103	Heel Depth	102
Feet & Legs	98	Rear Set	99
Rump	103	Rear Leg Rear View	99
Dairy Strength	98	Udder Depth	104
Stature	105	Fore Attachment	102
Udder Texture	98	Rear Attachment Height	105
Bone Quality	104	Rear Attachment Width	100
Angularity	98	Centre Ligament	101
Muzzle Width	96	Teat Placement (front)	100
Body Depth	94	Teat Placement (rear)	99
Chest Width	97	Teat Length	99
Pin Width	100	Loin Strength	103
Pin Set	102		

**FEED EFFICIENCY**

Liveweight	101	56 %R	Feed Saved	-112	30 %R
------------	-----	-------	------------	------	-------

**ASI 240**

**PRODUCTION** 0 dtrs / 0 herds Rel. 74% (ABV August 2020)

Milk	703	L		
Fat	48	kg		+ .27 %
Protein	32	kg		+ .25 %

**HEALTH**

Cell Count	162	64	%R
Survival	111	45	%R
Res Survival	101	50	%R
Dtr. Fertility	113	42	%R
Calving Ease	104	59	%R
Gestation Length	-9	62	%R
Mastitis Resistance	105	57	%R

**WORKABILITIES** 0 dtrs / 0 herds Rel. 57%

Milking Speed	102
Temperament	101
Likability	105



# AltaCRAZED

011H015391 | 80FFSCG

PEAK AltaCRAZED-ET  
 AltaCABOT x FRAZZLED x MONTROSS  
 H0840M003205436551 | DOB 18/06/2019  
 Genetic Code: A22

[View USA Proof](#)



**BPI 396 61%**

**HWI 337 54%**

**TWI 393 60%**

**TYPE PROOF** 0 dtrs / 0 herds Rel. 51% (ABV August 2020)

Overall Type	106	Foot Angle	98
Mammary System	104	Heel Depth	100
Feet & Legs	99	Rear Set	101
Rump	100	Rear Leg Rear View	100
Dairy Strength	99	Udder Depth	103
Stature	99	Fore Attachment	104
Udder Texture	97	Rear Attachment Height	107
Bone Quality	98	Rear Attachment Width	100
Angularity	97	Centre Ligament	102
Muzzle Width	100	Teat Placement (front)	100
Body Depth	97	Teat Placement (rear)	102
Chest Width	102	Teat Length	97
Pin Width	101	Loin Strength	98
Pin Set	99		

**FEED EFFICIENCY**

Liveweight	99	55 %R	Feed Saved	48	29 %R
------------	----	-------	------------	----	-------

**ASI 203**

**PRODUCTION** 0 dtrs / 0 herds Rel. 72% (ABV August 2020)

Milk	563	L		
Fat	49	kg		+ .35 %
Protein	25	kg		+ .19 %

**HEALTH**

Cell Count	180	63	%R
Survival	110	43	%R
Res Survival	102	49	%R
Dtr. Fertility	110	42	%R
Calving Ease	102	58	%R
Gestation Length	-5	62	%R
Mastitis Resistance	109	56	%R

**WORKABILITIES** 0 dtrs / 0 herds Rel. 55%

Milking Speed	99
Temperament	104
Likability	104



# AltaMEDERA

011H012315 | 80FFPJU

PEAK AltaMEDERA-ET  
 BANDARES x DELTA x RANSOM  
 H0840M003145230106 | DOB 17/09/2017  
 Genetic Code: A22

[View USA Proof](#)



**BPI 395 64%**

**HWI 332 58%**

**TWI 393 63%**

**TYPE PROOF** 0 dtrs / 0 herds Rel. 57% (ABV August 2020)

Overall Type	104	Foot Angle	100
Mammary System	108	Heel Depth	101
Feet & Legs	102	Rear Set	100
Rump	99	Rear Leg Rear View	104
Dairy Strength	94	Udder Depth	110
Stature	103	Fore Attachment	106
Udder Texture	102	Rear Attachment Height	109
Bone Quality	104	Rear Attachment Width	100
Angularity	95	Centre Ligament	103
Muzzle Width	97	Teat Placement (front)	106
Body Depth	92	Teat Placement (rear)	102
Chest Width	99	Teat Length	83
Pin Width	98	Loin Strength	98
Pin Set	99		

**FEED EFFICIENCY**

Liveweight	100	60 %R	Feed Saved	28	31 %R
------------	-----	-------	------------	----	-------

**ASI 212**

**PRODUCTION** 0 dtrs / 0 herds Rel. 74% (ABV August 2020)

Milk	494	L		
Fat	43	kg	+ .32	%
Protein	27	kg	+ .25	%

**HEALTH**

Cell Count	167	67	%R
Survival	111	49	%R
Res Survival	100	54	%R
Dtr. Fertility	108	50	%R
Calving Ease	103	70	%R
Gestation Length	-5	62	%R
Mastitis Resistance	107	63	%R

**WORKABILITIES** 0 dtrs / 0 herds Rel. 60%

Milking Speed	103
Temperament	101
Likability	104



# AltaZAZZLE

011H015036 | 80FFRDS

PEAK AltaZAZZLE-ET  
 MARIUS x AltaTOPSHOT x SILVER  
 H0840M003200824445 | DOB 27/09/2018  
 Genetic Code: A12

[View USA Proof](#)



**BPI 374 61%**

**HWI 296 54%**

**TWI 345 60%**

**TYPE PROOF** 0 dtrs / 0 herds Rel. 51% (ABV August 2020)

Overall Type	100	Foot Angle	95
Mammary System	101	Heel Depth	101
Feet & Legs	98	Rear Set	104
Rump	101	Rear Leg Rear View	100
Dairy Strength	93	Udder Depth	103
Stature	101	Fore Attachment	102
Udder Texture	97	Rear Attachment Height	103
Bone Quality	105	Rear Attachment Width	98
Angularity	96	Centre Ligament	101
Muzzle Width	96	Teat Placement (front)	102
Body Depth	92	Teat Placement (rear)	96
Chest Width	94	Teat Length	107
Pin Width	96	Loin Strength	100
Pin Set	97		

**FEED EFFICIENCY**

Liveweight	97	55 %R	Feed Saved	-6	29 %R
------------	----	-------	------------	----	-------

**ASI 231**

**PRODUCTION** 0 dtrs / 0 herds Rel. 72% (ABV August 2020)

Milk	701	L		
Fat	53	kg	+ .34	%
Protein	30	kg	+ .20	%

**HEALTH**

Cell Count	168	63	%R
Survival	111	43	%R
Res Survival	107	49	%R
Dtr. Fertility	107	41	%R
Calving Ease	102	58	%R
Gestation Length	-6	62	%R
Mastitis Resistance	105	56	%R

**WORKABILITIES** 0 dtrs / 0 herds Rel. 55%

Milking Speed	103
Temperament	103
Likability	105



# AltaFLASHBACK

011H015202 | 80FFRES

PEAK AltaFLASHBACK-ET  
 POSITIVE x AltaROBSON x SILVER  
 H0840M003200824169 | DOB 08/12/2018  
 Genetic Code: A22

[View USA Proof](#)



**BPI 372 59%**

**HWI 283 52%**

**TWI 391 58%**

**TYPE PROOF** 0 dtrs / 0 herds Rel. 48% (ABV August 2020)

Overall Type	107	Foot Angle	100
Mammary System	108	Heel Depth	100
Feet & Legs	99	Rear Set	99
Rump	101	Rear Leg Rear View	99
Dairy Strength	99	Udder Depth	110
Stature	107	Fore Attachment	108
Udder Texture	99	Rear Attachment Height	110
Bone Quality	105	Rear Attachment Width	99
Angularity	100	Centre Ligament	104
Muzzle Width	99	Teat Placement (front)	104
Body Depth	96	Teat Placement (rear)	108
Chest Width	97	Teat Length	93
Pin Width	98	Loin Strength	102
Pin Set	101		

**FEED EFFICIENCY**

Liveweight	103	52 %R	Feed Saved	-137	28 %R
------------	-----	-------	------------	------	-------

**ASI 215**

**PRODUCTION** 0 dtrs / 0 herds Rel. 71% (ABV August 2020)

Milk	313	L		
Fat	42	kg	+ .41	%
Protein	25	kg	+ .31	%

**HEALTH**

Cell Count	170	60	%R
Survival	112	40	%R
Res Survival	100	46	%R
Dtr. Fertility	107	39	%R
Calving Ease	102	57	%R
Gestation Length	-5	62	%R
Mastitis Resistance	106	54	%R

**WORKABILITIES** 0 dtrs / 0 herds Rel. 53%

Milking Speed	101
Temperament	101
Likability	105



# AltaVITOR

011H015329 | 80FFSCA

PEAK AltaVITOR-ET  
 CHALLENGER x JEDI x BOMBERO  
 H0840M003205436399 | DOB 13/04/2019  
 Genetic Code: A22

[View USA Proof](#)



**BPI 366 61%**

**HWI 293 54%**

**TWI 350 60%**

**TYPE PROOF** 0 dtrs / 0 herds Rel. 51% (ABV August 2020)

Overall Type	102	Foot Angle	98
Mammary System	105	Heel Depth	105
Feet & Legs	101	Rear Set	99
Rump	99	Rear Leg Rear View	99
Dairy Strength	98	Udder Depth	105
Stature	104	Fore Attachment	105
Udder Texture	97	Rear Attachment Height	108
Bone Quality	102	Rear Attachment Width	97
Angularity	96	Centre Ligament	103
Muzzle Width	97	Teat Placement (front)	103
Body Depth	97	Teat Placement (rear)	102
Chest Width	98	Teat Length	102
Pin Width	98	Loin Strength	97
Pin Set	96		

**FEED EFFICIENCY**

Liveweight	102	55 %R	Feed Saved	-76	29 %R
------------	-----	-------	------------	-----	-------

**ASI 195**

**PRODUCTION** 0 dtrs / 0 herds Rel. 73% (ABV August 2020)

Milk	667	L		
Fat	33	kg	+ .06	%
Protein	29	kg	+ .21	%

**HEALTH**

Cell Count	159	63	%R
Survival	110	43	%R
Res Survival	101	49	%R
Dtr. Fertility	111	41	%R
Calving Ease	103	58	%R
Gestation Length	-3	62	%R
Mastitis Resistance	101	57	%R

**WORKABILITIES** 0 dtrs / 0 herds Rel. 56%

Milking Speed	103
Temperament	104
Likability	106



**BPI 364 66%**  
**HWI 290 60%**  
**TWI 355 65%**

**TYPE PROOF** 0 dtrs / 0 herds Rel. 60% (ABV August 2020)

Overall Type	102	Foot Angle	104
Mammary System	103	Heel Depth	101
Feet & Legs	103	Rear Set	96
Rump	100	Rear Leg Rear View	101
Dairy Strength	96	Udder Depth	106
Stature	105	Fore Attachment	106
Udder Texture	99	Rear Attachment Height	104
Bone Quality	103	Rear Attachment Width	95
Angularity	94	Centre Ligament	100
Muzzle Width	102	Teat Placement (front)	103
Body Depth	95	Teat Placement (rear)	98
Chest Width	99	Teat Length	98
Pin Width	93	Loin Strength	102
Pin Set	101		

**FEED EFFICIENCY**

Liveweight	101	63 %R	Feed Saved	-55	32 %R
------------	-----	-------	------------	-----	-------

# AltaTBAY

011H012246 | 80FFPD7

PEAK AltaTBAY-ET  
 CHARLEY x SILVER x AltaOAK  
 H0840M003145229969 | DOB 28/06/2017  
 Genetic Code: A22

[View USA Proof](#)

**A2**

**ASI 201**

**PRODUCTION** 0 dtrs / 0 herds Rel. 76% (ABV August 2020)

Milk	813	L		
Fat	36	kg	+0.02	%
Protein	32	kg	+0.18	%

**HEALTH**

Cell Count	170	68	%R
Survival	111	52	%R
Res Survival	101	57	%R
Dtr. Fertility	108	52	%R
Calving Ease	104	72	%R
Gestation Length	-5	72	%R
Mastitis Resistance	106	64	%R

**WORKABILITIES** 0 dtrs / 0 herds Rel. 63%

Milking Speed	103
Temperament	103
Likability	105



**BPI 363 64%**  
**HWI 310 57%**  
**TWI 329 62%**

**TYPE PROOF** 0 dtrs / 0 herds Rel. 55% (ABV August 2020)

Overall Type	100	Foot Angle	93
Mammary System	101	Heel Depth	97
Feet & Legs	95	Rear Set	102
Rump	99	Rear Leg Rear View	98
Dairy Strength	94	Udder Depth	108
Stature	103	Fore Attachment	102
Udder Texture	103	Rear Attachment Height	104
Bone Quality	103	Rear Attachment Width	96
Angularity	94	Centre Ligament	106
Muzzle Width	100	Teat Placement (front)	95
Body Depth	91	Teat Placement (rear)	99
Chest Width	93	Teat Length	98
Pin Width	99	Loin Strength	95
Pin Set	99		

**FEED EFFICIENCY**

Liveweight	98	59 %R	Feed Saved	30	31 %R
------------	----	-------	------------	----	-------

# AltaWARRANT

011H012418 | 80FFRAS

PEAK AltaWARRANT-ET  
 GUARANTEE x JEDI x RACER  
 H0840M003149335018 | DOB 21/04/2018  
 Genetic Code: A12

[View USA Proof](#)



**ASI 173**

**PRODUCTION** 0 dtrs / 0 herds Rel. 74% (ABV August 2020)

Milk	582	L		
Fat	18	kg	-0.10	%
Protein	29	kg	+0.25	%

**HEALTH**

Cell Count	168	66	%R
Survival	111	46	%R
Res Survival	101	52	%R
Dtr. Fertility	112	45	%R
Calving Ease	104	58	%R
Gestation Length	-6	63	%R
Mastitis Resistance	107	57	%R

**WORKABILITIES** 0 dtrs / 0 herds Rel. 58%

Milking Speed	102
Temperament	103
Likability	105

# AltaWHEELHOUSE

011H015365 | 80FFSCJ

PEAK WHEELHOUSE-ET  
PURSUIT x DUKE x RUBICON  
H0840M003209641362 | DOB 02/09/2019  
Genetic Code: A22

[View USA Proof](#)



**BPI 360 60%**  
**HWI 288 53%**  
**TWI 350 58%**

## TYPE PROOF 0 dtrs / 0 herds Rel. 49% (ABV August 2020)

Overall Type	103	Foot Angle	98
Mammary System	107	Heel Depth	101
Feet & Legs	101	Rear Set	94
Rump	99	Rear Leg Rear View	103
Dairy Strength	98	Udder Depth	104
Stature	100	Fore Attachment	106
Udder Texture	94	Rear Attachment Height	110
Bone Quality	97	Rear Attachment Width	102
Angularity	96	Centre Ligament	100
Muzzle Width	101	Teat Placement (front)	103
Body Depth	99	Teat Placement (rear)	102
Chest Width	103	Teat Length	90
Pin Width	100	Loin Strength	101
Pin Set	100		

## FEED EFFICIENCY

Liveweight	101	53 %R	Feed Saved	-60	28 %R
------------	-----	-------	------------	-----	-------

## ASI 199

## PRODUCTION 0 dtrs / 0 herds Rel. 71% (ABV August 2020)

Milk	628	L		
Fat	40	kg	+ .20	%
Protein	27	kg	+ .20	%

## HEALTH

Cell Count	157	61	%R
Survival	110	41	%R
Res Survival	101	47	%R
Dtr. Fertility	110	39	%R
Calving Ease	104	56	%R
Gestation Length	-5	61	%R
Mastitis Resistance	99	53	%R

## WORKABILITIES 0 dtrs / 0 herds Rel. 53%

Milking Speed	101
Temperament	104
Likability	106



**BPI 355 60%**  
**HWI 279 53%**  
**TWI 340 58%**

## TYPE PROOF 0 dtrs / 0 herds Rel. 49% (ABV August 2020)

Overall Type	102	Foot Angle	102
Mammary System	104	Heel Depth	102
Feet & Legs	100	Rear Set	104
Rump	101	Rear Leg Rear View	101
Dairy Strength	97	Udder Depth	107
Stature	105	Fore Attachment	103
Udder Texture	102	Rear Attachment Height	105
Bone Quality	108	Rear Attachment Width	96
Angularity	100	Centre Ligament	104
Muzzle Width	95	Teat Placement (front)	104
Body Depth	94	Teat Placement (rear)	106
Chest Width	90	Teat Length	96
Pin Width	99	Loin Strength	98
Pin Set	98		

## FEED EFFICIENCY

Liveweight	99	52 %R	Feed Saved	-49	28 %R
------------	----	-------	------------	-----	-------

# AltaBRISBY

011H015373 | 70FFS62

PEAK AltaBRISBY-ET  
AltaLAWSON x AltaTOPSHOT x DELTA  
HOCANM000013353734 | DOB 09/04/2019  
Genetic Code: A22

[View USA Proof](#)



## ASI 206

## PRODUCTION 0 dtrs / 0 herds Rel. 71% (ABV August 2020)

Milk	396	L		
Fat	49	kg	+ .46	%
Protein	23	kg	+ .23	%

## HEALTH

Cell Count	173	61	%R
Survival	111	40	%R
Res Survival	105	46	%R
Dtr. Fertility	107	38	%R
Calving Ease	104	59	%R
Gestation Length	-5	63	%R
Mastitis Resistance	108	54	%R

## WORKABILITIES 0 dtrs / 0 herds Rel. 53%

Milking Speed	100
Temperament	103
Likability	104



# AltaCUCHILLO

011H012188 | 80FFPCB

MATCREST AltaCUCHILLO-ET  
 BANDARES x DELTA x SUPERSIRE  
 H0840M003140239377 | DOB 03/03/2017  
 Genetic Code: A22

[View USA Proof](#)



**BPI 352 66%**  
**HWI 310 59%**  
**TWI 350 64%**

**TYPE PROOF** 0 dtrs / 0 herds Rel. 58% (ABV August 2020)

Overall Type	103	Foot Angle	99
Mammary System	109	Heel Depth	103
Feet & Legs	102	Rear Set	93
Rump	98	Rear Leg Rear View	104
Dairy Strength	95	Udder Depth	107
Stature	102	Fore Attachment	105
Udder Texture	103	Rear Attachment Height	110
Bone Quality	102	Rear Attachment Width	103
Angularity	95	Centre Ligament	104
Muzzle Width	101	Teat Placement (front)	105
Body Depth	95	Teat Placement (rear)	103
Chest Width	98	Teat Length	95
Pin Width	99	Loin Strength	98
Pin Set	100		

**FEED EFFICIENCY**

Liveweight	99	62 %R	Feed Saved	17	32 %R
------------	----	-------	------------	----	-------

**ASI 151**

**PRODUCTION** 0 dtrs / 0 herds Rel. 76% (ABV August 2020)

Milk	794	L		
Fat	32	kg		-.03 %
Protein	25	kg		+.07 %

**HEALTH**

Cell Count	166	68	%R
Survival	110	50	%R
Res Survival	98	55	%R
Dtr. Fertility	109	50	%R
Calving Ease	100	75	%R
Gestation Length	-2	62	%R
Mastitis Resistance	105	64	%R

**WORKABILITIES** 0 dtrs / 0 herds Rel. 61%

Milking Speed	104
Temperament	103
Likability	105



# AltaNIXIE

011H012285 | 80FFPB7

AARDEMA AltaNIXIE-ET  
 AltaROBSON x YODER x LIQUID GOLD  
 H0840M003138766709 | DOB 22/05/2017  
 Genetic Code: A22

[View USA Proof](#)



**BPI 349 64%**  
**HWI 275 57%**  
**TWI 352 63%**

**TYPE PROOF** 0 dtrs / 0 herds Rel. 55% (ABV August 2020)

Overall Type	102	Foot Angle	100
Mammary System	106	Heel Depth	103
Feet & Legs	102	Rear Set	100
Rump	100	Rear Leg Rear View	103
Dairy Strength	96	Udder Depth	109
Stature	104	Fore Attachment	107
Udder Texture	102	Rear Attachment Height	106
Bone Quality	109	Rear Attachment Width	97
Angularity	99	Centre Ligament	102
Muzzle Width	95	Teat Placement (front)	106
Body Depth	95	Teat Placement (rear)	102
Chest Width	94	Teat Length	91
Pin Width	100	Loin Strength	97
Pin Set	98		

**FEED EFFICIENCY**

Liveweight	99	59 %R	Feed Saved	-8	31 %R
------------	----	-------	------------	----	-------

**ASI 214**

**PRODUCTION** 0 dtrs / 0 herds Rel. 75% (ABV August 2020)

Milk	-104	L		
Fat	43	kg		+.68 %
Protein	18	kg		+.40 %

**HEALTH**

Cell Count	153	66	%R
Survival	110	46	%R
Res Survival	100	52	%R
Dtr. Fertility	104	46	%R
Calving Ease	103	75	%R
Gestation Length	-2	73	%R
Mastitis Resistance	104	61	%R

**WORKABILITIES** 0 dtrs / 0 herds Rel. 58%

Milking Speed	104
Temperament	103
Likability	106



# AltaAROLDIS

011H012161 | 80FFPB6

PEAK AltaAROLDIS-ET  
AltaROBSON x YODER x MCCUTCHEN  
H0840M00314-2181110 | DOB 23/04/2017  
Genetic Code: A2

[View USA Proof](#)

A2

**BPI 347 64%**

**HWI 271 57%**

**TWI 344 63%**

**TYPE PROOF** 0 dtrs / 0 herds Rel. 56% (ABV August 2020)

Overall Type	102	Foot Angle	103
Mammary System	103	Heel Depth	101
Feet & Legs	104	Rear Set	97
Rump	97	Rear Leg Rear View	105
Dairy Strength	94	Udder Depth	108
Stature	101	Fore Attachment	106
Udder Texture	99	Rear Attachment Height	106
Bone Quality	105	Rear Attachment Width	96
Angularity	95	Centre Ligament	103
Muzzle Width	96	Teat Placement (front)	100
Body Depth	93	Teat Placement (rear)	99
Chest Width	94	Teat Length	96
Pin Width	96	Loin Strength	94
Pin Set	94		

**FEED EFFICIENCY**

Liveweight	97	59 %R	Feed Saved	-29	31 %R
------------	----	-------	------------	-----	-------

**ASI 216**

**PRODUCTION** 0 dtrs / 0 herds Rel. 75% (ABV August 2020)

Milk	409	L		
Fat	44	kg	+ .39	%
Protein	26	kg	+ .28	%

**HEALTH**

Cell Count	161	67	%R
Survival	111	46	%R
Res Survival	105	52	%R
Dtr. Fertility	105	47	%R
Calving Ease	103	92	%R
Gestation Length	-6	93	%R
Mastitis Resistance	104	61	%R

**WORKABILITIES** 0 dtrs / 0 herds Rel. 58%

Milking Speed	102
Temperament	104
Likability	106



# AltaMOLINA

011H012132 | 80FFNF4

PEAK AltaMOLINA-ET  
AltaNIXER x MAIN EVENT x NUMERO UNO  
H0840M0031384-98982 | DOB 28/12/2016  
Genetic Code: A12

[View USA Proof](#)

**BPI 346 65%**

**HWI 300 58%**

**TWI 317 64%**

**TYPE PROOF** 0 dtrs / 0 herds Rel. 57% (ABV August 2020)

Overall Type	101	Foot Angle	98
Mammary System	104	Heel Depth	102
Feet & Legs	102	Rear Set	100
Rump	102	Rear Leg Rear View	103
Dairy Strength	92	Udder Depth	107
Stature	105	Fore Attachment	102
Udder Texture	102	Rear Attachment Height	110
Bone Quality	105	Rear Attachment Width	100
Angularity	96	Centre Ligament	104
Muzzle Width	99	Teat Placement (front)	96
Body Depth	88	Teat Placement (rear)	101
Chest Width	94	Teat Length	102
Pin Width	98	Loin Strength	96
Pin Set	104		

**FEED EFFICIENCY**

Liveweight	99	61 %R	Feed Saved	9	31 %R
------------	----	-------	------------	---	-------

**ASI 150**

**PRODUCTION** 0 dtrs / 0 herds Rel. 76% (ABV August 2020)

Milk	629	L		
Fat	23	kg	- .06	%
Protein	25	kg	+ .15	%

**HEALTH**

Cell Count	164	68	%R
Survival	111	49	%R
Res Survival	100	55	%R
Dtr. Fertility	113	50	%R
Calving Ease	103	65	%R
Gestation Length	-4	85	%R
Mastitis Resistance	106	62	%R

**WORKABILITIES** 0 dtrs / 0 herds Rel. 59%

Milking Speed	101
Temperament	102
Likability	105

# AltaPIXAR

011H015052 | 80FFRBR

PEAK AltaPIXAR-ET  
 GUARANTEE x JEDI x BOMBERO  
 H0840M003149336765 | DOB 14/05/2018  
 Genetic Code: A22

[View USA Proof](#)



**BPI 345 63%**  
**HWI 263 56%**  
**TWI 321 61%**

**TYPE PROOF** 0 dtrs / 0 herds Rel. 54% (ABV August 2020)

Overall Type	102	Foot Angle	100
Mammary System	101	Heel Depth	104
Feet & Legs	103	Rear Set	99
Rump	100	Rear Leg Rear View	105
Dairy Strength	100	Udder Depth	104
Stature	106	Fore Attachment	101
Udder Texture	102	Rear Attachment Height	104
Bone Quality	98	Rear Attachment Width	98
Angularity	98	Centre Ligament	105
Muzzle Width	104	Teat Placement (front)	96
Body Depth	98	Teat Placement (rear)	99
Chest Width	98	Teat Length	102
Pin Width	103	Loin Strength	100
Pin Set	97		

**FEED EFFICIENCY**

Liveweight	103	58 %R	Feed Saved	-78	30 %R
------------	-----	-------	------------	-----	-------

**ASI 207**

**PRODUCTION** 0 dtrs / 0 herds Rel. 73% (ABV August 2020)

Milk	587	L		
Fat	31	kg		+ .09 %
Protein	30	kg		+ .27 %

**HEALTH**

Cell Count	168	65 %R
Survival	110	45 %R
Res Survival	104	51 %R
Dtr. Fertility	108	45 %R
Calving Ease	102	57 %R
Gestation Length	-5	63 %R
Mastitis Resistance	106	56 %R

**WORKABILITIES** 0 dtrs / 0 herds Rel. 58%

Milking Speed	101
Temperament	103
Likability	106



**BPI 344 66%**  
**HWI 291 60%**  
**TWI 320 65%**

# AltaTIGRE

011H012281 | 80FFPC9

PEAK AltaTIGRE-ET  
 CHARLEY x DELTA x RANSOM  
 H0840M003145229971 | DOB 28/06/2017  
 Genetic Code: A22

[View USA Proof](#)



**TYPE PROOF** 0 dtrs / 0 herds Rel. 60% (ABV August 2020)

Overall Type	102	Foot Angle	97
Mammary System	103	Heel Depth	98
Feet & Legs	101	Rear Set	98
Rump	99	Rear Leg Rear View	98
Dairy Strength	97	Udder Depth	105
Stature	102	Fore Attachment	103
Udder Texture	96	Rear Attachment Height	106
Bone Quality	101	Rear Attachment Width	99
Angularity	94	Centre Ligament	100
Muzzle Width	103	Teat Placement (front)	101
Body Depth	95	Teat Placement (rear)	98
Chest Width	101	Teat Length	90
Pin Width	95	Loin Strength	99
Pin Set	97		

**FEED EFFICIENCY**

Liveweight	100	63 %R	Feed Saved	-6	32 %R
------------	-----	-------	------------	----	-------

**ASI 158**

**PRODUCTION** 0 dtrs / 0 herds Rel. 77% (ABV August 2020)

Milk	548	L		
Fat	22	kg		- .02 %
Protein	25	kg		+ .19 %

**HEALTH**

Cell Count	175	69 %R
Survival	111	52 %R
Res Survival	102	57 %R
Dtr. Fertility	112	52 %R
Calving Ease	105	74 %R
Gestation Length	-13	69 %R
Mastitis Resistance	107	65 %R

**WORKABILITIES** 0 dtrs / 0 herds Rel. 64%

Milking Speed	100
Temperament	103
Likability	104





# AltaLAWSON

011H012157 | 80FFPAN

PEAK AltaLAWSON-ET  
AltaROBSON x DELTA x SUPERSIRE  
H0840M00314-2181099 | DOB 14/04/2017  
Genetic Code: A22

[View USA Proof](#)



**BPI 340 65%**

**HWI 258 58%**

**TWI 328 63%**

**TYPE PROOF** 0 dtrs / 0 herds Rel. 57% (ABV August 2020)

Overall Type	103	Foot Angle	100
Mammary System	102	Heel Depth	103
Feet & Legs	101	Rear Set	100
Rump	101	Rear Leg Rear View	101
Dairy Strength	97	Udder Depth	107
Stature	102	Fore Attachment	102
Udder Texture	101	Rear Attachment Height	105
Bone Quality	107	Rear Attachment Width	98
Angularity	98	Centre Ligament	102
Muzzle Width	97	Teat Placement (front)	100
Body Depth	94	Teat Placement (rear)	101
Chest Width	93	Teat Length	95
Pin Width	99	Loin Strength	99
Pin Set	99		

**FEED EFFICIENCY**

Liveweight	98	60 %R	Feed Saved	-32	31 %R
------------	----	-------	------------	-----	-------

**ASI 222**

**PRODUCTION** 0 dtrs / 0 herds Rel. 75% (ABV August 2020)

Milk	99	L		
Fat	44	kg	+58	%
Protein	22	kg	+37	%

**HEALTH**

Cell Count	158	67	%R
Survival	111	48	%R
Res Survival	106	53	%R
Dtr. Fertility	104	48	%R
Calving Ease	101	75	%R
Gestation Length	-6	71	%R
Mastitis Resistance	106	62	%R

**WORKABILITIES** 0 dtrs / 0 herds Rel. 59%

Milking Speed	102
Temperament	102
Likability	105



# AltaMANIC

011H015085 | 80FFRCB

PEAK AltaMANIC -ET  
POSITIVE x AltaROBSON x SILVER  
H0840M003200824908 | DOB 05/10/2018  
Genetic Code: A22

[View USA Proof](#)



**BPI 340 58%**

**HWI 265 51%**

**TWI 369 57%**

**TYPE PROOF** 0 dtrs / 0 herds Rel. 48% (ABV August 2020)

Overall Type	108	Foot Angle	102
Mammary System	110	Heel Depth	100
Feet & Legs	103	Rear Set	97
Rump	101	Rear Leg Rear View	107
Dairy Strength	99	Udder Depth	109
Stature	107	Fore Attachment	108
Udder Texture	99	Rear Attachment Height	111
Bone Quality	104	Rear Attachment Width	104
Angularity	99	Centre Ligament	104
Muzzle Width	98	Teat Placement (front)	105
Body Depth	96	Teat Placement (rear)	102
Chest Width	98	Teat Length	95
Pin Width	99	Loin Strength	100
Pin Set	103		

**FEED EFFICIENCY**

Liveweight	103	51 %R	Feed Saved	-153	27 %R
------------	-----	-------	------------	------	-------

**ASI 178**

**PRODUCTION** 0 dtrs / 0 herds Rel. 69% (ABV August 2020)

Milk	752	L		
Fat	40	kg	+12	%
Protein	26	kg	+11	%

**HEALTH**

Cell Count	162	59	%R
Survival	113	40	%R
Res Survival	102	46	%R
Dtr. Fertility	106	39	%R
Calving Ease	103	56	%R
Gestation Length	-3	61	%R
Mastitis Resistance	106	53	%R

**WORKABILITIES** 0 dtrs / 0 herds Rel. 52%

Milking Speed	103
Temperament	103
Likability	106



# AltaRISEN

011H012404 | 80FFPJ

G-DERUYTER AltaRISEN-ET  
AltaROBSON x RUBICON x SUSPECT  
H0840M003145240286 | DOB 29/11/2017  
Genetic Code: A22

[View USA Proof](#)



**BPI 339 61%**

**HWI 283 54%**

**TWI 367 60%**

TYPE PROOF 0 dtrs / 0 herds Rel. 51% (ABV August 2020)

Overall Type	108	Foot Angle	101
Mammary System	107	Heel Depth	102
Feet & Legs	100	Rear Set	99
Rump	100	Rear Leg Rear View	102
Dairy Strength	96	Udder Depth	106
Stature	102	Fore Attachment	107
Udder Texture	98	Rear Attachment Height	106
Bone Quality	99	Rear Attachment Width	104
Angularity	95	Centre Ligament	99
Muzzle Width	101	Teat Placement (front)	104
Body Depth	94	Teat Placement (rear)	101
Chest Width	98	Teat Length	97
Pin Width	96	Loin Strength	103
Pin Set	97		

## FEED EFFICIENCY

Liveweight	99	55 %R	Feed Saved	-30	29 %R
------------	----	-------	------------	-----	-------

ASI 164

PRODUCTION 0 dtrs / 0 herds Rel. 72% (ABV August 2020)

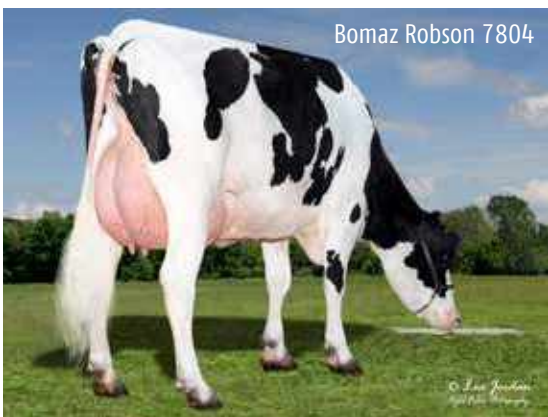
Milk	433	L		
Fat	44	kg	+ .38	%
Protein	18	kg	+ .13	%

## HEALTH

Cell Count	174	63	%R
Survival	111	42	%R
Res Survival	102	48	%R
Dtr. Fertility	106	43	%R
Calving Ease	101	61	%R
Gestation Length	-6	63	%R
Mastitis Resistance	109	58	%R

WORKABILITIES 0 dtrs / 0 herds Rel. 55%

Milking Speed	103
Temperament	102
Likability	106



Bomaz Robson 7804

# AltaROBSON

011H011778 | 80FFMEP

BOMAZ AltaROBSON  
RUBICON x BOB x SHAMROCK  
H0USAM000073953484 | DOB 24/08/2015  
Genetic Code: A22CVFBLFDPF

[View USA Proof](#)



**BPI 337 71%**

**HWI 256 65%**

**TWI 338 70%**

TYPE PROOF 0 dtrs / 0 herds Rel. 75% (ABV August 2020)

Overall Type	104	Foot Angle	103
Mammary System	102	Heel Depth	101
Feet & Legs	102	Rear Set	99
Rump	99	Rear Leg Rear View	104
Dairy Strength	98	Udder Depth	105
Stature	103	Fore Attachment	107
Udder Texture	96	Rear Attachment Height	101
Bone Quality	100	Rear Attachment Width	101
Angularity	94	Centre Ligament	94
Muzzle Width	98	Teat Placement (front)	100
Body Depth	97	Teat Placement (rear)	96
Chest Width	101	Teat Length	101
Pin Width	99	Loin Strength	101
Pin Set	96		

## FEED EFFICIENCY

Liveweight	101	79 %R	Feed Saved	-99	39 %R
------------	-----	-------	------------	-----	-------

ASI 190

PRODUCTION 24 dtrs / 4 herds Rel. 75% (ABV August 2020)

Milk	-65	L		
Fat	32	kg	+ .50	%
Protein	18	kg	+ .38	%

## HEALTH

Cell Count	169	81	%R
Survival	110	62	%R
Res Survival	102	67	%R
Dtr. Fertility	109	71	%R
Calving Ease	102	92	%R
Gestation Length	-5	94	%R
Mastitis Resistance	109	65	%R

WORKABILITIES 0 dtrs / 0 herds Rel. 74%

Milking Speed	101
Temperament	102
Likability	106



# AltaSTOKED

011H012131 | 80FFND5

PEAK AltaSTOKED-ET  
 SUPERHERO x YODER x MAN-0-MAN  
 H0840M003138498974 | DOB 14/12/2016  
 Genetic Code: A22

[View USA Proof](#)

A2

**BPI 336 67%**

**HWI 270 60%**

**TWI 295 66%**

**TYPE PROOF** 0 dtrs / 0 herds Rel. 60% (ABV August 2020)

Overall Type	98	Foot Angle	97
Mammary System	101	Heel Depth	98
Feet & Legs	99	Rear Set	96
Rump	95	Rear Leg Rear View	102
Dairy Strength	94	Udder Depth	105
Stature	102	Fore Attachment	101
Udder Texture	100	Rear Attachment Height	105
Bone Quality	104	Rear Attachment Width	95
Angularity	95	Centre Ligament	102
Muzzle Width	100	Teat Placement (front)	99
Body Depth	92	Teat Placement (rear)	100
Chest Width	96	Teat Length	96
Pin Width	96	Loin Strength	95
Pin Set	95		

**FEED EFFICIENCY**

Liveweight	98	63 %R	Feed Saved	9	32 %R
------------	----	-------	------------	---	-------

**ASI 197**

**PRODUCTION** 0 dtrs / 0 herds Rel. 78% (ABV August 2020)

Milk	559	L		
Fat	36	kg		+ .17 %
Protein	27	kg		+ .23 %

**HEALTH**

Cell Count	167	69	%R
Survival	109	52	%R
Res Survival	102	57	%R
Dtr. Fertility	107	51	%R
Calving Ease	102	76	%R
Gestation Length	-4	67	%R
Mastitis Resistance	106	67	%R

**WORKABILITIES** 0 dtrs / 0 herds Rel. 63%

Milking Speed	102
Temperament	103
Likability	105



# AltaSTAFFORD

011H012258 | 80FFPB8

PEAK AltaSTAFFORD-ET  
 CHARLEY x AltaSPRING x SUPERSIRE  
 H0840M003145229768 | DOB 30/07/2017  
 Genetic Code: A22

[View USA Proof](#)

FUTURE STAR CONCEPT PLUS DxD HEALTH PLUS 511 A2

**BPI 335 67%**

**HWI 253 60%**

**TWI 318 66%**

**TYPE PROOF** 0 dtrs / 0 herds Rel. 61% (ABV August 2020)

Overall Type	102	Foot Angle	98
Mammary System	104	Heel Depth	99
Feet & Legs	101	Rear Set	99
Rump	99	Rear Leg Rear View	104
Dairy Strength	101	Udder Depth	104
Stature	101	Fore Attachment	103
Udder Texture	98	Rear Attachment Height	105
Bone Quality	104	Rear Attachment Width	100
Angularity	98	Centre Ligament	101
Muzzle Width	104	Teat Placement (front)	102
Body Depth	102	Teat Placement (rear)	100
Chest Width	104	Teat Length	93
Pin Width	98	Loin Strength	103
Pin Set	99		

**FEED EFFICIENCY**

Liveweight	102	64 %R	Feed Saved	-102	33 %R
------------	-----	-------	------------	------	-------

**ASI 209**

**PRODUCTION** 0 dtrs / 0 herds Rel. 77% (ABV August 2020)

Milk	888	L		
Fat	39	kg		+ .02 %
Protein	33	kg		+ .17 %

**HEALTH**

Cell Count	161	70	%R
Survival	112	53	%R
Res Survival	108	58	%R
Dtr. Fertility	107	53	%R
Calving Ease	104	67	%R
Gestation Length	-3	84	%R
Mastitis Resistance	104	66	%R

**WORKABILITIES** 0 dtrs / 0 herds Rel. 64%

Milking Speed	100
Temperament	105
Likability	105



# AltaKLAEBO

011H012323 | 70FFP90

PEAK AltaKLAEBO-ET  
 GUARANTEE x JEDI x PURE  
 HOCANM000012948857 | DOB 25/10/2017  
 Genetic Code: A22

[View USA Proof](#)



**BPI 334 65%**

**HWI 273 58%**

**TWI 293 63%**

**TYPE PROOF** 0 dtrs / 0 herds Rel. 57% (ABV August 2020)

Overall Type	98	Foot Angle	96
Mammary System	100	Heel Depth	101
Feet & Legs	95	Rear Set	101
Rump	99	Rear Leg Rear View	96
Dairy Strength	95	Udder Depth	109
Stature	101	Fore Attachment	102
Udder Texture	96	Rear Attachment Height	105
Bone Quality	103	Rear Attachment Width	95
Angularity	94	Centre Ligament	101
Muzzle Width	96	Teat Placement (front)	97
Body Depth	92	Teat Placement (rear)	98
Chest Width	96	Teat Length	96
Pin Width	99	Loin Strength	98
Pin Set	95		

**FEED EFFICIENCY**

Liveweight	98	60 %R	Feed Saved	-52	31 %R
------------	----	-------	------------	-----	-------

**ASI 154**

**PRODUCTION** 0 dtrs / 0 herds Rel. 75% (ABV August 2020)

Milk	345	L		
Fat	19	kg		+ .06 %
Protein	22	kg		+ .25 %

**HEALTH**

Cell Count	182	67 %R
Survival	111	48 %R
Res Survival	101	54 %R
Dtr. Fertility	111	47 %R
Calving Ease	103	69 %R
Gestation Length	-5	62 %R
Mastitis Resistance	109	59 %R

**WORKABILITIES** 0 dtrs / 0 herds Rel. 60%

Milking Speed	103
Temperament	102
Likability	105



# AltaVANISH

011H015201 | 80FFRCA

PEAK AltaVANISH-ET  
 POSITIVE x JEDI x MONTEREY  
 H0840M003200824116 | DOB 22/10/2018  
 Genetic Code: A12

[View USA Proof](#)



**BPI 333 61%**

**HWI 267 54%**

**TWI 338 60%**

**TYPE PROOF** 0 dtrs / 0 herds Rel. 51% (ABV August 2020)

Overall Type	105	Foot Angle	98
Mammary System	108	Heel Depth	102
Feet & Legs	101	Rear Set	102
Rump	99	Rear Leg Rear View	103
Dairy Strength	95	Udder Depth	110
Stature	106	Fore Attachment	103
Udder Texture	104	Rear Attachment Height	106
Bone Quality	107	Rear Attachment Width	101
Angularity	98	Centre Ligament	108
Muzzle Width	91	Teat Placement (front)	108
Body Depth	94	Teat Placement (rear)	107
Chest Width	94	Teat Length	95
Pin Width	99	Loin Strength	98
Pin Set	94		

**FEED EFFICIENCY**

Liveweight	101	55 %R	Feed Saved	-54	29 %R
------------	-----	-------	------------	-----	-------

**ASI 189**

**PRODUCTION** 0 dtrs / 0 herds Rel. 72% (ABV August 2020)

Milk	725	L		
Fat	34	kg		+ .04 %
Protein	29	kg		+ .18 %

**HEALTH**

Cell Count	160	62 %R
Survival	113	44 %R
Res Survival	106	49 %R
Dtr. Fertility	103	42 %R
Calving Ease	104	57 %R
Gestation Length	-3	62 %R
Mastitis Resistance	103	56 %R

**WORKABILITIES** 0 dtrs / 0 herds Rel. 55%

Milking Speed	105
Temperament	104
Likability	106



# AltaGILMORE

011H012168 | 80FFPAC

PEAK AltaGILMORE-ET  
AltaTOPSHOT x YODER x LEXOR  
H0840M003138498826 | DOB 28/02/2017  
Genetic Code: A22

[View USA Proof](#)



**BPI 327 65%**

**HWI 242 58%**

**TWI 276 64%**

**TYPE PROOF** 0 dtrs / 0 herds Rel. 57% (ABV August 2020)

Overall Type	94	Foot Angle	96
Mammary System	100	Heel Depth	97
Feet & Legs	96	Rear Set	99
Rump	98	Rear Leg Rear View	101
Dairy Strength	92	Udder Depth	102
Stature	100	Fore Attachment	103
Udder Texture	98	Rear Attachment Height	99
Bone Quality	100	Rear Attachment Width	98
Angularity	94	Centre Ligament	101
Muzzle Width	96	Teat Placement (front)	98
Body Depth	92	Teat Placement (rear)	99
Chest Width	97	Teat Length	99
Pin Width	99	Loin Strength	95
Pin Set	99		

**FEED EFFICIENCY**

Liveweight	97	61 %R	Feed Saved	-58	31 %R
------------	----	-------	------------	-----	-------

**ASI 221**

**PRODUCTION** 0 dtrs / 0 herds Rel. 75% (ABV August 2020)

Milk	420	L		
Fat	39	kg	+ .30	%
Protein	28	kg	+ .31	%

**HEALTH**

Cell Count	157	67	%R
Survival	107	49	%R
Res Survival	102	55	%R
Dtr. Fertility	107	50	%R
Calving Ease	104	70	%R
Gestation Length	-8	89	%R
Mastitis Resistance	104	62	%R

**WORKABILITIES** 0 dtrs / 0 herds Rel. 61%

Milking Speed	102
Temperament	103
Likability	104



# AltaTRUSTEE

011H012353 | 70FFP72

PEAK AltaTRUSTEE-ET  
GUARANTEE x JEDI x HALOGEN  
H0CANM000012948981 | DOB 27/11/2017  
Genetic Code: A12

[View USA Proof](#)



**BPI 326 64%**

**HWI 290 57%**

**TWI 269 63%**

**TYPE PROOF** 0 dtrs / 0 herds Rel. 56% (ABV August 2020)

Overall Type	97	Foot Angle	89
Mammary System	101	Heel Depth	100
Feet & Legs	97	Rear Set	105
Rump	97	Rear Leg Rear View	104
Dairy Strength	94	Udder Depth	105
Stature	101	Fore Attachment	101
Udder Texture	101	Rear Attachment Height	104
Bone Quality	103	Rear Attachment Width	100
Angularity	95	Centre Ligament	103
Muzzle Width	101	Teat Placement (front)	95
Body Depth	91	Teat Placement (rear)	97
Chest Width	94	Teat Length	101
Pin Width	98	Loin Strength	94
Pin Set	92		

**FEED EFFICIENCY**

Liveweight	96	59 %R	Feed Saved	79	31 %R
------------	----	-------	------------	----	-------

**ASI 144**

**PRODUCTION** 0 dtrs / 0 herds Rel. 74% (ABV August 2020)

Milk	756	L		
Fat	16	kg	- .23	%
Protein	28	kg	+ .14	%

**HEALTH**

Cell Count	164	66	%R
Survival	109	47	%R
Res Survival	103	52	%R
Dtr. Fertility	116	46	%R
Calving Ease	102	58	%R
Gestation Length	-4	63	%R
Mastitis Resistance	108	58	%R

**WORKABILITIES** 0 dtrs / 0 herds Rel. 59%

Milking Speed	99
Temperament	103
Likability	104



# AltaMONSON

011H012196 | 80FFPAV

BOMAZ AltaMONSON-ET  
AltaROBSON x MONTEREY x AltaOAK  
H0840M003143383930 | DOB 05/05/2017  
Genetic Code: A12

[View USA Proof](#)

**BPI 318 65%**

**HWI 249 58%**

**TWI 312 63%**

**TYPE PROOF** 0 dtrs / 0 herds Rel. 57% (ABV August 2020)

Overall Type	101	Foot Angle	102
Mammary System	102	Heel Depth	104
Feet & Legs	103	Rear Set	98
Rump	93	Rear Leg Rear View	103
Dairy Strength	96	Udder Depth	109
Stature	107	Fore Attachment	106
Udder Texture	98	Rear Attachment Height	104
Bone Quality	99	Rear Attachment Width	95
Angularity	93	Centre Ligament	103
Muzzle Width	99	Teat Placement (front)	100
Body Depth	94	Teat Placement (rear)	102
Chest Width	100	Teat Length	102
Pin Width	100	Loin Strength	96
Pin Set	88		

**FEED EFFICIENCY**

Liveweight	103	60 %R	Feed Saved	-15	31 %R
------------	-----	-------	------------	-----	-------

**ASI 198**

**PRODUCTION** 0 dtrs / 0 herds Rel. 75% (ABV August 2020)

Milk	414	L		
Fat	30	kg		+ .17 %
Protein	27	kg		+ .30 %

**HEALTH**

Cell Count	163	67	%R
Survival	109	48	%R
Res Survival	104	54	%R
Dtr. Fertility	104	49	%R
Calving Ease	100	75	%R
Gestation Length	-4	74	%R
Mastitis Resistance	105	62	%R

**WORKABILITIES** 0 dtrs / 0 herds Rel. 60%

Milking Speed	102
Temperament	103
Likability	105



# AltaMIGHTY-P

011H011827 | 80FFMGL

PEAK AltaMIGHTY P-ET  
POWERBALL-P x SUPERSIRE x BOOKEM  
H0840M003131131453 | DOB 23/08/2015  
Genetic Code: A12POC

[View USA Proof](#)

**BPI 317 70%**

**HWI 249 63%**

**TWI 306 69%**

**TYPE PROOF** 0 dtrs / 0 herds Rel. 65% (ABV August 2020)

Overall Type	101	Foot Angle	96
Mammary System	103	Heel Depth	104
Feet & Legs	94	Rear Set	109
Rump	104	Rear Leg Rear View	98
Dairy Strength	95	Udder Depth	106
Stature	105	Fore Attachment	102
Udder Texture	103	Rear Attachment Height	106
Bone Quality	110	Rear Attachment Width	97
Angularity	98	Centre Ligament	100
Muzzle Width	94	Teat Placement (front)	104
Body Depth	95	Teat Placement (rear)	104
Chest Width	91	Teat Length	97
Pin Width	101	Loin Strength	106
Pin Set	105		

**FEED EFFICIENCY**

Liveweight	100	66 %R	Feed Saved	-2	34 %R
------------	-----	-------	------------	----	-------

**ASI 209**

**PRODUCTION** 0 dtrs / 0 herds Rel. 79% (ABV August 2020)

Milk	863	L		
Fat	27	kg		- .14 %
Protein	36	kg		+ .24 %

**HEALTH**

Cell Count	148	75	%R
Survival	112	57	%R
Res Survival	105	63	%R
Dtr. Fertility	102	58	%R
Calving Ease	103	78	%R
Gestation Length	-6	72	%R
Mastitis Resistance	104	70	%R

**WORKABILITIES** 0 dtrs / 0 herds Rel. 68%

Milking Speed	103
Temperament	103
Likability	106



# AltaINCEPTION

011H015179 | 80FFRC8

PEAK AltaINCEPTION-ET  
AltaMONTTOYA x AltaTOPSHOT x SILVER  
H0840M003200824369 | DOB 21/08/2018  
Genetic Code: A12

[View USA Proof](#)



**BPI 316 61%**

**HWI 264 55%**

**TWI 297 60%**

**TYPE PROOF** 0 dtrs / 0 herds Rel. 51% (ABV August 2020)

Overall Type	101	Foot Angle	95
Mammary System	105	Heel Depth	99
Feet & Legs	98	Rear Set	102
Rump	103	Rear Leg Rear View	100
Dairy Strength	96	Udder Depth	107
Stature	105	Fore Attachment	104
Udder Texture	99	Rear Attachment Height	105
Bone Quality	101	Rear Attachment Width	98
Angularity	95	Centre Ligament	101
Muzzle Width	101	Teat Placement (front)	107
Body Depth	93	Teat Placement (rear)	103
Chest Width	98	Teat Length	99
Pin Width	103	Loin Strength	98
Pin Set	96		

**FEED EFFICIENCY**

Liveweight	101	55 %R	Feed Saved	-25	29 %R
------------	-----	-------	------------	-----	-------

**ASI 155**

**PRODUCTION** 0 dtrs / 0 herds Rel. 72% (ABV August 2020)

Milk	666	L		
Fat	37	kg	+ .13	%
Protein	22	kg	+ .08	%

**HEALTH**

Cell Count	180	63	%R
Survival	111	44	%R
Res Survival	105	49	%R
Dtr. Fertility	109	42	%R
Calving Ease	102	60	%R
Gestation Length	-3	62	%R
Mastitis Resistance	106	56	%R

**WORKABILITIES** 0 dtrs / 0 herds Rel. 56%

Milking Speed	100
Temperament	102
Likability	104



**BPI 315 66%**

**HWI 281 60%**

**TWI 299 65%**

**TYPE PROOF** 0 dtrs / 0 herds Rel. 60% (ABV August 2020)

Overall Type	103	Foot Angle	101
Mammary System	107	Heel Depth	104
Feet & Legs	101	Rear Set	92
Rump	101	Rear Leg Rear View	100
Dairy Strength	97	Udder Depth	104
Stature	99	Fore Attachment	103
Udder Texture	98	Rear Attachment Height	106
Bone Quality	100	Rear Attachment Width	102
Angularity	92	Centre Ligament	103
Muzzle Width	100	Teat Placement (front)	108
Body Depth	95	Teat Placement (rear)	105
Chest Width	103	Teat Length	92
Pin Width	98	Loin Strength	99
Pin Set	103		

**FEED EFFICIENCY**

Liveweight	99	63 %R	Feed Saved	-27	32 %R
------------	----	-------	------------	-----	-------

# AltaBACK9

011H012259 | 80FFPFH

PEAK AltaBACK9-ET  
FLAGSHIP x SUPERSHOT x FACEBOOK  
H0840M003145229764 | DOB 28/07/2017  
Genetic Code: A11

[View USA Proof](#)



**ASI 107**

**PRODUCTION** 0 dtrs / 0 herds Rel. 76% (ABV August 2020)

Milk	656	L		
Fat	17	kg	- .15	%
Protein	20	kg	+ .05	%

**HEALTH**

Cell Count	168	69	%R
Survival	110	53	%R
Res Survival	99	58	%R
Dtr. Fertility	114	53	%R
Calving Ease	102	72	%R
Gestation Length	-5	63	%R
Mastitis Resistance	106	65	%R

**WORKABILITIES** 0 dtrs / 0 herds Rel. 64%

Milking Speed	100
Temperament	103
Likability	105



# AltaTORRENT

011H012346 | 80FFPGH

DAR-BURN AltaTORRENT  
AltaTOPSHOT x DELTA x SUPERSIRE  
HOUSAM000074396080 | DOB 15/10/2017  
Genetic Code: A22

[View USA Proof](#)



**BPI 315 66%**

**HWI 267 59%**

**TWI 293 65%**

**TYPE PROOF** 0 dtrs / 0 herds Rel. 59% (ABV August 2020)

Overall Type	103	Foot Angle	97
Mammary System	102	Heel Depth	101
Feet & Legs	100	Rear Set	103
Rump	102	Rear Leg Rear View	101
Dairy Strength	98	Udder Depth	101
Stature	99	Fore Attachment	101
Udder Texture	98	Rear Attachment Height	103
Bone Quality	98	Rear Attachment Width	102
Angularity	95	Centre Ligament	103
Muzzle Width	103	Teat Placement (front)	97
Body Depth	96	Teat Placement (rear)	100
Chest Width	101	Teat Length	100
Pin Width	99	Loin Strength	102
Pin Set	99		

**FEED EFFICIENCY**

Liveweight	99	62 %R	Feed Saved	-10	32 %R
------------	----	-------	------------	-----	-------

**ASI 139**

**PRODUCTION** 0 dtrs / 0 herds Rel. 76% (ABV August 2020)

Milk	361	L		
Fat	35	kg	+ .28	%
Protein	16	kg	+ .12	%

**HEALTH**

Cell Count	166	69	%R
Survival	109	51	%R
Res Survival	102	57	%R
Dtr. Fertility	111	52	%R
Calving Ease	104	71	%R
Gestation Length	-8	63	%R
Mastitis Resistance	108	63	%R

**WORKABILITIES** 0 dtrs / 0 herds Rel. 62%

Milking Speed	101
Temperament	103
Likability	105



# AltaSHAZAM

011H015060 | 80FFRC9

PEAK AltaSHAZAM-ET  
MILKTIME x JEDI x YODER  
H0840M003200824088 | DOB 07/10/2018  
Genetic Code: A22

[View USA Proof](#)



**BPI 314 62%**

**HWI 243 55%**

**TWI 293 61%**

**TYPE PROOF** 0 dtrs / 0 herds Rel. 53% (ABV August 2020)

Overall Type	100	Foot Angle	97
Mammary System	104	Heel Depth	98
Feet & Legs	97	Rear Set	99
Rump	100	Rear Leg Rear View	104
Dairy Strength	98	Udder Depth	105
Stature	102	Fore Attachment	101
Udder Texture	96	Rear Attachment Height	107
Bone Quality	101	Rear Attachment Width	98
Angularity	96	Centre Ligament	103
Muzzle Width	104	Teat Placement (front)	105
Body Depth	97	Teat Placement (rear)	102
Chest Width	100	Teat Length	97
Pin Width	101	Loin Strength	99
Pin Set	99		

**FEED EFFICIENCY**

Liveweight	100	56 %R	Feed Saved	-55	30 %R
------------	-----	-------	------------	-----	-------

**ASI 202**

**PRODUCTION** 0 dtrs / 0 herds Rel. 73% (ABV August 2020)

Milk	1079	L		
Fat	37	kg	- .13	%
Protein	35	kg	+ .12	%

**HEALTH**

Cell Count	168	64	%R
Survival	110	45	%R
Res Survival	105	51	%R
Dtr. Fertility	102	43	%R
Calving Ease	103	59	%R
Gestation Length	-3	62	%R
Mastitis Resistance	102	58	%R

**WORKABILITIES** 0 dtrs / 0 herds Rel. 57%

Milking Speed	102
Temperament	104
Likability	106





# AltaLEAP

011H012336 | 80FFPD6

PEAK AltaLEAP-ET  
 QUANTUM x AltaSPRING x SUPERSIRE  
 H0840M003147224052 | DOB 01/11/2017  
 Genetic Code: A22

[View USA Proof](#)



**BPI 307 66%**  
**HWI 246 59%**  
**TWI 281 65%**

**TYPE PROOF** 0 dtrs / 0 herds Rel. 59% (ABV August 2020)

Overall Type	98	Foot Angle	105
Mammary System	101	Heel Depth	101
Feet & Legs	102	Rear Set	96
Rump	95	Rear Leg Rear View	101
Dairy Strength	96	Udder Depth	107
Stature	102	Fore Attachment	105
Udder Texture	95	Rear Attachment Height	108
Bone Quality	99	Rear Attachment Width	94
Angularity	92	Centre Ligament	100
Muzzle Width	103	Teat Placement (front)	98
Body Depth	94	Teat Placement (rear)	100
Chest Width	103	Teat Length	95
Pin Width	100	Loin Strength	96
Pin Set	97		

**FEED EFFICIENCY**

Liveweight	101	63 %R	Feed Saved	-18	32 %R
------------	-----	-------	------------	-----	-------

**ASI 169**

**PRODUCTION** 0 dtrs / 0 herds Rel. 76% (ABV August 2020)

Milk	302	L		
Fat	29	kg	+ .24	%
Protein	21	kg	+ .25	%

**HEALTH**

Cell Count	174	68	%R
Survival	113	51	%R
Res Survival	110	56	%R
Dtr. Fertility	107	49	%R
Calving Ease	104	73	%R
Gestation Length	-3	64	%R
Mastitis Resistance	110	62	%R

**WORKABILITIES** 0 dtrs / 0 herds Rel. 61%

Milking Speed	100
Temperament	104
Likability	105



# AltaMAYAN

011H012288 | 80FFPKB

WINSTAR AltaMAYAN-ET  
 CHARLEY x SILVER x MOONRAY  
 H0840M003140985563 | DOB 23/07/2017  
 Genetic Code: A22

[View USA Proof](#)



**BPI 302 67%**  
**HWI 247 60%**  
**TWI 304 66%**

**TYPE PROOF** 0 dtrs / 0 herds Rel. 62% (ABV August 2020)

Overall Type	103	Foot Angle	98
Mammary System	105	Heel Depth	100
Feet & Legs	102	Rear Set	97
Rump	101	Rear Leg Rear View	104
Dairy Strength	99	Udder Depth	105
Stature	102	Fore Attachment	104
Udder Texture	100	Rear Attachment Height	106
Bone Quality	100	Rear Attachment Width	99
Angularity	96	Centre Ligament	102
Muzzle Width	102	Teat Placement (front)	103
Body Depth	97	Teat Placement (rear)	99
Chest Width	102	Teat Length	96
Pin Width	96	Loin Strength	101
Pin Set	100		

**FEED EFFICIENCY**

Liveweight	101	64 %R	Feed Saved	-48	33 %R
------------	-----	-------	------------	-----	-------

**ASI 153**

**PRODUCTION** 0 dtrs / 0 herds Rel. 78% (ABV August 2020)

Milk	676	L		
Fat	26	kg	- .04	%
Protein	25	kg	+ .13	%

**HEALTH**

Cell Count	172	70	%R
Survival	111	54	%R
Res Survival	103	59	%R
Dtr. Fertility	105	54	%R
Calving Ease	104	71	%R
Gestation Length	-8	63	%R
Mastitis Resistance	105	66	%R

**WORKABILITIES** 0 dtrs / 0 herds Rel. 64%

Milking Speed	101
Temperament	104
Likability	106