



- ▲ High ABV early AltaNIXER son BPI(g) 361
- ▲ 'No Holes' type profile
- ▲ High Components
- ▲ High Survival, 112 & Dtr Fert 117

BPI 361 66%
TWI 332 65%
HWI 317 59%

AltaMOLINA 011H012132

PEAK ALTAMOLINA-ET
 AltaNIXER X MAIN EVENT
 H0840M003138498982 | DOB 12/28/2016
 Genetic Code: -

USA Proof

TYPE PROOF (ABV APRIL 2019)

Overall Type	102	Rear Set	99
Mammary System	106	Rear Leg Rear View	101
Stature	107	Udder Depth	108
Udder Texture	102	Fore Attachment	103
Bone Quality	104	Rear Attachment Height	109
Angularity	97	Rear Attachment Width	102
Muzzle Width	99	Centre Ligament	103
Body Depth	89	Teat Placement (front)	99
Chest Width	95	Teat Placement (rear)	100
Pin Width	98	Teat Length	102
Pin Set	107	Loin Strength	97
Foot Angle	98		

Dtr: 0 Herds: 0 60%R

ASI 135

PRODUCTION (ABV APRIL 2019)

Milk	692	L		
Fat	21	kg	-0.12	%
Protein	24	kg	+0.10	%
Dtr: 0 Herds: 0 77%R				

HEALTH

Cell Count	165	67	%R
Survival	112	53	%R
Liveweight	100	61	%R
Dtr. Fertility	117	51	%R
Calving Ease	103	30	%R

WORKABILITIES

Milking Speed	100
Temperament	102
Likability	105

Dtr: 0 Herds: 0 64%R



Crackholm AltaROBLE Buckle

- ▲ #1 TWI 428
- ▲ #1 HWI 328
- ▲ High BPI 358 with 120 Aus Daughters
- ▲ 112 Type
- ▲ 116 Mam
- ▲ #1 Survival ABV 115

BPI 358 83%
TWI 428 80%
HWI 328 75%

AltaROBLE 011H011380

LONE-OAK-ACRES AltaROBLE-ET
 MOGUL x OBSERVER
 H0USAM000069829747 | DOB 10/12/2012
 Genetic Code: A2

USA Proof

♀ 511

TYPE PROOF (ABV APRIL 2019)

Overall Type	112	Rear Set	95
Mammary System	116	Rear Leg Rear View	105
Stature	104	Udder Depth	112
Udder Texture	103	Fore Attachment	116
Bone Quality	113	Rear Attachment Height	115
Angularity	103	Rear Attachment Width	99
Muzzle Width	94	Centre Ligament	106
Body Depth	94	Teat Placement (front)	112
Chest Width	97	Teat Placement (rear)	104
Pin Width	103	Teat Length	94
Pin Set	100	Loin Strength	101
Foot Angle	101		

Dtr: 0 Herds: 8 76%R

ASI 115

PRODUCTION (ABV APRIL 2019)

Milk	833	L		
Fat	18	kg	-0.26	%
Protein	24	kg	-0.03	%
Dtr: 120 Herds: 23 93%R				

HEALTH

Cell Count	163	89	%R
Survival	115	74	%R
Liveweight	100	79	%R
Dtr. Fertility	111	85	%R
Calving Ease	101	76	%R

WORKABILITIES

Milking Speed	103
Temperament	104
Likability	107

Dtr: 0 Herds: 6 82%R



- ▲ High BPI (g) 355
- ▲ Alta CONCEPT PLUS and A2A2
- ▲ Noticeably lowers Pins 104

BPI 355 66%
TWI 331 66%
HWI 294 60%

AltaTBAY

011H012246

PEAK ALTATBAY-ET
 CHARLEY X SILVER
 H0840M003145229969 | DOB 6/28/2017
 Genetic Code: A2

USA Proof



TYPE PROOF (ABV APRIL 2019)

Overall Type	101	Rear Set	93
Mammary System	104	Rear Leg Rear View	100
Stature	104	Udder Depth	106
Udder Texture	102	Fore Attachment	103
Bone Quality	106	Rear Attachment Height	106
Angularity	96	Rear Attachment Width	96
Muzzle Width	95	Centre Ligament	102
Body Depth	94	Teat Placement (front)	105
Chest Width	97	Teat Placement (rear)	101
Pin Width	92	Teat Length	99
Pin Set	104	Loin Strength	101
Foot Angle	103		

Dtr: 0 Herds: 0 61%R

ASI 177

PRODUCTION (ABV APRIL 2019)

Milk	739	L		
Fat	31	kg	-0.01	%
Protein	28	kg	+0.16	%

Dtr: 0 Herds: 0 77%R

HEALTH

Cell Count	166	68	%R
Survival	112	54	%R
Liveweight	100	62	%R
Dtr. Fertility	110	53	%R
Calving Ease	102	37	%R

WORKABILITIES

Milking Speed	102
Temperament	102
Likability	105

Dtr: 0 Herds: 0 65%R

Ansal Hotrod 460



- ▲ #1 Protein ABV sire +48kgs!
- ▲ Extreme ASI 248
- ▲ Great Type and Mammary

BPI 351 78%
TWI 363 77%
HWI 240 72%

AltaHOTROD

011H011493

GLEN-D-HAVEN AltaHOTROD
 JEROD x AltaIOTA
 H0USAM000055618778 | DOB 9/5/2013
 Genetic Code: A22

USA Proof



TYPE PROOF (ABV APRIL 2019)

Overall Type	108	Rear Set	97
Mammary System	107	Rear Leg Rear View	106
Stature	115	Udder Depth	106
Udder Texture	104	Fore Attachment	104
Bone Quality	107	Rear Attachment Height	100
Angularity	107	Rear Attachment Width	103
Muzzle Width	101	Centre Ligament	111
Body Depth	96	Teat Placement (front)	107
Chest Width	98	Teat Placement (rear)	110
Pin Width	104	Teat Length	94
Pin Set	111	Loin Strength	98
Foot Angle	105		

Dtr: 0 Herds: 2 80%R

ASI 248

PRODUCTION (ABV APRIL 2019)

Milk	1555	L		
Fat	39	kg	-0.39	%
Protein	48	kg	+0.12	%

Dtr: 48 Herds: 13 83%R

HEALTH

Cell Count	134	84	%R
Survival	111	71	%R
Liveweight	109	82	%R
Dtr. Fertility	106	81	%R
Calving Ease	101	70	%R

WORKABILITIES

Milking Speed	101
Temperament	101
Likability	102

Dtr: 0 Herds: 0 84%R



- ▲ High ranking BPI sire 335 BPI (g)
- ▲ High components
- ▲ Equal #2 Survival ABV 114

BPI 335 66%
TWI 336 65%
HWI 271 59%

AltaZONE 011H012130

PEAK ALTAZONE-ET
 SUPERHERO X SILVER X SUPERSIRE
 H0840M003139851853 | DOB 12/12/2016
 Genetic Code: A2

USA Proof

TYPE PROOF (ABV APRIL 2019)

Overall Type	106	Rear Set	99
Mammary System	105	Rear Leg Rear View	103
Stature	105	Udder Depth	106
Udder Texture	101	Fore Attachment	104
Bone Quality	98	Rear Attachment Height	102
Angularity	99	Rear Attachment Width	101
Muzzle Width	97	Centre Ligament	103
Body Depth	99	Teat Placement (front)	105
Chest Width	104	Teat Placement (rear)	99
Pin Width	101	Teat Length	94
Pin Set	1.3	Loin Strength	98
Foot Angle	97		

Dtr: 0 Herds: 0 59%R

ASI 148

PRODUCTION (ABV APRIL 2019)

Milk	552 L		
Fat	33 kg	+0.13	%
Protein	21 kg	+0.11	%
Dtr: 0 Herds: 0 77%R			

HEALTH

Cell Count	170	67	%R
Survival	114	52	%R
Liveweight	104	61	%R
Dtr. Fertility	111	51	%R
Calving Ease	101	35	%R

WORKABILITIES

Milking Speed	101
Temperament	103
Likability	105

Dtr: 0 Herds: 0 64%R



- ▲ High BPI (g) 331 and ASI 190
- ▲ Extreme components and health
- ▲ Sexed semen available

BPI 331 65%
TWI 323 64%
HWI 268 58%

AltaAROLDIS 011H012161

PEAK ALTAAROLDIS-ET
 AltaROBSON X YODER X MCCUTCHEN
 H0840M003142181110 | DOB 4/23/2017
 Genetic Code: A2

USA Proof

511

TYPE PROOF (ABV APRIL 2019)

Overall Type	102	Rear Set	98
Mammary System	104	Rear Leg Rear View	102
Stature	98	Udder Depth	108
Udder Texture	103	Fore Attachment	104
Bone Quality	106	Rear Attachment Height	104
Angularity	97	Rear Attachment Width	98
Muzzle Width	95	Centre Ligament	104
Body Depth	95	Teat Placement (front)	102
Chest Width	94	Teat Placement (rear)	100
Pin Width	92	Teat Length	95
Pin Set	95	Loin Strength	97
Foot Angle	101		

Dtr: 0 Herds: 0 58%R

ASI 190

PRODUCTION (ABV APRIL 2019)

Milk	364 L		
Fat	44 kg	+0.41	%
Protein	21 kg	+0.22	%
Dtr: 0 Herds: 0 77%R			

HEALTH

Cell Count	160	67	%R
Survival	111	51	%R
Liveweight	95	60	%R
Dtr. Fertility	10	49	%R
Calving Ease	102	30	%R

WORKABILITIES

Milking Speed	102
Temperament	104
Likability	106

Dtr: 0 Herds: 0 62%R



- ▲ High BPI (g) 327
- ▲ High CFP + Components
- ▲ Balanced, open frames

BPI 327 66%
TWI 326 65%
HWI 259 59%

AltaSTAFFORD 011H012258

PEAK ALTASTAFFORD-ET
 CHARLEY X AltaSPRING X SUPERSIRE
 H0840M003145229768 | DOB 7/30/2017
 Genetic Code: A2

USA Proof



TYPE PROOF (ABV APRIL 2019)

Overall Type	105	Rear Set	99
Mammary System	105	Rear Leg Rear View	103
Stature	98	Udder Depth	104
Udder Texture	101	Fore Attachment	104
Bone Quality	104	Rear Attachment Height	106
Angularity	99	Rear Attachment Width	101
Muzzle Width	99	Centre Ligament	104
Body Depth	101	Teat Placement (front)	101
Chest Width	101	Teat Placement (rear)	99
Pin Width	95	Teat Length	96
Pin Set	96	Loin Strength	101
Foot Angle	99		

Dtr: 0 Herds: 0 61%R

ASI 189

PRODUCTION (ABV APRIL 2019)

Milk	673	L		
Fat	37	kg	+0.12	%
Protein	27	kg	+0.18	%
Dtr: 0 Herds: 0 77%R				

HEALTH

Cell Count	161	67	%R
Survival	113	54	%R
Liveweight	100	61	%R
Dtr. Fertility	107	53	%R
Calving Ease	102	37	%R

WORKABILITIES

Milking Speed	99
Temperament	104
Likability	105

Dtr: 0 Herds: 0 65%R



Crackholm AltaRABO Dasha

- ▲ Farmer Favourite
- ▲ BPI 315 with 327 Aus Daughters
- ▲ 107 Type
- ▲ 110 Mam | A2A2
- ▲ Premier calving ease sire

BPI 315 87%
TWI 365 84%
HWI 268 78%

AltaRABO 011H011379

LONE-OAK-ACRES ALTARABO-ET
 MOGUL X OBSERVER X SHOTTLE
 H0USAM000069829746 | DOB 10/14/2012
 Genetic Code: A2

USA Proof



TYPE PROOF (ABV APRIL 2019)

Overall Type	107	Rear Set	95
Mammary System	110	Rear Leg Rear View	106
Stature	103	Udder Depth	110
Udder Texture	99	Fore Attachment	112
Bone Quality	107	Rear Attachment Height	113
Angularity	104	Rear Attachment Width	101
Muzzle Width	94	Centre Ligament	100
Body Depth	93	Teat Placement (front)	104
Chest Width	96	Teat Placement (rear)	98
Pin Width	104	Teat Length	98
Pin Set	103	Loin Strength	97
Foot Angle	100		

Dtr: 0 Herds: 9 78%R

ASI 142

PRODUCTION (ABV APRIL 2019)

Milk	800	L		
Fat	34	kg	0.00	%
Protein	23	kg	+0.03	%
Dtr: 327 Herds: 54 97%R				

HEALTH

Cell Count	174	92	%R
Survival	113	77	%R
Liveweight	99	80	%R
Dtr. Fertility	103	86	%R
Calving Ease	102	96	%R

WORKABILITIES

Milking Speed	102
Temperament	104
Likability	107

Dtr: 0 Herds: 15 91%R



- ▲ Moderate, open dairy frames
- ▲ Extreme Components yields
- ▲ Genuine CE 102
- ▲ High BPI (g) 313

BPI 313 66%
TWI 266 65%
HWI 233 59%

AltaGILMORE

011H012168

PEAK ALTAGILMORE-ET
 AltaTOPSHOT X YODER X LEXOR
 H0840M003138498826 | DOB 2/28/2017
 Genetic Code: A2

USA Proof



TYPE PROOF (ABV APRIL 2019)

Overall Type	96	Rear Set	99
Mammary System	99	Rear Leg Rear View	103
Stature	103	Udder Depth	104
Udder Texture	101	Fore Attachment	102
Bone Quality	100	Rear Attachment Height	98
Angularity	95	Rear Attachment Width	99
Muzzle Width	93	Centre Ligament	102
Body Depth	89	Teat Placement (front)	96
Chest Width	95	Teat Placement (rear)	97
Pin Width	97	Teat Length	97
Pin Set	98	Loin Strength	94
Foot Angle	95		

Dtr: 0 Herds: 0 60%R

ASI 199

PRODUCTION (ABV APRIL 2019)

Milk	358 L		
Fat	34 kg	+0.28	%
Protein	25 kg	+0.29	%

Dtr: 0 Herds: 0 77%R

HEALTH

Cell Count	159	67	%R
Survival	108	52	%R
Liveweight	98	61	%R
Dtr. Fertility	108	52	%R
Calving Ease	102	37	%R

WORKABILITIES

Milking Speed	101
Temperament	103
Likability	104

Dtr: 0 Herds: 0 63%R



- ▲ Modern day commercial bull
- ▲ High components, moderate frames and genuine CE
- ▲ CONCEPT PLUS
- ▲ Gets cows pregnant

BPI 312 69%
TWI 262 68%
HWI 259 62%

AltaNIXER

011H011758

PEAK AltaNIXER-ET
 YODER x SUPERSIRE
 H0840M003125434762 | DOB 4/5/2015
 Genetic Code: A2

USA Proof



TYPE PROOF (ABV APRIL 2019)

Overall Type	98	Rear Set	97
Mammary System	102	Rear Leg Rear View	101
Stature	101	Udder Depth	104
Udder Texture	99	Fore Attachment	98
Bone Quality	96	Rear Attachment Height	105
Angularity	97	Rear Attachment Width	102
Muzzle Width	99	Centre Ligament	102
Body Depth	94	Teat Placement (front)	97
Chest Width	101	Teat Placement (rear)	99
Pin Width	98	Teat Length	98
Pin Set	101	Loin Strength	95
Foot Angle	95		

Dtr: 0 Herds: 0 64%R

ASI 160

PRODUCTION (ABV APRIL 2019)

Milk	618 L		
Fat	32 kg	+0.08	%
Protein	24 kg	+0.14	%

Dtr: 0 Herds: 0 78%R

HEALTH

Cell Count	159	72	%R
Survival	110	58	%R
Liveweight	99	65	%R
Dtr. Fertility	111	58	%R
Calving Ease	104	59	%R

WORKABILITIES

Milking Speed	101
Temperament	102
Likability	104

Dtr: 0 Herds: 0 67%R



- ▲ Global leading AltaROBSON son
- ▲ International sire of sons
- ▲ High Production, Great Health and balanced type

BPI 309 65%
TWI 290 64%
HWI 246 58%

AltaLAWSON 011H012157

PEAK ALTALAWSON-ET
 AltaROBSON X DELTA X SUPERSIRE
 H0840M00314-2181099 | DOB 4/14/2017
 Genetic Code: A2

USA Proof



TYPE PROOF (ABV APRIL 2019)

Overall Type	102	Rear Set	99
Mammary System	102	Rear Leg Rear View	100
Stature	102	Udder Depth	109
Udder Texture	104	Fore Attachment	101
Bone Quality	107	Rear Attachment Height	104
Angularity	98	Rear Attachment Width	98
Muzzle Width	96	Centre Ligament	102
Body Depth	94	Teat Placement (front)	101
Chest Width	90	Teat Placement (rear)	99
Pin Width	96	Teat Length	94
Pin Set	102	Loin Strength	98
Foot Angle	101		

Dtr: 0 Herds: 0 58%R

ASI 174

PRODUCTION (ABV APRIL 2019)

Milk	21	L		
Fat	39	kg	+0.55	%
Protein	15	kg	+0.28	%
Dtr: 0 Herds: 0 77%R				

HEALTH

Cell Count	15	66	%R
Survival	112	51	%R
Liveweight	97	59	%R
Dtr. Fertility	107	50	%R
Calving Ease	102	31	%R

WORKABILITIES

Milking Speed	101
Temperament	102
Likability	105

Dtr: 0 Herds: 0 62%R



- ▲ Big dairy frames
- ▲ Balanced Production, Health and Calving traits
- ▲ Complete type sire

BPI 296 68%
TWI 314 67%
HWI 222 61%

AltaTOOHOT 011H011813

PEAK ALTATOOHOT-ET
 AltaHOTROD X MCCUTCHEN X SNOWMAN
 H0840M003129128854 | DOB 7/4/2015
 Genetic Code: -

USA Proof



TYPE PROOF (ABV APRIL 2019)

Overall Type	106	Rear Set	99
Mammary System	107	Rear Leg Rear View	101
Stature	110	Udder Depth	113
Udder Texture	103	Fore Attachment	105
Bone Quality	112	Rear Attachment Height	99
Angularity	103	Rear Attachment Width	100
Muzzle Width	99	Centre Ligament	108
Body Depth	97	Teat Placement (front)	111
Chest Width	93	Teat Placement (rear)	107
Pin Width	102	Teat Length	90
Pin Set	99	Loin Strength	98
Foot Angle	102		

Dtr: 0 Herds: 0 65%R

ASI 179

PRODUCTION (ABV APRIL 2019)

Milk	458	L		
Fat	30	kg	+0.15	%
Protein	25	kg	+0.23	%
Dtr: 0 Herds: 0 77%R				

HEALTH

Cell Count	151	68	%R
Survival	112	58	%R
Liveweight	104	65	%R
Dtr. Fertility	103	59	%R
Calving Ease	102	68	%R

WORKABILITIES

Milking Speed	104
Temperament	102
Likability	104

Dtr: 0 Herds: 0 69%R



- ▲ CONCEPT PLUS semen fertility
- ▲ 111 Daughter Fertility
- ▲ Smaller Frames and high components

BPI 294 68%
TWI 274 67%
HWI 255 61%

AltaWORMONT 011H011666

MELARRY ALTAWORMONT-ET
 SUPERSHOT X SHAN X SNOWMAN
 H0840M003128713944 | DOB 2/3/2015
 Genetic Code: -

USA Proof



TYPE PROOF (ABV APRIL 2019)

Overall Type	104	Rear Set	102
Mammary System	101	Rear Leg Rear View	102
Stature	98	Udder Depth	105
Udder Texture	100	Fore Attachment	100
Bone Quality	102	Rear Attachment Height	101
Angularity	95	Rear Attachment Width	99
Muzzle Width	100	Centre Ligament	100
Body Depth	98	Teat Placement (front)	105
Chest Width	101	Teat Placement (rear)	102
Pin Width	97	Teat Length	102
Pin Set	100	Loin Strength	96
Foot Angle	101		

Dtr: 0 Herds: 0 64%R

ASI 119

PRODUCTION (ABV APRIL 2019)

Milk	745	L		
Fat	21	kg	-0.15	%
Protein	22	kg	+0.04	%

Dtr: 0 Herds: 0 78%R

HEALTH

Cell Count	174	69	%R
Survival	111	57	%R
Liveweight	98	64	%R
Dtr. Fertility	111	58	%R
Calving Ease	105	59	%R

WORKABILITIES

Milking Speed	99
Temperament	102
Likability	1

Dtr: 0 Herds: 0 69%R



- ▲ A "No Holes" udder profile
- ▲ Extreme SCS and Health trait profile
- ▲ Moderate Frames

BPI 293 69%
TWI 283 68%
HWI 252 62%

AltaFANTASTIC 011H011905

PEAK ALTAFANTASTIC-ET
 SUPERSHOT X MCCUTCHEN X PLANET
 H0840M003132426481 | DOB 1/21/2016
 Genetic Code: A2

USA Proof



TYPE PROOF (ABV APRIL 2019)

Overall Type	103	Rear Set	105
Mammary System	107	Rear Leg Rear View	100
Stature	104	Udder Depth	105
Udder Texture	100	Fore Attachment	102
Bone Quality	101	Rear Attachment Height	106
Angularity	97	Rear Attachment Width	103
Muzzle Width	99	Centre Ligament	104
Body Depth	97	Teat Placement (front)	107
Chest Width	99	Teat Placement (rear)	103
Pin Width	101	Teat Length	97
Pin Set	103	Loin Strength	98
Foot Angle	93		

Dtr: 0 Herds: 0 64%R

ASI 119

PRODUCTION (ABV APRIL 2019)

Milk	955	L		
Fat	14	kg	-0.39	%
Protein	27	kg	+0.03	%

Dtr: 0 Herds: 0 78%R

HEALTH

Cell Count	173	69	%R
Survival	112	61	%R
Liveweight	101	65	%R
Dtr. Fertility	110	63	%R
Calving Ease	99	56	%R

WORKABILITIES

Milking Speed	98
Temperament	103
Likability	106

Dtr: 0 Herds: 0 70%R

Dam: Bomaz Bob 6207



- ▲ Great grazing sire
- ▲ Robust dairy frames, high component yields
- ▲ Great Health, Fertility and Calving traits
- ▲ Global sire of sons

BPI 283 68%
TWI 293 67%
HWI 227 61%

AltaROBSON

011H011778

BOMAZ ALTAROBSON-ET
 RUBICON X BOB X SHAMROCK
 HOUSAM000073953484 | DOB 8/24/2015
 Genetic Code: A2

USA Proof



ASI 141

PRODUCTION (ABV APRIL 2019)

Milk	178	L		
Fat	30	kg	+0.32	%
Protein	15	kg	+0.20	%

Dtr: 0 Herds: 0 78%R

HEALTH

Cell Count	156	69	%R
Survival	110	57	%R
Liveweight	100	64	%R
Dtr. Fertility	106	58	%R
Calving Ease	103	64	%R

WORKABILITIES

Milking Speed	102
Temperament	101
Likability	106

Dtr: 0 Herds: 0 69%R

TYPE PROOF (ABV APRIL 2019)

Overall Type	105	Rear Set	96
Mammary System	105	Rear Leg Rear View	103
Stature	102	Udder Depth	108
Udder Texture	100	Fore Attachment	105
Bone Quality	101	Rear Attachment Height	104
Angularity	96	Rear Attachment Width	102
Muzzle Width	99	Centre Ligament	102
Body Depth	96	Teat Placement (front)	102
Chest Width	98	Teat Placement (rear)	101
Pin Width	96	Teat Length	95
Pin Set	98	Loin Strength	101
Foot Angle	104		

Dtr: 0 Herds: 0 64%R



- ▲ High component production
- ▲ Great Health trait profile 113 Sur 109 DtrF
- ▲ Extreme Calving Ease 104

BPI 273 69%
TWI 257 68%
HWI 238 62%

AltaSTEEL

011H011724

Coomboona Super Regal-IMP-ET
 Super x Shottle
 HOAUSM000H01620990 | DOB 9/8/2010
 Genetic Code: A2

USA Proof



ASI 114

PRODUCTION (ABV APRIL 2019)

Milk	523	L		
Fat	35	kg	+0.18	%
Protein	15	kg	+0.02	%

Dtr: 0 Herds: 0 78%R

HEALTH

Cell Count	160	69	%R
Survival	113	59	%R
Liveweight	98	65	%R
Dtr. Fertility	109	61	%R
Calving Ease	104	66	%R

WORKABILITIES

Milking Speed	101
Temperament	103
Likability	105

Dtr: 0 Herds: 0 70%R

TYPE PROOF (ABV APRIL 2019)

Overall Type	101	Rear Set	95
Mammary System	102	Rear Leg Rear View	104
Stature	101	Udder Depth	107
Udder Texture	94	Fore Attachment	103
Bone Quality	100	Rear Attachment Height	106
Angularity	94	Rear Attachment Width	98
Muzzle Width	97	Centre Ligament	100
Body Depth	91	Teat Placement (front)	99
Chest Width	99	Teat Placement (rear)	100
Pin Width	94	Teat Length	102
Pin Set	102	Loin Strength	93
Foot Angle	102		

Dtr: 0 Herds: 0 65%R



- ▲ High production polled carrier
- ▲ CONCEPT PLUS semen fertility
- ▲ Great Health and Workability ratings

BPI 272 68%
TWI 243 67%
HWI 230 61%

AltaSLICK P 011H011677

PEAK ALTASLICK P-ET
 POWERBALL-P X SUPERSIRE X MASSEY
 H0840M003128043669 | DOB 1/28/2015
 Genetic Code: -

USA Proof



TYPE PROOF (ABV APRIL 2019)

Overall Type	101	Rear Set	101
Mammary System	102	Rear Leg Rear View	103
Stature	102	Udder Depth	104
Udder Texture	100	Fore Attachment	99
Bone Quality	102	Rear Attachment Height	103
Angularity	97	Rear Attachment Width	103
Muzzle Width	97	Centre Ligament	98
Body Depth	95	Teat Placement (front)	103
Chest Width	99	Teat Placement (rear)	96
Pin Width	99	Teat Length	98
Pin Set	100	Loin Strength	103
Foot Angle	95		

Dtr: 0 Herds: 0 64%R

ASI 123

PRODUCTION (ABV APRIL 2019)

Milk	655	L		
Fat	12	kg	-0.24	%
Protein	24	kg	+0.12	%
Dtr: 0 Herds: 0 78%R				

HEALTH

Cell Count	157	69	%R
Survival	109	58	%R
Liveweight	100	64	%R
Dtr. Fertility	109	59	%R
Calving Ease	103	59	%R

WORKABILITIES

Milking Speed	102
Temperament	103
Likability	104

Dtr: 0 Herds: 0 70%R



- ▲ High Component Production
- ▲ Great Workability ratings
- ▲ Excellent Mammary System bull +104

BPI 269 65%
TWI 237 64%
HWI 224 58%

AltaEMIRATES 011H012169

PEAK ALTAEMIRATES-ET
 AltaFLYWHEEL X SILVER X TANGO
 H0840M003139733285 | DOB 2/19/2017
 Genetic Code: -

USA Proof



TYPE PROOF (ABV APRIL 2019)

Overall Type	99	Rear Set	98
Mammary System	104	Rear Leg Rear View	103
Stature	105	Udder Depth	106
Udder Texture	103	Fore Attachment	100
Bone Quality	106	Rear Attachment Height	104
Angularity	96	Rear Attachment Width	99
Muzzle Width	94	Centre Ligament	104
Body Depth	93	Teat Placement (front)	105
Chest Width	97	Teat Placement (rear)	101
Pin Width	99	Teat Length	96
Pin Set	92	Loin Strength	92
Foot Angle	99		

Dtr: 0 Herds: 0 58%R

ASI 152

PRODUCTION (ABV APRIL 2019)

Milk	380	L		
Fat	29	kg	+0.19	%
Protein	20	kg	+0.18	%
Dtr: 0 Herds: 0 77%R				

HEALTH

Cell Count	147	67	%R
Survival	107	50	%R
Liveweight	100	60	%R
Dtr. Fertility	107	49	%R
Calving Ease	100	34	%R

WORKABILITIES

Milking Speed	101
Temperament	103
Likability	105

Dtr: 0 Herds: 0 62%R



- ▲ Magnificent Mammary at 108
- ▲ Great Health and High Fertility
- ▲ CONCEPT PLUS, A2A2 and genuine CE 103
- ▲ Available sexed

BPI 256 68%
TWI 268 67%
HWI 209 61%

AltaRECOIL 011H011736

PEAK ALTARECOIL-ET
 AltaSPRING X JACEY X ROBUST
 H0840M003130641796 | DOB 5/28/2015
 Genetic Code: A2

USA Proof



TYPE PROOF (ABV APRIL 2019)

Overall Type	104
Mammary System	108
Stature	101
Udder Texture	105
Bone Quality	104
Angularity	98
Muzzle Width	98
Body Depth	100
Chest Width	101
Pin Width	98
Pin Set	97
Foot Angle	103

Rear Set	96
Rear Leg Rear View	105
Udder Depth	105
Fore Attachment	105
Rear Attachment Height	110
Rear Attachment Width	103
Centre Ligament	109
Teat Placement (front)	99
Teat Placement (rear)	102
Teat Length	91
Loin Strength	96

Dtr: 0 Herds: 0 64%R

ASI 139

PRODUCTION (ABV APRIL 2019)

Milk	422 L		
Fat	19 kg	+0.02	%
Protein	21 kg	+0.19	%

Dtr: 0 Herds: 0 78%R

HEALTH

Cell Count	145	69	%R
Survival	109	58	%R
Liveweight	101	64	%R
Dtr. Fertility	105	59	%R
Calving Ease	103	67	%R

WORKABILITIES

Milking Speed	101
Temperament	102
Likability	105

Dtr: 0 Herds: 0 69%R



- ▲ Premium PP Sire with no PowerBall
- ▲ A2A2, Extreme Survival 111
- ▲ Breed Leading Daughter Fertility
- ▲ Great Mammary profile

BPI 249 65%
TWI 225 64%
HWI 246 58%

AltaTHOR PP 011H012220

KOEPON ALTATHOR PP
 ANSWER PO X OHIO STYLE P X MIXER
 H0NLDM000586898277 | DOB 7/29/2017
 Genetic Code: A2

USA Proof



TYPE PROOF (ABV APRIL 2019)

Overall Type	100
Mammary System	106
Stature	100
Udder Texture	102
Bone Quality	101
Angularity	95
Muzzle Width	95
Body Depth	89
Chest Width	93
Pin Width	96
Pin Set	99
Foot Angle	102

Rear Set	97
Rear Leg Rear View	97
Udder Depth	108
Fore Attachment	104
Rear Attachment Height	106
Rear Attachment Width	98
Centre Ligament	104
Teat Placement (front)	105
Teat Placement (rear)	102
Teat Length	92
Loin Strength	94

Dtr: 0 Herds: 0 56%R

ASI 47

PRODUCTION (ABV APRIL 2019)

Milk	178 L		
Fat	9 kg	+0.02	%
Protein	7 kg	+0.04	%

Dtr: 0 Herds: 0 77%R

HEALTH

Cell Count	158	67	%R
Survival	111	49	%R
Liveweight	95	59	%R
Dtr. Fertility	115	49	%R
Calving Ease	102	27	%R

WORKABILITIES

Milking Speed	101
Temperament	102
Likability	103

Dtr: 0 Herds: 0 61%R



- ▲ Great Type 104 & Mammary 107
- ▲ High Survival 110 & great Daughter Fertility 111
- ▲ CONCEPT PLUS and A2A2

BPI 246 66%
TWI 249 65%
HWI 206 59%

AltaABBA

011H012264

PEAK ALTAABBA-ET
 BLOWTORCH X RUBICON X MCCUTCHEN
 H0840M00314-2181416 | DOB 5/31/2017
 Genetic Code: A2

USA Proof



TYPE PROOF (ABV APRIL 2019)

Overall Type	104	Rear Set	100
Mammary System	107	Rear Leg Rear View	103
Stature	107	Udder Depth	105
Udder Texture	103	Fore Attachment	106
Bone Quality	109	Rear Attachment Height	106
Angularity	95	Rear Attachment Width	99
Muzzle Width	94	Centre Ligament	104
Body Depth	95	Teat Placement (front)	107
Chest Width	95	Teat Placement (rear)	106
Pin Width	99	Teat Length	90
Pin Set	98	Loin Strength	99
Foot Angle	99		

Dtr: 0 Herds: 0 61%R

ASI 96

PRODUCTION (ABV APRIL 2019)

Milk	463	L		
Fat	26	kg	+0.10	%
Protein	14	kg	+0.02	%
Dtr: 0 Herds: 0 77%R				

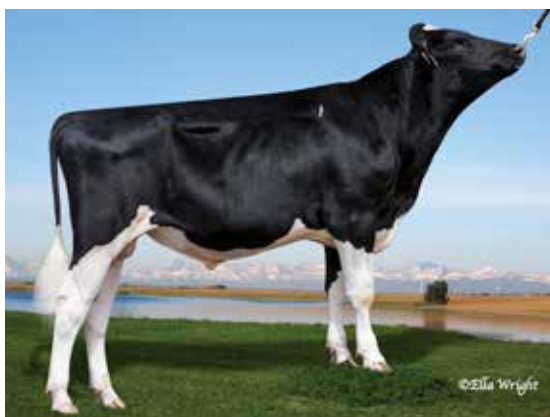
HEALTH

Cell Count	148	67	%R
Survival	110	53	%R
Liveweight	102	61	%R
Dtr. Fertility	111	52	%R
Calving Ease	102	32	%R

WORKABILITIES

Milking Speed	100
Temperament	102
Likability	104

Dtr: 0 Herds: 0 65%R



- ▲ A2A2 with Milk
- ▲ Great Mammary
- ▲ Extreme Survival 112 and great Daughter Fertility
- ▲ CE 103

BPI 244 68%
TWI 245 67%
HWI 230 62%

AltaKARMA

011H011838

PEAK ALTAKARMA-ET
 AltaSPRING X CASHCOIN X ROBUST
 H0840M003133371421 | DOB 10/7/2015
 Genetic Code: A2

USA Proof



TYPE PROOF (ABV APRIL 2019)

Overall Type	102	Rear Set	102
Mammary System	106	Rear Leg Rear View	99
Stature	102	Udder Depth	108
Udder Texture	102	Fore Attachment	106
Bone Quality	108	Rear Attachment Height	110
Angularity	100	Rear Attachment Width	96
Muzzle Width	94	Centre Ligament	105
Body Depth	91	Teat Placement (front)	100
Chest Width	95	Teat Placement (rear)	106
Pin Width	101	Teat Length	93
Pin Set	96	Loin Strength	93
Foot Angle	94		

Dtr: 0 Herds: 0 64%R

ASI 77

PRODUCTION (ABV APRIL 2019)

Milk	675	L		
Fat	16	kg	-0.18	%
Protein	17	kg	-0.03	%
Dtr: 0 Herds: 0 78%R				

HEALTH

Cell Count	152	69	%R
Survival	112	58	%R
Liveweight	97	65	%R
Dtr. Fertility	109	60	%R
Calving Ease	103	59	%R

WORKABILITIES

Milking Speed	102
Temperament	103
Likability	105

Dtr: 0 Herds: 0 70%R



- ▲ Globally popular Flush Sire
- ▲ Great Mammary
- ▲ High yields
- ▲ A2A2

BPI 244 65%
TWI 224 64%
HWI 210 58%

AltaHOTHAND 011H012178

PEAK ALTAHOTHAND-ET
 HOTLINE X MONTROSS X DAY
 H0840M003140986351 | DOB 5/3/2017
 Genetic Code: A2

USA Proof

A2

TYPE PROOF (ABV APRIL 2019)

Overall Type	100	Rear Set	99
Mammary System	106	Rear Leg Rear View	98
Stature	105	Udder Depth	107
Udder Texture	105	Fore Attachment	101
Bone Quality	114	Rear Attachment Height	106
Angularity	102	Rear Attachment Width	101
Muzzle Width	94	Centre Ligament	104
Body Depth	92	Teat Placement (front)	103
Chest Width	90	Teat Placement (rear)	102
Pin Width	94	Teat Length	99
Pin Set	99	Loin Strength	93
Foot Angle	99		

Dtr: 0 Herds: 0 57%R

ASI 120

PRODUCTION (ABV APRIL 2019)

Milk	888	L		
Fat	27	kg	-0.16	%
Protein	23	kg	-0.01	%

Dtr: 0 Herds: 0 77%R

HEALTH

Cell Count	153	67	%R
Survival	110	50	%R
Liveweight	98	60	%R
Dtr. Fertility	107	50	%R
Calving Ease	102	36	%R

WORKABILITIES

Milking Speed	100
Temperament	101
Likability	104

Dtr: 0 Herds: 0 62%R



- ▲ Breed leading Health & Fertility
- ▲ Sur 110, Dtr Fert 115, SCS 167
- ▲ High component production
- ▲ Genuine CE 103
- ▲ Leader for US PL

BPI 242 67%
TWI 207 66%
HWI 225 60%

AltaDEPOT 011H011954

PEAK ALTADEPOT-ET
 HOTSHOT X MONTROSS X DAY
 H0840M003131664037 | DOB 3/26/2016
 Genetic Code: -

USA Proof

TYPE PROOF (ABV APRIL 2019)

Overall Type	98	Rear Set	97
Mammary System	100	Rear Leg Rear View	101
Stature	101	Udder Depth	106
Udder Texture	98	Fore Attachment	103
Bone Quality	108	Rear Attachment Height	103
Angularity	96	Rear Attachment Width	96
Muzzle Width	98	Centre Ligament	101
Body Depth	90	Teat Placement (front)	97
Chest Width	96	Teat Placement (rear)	95
Pin Width	95	Teat Length	102
Pin Set	94	Loin Strength	95
Foot Angle	101		

Dtr: 0 Herds: 0 61%R

ASI 74

PRODUCTION (ABV APRIL 2019)

Milk	325	L		
Fat	20	kg	+0.09	%
Protein	10	kg	+0.03	%

Dtr: 0 Herds: 0 77%R

HEALTH

Cell Count	167	69	%R
Survival	110	54	%R
Liveweight	97	62	%R
Dtr. Fertility	115	55	%R
Calving Ease	103	59	%R

WORKABILITIES

Milking Speed	99
Temperament	100
Likability	102

Dtr: 0 Herds: 0 63%R



- ▲ Outcross pedigree Eldorado x Denver
- ▲ Great Dairy Strength with a "No holes" linear
- ▲ High Component Production

BPI 241 66%
TWI 239 65%
HWI 186 59%

AltaORINOCO 011H012316

PEAK ALTAORINOCO-ET
 ELDORADO X DENVER X BALISTO
 H0840M003145229871 | DOB 9/23/2017
 Genetic Code: A2

USA Proof



TYPE PROOF (ABV APRIL 2019)

Overall Type	101	Rear Set	95
Mammary System	105	Rear Leg Rear View	101
Stature	101	Udder Depth	102
Udder Texture	103	Fore Attachment	104
Bone Quality	106	Rear Attachment Height	105
Angularity	101	Rear Attachment Width	99
Muzzle Width	94	Centre Ligament	105
Body Depth	100	Teat Placement (front)	102
Chest Width	94	Teat Placement (rear)	101
Pin Width	93	Teat Length	97
Pin Set	99	Loin Strength	97
Foot Angle	105		

Dtr: 0 Herds: 0 59%R

ASI 144

PRODUCTION (ABV APRIL 2019)

Milk	294 L		
Fat	31 kg	+0.27	%
Protein	17 kg	+0.17	%
Dtr: 0 Herds: 0 77%R			

HEALTH

Cell Count	152	67	%R
Survival	108	52	%R
Liveweight	99	60	%R
Dtr. Fertility	103	52	%R
Calving Ease	101	32	%R

WORKABILITIES

Milking Speed	102
Temperament	102
Likability	105

Dtr: 0 Herds: 0 63%R



- ▲ Extreme Semen fertility CONCEPT PLUS rated
- ▲ Popular Commercial bull with ample Chest Width
- ▲ A2A2

BPI 240 68%
TWI 201 67%
HWI 212 61%

AltaEXEMPLAR 011H011747

NO-FLA ALTAEXEMPLAR-ET
 AltaGENUITY X SUPERSIRE X ERDMAN
 H0840M003129449398 | DOB 5/13/2015
 Genetic Code: A2

USA Proof



TYPE PROOF (ABV APRIL 2019)

Overall Type	99	Rear Set	99
Mammary System	100	Rear Leg Rear View	100
Stature	99	Udder Depth	104
Udder Texture	97	Fore Attachment	99
Bone Quality	103	Rear Attachment Height	102
Angularity	98	Rear Attachment Width	97
Muzzle Width	95	Centre Ligament	101
Body Depth	97	Teat Placement (front)	101
Chest Width	99	Teat Placement (rear)	102
Pin Width	95	Teat Length	98
Pin Set	99	Loin Strength	100
Foot Angle	95		

Dtr: 0 Herds: 0 64%R

ASI 101

PRODUCTION (ABV APRIL 2019)

Milk	526 L		
Fat	13 kg	-0.14	%
Protein	19 kg	+0.09	%
Dtr: 0 Herds: 0 77%R			

HEALTH

Cell Count	163	69	%R
Survival	108	58	%R
Liveweight	99	65	%R
Dtr. Fertility	110	59	%R
Calving Ease	103	60	%R

WORKABILITIES

Milking Speed	98
Temperament	103
Likability	104

Dtr: 0 Herds: 0 69%R



- ▲ One of AtaROSON's best!
- ▲ High Production, Great Health and improved Type
- ▲ CONCEPT PLUS
- ▲ A2A2 and Calving Ease

BPI 237 66%
TWI 221 65%
HWI 187 59%

AltaLIAISON

011H012159

PEAK ALTALIAISON-ET
 AltaROBSON X DELTA X SUPERSIRE
 H0840M00314-2181106 | DOB 4/23/2017
 Genetic Code: A2

USA Proof



TYPE PROOF (ABV APRIL 2019)

Overall Type	102	Rear Set	99
Mammary System	103	Rear Leg Rear View	103
Stature	101	Udder Depth	103
Udder Texture	105	Fore Attachment	100
Bone Quality	107	Rear Attachment Height	104
Angularity	100	Rear Attachment Width	103
Muzzle Width	97	Centre Ligament	104
Body Depth	98	Teat Placement (front)	98
Chest Width	94	Teat Placement (rear)	104
Pin Width	95	Teat Length	95
Pin Set	98	Loin Strength	97
Foot Angle	98		

Dtr: 0 Herds: 0 60%R

ASI 124

PRODUCTION (ABV APRIL 2019)

Milk	611 L		
Fat	23 kg		-0.04 %
Protein	21 kg		+0.08 %

Dtr: 0 Herds: 0 77%R

HEALTH

Cell Count	153	66 %R
Survival	108	53 %R
Liveweight	98	61 %R
Dtr. Fertility	105	53 %R
Calving Ease	102	31 %R

WORKABILITIES

Milking Speed	103
Temperament	101
Likability	105

Dtr: 0 Herds: 0 64%R



- ▲ Extreme Components
- ▲ High Likability 106
- ▲ Great Mammary trait profile
- ▲ CONCEPT PLUS rated and A2A2

BPI 236 67%
TWI 231 66%
HWI 193 60%

AltaMOCON

011H012277

PEAK ALTAMOCON-ET
 MODESTY X RUBICON X RANSOM
 H0840M00314-2181462 | DOB 6/23/2017
 Genetic Code: A2

USA Proof



TYPE PROOF (ABV APRIL 2019)

Overall Type	101	Rear Set	95
Mammary System	104	Rear Leg Rear View	99
Stature	98	Udder Depth	105
Udder Texture	100	Fore Attachment	104
Bone Quality	105	Rear Attachment Height	106
Angularity	96	Rear Attachment Width	101
Muzzle Width	97	Centre Ligament	100
Body Depth	95	Teat Placement (front)	101
Chest Width	92	Teat Placement (rear)	98
Pin Width	92	Teat Length	99
Pin Set	97	Loin Strength	98
Foot Angle	98		

Dtr: 0 Herds: 0 62%R

ASI 144

PRODUCTION (ABV APRIL 2019)

Milk	407 L		
Fat	39 kg		+0.31 %
Protein	17 kg		+0.11 %

Dtr: 0 Herds: 0 77%R

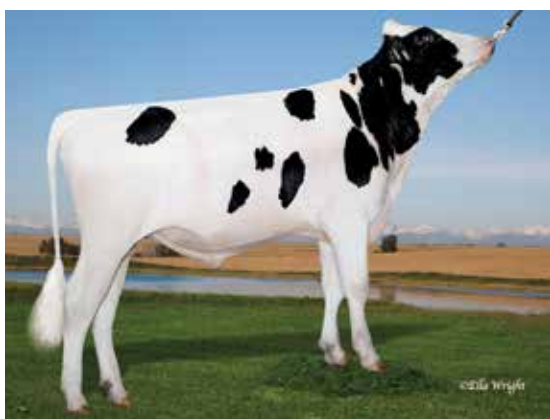
HEALTH

Cell Count	143	69 %R
Survival	109	53 %R
Liveweight	95	63 %R
Dtr. Fertility	103	54 %R
Calving Ease	103	34 %R

WORKABILITIES

Milking Speed	100
Temperament	102
Likability	106

Dtr: 0 Herds: 0 65%R



- ▲ A2A2 and PP sire
- ▲ Extreme Daughter Fertility 113
- ▲ 20kgs Protein +0.12%

BPI 235 68%
TWI 192 67%
HWI 209 61%

AltaTRUM PP 011H011723

PEAK ALTATRUM PP-ET
 POWERBALL-P X EARNHARDT P X COLT P-RED
 H0840M003128365038 | DOB 4/4/2015
 Genetic Code: A2

USA Proof

A2

TYPE PROOF (ABV APRIL 2019)

Overall Type	98	Rear Set	105
Mammary System	101	Rear Leg Rear View	99
Stature	104	Udder Depth	105
Udder Texture	102	Fore Attachment	100
Bone Quality	107	Rear Attachment Height	107
Angularity	98	Rear Attachment Width	97
Muzzle Width	95	Centre Ligament	99
Body Depth	86	Teat Placement (front)	99
Chest Width	89	Teat Placement (rear)	98
Pin Width	98	Teat Length	97
Pin Set	101	Loin Strength	97
Foot Angle	95		

Dtr: 0 Herds: 0 64%R

ASI 100

PRODUCTION (ABV APRIL 2019)

Milk	515 L		
Fat	7 kg		-0.21 %
Protein	20 kg		+0.12 %

Dtr: 0 Herds: 0 77%R

HEALTH

Cell Count	129	68 %R
Survival	106	57 %R
Liveweight	96	65 %R
Dtr. Fertility	113	57 %R
Calving Ease	101	65 %R

WORKABILITIES

Milking Speed	102
Temperament	100
Likability	103

Dtr: 0 Herds: 0 68%R



Clear Crest Hotshot 2763

- ▲ Smaller Stature with improved Chest Width
- ▲ High Milk flow 903 L
- ▲ Extreme Daughter Fertility 114
- ▲ Genuine CE at 103

BPI 233 71%
TWI 244 71%
HWI 207 66%

AltaHOTSHOT 011H011523

BRYHILL ALTAHOTSHOT-ET
 PRIDE X CAMERON X MAN-O-MAN
 H0CANM000108559119 | DOB 12/15/2013
 Genetic Code: -

USA Proof

♀ 511

TYPE PROOF (ABV APRIL 2019)

Overall Type	103	Rear Set	102
Mammary System	103	Rear Leg Rear View	99
Stature	98	Udder Depth	105
Udder Texture	97	Fore Attachment	106
Bone Quality	100	Rear Attachment Height	104
Angularity	96	Rear Attachment Width	95
Muzzle Width	100	Centre Ligament	99
Body Depth	98	Teat Placement (front)	105
Chest Width	99	Teat Placement (rear)	102
Pin Width	95	Teat Length	98
Pin Set	90	Loin Strength	102
Foot Angle	95		

Dtr: 0 Herds: 1 77%R

ASI 78

PRODUCTION (ABV APRIL 2019)

Milk	903 L		
Fat	32 kg		-0.10 %
Protein	16 kg		-0.16 %

Dtr: 22 Herds: 3 75%R

HEALTH

Cell Count	137	84 %R
Survival	108	64 %R
Liveweight	98	80 %R
Dtr. Fertility	114	75 %R
Calving Ease	103	68 %R

WORKABILITIES

Milking Speed	102
Temperament	103
Likability	104

Dtr: 0 Herds: 0 74%R



- ▲ Extreme SCS 173
- ▲ No holes Mammary
- ▲ 109 Dtr Fertility

BPI 215 42%
TWI 201 41%
HWI 206 38%

AltaCLAIM 011H011863

BUTLerview ALTACLAIM-ET
 SUPERSHOT X HALOGEN X MOGUL
 H0840M003133630023 | DOB 12/29/2015
 Genetic Code: -

USA Proof



TYPE PROOF (ABV APRIL 2019)

Overall Type	101	Rear Set	101
Mammary System	103	Rear Leg Rear View	101
Stature	101	Udder Depth	105
Udder Texture	100	Fore Attachment	101
Bone Quality	101	Rear Attachment Height	103
Angularity	94	Rear Attachment Width	100
Muzzle Width	98	Centre Ligament	101
Body Depth	93	Teat Placement (front)	102
Chest Width	98	Teat Placement (rear)	101
Pin Width	97	Teat Length	101
Pin Set	99	Loin Strength	98
Foot Angle	99		

Dtr: 0 Herds: 0 41%R

ASI 49

PRODUCTION (ABV APRIL 2019)

Milk	639 L		
Fat	5 kg	-0.32	%
Protein	15 kg	-0.04	%

Dtr: 0 Herds: 0 47%R

HEALTH

Cell Count	173	43	%R
Survival	107	32	%R
Liveweight	99	42	%R
Dtr. Fertility	109	38	%R
Calving Ease	102	56	%R

WORKABILITIES

Milking Speed	100
Temperament	103
Likability	104

Dtr: 0 Herds: 0 42%R



- ▲ 112 Daughter Fertility
- ▲ 148 SCS
- ▲ Plus Components

BPI 210 70%
TWI 179 69%
HWI 186 63%

AltaMENTO 011H011598

PEAK ALTAMENTO-ET
 AHEAD X SHAMROCK X SHOTTLE
 H0840M003125475808 | DOB 7/12/2014
 Genetic Code: A2

USA Proof



TYPE PROOF (ABV APRIL 2019)

Overall Type	100	Rear Set	99
Mammary System	100	Rear Leg Rear View	100
Stature	103	Udder Depth	108
Udder Texture	102	Fore Attachment	100
Bone Quality	103	Rear Attachment Height	99
Angularity	96	Rear Attachment Width	93
Muzzle Width	94	Centre Ligament	103
Body Depth	92	Teat Placement (front)	107
Chest Width	98	Teat Placement (rear)	105
Pin Width	100	Teat Length	101
Pin Set	98	Loin Strength	100
Foot Angle	95		

Dtr: 0 Herds: 0 65%R

ASI 68

PRODUCTION (ABV APRIL 2019)

Milk	236 L		
Fat	13 kg	+0.04	%
Protein	10 kg	+0.07	%

Dtr: 0 Herds: 0 80%R

HEALTH

Cell Count	148	75	%R
Survival	108	58	%R
Liveweight	99	66	%R
Dtr. Fertility	112	60	%R
Calving Ease	103	60	%R

WORKABILITIES

Milking Speed	100
Temperament	101
Likability	102

Dtr: 0 Herds: 0 68%R



- ▲ Great Mammary profile
- ▲ High Milk 862ltrs and improved Dtr Fertility 107
- ▲ Jet black and A2A2

BPI 210 67%
TWI 209 66%
HWI 188 60%

AltaPOSH

011H012280

PEAK ALTAPOSH-ET
 MODESTY X RUGER X FACEBOOK
 H0840M003145229968 | DOB 6/27/2017
 Genetic Code: A2

USA Proof



TYPE PROOF (ABV APRIL 2019)

Overall Type	103	Rear Set	98
Mammary System	105	Rear Leg Rear View	97
Stature	103	Udder Depth	107
Udder Texture	103	Fore Attachment	103
Bone Quality	108	Rear Attachment Height	108
Angularity	99	Rear Attachment Width	97
Muzzle Width	97	Centre Ligament	105
Body Depth	92	Teat Placement (front)	102
Chest Width	91	Teat Placement (rear)	101
Pin Width	96	Teat Length	99
Pin Set	94	Loin Strength	95
Foot Angle	100		

Dtr: 0 Herds: 0 61%R

ASI 88

PRODUCTION (ABV APRIL 2019)

Milk	862	L		
Fat	22	kg	-0.21	%
Protein	19	kg	-0.07	%
Dtr: 0 Herds: 0 77%R				

HEALTH

Cell Count	133	69	%R
Survival	110	53	%R
Liveweight	97	62	%R
Dtr. Fertility	107	54	%R
Calving Ease	103	31	%R

WORKABILITIES

Milking Speed	103
Temperament	102
Likability	105

Dtr: 0 Herds: 0 65%R



- ▲ High Milk PP bull
- ▲ Different pedi gree; by AltaCASUAL P RC
- ▲ Exrtreme Daughter Fertility 111 and great SCS 150

BPI 204 67%
TWI 182 66%
HWI 186 61%

AltaARIC PP

011H012039

KOEPON ALTAARIC PP-ET
 AltaCASUAL P X OHIO STYLE P X MIXER
 HONLDM000734691514 | DOB 7/25/2016
 Genetic Code: -

USA Proof



TYPE PROOF (ABV APRIL 2019)

Overall Type	101	Rear Set	97
Mammary System	103	Rear Leg Rear View	96
Stature	102	Udder Depth	107
Udder Texture	97	Fore Attachment	101
Bone Quality	101	Rear Attachment Height	107
Angularity	96	Rear Attachment Width	98
Muzzle Width	95	Centre Ligament	102
Body Depth	91	Teat Placement (front)	101
Chest Width	97	Teat Placement (rear)	101
Pin Width	97	Teat Length	99
Pin Set	99	Loin Strength	98
Foot Angle	103		

Dtr: 0 Herds: 0 62%R

ASI 59

PRODUCTION (ABV APRIL 2019)

Milk	708	L		
Fat	14	kg	-0.23	%
Protein	15	kg	-0.08	%
Dtr: 0 Herds: 0 77%R				

HEALTH

Cell Count	150	69	%R
Survival	109	55	%R
Liveweight	98	63	%R
Dtr. Fertility	111	56	%R
Calving Ease	101	31	%R

WORKABILITIES

Milking Speed	101
Temperament	100
Likability	103

Dtr: 0 Herds: 0 65%R



MGD: Butlerview
Pixie SS57453

- ▲ A Red bull with Prod and Type
- ▲ Extreme SCS 174
- ▲ Great Type 104 & Mammary 104
- ▲ High Survival and improved Dtr Fert

BPI	202	66%
TWI	209	65%
HWI	193	59%

▶ **TYPE PROOF** (ABV APRIL 2019)

Overall Type	104	Rear Set	95
Mammary System	104	Rear Leg Rear View	103
Stature	103	Udder Depth	105
Udder Texture	97	Fore Attachment	103
Bone Quality	100	Rear Attachment Height	108
Angularity	94	Rear Attachment Width	99
Muzzle Width	101	Centre Ligament	101
Body Depth	92	Teat Placement (front)	103
Chest Width	101	Teat Placement (rear)	98
Pin Width	97	Teat Length	99
Pin Set	99	Loin Strength	103
Foot Angle	98		

Dtr: 0 Herds: 0 59%R

AltaC-RED

011H000592

BLONDIN ALTAC-RED-ET
SALVATORE RC X RUBICON X SUPERSIRE
HOCANM000110621397 | DOB 8/29/2017
Genetic Code: -

USA Proof



▶ **ASI** 46

▶ **PRODUCTION** (ABV APRIL 2019)

Milk	653	L	
Fat	8	kg	-0.29 %
Protein	14	kg	-0.07 %
Dtr: 0 Herds: 0 77%R			

▶ **HEALTH**

Cell Count	174	66	%R
Survival	111	52	%R
Liveweight	100	60	%R
Dtr. Fertility	107	51	%R
Calving Ease	103	33	%R

▶ **WORKABILITIES**

Milking Speed	99
Temperament	103
Likability	104

Dtr: 0 Herds: 0 63%R



- ▲ A2A2 with AUS Milking Daughters
- ▲ High Milk 772 ltrs
- ▲ Great Dtr Fert 109
- ▲ High Survival 110
- ▲ Great SCS 158
- ▲ High Type 106
- ▲ Mammary 107

BPI	193	83%
TWI	207	81%
HWI	195	75%

▶ **TYPE PROOF** (ABV APRIL 2019)

Overall Type	106	Rear Set	104
Mammary System	107	Rear Leg Rear View	104
Stature	106	Udder Depth	108
Udder Texture	105	Fore Attachment	103
Bone Quality	109	Rear Attachment Height	106
Angularity	104	Rear Attachment Width	98
Muzzle Width	94	Centre Ligament	105
Body Depth	93	Teat Placement (front)	109
Chest Width	91	Teat Placement (rear)	103
Pin Width	102	Teat Length	97
Pin Set	97	Loin Strength	101
Foot Angle	95		

Dtr: 0 Herds: 0 79%R

AltaJAKE

011H011422

T-SPRUCE ALTAJAKE-ET
PETRONE X OBSERVER X GOLDWYN
HOUSAM000072395545 | DOB 2/19/2013
Genetic Code: A2

USA Proof



▶ **ASI** 15

▶ **PRODUCTION** (ABV APRIL 2019)

Milk	772	L	
Fat	6	kg	-0.39 %
Protein	12	kg	-0.17 %
Dtr: 98 Herds: 20 92%R			

▶ **HEALTH**

Cell Count	158	86	%R
Survival	110	72	%R
Liveweight	100	81	%R
Dtr. Fertility	109	84	%R
Calving Ease	102	72	%R

▶ **WORKABILITIES**

Milking Speed	102
Temperament	104
Likability	102

Dtr: 0 Herds: 5 80%R



- ▲ PP and A2A2
- ▲ High Milk 577lbs
- ▲ Great Dtr Fert 110
- ▲ Extreme Survival 109 and a nice Mammary profile

BPI 185 66%
TWI 177 65%
HWI 197 59%

AltaREX PP 011H012098

KOEPON ALTAREX PP-ET
 ANSWER PO X POWERBALL-P X AltaOAK
 HONLDM000685696167 | DOB 2/22/2017
 Genetic Code: A2

USA Proof



TYPE PROOF (ABV APRIL 2019)

Overall Type	99	Rear Set	102
Mammary System	104	Rear Leg Rear View	96
Stature	97	Udder Depth	108
Udder Texture	97	Fore Attachment	106
Bone Quality	100	Rear Attachment Height	107
Angularity	97	Rear Attachment Width	95
Muzzle Width	94	Centre Ligament	101
Body Depth	93	Teat Placement (front)	105
Chest Width	93	Teat Placement (rear)	102
Pin Width	92	Teat Length	97
Pin Set	95	Loin Strength	97
Foot Angle	100		

Dtr: 0 Herds: 0 59%R

ASI 39

PRODUCTION (ABV APRIL 2019)

Milk	577	L	
Fat	9	kg	-0.23 %
Protein	12	kg	-0.07 %

Dtr: 0 Herds: 0 77%R

HEALTH

Cell Count	133	67	%R
Survival	109	52	%R
Liveweight	94	60	%R
Dtr. Fertility	110	51	%R
Calving Ease	102	30	%R

WORKABILITIES

Milking Speed	102
Temperament	100
Likability	103

Dtr: 0 Herds: 0 63%R



- ▲ Homozygous Polled (PP), RED and A2A2
- ▲ High Milk flow with improved Dtr Fertility 106
- ▲ Great Survival & SCS 146 ratings

BPI 179 65%
TWI 177 63%
HWI 173 58%

AltaLUX PP-RED 011H000589

SIMPLE-DREAMS LUX PP-RED-ET
 LUCKY PP-RED X MONTROSS X EFFECT P-RED
 H0840M003145456256 | DOB 10/13/2017
 Genetic Code: A2

USA Proof



TYPE PROOF (ABV APRIL 2019)

Overall Type	100	Rear Set	94
Mammary System	104	Rear Leg Rear View	103
Stature	97	Udder Depth	106
Udder Texture	97	Fore Attachment	104
Bone Quality	105	Rear Attachment Height	109
Angularity	97	Rear Attachment Width	99
Muzzle Width	93	Centre Ligament	101
Body Depth	93	Teat Placement (front)	99
Chest Width	95	Teat Placement (rear)	100
Pin Width	96	Teat Length	96
Pin Set	102	Loin Strength	98
Foot Angle	102		

Dtr: 0 Herds: 0 56%R

ASI 59

PRODUCTION (ABV APRIL 2019)

Milk	662	L	
Fat	16	kg	-0.18 %
Protein	14	kg	-0.07 %

Dtr: 0 Herds: 0 77%R

HEALTH

Cell Count	146	67	%R
Survival	111	49	%R
Liveweight	95	59	%R
Dtr. Fertility	106	48	%R
Calving Ease	103	29	%R

WORKABILITIES

Milking Speed	100
Temperament	100
Likability	103

Dtr: 0 Herds: 0 60%R



- ▲ Alta CONCEPT PLUS and A2A2
- ▲ Extreme Survival
- ▲ Daughter Fertility
- ▲ Calving Ease 102
- ▲ Great SCS 159

BPI 171 66%
TWI 149 65%
HWI 148 59%

AltaOSCAR 011H012060

PEAK ALTAOSCAR-ET
 AltaKERMIT X YODER X LEXOR
 H0840M003138498720 | DOB 11/11/2016
 Genetic Code: A2

USA Proof



TYPE PROOF (ABV APRIL 2019)

Overall Type	100	Rear Set	99
Mammary System	103	Rear Leg Rear View	99
Stature	106	Udder Depth	107
Udder Texture	103	Fore Attachment	101
Bone Quality	106	Rear Attachment Height	102
Angularity	98	Rear Attachment Width	99
Muzzle Width	91	Centre Ligament	105
Body Depth	92	Teat Placement (front)	102
Chest Width	95	Teat Placement (rear)	105
Pin Width	99	Teat Length	93
Pin Set	100	Loin Strength	99
Foot Angle	100		

Dtr: 0 Herds: 0 60%R

ASI 34

PRODUCTION (ABV APRIL 2019)

Milk	1055	L	
Fat	13	kg	-0.47 %
Protein	17	kg	-0.22 %

Dtr: 0 Herds: 0 77%R

HEALTH

Cell Count	159	67 %R
Survival	111	53 %R
Liveweight	100	61 %R
Dtr. Fertility	112	52 %R
Calving Ease	102	50 %R

WORKABILITIES

Milking Speed	100
Temperament	99
Likability	103

Dtr: 0 Herds: 0 64%R



Dam: Miller-FF Ssire Exotic-ET

- ▲ Extremely good semen fertility results in Australia
- ▲ CONCEPT PLUS and A2A2
- ▲ Extreme Health
- ▲ 171 SCS and 111 Survival

BPI 164 68%
TWI 155 67%
HWI 136 62%

AltaKERMIT 011H011672

PEAK ALTAKERMIT-ET
 KINGBOY X SUPERSIRE X SHOTTLE
 H0840M003126668077 | DOB 2/18/2015
 Genetic Code: A2

USA Proof



TYPE PROOF (ABV APRIL 2019)

Overall Type	102	Rear Set	104
Mammary System	103	Rear Leg Rear View	98
Stature	106	Udder Depth	108
Udder Texture	99	Fore Attachment	101
Bone Quality	101	Rear Attachment Height	103
Angularity	96	Rear Attachment Width	99
Muzzle Width	98	Centre Ligament	105
Body Depth	95	Teat Placement (front)	101
Chest Width	100	Teat Placement (rear)	100
Pin Width	100	Teat Length	100
Pin Set	96	Loin Strength	98
Foot Angle	97		

Dtr: 0 Herds: 0 64%R

ASI 42

PRODUCTION (ABV APRIL 2019)

Milk	616	L	
Fat	18	kg	-0.13 %
Protein	10	kg	-0.12 %

Dtr: 0 Herds: 0 78%R

HEALTH

Cell Count	171	69 %R
Survival	111	58 %R
Liveweight	103	64 %R
Dtr. Fertility	109	60 %R
Calving Ease	101	65 %R

WORKABILITIES

Milking Speed	99
Temperament	99
Likability	102

Dtr: 0 Herds: 0 70%R



- ▲ CONCEPT PLUS and A2A2
- ▲ High Milk flow 692ltrs
- ▲ Nice Type 104 and Mammary 107
- ▲ Calving Ease 103

BPI 158 68%
TWI 179 67%
HWI 140 61%

AltaHELICON 011H011706

PEAK ALTAHELICON ET
 AltaSPRING X HILL X MAN-O-MAN
 HONLDM000751487334 | DOB 3/7/2015
 Genetic Code: A2

USA Proof



TYPE PROOF (ABV APRIL 2019)

Overall Type	104	Rear Set	97
Mammary System	107	Rear Leg Rear View	102
Stature	101	Udder Depth	108
Udder Texture	108	Fore Attachment	104
Bone Quality	105	Rear Attachment Height	108
Angularity	103	Rear Attachment Width	98
Muzzle Width	99	Centre Ligament	107
Body Depth	97	Teat Placement (front)	104
Chest Width	98	Teat Placement (rear)	108
Pin Width	99	Teat Length	98
Pin Set	93	Loin Strength	93
Foot Angle	102		

Dtr: 0 Herds: 0 63%R

ASI 82

PRODUCTION (ABV APRIL 2019)

Milk	692 L		
Fat	21 kg	-0.12	%
Protein	16 kg	-0.04	%

Dtr: 0 Herds: 0 78%R

HEALTH

Cell Count	135	69	%R
Survival	107	56	%R
Liveweight	99	64	%R
Dtr. Fertility	100	56	%R
Calving Ease	103	63	%R

WORKABILITIES

Milking Speed	101
Temperament	100
Likability	103

Dtr: 0 Herds: 0 66%R



- ▲ Extreme fat prod
- ▲ #1 JPI sire +201
- ▲ Great Type and Mammary ratings
- ▲ Improved Workability ratings
- ▲ Heifer Sexed CONCEPT PLUS

BPI 185 69%
TWI 227 68%
HWI 139 63%

STEVE 011JE01259

CDF IRWIN STEVE
 IRWIN X DOMINICAN X Q IMPULS
 JE840M003006436334 | DOB 8/25/2014
 Genetic Code: A2

USA Proof



TYPE PROOF (ABV APRIL 2019)

Overall Type	107	Rear Set	96
Mammary System	106	Rear Leg Rear View	102
Stature	106	Udder Depth	106
Udder Texture	100	Fore Attachment	106
Bone Quality	97	Rear Attachment Height	105
Angularity	102	Rear Attachment Width	100
Muzzle Width	102	Centre Ligament	102
Body Depth	98	Teat Placement (front)	103
Chest Width	100	Teat Placement (rear)	102
Pin Width	99	Teat Length	98
Pin Set	102	Loin Strength	102
Foot Angle	103		

Dtr: 0 Herds: 0 67%R

ASI 114

PRODUCTION (ABV APRIL 2019)

Milk	-27 L		
Fat	32 kg	+0.64	%
Protein	8 kg	+0.19	%

Dtr: 0 Herds: 0 77%R

HEALTH

Cell Count	137	79	%R
Survival	109	57	%R
Liveweight	104	72	%R
Dtr. Fertility	98	57	%R
Calving Ease	101	49	%R

WORKABILITIES

Milking Speed	102
Temperament	103
Likability	104

Dtr: 0 Herds: 0 63%R



- ▲ #2 Fully Registered JPI Sire +197
- ▲ High Component yields and A2A2
- ▲ Great Survival 106 & High Daughter Fertility 103

BPI 112 69%
TWI 102 68%
HWI 78 63%

VICEROY

011JE01179

CDF VICEROY-ET
 DOMINICAN X Q IMPULS X PARAMOUNT
 JE840M003002447507 | DOB 6/20/2012
 Genetic Code: A2

USA Proof



TYPE PROOF (ABV APRIL 2019)

Overall Type	98	Rear Set	101
Mammary System	97	Rear Leg Rear View	95
Stature	104	Udder Depth	103
Udder Texture	97	Fore Attachment	103
Bone Quality	97	Rear Attachment Height	100
Angularity	97	Rear Attachment Width	93
Muzzle Width	93	Centre Ligament	98
Body Depth	100	Teat Placement (front)	97
Chest Width	102	Teat Placement (rear)	101
Pin Width	102	Teat Length	102
Pin Set	101	Loin Strength	98
Foot Angle	103		

Dtr: 0 Herds: 0 70%R

ASI 70

PRODUCTION (ABV APRIL 2019)

Milk	404	L		
Fat	17	kg	-0.09	%
Protein	12	kg	-0.05	%
Dtr: 27 Herds: 3 75%R				

HEALTH

Cell Count	122	81	%R
Survival	106	62	%R
Liveweight	103	75	%R
Dtr. Fertility	103	74	%R
Calving Ease	101	68	%R

WORKABILITIES

Milking Speed	102
Temperament	102
Likability	101

Dtr: 0 Herds: 1 60%R



- ▲ PP, A2 and 511 CONCEPT PLUS sire
- ▲ Improved production
- ▲ Great Type and Mammary

BPI 66 63%
TWI 84 61%
HWI 52 55%

VALERGO-PP

011JE01294

ALL LYNNS NIKON VALERGO-PP
 NIKON-P X CRITIC-P X PARAMOUNT
 JEUSAM000119288203 | DOB 3/28/2015
 Genetic Code: A2

USA Proof



TYPE PROOF (ABV APRIL 2019)

Overall Type	103	Rear Set	97
Mammary System	102	Rear Leg Rear View	97
Stature	103	Udder Depth	107
Udder Texture	105	Fore Attachment	100
Bone Quality	108	Rear Attachment Height	101
Angularity	106	Rear Attachment Width	101
Muzzle Width	101	Centre Ligament	105
Body Depth	95	Teat Placement (front)	98
Chest Width	96	Teat Placement (rear)	104
Pin Width	99	Teat Length	100
Pin Set	101		97
Foot Angle	97		

Dtr: 0 Herds: 0 51%R

ASI 52

PRODUCTION (ABV APRIL 2019)

Milk	75	L		
Fat	10	kg	+0.12	%
Protein	6	kg	+0.07	%
Dtr: 0 Herds: 0 74%R				

HEALTH

Cell Count	125	66	%R
Survival	107	46	%R
Liveweight	99	54	%R
Dtr. Fertility	95	49	%R
Calving Ease	101	37	%R

WORKABILITIES

Milking Speed	100
Temperament	102
Likability	102

Dtr: 0 Herds: 0 58%R



- ▲ A2A2, CONCEPT PLUS and 511 CONCEPT PLUS
- ▲ High milk yield 534ltrs with shallow Udders
- ▲ Improved SCS 128

BPI 66 52%
TWI 77 50%
HWI 21 45%

AltaWISHBONE {4}

011JE01329

JX GRAZELAND PT ALTAWISHBONE {4}
 JX LEONEL {3} X PLUS {5} X Q IMPULS
 JEUSAM000067771271 | DOB 6/11/2016
 Genetic Code: A2

USA Proof



TYPE PROOF (ABV APRIL 2019)

Overall Type	100	Rear Set	95
Mammary System	100	Rear Leg Rear View	102
Stature	110	Udder Depth	107
Udder Texture	101	Fore Attachment	103
Bone Quality	102	Rear Attachment Height	102
Angularity	99	Rear Attachment Width	98
Muzzle Width	100	Centre Ligament	96
Body Depth	99	Teat Placement (front)	100
Chest Width	101	Teat Placement (rear)	98
Pin Width	101	Teat Length	102
Pin Set	98	Loin Strength	100
Foot Angle	104		

Dtr: 0 Herds: 0 39%R

ASI 82

PRODUCTION (ABV APRIL 2019)

Milk	534	L		
Fat	17	kg	-0.22	%
Protein	15	kg	-0.06	%

Dtr: 0 Herds: 0 62%R

HEALTH

Cell Count	128	56	%R
Survival	104	35	%R
Liveweight	107	42	%R
Dtr. Fertility	95	39	%R
Calving Ease	107	17	%R

WORKABILITIES

Milking Speed	99
Temperament	103
Likability	103

Dtr: 0 Herds: 0 42%R



- ▲ VICEROY son
- ▲ Improved SCS 126
- ▲ Good Workability ratings

BPI 48 55%
TWI 32 53%
HWI 35 48%

AltaMONTRA {6}

011JE01369

JX PEAK ALTAMONTRA {6}-ET
 VICEROY X HARRIS X DIMENSION
 JE840M003140986383 | DOB 10/10/2017
 Genetic Code: -

USA Proof



TYPE PROOF (ABV APRIL 2019)

Overall Type	95	Rear Set	99
Mammary System	97	Rear Leg Rear View	101
Stature	102	Udder Depth	103
Udder Texture	99	Fore Attachment	101
Bone Quality	99	Rear Attachment Height	98
Angularity	96	Rear Attachment Width	97
Muzzle Width	97	Centre Ligament	96
Body Depth	95	Teat Placement (front)	97
Chest Width	98	Teat Placement (rear)	99
Pin Width	98	Teat Length	101
Pin Set	101	Loin Strength	99
Foot Angle	100		

Dtr: 0 Herds: 0 40%R

ASI 40

PRODUCTION (ABV APRIL 2019)

Milk	162	L		
Fat	5	kg	-0.08	%
Protein	7	kg	+0.03	%

Dtr: 0 Herds: 0 67%R

HEALTH

Cell Count	126	59	%R
Survival	103	37	%R
Liveweight	99	44	%R
Dtr. Fertility	98	40	%R
Calving Ease	103	23	%R

WORKABILITIES

Milking Speed	101
Temperament	101
Likability	102

Dtr: 0 Herds: 0 45%R



- ▲ High component commercial sire
- ▲ CONCEPT PLUS and 511 CONCEPT PLUS sire

BPI 42 48%
TWI 55 46%
HWI 40 42%

AltaAGILE {3}

011JE01344

JX AVI-LANCHE ALTAAGILE {3}
 JX MARLO {2} X COMBO {3} X CHALLENGER
 JE840M003131652148 | DOB 9/14/2016
 Genetic Code: -

USA Proof



ASI 5

PRODUCTION (ABV APRIL 2019)

Milk	-269 L		
Fat	8 kg	+0.42	%
Protein	-5 kg	+0.09	%
Dtr: 0 Herds: 0 59%R			

HEALTH

Cell Count	124	52	%R
Survival	106	31	%R
Liveweight	100	38	%R
Dtr. Fertility	99	35	%R
Calving Ease	112	10	%R

WORKABILITIES

Milking Speed	102
Temperament	100
Likability	101

Dtr: 0 Herds: 0 36%R

TYPE PROOF (ABV APRIL 2019)

Overall Type	100	Rear Set	97
Mammary System	100	Rear Leg Rear View	101
Stature	103	Udder Depth	109
Udder Texture	100	Fore Attachment	103
Bone Quality	101	Rear Attachment Height	101
Angularity	100	Rear Attachment Width	96
Muzzle Width	101	Centre Ligament	101
Body Depth	95	Teat Placement (front)	101
Chest Width	98	Teat Placement (rear)	100
Pin Width	99	Teat Length	101
Pin Set	100	Loin Strength	98
Foot Angle	104		

Dtr: 0 Herds: 0 35%R



- ▲ A2A2, CONCEPT PLUS and 511 CONCEPT PLUS
- ▲ Improved Milk yield 243ltrs

BPI 40 57%
TWI 19 55%
HWI 27 50%

AltaCHIVE

011JE01326

MFW ALTACHIVE-ET
 REGENCY X DAYBREAK X PLUS {5}
 JEUSAM000119691058 | DOB 4/25/2016
 Genetic Code: A2

USA Proof



ASI 46

PRODUCTION (ABV APRIL 2019)

Milk	243 L		
Fat	3 kg	-0.19	%
Protein	9 kg	+0.02	%
Dtr: 0 Herds: 0 68%R			

HEALTH

Cell Count	112	61	%R
Survival	104	40	%R
Liveweight	99	48	%R
Dtr. Fertility	98	43	%R
Calving Ease	111	16	%R

WORKABILITIES

Milking Speed	101
Temperament	100
Likability	100

Dtr: 0 Herds: 0 48%R

TYPE PROOF (ABV APRIL 2019)

Overall Type	96	Rear Set	95
Mammary System	97	Rear Leg Rear View	100
Stature	102	Udder Depth	105
Udder Texture	99	Fore Attachment	99
Bone Quality	97	Rear Attachment Height	100
Angularity	98	Rear Attachment Width	94
Muzzle Width	98	Centre Ligament	99
Body Depth	93	Teat Placement (front)	99
Chest Width	97	Teat Placement (rear)	99
Pin Width	94	Teat Length	99
Pin Set	96	Loin Strength	98
Foot Angle	103		

Dtr: 0 Herds: 0 45%R



- ▲ A2A2 and CONCEPT PLUS rated sire
- ▲ Great SCS 138, Survival 108 and Dtr Fertility 103
- ▲ Improved Milk yield 280ltrs

BPI 26 52%

TWI 37 50%

HWI 26 46%

AltaLEMOR {3}

011JE01330

JX ROWLEYS ALTALEMOR {3}-ET
 JX AVON {2} X PHAROAH X HENDRIX
 JEUSAM000067792215 | DOB 8/6/2016
 Genetic Code: A2

USA Proof



▶ TYPE PROOF (ABV APRIL 2019)

Overall Type	100	Rear Set	96
Mammary System	100	Rear Leg Rear View	101
Stature	105	Udder Depth	110
Udder Texture	99	Fore Attachment	104
Bone Quality	97	Rear Attachment Height	102
Angularity	97	Rear Attachment Width	98
Muzzle Width	99	Centre Ligament	99
Body Depth	99	Teat Placement (front)	97
Chest Width	101	Teat Placement (rear)	101
Pin Width	98	Teat Length	103
Pin Set	100	Loin Strength	99
Foot Angle	103		

Dtr: 0 Herds: 0 40%R

▶ ASI -22

▶ PRODUCTION (ABV APRIL 2019)

Milk	280	L	
Fat	-6	kg	-0.39 %
Protein	2	kg	-0.15 %
<i>Dtr: 0 Herds: 0 63%R</i>			

▶ HEALTH

Cell Count	138	56	%R
Survival	108	35	%R
Liveweight	103	43	%R
Dtr. Fertility	103	39	%R
Calving Ease	102	18	%R

▶ WORKABILITIES

Milking Speed	98
Temperament	100
Likability	102

Dtr: 0 Herds: 0 43%R