

Spring 2024

# ALTA GENETICS

## *Beef Directory*



To our valued clients,

## At Alta our mission is simple. CREATE VALUE, BUILD TRUST AND DELIVER RESULTS.

We are focused on bringing you a solution for your operation whilst ensuring you are well supported with advice and assistance from your local Alta Beef Advisors. We are dedicated to helping you make decisions that meet your needs with skilled Alta people in beef breeding business as well as skilled Alta people in beef reproduction.

In recent times we've had great success with our existing breeder sires in Baldrige 38 Special, Ellingson Three Rivers, and the high fertility sire Woodhill Patent. We are pleased to be able to offer these proven sires again this year as well as some new additions to the Alta Program.

New US additions for 24 include Yon Flagship, BA7 Oaks Bold Ruler and red sire Bieber Paycheck.

We are proud to add to our domestic team, Ascot Statesman S429, Ascot Revolution R320 and Paringa Real Deal T57, and from across the ditch, Rissington Titan T330. This new line-up of bulls offers market proven pedigrees and performance from leading breeders.

As part of the URUS family, we welcome Leachman Cattle Co and are excited with all the opportunities this brings in the future for beef breeding programs through their \$Profit selection index.

At Alta, we provide a cross section of bulls across breeds from Angus through to Wagyu and everything in between. Along with our range of genetics and breeds, we also provide experienced advice on how to get the most out of your program, creating more pregnancies, more live calves, more end value to your beef business.

If you would like to hear first about new sire releases, beef updates and the locations our beef team will be traveling to throughout the year, please sign up to our beef newsletter & follow along on our social media.

We look forward to seeing and hearing from you throughout the season.

Happy Breeding!

*Your Alta Beef Team*



Sign up for our newsletter



Follow us on facebook



**YOUR ALTA BEEF TEAM!**

# CULMINATION

\$40

ANGUS

011AN02260

K C F Bennett Culmination <sup>PVPV</sup>



## PEDIGREE

- ▲ Female sexed semen available
- ▲ Exceptional calving ease, breed leading performance and carcass merit
- ▲ Top 2% growth EBVs, Milk, CW + Indexes
- ▲ Top 7% EMA & positive fats

Connealy Consensus  
K C F Bennett Consent Y75  
K C F Miss Protege W148

### K C F Bennett Summation

S S Objective T510 OT26  
Thomas Patricia 9705  
Thomas Patricia 71138

K C F Bennett Energizer  
K C F Bennett Homestead  
K C F Miss Quality P164

### K C F Miss Homestead C452

Connealy Contrast  
K C F Miss Contrast Z607  
Thomas Patricia 9705



## BULL INFORMATION

Registration #	USA19749024
Birthdate	30/10/2019
Genetic Testing	AMF,CAF,DDF,NHF,DWF,MAF,MHF,OHF,OSF,RGF

## SELECTION INDEX

	\$A	\$A-L
Index Value	\$277	\$458
Breed Average	\$200	\$344
Perc	2	1

	CED %	CEDtrs %	GL days	BW kg	200 days	400 days	600 days	MCW kg	Milk kg	SC cm	DTC days	CWT kg	EMA sq.cm	RIB F mm	RUMPF mm	RBV	IMF	Doc	Claw	Foot Angle	Leg Angle
EBV	+7.1	+1.7	+1.4	+1.8	+69	+121	+161	+126	+28	+1.1	-3.0	+106	+11.8	+2.4	+3.4	+0.2	+2.6	+20	+0.80	+0.96	+0.96
Acc	68%	52%	93%	92%	89%	86%	85%	82%	78%	81%	37%	79%	76%	72%	70%	64%	78%	72%	88%	89%	51%
Perc	11	65	99	11	2	2	2	17	2	84	84	1	7	9	6	65	39	50	41	47	28

FIGTREE PARK ANGUS

Ascot Statesman S429 <sup>PVPV</sup>



- ▲ Super standout Prime Minister son
- ▲ Balanced and attractive EBVs
- ▲ Calving ease, short gestation, moderate birth, above average growth, fats & IMF



Same dam as Hallmark H147 – semen available

### PEDIGREE

H P C A Intensity  
 Rennylea L508  
 Rennylea H414  
**Dunoon Prime Minister P758**  
 TE Mania Emperor E343  
 Dunoon Japara M1008  
 Dunoon Japara D247  
 Booroomooka Neutron A238  
 Millah Murrah Digby D108  
 Millah Murrah Flower A70  
**Millah Murrah Brenda F123**  
 TE Mania Infinity O4 379  
 Millah Murrah Brenda D113  
 Millah Murrah Brenda B21



### BULL INFORMATION

Registration #	QQF21S429
Birthdate	29/09/2021
Genetic Testing	AMFU,CAFU,DDFU,NHFU

### SELECTION INDEX

	\$A	\$A-L
Index Value	\$197	\$349
Breed Average	\$200	\$344
Perc	57	50

	CED %	CEDtrs %	GL days	BW kg	200 days	400 days	600 days	MCW kg	Milk kg	SC cm	DTC days	CWT kg	EMA sq.cm	RIB F mm	RUMPF mm	RBV	IMF	Doc	Claw	Foot Angle	Leg Angle
EBV	+6.3	+9.1	-9.2	+3.4	+42	+84	+118	+88	+23	+4.1	-4.7	+60	+3.8	+0.8	+0.9	-0.2	+3.5	+4	+0.58	+0.72	+0.90
Acc	67%	59%	83%	83%	84%	83%	83%	80%	77%	81%	48%	73%	73%	72%	73%	65%	76%	79%	76%	76%	74%
Perc	16	3	3	36	85	74	53	72	10	5	48	71	79	31	29	84	21	97	7	6	15

ASCOT CATTLE CO

Ascot Revolution R320 <sup>SVS</sup>



- ▲ Standout Paratrooper son from the heart of Ascot + Millah Murrah
- ▲ Elite carcass merit, growth & structural soundness
- ▲ Top 1% Claw + Foot Angle

### PEDIGREE

EF Complement 8088  
 EF Commando 1366  
 Riverbend Young Lucy W1470

— **Millah Murrah Paratrooper P15**  
 Millah Murrah Highlander G18  
 Millah Murrah Ela M9  
 Millah Murrah Ela K127

TE Mania Emperor E343  
 Ascot Hallmark H147  
 Millah Murrah Brenda F123

— **Ascot Brenda K358**  
 Carrington Park Time On B7  
 Millah Murrah Brenda F167  
 Millah Murrah Brenda D131



### BULL INFORMATION

Registration #	QQFR320
Birthdate	11/04/2020
Genetic Testing	AMF,CAF,DDF,NHF,DWF,MAF,MHF,OHF,OSF,RGF

### SELECTION INDEX

	\$A	\$A-L
Index Value	\$263	\$406
Breed Average	\$200	\$344
Perc	4	11

	CED %	CEDtrs %	GL days	BW kg	200 days	400 days	600 days	MCW kg	Milk kg	SC cm	DTC days	CWT kg	EMA sq. cm	RIB F mm	RUMPF mm	RBV	IMF	Doc	Claw	Foot Angle	Leg Angle
EBV	+2.8	+6.1	-4.3	+5.0	+57	+99	+128	+85	+24	+4.0	-4.4	+77	+11.7	-2.2	-3.2	+1.4	+3.6	+24	+0.30	+0.54	+0.86
Acc	69%	60%	86%	91%	89%	88%	87%	84%	76%	84%	47%	77%	73%	75%	75%	68%	76%	81%	81%	75%	80%
Perc	46	19	51	72	23	28	31	76	9	6	55	23	7	90	90	8	19	36	1	1	9

# DEEP RIVER

**\$50** (>50 STRAWS \$40)

011AN02280

Ellingson Deep River <sup>PVPV</sup>



- ▲ Displays tremendous power and mass packed into a bold-middled, sharp-fronted package
- ▲ Combines phenotypic prominence, outstanding performance and maternal heritage
- ▲ Top 1% growth EBVs, MCW, CW + \$A-L



Progeny



Progeny

## PEDIGREE

CTS Remedy 1T01  
 Ellingson Homestead 6030  
 EA Erica 1082  
**Ellingson Three Rivers 8062**  
 Ellingson Chaps 4095  
 EA Emblynette 6279  
 EA Emblynette 2159  
 Koupal Juneau 797  
 Koupal Advance 28  
 Koupal Ebonette 734  
**EA Primrose 5083**  
 LT Territory 5824 of EA  
 EA Primrose 3102  
 EA Primrose 9155



## BULL INFORMATION

Registration #	USA19853339
Birthdate	02/03/2020
Genetic Testing	AMF,CAF,DDF,NHF,DWF,MAF,MHF,OHF,OSF,RGF

## SELECTION INDEX

	\$A	\$A-L
Index Value	\$269	\$503
Breed Average	\$200	\$344
Perc	3	1

	CED %	CEDtrs %	GL days	BW kg	200 days	400 days	600 days	MCW kg	Milk kg	SC cm	DTC days	CWT kg	EMA sq.cm	RIB F mm	RUMPF mm	RBV	IMF	Doc	Claw	Foot Angle	Leg Angle
EBV	+5.1	+7.7	-5.6	+5.2	+77	+139	+184	+183	+20	+3.2	-5.1	+106	+6.2	-1.4	-2.7	+0.6	+2.1	+21	+1.12	+0.84	+0.94
Acc	61%	47%	81%	85%	85%	84%	83%	80%	77%	82%	35%	77%	76%	72%	70%	65%	78%	72%	94%	93%	54%
Perc	25	8	31	76	1	1	1	1	29	17	38	1	52	79	86	41	52	46	92	20	23

011AN02263

Ellingson Three Rivers 8062 <sup>PVPV</sup>



- ▲ Breed leader for weaning & yearling growth
- ▲ Sires big bodied, stout, high performing cattle
- ▲ Top 1% Foot Angle
- ▲ Popular high performance sire with exceptional structure - Top 1% growth EBVs & CW



Progeny: Granite Ridge Mistress U138 SJK23U138 Progeny: Merridale Vicky T87 CMD22T87

## PEDIGREE

Connealy Thunder  
 CTS Remedy 1T01  
 CTS 7V03 Bellemere Maid 9T02

**Ellingson Homestead 6030**  
 LT Territory 5824 of EA  
 EA Erica 1082  
 S A V Alliance 2606

S A V Resource 1441  
 Ellingson Chaps 4095  
 E A Blackcap 0360

**EA Emblynette 6279**  
 Sitz Upward 307R  
 EA Emblynette 2159  
 EA Emblynette 434



## BULL INFORMATION

Registration #	USA19203618
Birthdate	20/02/2018
Genetic Testing	AMF,CAF,DDF,NHF,DWF,MAF,MHF,OHF,OSF,RGF

SELECTION INDEX	\$A	\$A-L
Index Value	\$244	\$422
Breed Average	\$200	\$344
Perc	11	6

	CED %	CEDtrs %	GL days	BW kg	200 days	400 days	600 days	MCW kg	Milk kg	SC cm	DTC days	CWT kg	EMA sq.cm	RIB F mm	RUMPF mm	RBV	IMF	Doc	Claw	Foot Angle	Leg Angle
EBV	-8.3	+3.6	-4.2	+8.5	+76	+143	+179	+161	+20	+1.4	-4.1	+103	+7.7	-2.1	-4.3	+0.9	+2.1	+20	+0.78	+0.48	+0.94
Acc	75%	52%	98%	98%	97%	96%	93%	87%	80%	93%	42%	83%	83%	81%	79%	74%	83%	89%	97%	96%	54%
Perc	97	45	53	99	1	1	1	2	27	75	63	1	34	89	96	24	52	51	36	1	23

# Baldrige 38 SPECIAL<sup>PVPV</sup> USA18229487

\$45



Basin Franchise P142  
 EF Complement 8088  
 EF Everelda Entense 6117

**EF Commando 1366**

B/R Ambush 28  
 Riverbend Young Lucy W1470  
 Riverbend Young Lucy T1080

Sitz Upward 307R  
 Styles Upgrade J59  
 Plainview Lassie 71B

**Baldrige Isabel Y69**

Baldrige Kaboom K243 KCF  
 Baldrige Isabel T935  
 Baldrige Isabel P4527



SELECTION INDEX	\$A	\$A-L
Index Value	\$248	\$418
Breed Average	\$200	\$344
Perc	9	7

"38 Special has produced thick, deep bodied, easy doing well muscled sons for us that have been real commercial producer favourites for his balance of calving ease and progeny performance. 38 Special may bring a touch more frame and length to his progeny and they are very profitable commercially relevant cattle for the Australian industry. We are not at all surprised to see the impact & popularity Baldrige 38 Special sons are having around the country."

*Colin Keevers & Dr Lisa Martin BVSc – Alummy Creek Angus, Tenterfield*



Alummy Creek 38 Special S092



Glatz Black Angus 38 Special R32

"We have sold 38 Special sons in our last 3 sales at Glatz's Black Angus. They have seen strong demand from our commercial clients and stud breeders alike. 38 Special progeny are born easily from heifers and exhibit explosive growth and the robust shape we like with an ideal maturity pattern. Our oldest 38 Special daughters have performed particularly well in production. They have very neat udders and held great condition whilst weaning heavy calves. We recommend 38 Special to improve foot structure and consistency of type. Two 38 Special sons have been retained for stud duties at Glatz's Black Angus."

*Ben Glatz – Glatz Black Angus*

"38 Special has proven to be one of the most outstanding bulls we have used in recent years. In the avalanche of Isabel Y96 descendants that have recently flooded in from the US he has given us the most bang for our buck of all we have sampled. His sons are quiet, structurally well put together, whilst provide calving ease without sacrificing growth and muscle. His daughters have risen to the top of our herd on the back of their excellent phenotype and paperwork a number finding their way into the nucleus of our herd."

*Simon Falkiner – Murdeduke Angus*



Murdeduke 38 Special S393

	CED %	CEDtrs %	GL days	BW kg	200 days	400 days	600 days	MCW kg	Milk kg	SC cm	DTC days	CWT kg	EMA sq.cm	RIB F mm	RUMPF mm	RBV	IMF	Doc	Claw	Foot Angle	Leg Angle
EBV	+7.2	+4.2	-5.0	+2.5	+63	+109	+143	+106	+19	+2.6	-5.0	+76	+6.2	+1.6	-0.7	-0.4	+3.0	+15	+0.62	+0.78	+0.90
Acc	93%	81%	99%	99%	98%	98%	98%	97%	96%	98%	66%	93%	91%	91%	90%	87%	91%	99%	99%	99%	95%
Perc	11	38	40	20	7	10	10	43	34	32	41	26	52	18	56	89	30	74	11	11	15



# BOLD RULER

\$45

ANGUS

011AN02345

BA7 Oaks Bold Ruler <sup>PVPV</sup>



- ▲ Highly sought after genetics with proven performance within his pedigree
- ▲ Outstanding combination of performance, maternal & carcass traits
- ▲ Outstanding Confidence Plus son out of Erica of Ellston T220

## PEDIGREE

Connealy Tobin  
 Connealy Confidence 0100  
 Becka Gala of Conanga 8281

### Connealy Confidence Plus

Connealy Consensus  
 of Conanga 1209  
 Elbasta of Conanga 9703

EF Commando 1366  
 Baldrige 38 Special  
 Baldrige Isabel Y69

### Erica of Ellston T220

Bruns Top Cut 373  
 Erica of Ellston R96  
 Erica of Ellston M38



## BULL INFORMATION

Registration #	USA19984739
Birthdate	05/01/2021
Genetic Testing	AMF,CAF,DDF,NHF,DWF,MAF,MHF,OHF,OSF,RGF

## SELECTION INDEX

	\$A	\$A-L
Index Value	\$299	\$459
Breed Average	\$200	\$344
Perc	1	1

	CED %	CEDtrs %	GL days	BW kg	200 days	400 days	600 days	MCW kg	Milk kg	SC cm	DTC days	CWT kg	EMA sq.cm	RIB F mm	RUMPF mm	RBV	IMF	Doc	Claw	Foot Angle	Leg Angle
EBV	+1.7	+5.4	-3.0	+2.9	+75	+126	+150	+100	+24	+0.9	-4.9	+98	+10.8	-3.7	-5.4	+1.4	+1.6	+26	+0.88	+0.92	+0.96
Acc	64%	52%	82%	85%	85%	84%	83%	80%	79%	80%	39%	77%	76%	73%	71%	66%	78%	74%	74%	73%	60%
Perc	57	25	72	26	1	1	5	52	9	88	43	2	10	98	99	8	66	28	58	37	28

011AN01498

Woodhill Patent <sup>PVPV</sup>



- ▲ Premier calving ease sire – ideal for next heifer program
- ▲ Tremendous amount of body & mass with exceptional growth
- ▲ Descendant of Miss Traveler 58, the foundation of the Woodhill Evergreen family



Progeny: Araluen T110



Progeny: NKS21558 at DSK Angus

### PEDIGREE

Hoover Dam  
Baldrige Xpand x743  
Baldrige Queen S87

#### Baldrige Colonel C251

Styles Upgrade J59  
Baldrige Isabel Y69  
Baldrige Isabel T935

Basin Franchise P142  
EF Complement 8088  
EF Everelda Entense 6117

#### Woodhill Evergreen Y10-C62

S A V Final Answer 0035  
Woodhill Evergreen W269-Y10  
Woodhill Evergreen 22P-W269



### BULL INFORMATION

Registration #	USA19199070
Birthdate	02/02/2018
Genetic Testing	AMF,CAF,DDF,NHF,DWF,MAF,MHF,OHF,OSF,RGF

### SELECTION INDEX

	\$A	\$A-L
Index Value	\$248	\$445
Breed Average	\$200	\$344
Perc	9	2

	CED %	CEDtrs %	GL days	BW kg	200 days	400 days	600 days	MCW kg	Milk kg	SC cm	DTC days	CWT kg	EMA sq.cm	RIB F mm	RUMPF mm	RBV	IMF	Doc	Claw	Foot Angle	Leg Angle
EBV	+8.9	+9.3	-6.7	+2.0	+66	+120	+152	+126	+16	+2.9	-5.7	+81	+3.3	-1.7	-2.8	+0.2	+1.3	+25	+0.82	+1.04	+1.06
Acc	73%	58%	96%	96%	94%	93%	93%	87%	81%	91%	47%	83%	82%	80%	79%	73%	83%	82%	81%	82%	65%
Perc	4	2	18	13	4	3	4	18	60	24	26	15	83	84	87	65	74	31	45	67	60

# FLAGSHIP

\$40

011AN02431

Yon Flagship <sup>PVPV</sup>



- ▲ Featured & high selling bull at Yon Family Farms
- ▲ His exceptional calving ease along with performance & merit is rarely surpassed

G A R Sure Fire  
G A R Sure Fire 6404  
G A R Complete N281

**NEW**

**GB Fireball 672**

G A R Anticipation  
GB Anticipation 432  
GB Ambush 269

SydGen Exceed 3223  
SydGen Enhance  
SydGen Rita 2618

**Yon Queen G1085**

S A V Final Answer 0035  
Yon Queen C27  
Yon Queen A43

### BULL INFORMATION

Registration #	USA20024449
Birthdate	20/10/2020
Genetic Testing	AMF,CAF,DDF,NHF,DWF,MAF,MHF,OHF,OSF,RGF

SELECTION INDEX	\$A	\$A-L
Index Value	\$279	\$465
Breed Average	\$200	\$344
Perc	1	1

	CED %	CEDtrs %	GL days	BW kg	200 days	400 days	600 days	MCW kg	Milk kg	SC cm	DTC days	CWT kg	EMA sq.cm	RIB F mm	RUMPF mm	RBV	IMF	Doc	Claw	Foot Angle	Leg Angle
EBV	+4.5	+5.8	-5.4	+2.7	+66	+114	+145	125	18	+2.8	-5.7	+87	+11.8	-1.6	-2.8	+0.6	+4.1	+20	-	-	-
Acc	64%	56%	68%	77%	79%	78%	76%	75%	73%	73%	42%	74%	73%	70%	67%	64%	74%	65%	-	-	-
Perc	30	21	34	23	4	6	9	18	45	27	26	8	7	82	87	41	12	53	-	-	-

August 2024 TransTasman Angus Cattle Evaluation

# POWERPLANT

\$50

011AN02355

Roseda Powerplant <sup>PVPV</sup>



- ▲ Uniquely combines calving ease, high growth & marbling in an attractive package
- ▲ Top 10% growth EBVs, MCW, CW, IMF, Foot angle + Indexes

Quaker Hill Manning 4EX9  
E W A Peyton 642  
E W A 444 of 968 Progress

**Roseda Powerball23 F091**

V A R Discovery 2240  
Roseda Blackcap B103 D118  
Roseda Blackcap 0134 B103

Rito 9Q20 of Rita 5F56 GHM  
Welytok Prime Divine 6D91  
Welytok Total 10 Erianna 3B2

**Roseda Ms Flora Divine F113**

G A R Prophet  
Roseda Ms Flora Prophet B126  
Roseda Ms Flora Rito S033



### BULL INFORMATION

Registration #	USA19881320
Birthdate	13/10/2020
Genetic Testing	AMF,CAF,DDF,NHF,DWF,MAF,MHF,OHF,OSF,RGF

SELECTION INDEX	\$A	\$A-L
Index Value	\$253	\$441
Breed Average	\$200	\$344
Perc	7	3

	CED %	CEDtrs %	GL days	BW kg	200 days	400 days	600 days	MCW kg	Milk kg	SC cm	DTC days	CWT kg	EMA sq.cm	RIB F mm	RUMPF mm	RBV	IMF	Doc	Claw	Foot Angle	Leg Angle
EBV	+5.0	+2.3	+1.1	+3.3	+72	+128	+160	+137	+16	+0.9	-3.0	+85	+6.6	+1.7	+1.7	-1.4	+4.4	+19	+0.96	+0.76	+1.10
Acc	71%	55%	94%	93%	89%	86%	85%	83%	78%	81%	39%	79%	75%	73%	71%	65%	78%	73%	76%	76%	53%
Perc	26	59	99	34	1	1	2	9	55	88	84	10	47	16	18	99	9	57	73	9	72

August 2024 TransTasman Angus Cattle Evaluation

# REFORMER

\$35

011AN02348

Connealy Reformer <sup>PVPV</sup>



- ▲ High selling bull of the Fall 2021 Connealy Angus Sale
- ▲ Offers more body and mass than most calving ease sires
- ▲ Designed to sire powerful sons and big bodied, productive females

## PEDIGREE

Connealy Confidence 0100  
 Connealy Confidence Plus  
 Elbanna of Conanga 1209

### Connealy Reformed

EF Commando 1366  
 Ensa of Conanga 610  
 Emmy of Conanga 4105

Basin Payweight 006S  
 Basin Payweight 1682  
 21AR O Lass 7017

### Jaycee of Conanga 6560

Connealy Mentor 7374  
 Jaycee of Conanga 4660 096X  
 Jaze of Conanga 234



## BULL INFORMATION

Registration #	USA19991422
Birthdate	19/04/2020
Genetic Testing	AMF,CAF,DDF,NHF,DWF,MAF,MHF,OHF,OSF,RGF

## SELECTION INDEX

	\$A	\$A-L
Index Value	\$265	\$445
Breed Average	\$200	\$344
Perc	3	2

	CED %	CEDtrs %	GL days	BW kg	200 days	400 days	600 days	MCW kg	Milk kg	SC cm	DTC days	CWT kg	EMA sq.cm	RIB F mm	RUMPF mm	RBV	IMF	Doc	Claw	Foot Angle	Leg Angle
EBV	+3.5	-0.8	-6.3	+4.4	+66	+120	+140	+121	+17	+1.7	-7.3	+88	+9.1	-0.4	-2.1	+0.5	+1.6	+21	+0.62	+0.84	+0.90
Acc	61%	50%	81%	84%	85%	84%	83%	80%	77%	80%	38%	76%	74%	71%	69%	63%	77%	71%	75%	71%	56%
Perc	40	83	22	59	4	2	13	22	47	65	6	7	21	58	79	47	66	47	11	20	15

MERLEWOOD ANGUS

Reiland Ricochet R952 PVPV



- ▲ Outcross marbling genetics
- ▲ Elite carcass merit
- ▲ Phenotypic standout with moderate mature cow size
- ▲ Proven calving ease prospect

### PEDIGREE

Rennylea Edmund E11  
Kidman Impact K99  
Kidman Abigail H106

#### Reiland Nimbo N1176

Tuwharetoa Regent D145  
Strathewen Regent Wilpena J49  
Strathewen Berkley Wilpena G37

Tuwharetoa Regent D145  
Strathewen Regent E23 H70  
Strathewen Dinky-Di Mittagong E23

#### Reiland Lowen M407

G A R Solution  
Reiland Lowen E59  
Reiland Lowen B559



### BULL INFORMATION

Registration #	NLRR952
Birthdate	29/08/2020
Genetic Testing	AMF,CAF,DDF,NHF,DWF,MAF,MHF,OHF,OSF,RGF

### SELECTION INDEX

	\$A	\$A-L
Index Value	\$222	\$384
Breed Average	\$200	\$344
Perc	29	23

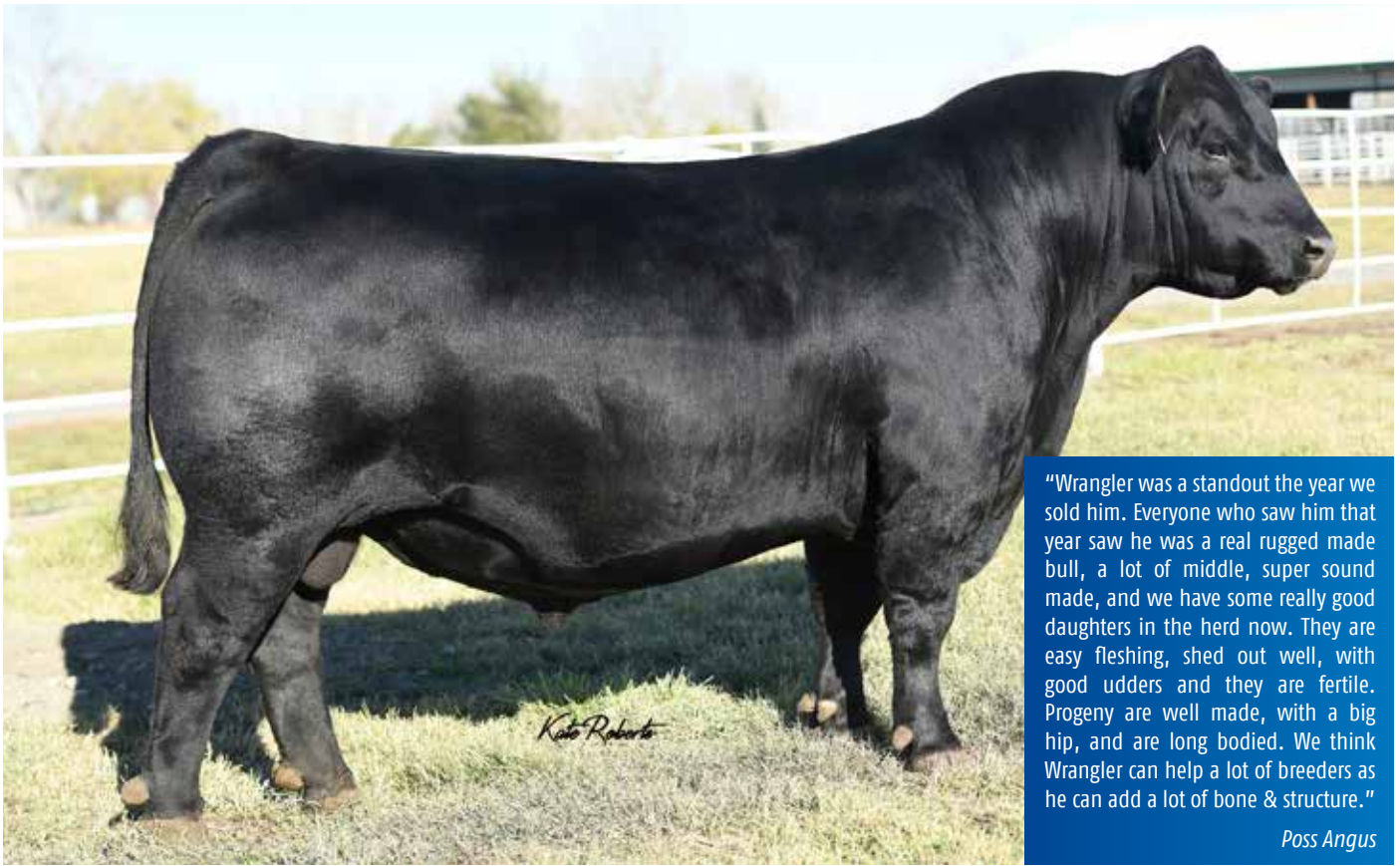
	CED %	CEDtrs %	GL days	BW kg	200 days	400 days	600 days	MCW kg	Milk kg	SC cm	DTC days	CWT kg	EMA sq.cm	RIB F mm	RUMPF mm	RBV	IMF	Doc	Claw	Foot Angle	Leg Angle
EBV	+8.9	+4.7	-6.8	+1.4	+48	+84	+106	+94	+19	+3.3	-6.9	+67	+6.5	+1.5	+2.3	-0.8	+4.4	+34	+0.72	+1.10	+1.12
Acc	72%	59%	93%	92%	86%	83%	84%	81%	76%	80%	44%	74%	71%	71%	72%	63%	76%	76%	59%	59%	57%
Perc	4	33	17	8	65	72	77	62	37	15	9	50	48	19	13	96	9	8	25	79	77

# WRANGLER

\$35

011AN01535

Poss Wrangler <sup>PVPV</sup>



- ▲ Crowd favourite at 2020 Poss Sale
- ▲ Moderate framed, muscular and powerfully built
- ▲ Sound footed with fluid movement

## PEDIGREE

Basin Payweight 0065  
 Basin Payweight 1682  
 21AR 0 Lass 7017

**Poss Maverick**

Poss Hoover Dam 2509  
 Poss Pride 5163  
 Poss Pride 9526

MCATL Triple Stack  
 Connealy Power Play  
 Boka Gena of Conanga 783

**Poss Elmaretta 648**

Connealy All Around  
 Poss Elmaretta 9104  
 Poss Elmaretta 227

## BULL INFORMATION

Registration #	USA19448649
Birthdate	08/02/2019
Genetic Testing	AMF,CAF,DDF,NHF,DWF,MAF,MHF,OHF,OSF,RGF

## SELECTION INDEX

	\$A	\$A-L
Index Value	\$231	\$396
Breed Average	\$200	\$344
Perc	20	16

	CED %	CEDtrs %	GL days	BW kg	200 days	400 days	600 days	MCW kg	Milk kg	SC cm	DTC days	CWT kg	EMA sq.cm	RIB F mm	RUMPF mm	RBV	IMF	Doc	Claw	Foot Angle	Leg Angle
EBV	-1.3	+0.1	-6.2	+4.8	+70	+118	+151	+140	+22	+2.4	-3.2	+91	+9.5	-4.0	-5.1	+0.7	+3.6	+25	+1.00	+0.88	+0.90
Acc	66%	51%	81%	87%	86%	86%	84%	81%	78%	81%	40%	77%	76%	74%	72%	67%	78%	77%	90%	89%	64%
Perc	78	78	23	68	2	3	5	8	16	39	81	5	18	99	98	35	19	32	79	28	15

# BIG VALLEY

\$50

011AN01407

Connealy Big Valley PVPV



- ▲ Will add performance and improve carcass merit
- ▲ Powerfully built sire
- ▲ More muscle, more shape, more depth

Mogck Bullseye  
Hoover No Doubt  
Miss Blackcap Ellston J2

**Connealy Dry Valley**

Summitcrest Complete 1P55  
Becca of Conanga 1617  
Brisha of Conanga 746 1237

Connealy Confidence 0100  
Connealy Greeley  
Precious of Conanga 0484

**Bunty Lay of Conanga 4930**

G A R Predestined  
Bunty Lana of Conanga 4102  
Bunty Leah of Conanga 551



**BULL INFORMATION**

Registration #	USA19249322
Birthdate	30/01/2018
Genetic Testing	AMF,CAF,DDF,NHF,DWF,MAF,MHF,OHF,OSF,RGF

SELECTION INDEX	\$A	\$A-L
Index Value	\$230	\$392
Breed Average	\$200	\$344
Perc	21	18

	CED %	CEDtrs %	GL days	BW kg	200 days	400 days	600 days	MCW kg	Milk kg	SC cm	DTC days	CWT kg	EMA sq.cm	RIB F mm	RUMPF mm	RBV	IMF	Doc	Claw	Foot Angle	Leg Angle
EBV	-5.3	+3.2	-3.2	+6.8	+72	+130	+153	+135	+11	+2.7	-3.4	+93	+7.2	-0.8	-3.3	+0.5	+2.1	+29	+1.10	+1.02	+0.82
Acc	65%	50%	90%	88%	86%	85%	84%	81%	81%	83%	38%	78%	77%	74%	71%	66%	79%	71%	95%	94%	57%
Perc	92	49	69	94	1	1	4	10	90	29	78	4	39	67	91	47	52	19	91	62	5

August 2024 TransTasman Angus Cattle Evaluation

# ZOOM

\$30

011AN02285

DL Zoom PVPV



- ▲ Big footed and stout made with exceptional structure
- ▲ A physical powerhouse with superior length, width and thickness

DL Sonic 444  
DL Dually  
DL Incentive 2103

**DL Automatic 1088**

Basin Rainmaker 747L  
DL Barbara 150  
DL Barbara 768

Connealy Consensus 7229  
DL Consensus 254  
DL Miss Winton 451

**DL Princess 1278**

DL Final Grandview 53  
DL Princess 286  
DL Princess 700



**BULL INFORMATION**

Registration #	USA19867959
Birthdate	05/01/2020
Genetic Testing	AMF,CAF,DDF,NHF,DWF,MAF,MHF,OHF,OSF,RGF

SELECTION INDEX	\$A	\$A-L
Index Value	\$280	\$487
Breed Average	\$200	\$344
Perc	1	1

	CED %	CEDtrs %	GL days	BW kg	200 days	400 days	600 days	MCW kg	Milk kg	SC cm	DTC days	CWT kg	EMA sq.cm	RIB F mm	RUMPF mm	RBV	IMF	Doc	Claw	Foot Angle	Leg Angle
EBV	-5.3	+4.7	-4.7	+7.2	+90	+146	+173	+173	+9	+1.2	-6.7	+109	+8.4	-0.7	-2.8	+0.1	+1.4	+48	+0.92	+0.78	+1.02
Acc	55%	44%	79%	83%	84%	83%	81%	78%	75%	79%	31%	74%	72%	69%	67%	60%	75%	68%	81%	82%	51%
Perc	92	33	45	96	1	1	1	1	95	81	11	1	27	65	87	71	72	1	66	11	47

August 2024 TransTasman Angus Cattle Evaluation

# PACESETTER

\$35

- ▲ Outcross pedigree and physical standout
- ▲ Offers extra length of body and deep flank
- ▲ Short gestation with growth & fertility

011AN01340

KR Pacesetter <sup>SVS</sup>



SydGen 928 Destination 5420  
Prairie Pride Next Step 2036  
Flying V Miss Pride 426

**RBM Step Ahead C80**

EXAR 263C  
Basin Charisma U691  
Basin Charisma 4866

Sitz Dash 10277  
Barstow Cash  
Barstow Queen W16

**KR Blackbird 4295**

Summitcrest DARTH 0X19  
WK Blackbird 2250  
Summitcrest Blackbird 22W1

**BULL INFORMATION**

Registration #	USA18874634
Birthdate	15/02/2017
Genetic Testing	AMF,CAF,DDF,NHF,DWF,MAF,MHF,OHF,OSF,RGF

SELECTION INDEX	\$A	\$A-L
Index Value	\$232	\$432
Breed Average	\$200	\$344
Perc	19	4

	CED %	CEDtrs %	GL days	BW kg	200 days	400 days	600 days	MCW kg	Milk kg	SC cm	DTC days	CWT kg	EMA sq.cm	RIB F mm	RUMPF mm	RBV	IMF	Doc	Claw	Foot Angle	Leg Angle
EBV	-2.0	+5.1	-7.6	+6.6	+78	+137	+169	+168	+13	+3.1	-4.5	+103	+7.1	-3.8	-5.4	+0.9	+0.6	+25	+0.98	+0.92	+0.92
Acc	64%	46%	89%	89%	87%	85%	85%	81%	78%	81%	33%	78%	75%	71%	69%	62%	78%	72%	68%	68%	54%
Perc	81	28	10	93	1	1	1	1	79	19	53	1	41	99	99	24	88	31	76	37	19

August 2024 TransTasman Angus Cattle Evaluation

# DOUBLE PLAY

\$35

- ▲ Big bodied power sire with outstanding carcass merit
- ▲ Top 5% growth EBVs, CW, Leg angle & Indexes

011AN01473

44 Double Play <sup>PVPV</sup>



Basin Payweight 006S  
Basin Payweight 1682  
21AR O Lass 7017

**TEX Playbook 5437**

Summitcrest Complete 1P55  
Rita 1C43 of 9M26 Complete  
Rita 9M26 of Rita 5F56 Pred

A A R Ten X 7008 SA  
V A R Discovery 2240  
Deer Valley Rita 0308

**Vintage Rita 5008**

Connealy Consensus 7229  
V A R Rita 3160  
Deer Valley Rita 7105

**BULL INFORMATION**

Registration #	USA19371100
Birthdate	11/10/2018
Genetic Testing	AMF,CAF,DDF,NHF,DWF,MAF,MHF,OHF,OSF,RGF

SELECTION INDEX	\$A	\$A-L
Index Value	\$258	\$440
Breed Average	\$200	\$344
Perc	5	3

	CED %	CEDtrs %	GL days	BW kg	200 days	400 days	600 days	MCW kg	Milk kg	SC cm	DTC days	CWT kg	EMA sq.cm	RIB F mm	RUMPF mm	RBV	IMF	Doc	Claw	Foot Angle	Leg Angle
EBV	-2.1	+6.1	-4.8	+5.1	+81	+133	+162	+144	+18	+2.2	-4.0	+100	+8.2	-2.7	-3.0	+0.3	+1.8	+28	+1.02	+0.86	+0.72
Acc	63%	54%	81%	83%	85%	84%	83%	80%	79%	80%	42%	76%	75%	72%	71%	65%	78%	73%	74%	74%	61%
Perc	82	19	43	74	1	1	2	6	45	47	65	2	29	94	88	59	61	21	82	24	1

August 2024 TransTasman Angus Cattle Evaluation



# QUICKSILVER \$50 (>50 STRAWS \$40)

STELLAR LIVESTOCK Stellar Quicksilver Q7 PVPV



- ▲ Superior carcass & marbling - Top 5% EMA & IMF
- ▲ Attractive sire with shape & muscling
- ▲ Pedigree stacked with excellent structural EBVs

G A R Progress  
G A R Momentum  
G A R Big Eye 1770

**Lawsons Momentous M518**

T E Mania Africa A217  
Lawsons Africa H229  
Lawsons Rocknd Ambush E1103

C R A Bextor 872 5205 608  
G A R Prophet  
G A R Objective 1885

**Stellar Vicky Prophet N9**

Sitz Upward 307R  
Aberdeen Estate Vicky G93  
KO Vicky C44



## BULL INFORMATION

Registration #	JCAQ7
Birthdate	30/07/2019
Genetic Testing	AMF,CAF,DDF,NHF,DWF,MAF,MHF,OHF,OSF,RGF

SELECTION INDEX	\$A	\$A-L
Index Value	\$241	\$375
Breed Average	\$200	\$344
Perc	13	29

	CED %	CEDtrs %	GL days	BW kg	200 days	400 days	600 days	MCW kg	Milk kg	SC cm	DTC days	CWT kg	EMA sq.cm	RIB F mm	RUMPF mm	RBV	IMF	Doc	Claw	Foot Angle	Leg Angle
EBV	-5.0	-0.2	-6.6	+4.5	+62	+108	+138	+105	+20	+1.1	-4.0	+73	+13.0	-0.7	-1.3	-0.1	+5.0	+40	+0.84	+0.76	+0.98
Acc	76%	68%	87%	89%	88%	87%	88%	84%	79%	85%	56%	79%	76%	76%	77%	70%	79%	82%	82%	82%	74%
Perc	92	80	19	62	9	11	15	45	25	84	65	34	4	65	67	80	5	3	49	9	34

August 2024 TransTasman Angus Cattle Evaluation

# PLATINUM \$40

BELLASPUR ANGUS Bellaspur Platinum P46 SVSV



- ▲ Impressive Get Cracking son, displays muscularity, big bodied, structural correctness in a moderate frame
- ▲ Dam Erica M032, stylish Westward daughter from respectable Coolana breeding herd

TE Mania Yorkshire Y437  
Te Mania Berkley B1  
TE Mania Lowan Z53

**Alloura Get Cracking G10**

C A Future Direction 5321  
Alloura Jedda Z15  
Alloura Jedda X07

G A R Predestined  
Werner Westward 357  
BFF Everelda Entese 4015

**Coolana Erica M032**

Coolana Right Time C71  
Coolana Juana Erica F232  
Coolana Juana Erica A4

## BULL INFORMATION

Registration #	GSPBP46
Birthdate	27/08/2018
Genetic Testing	AMF,CAF,DDF,NHF,DWF,MAF,MHF,OHF,OSF,RGF

SELECTION INDEX	\$A	\$A-L
Index Value	\$222	\$381
Breed Average	\$200	\$344
Perc	29	25

	CED %	CEDtrs %	GL days	BW kg	200 days	400 days	600 days	MCW kg	Milk kg	SC cm	DTC days	CWT kg	EMA sq.cm	RIB F mm	RUMPF mm	RBV	IMF	Doc	Claw	Foot Angle	Leg Angle
EBV	+0.0	+2.2	-0.5	+5.2	+50	+87	+112	+114	+10	+1.8	-7.3	+62	+7.8	+3.0	+2.8	-0.2	+3.9	+9	+0.80	+0.92	+0.98
Acc	74%	64%	92%	90%	88%	89%	88%	85%	78%	87%	54%	79%	79%	79%	80%	73%	80%	81%	70%	70%	68%
Perc	70	60	94	76	53	64	66	30	92	62	6	67	33	6	9	84	15	89	41	37	34

August 2024 TransTasman Angus Cattle Evaluation

The best way to make your cowherd truly efficient, and your calf crop earn more, is to use Leachman \$Profit™. This is the only index in the industry that works on both sides of the ledger (production AND cost). **Cows that work! Steers that pay!**

## How \$Profit works

\$Profit assumes that the average commercial bull will have 100 progeny over its lifetime. The model assumes that you keep 30% of your heifers as replacements and that you retain ownership on the remainder of the calves through finishing and sell on a grid. We realize that many don't retain ownership, but doesn't it make the most sense to select from birth all the way to slaughter? Feedlots have already proven their willingness to pay premiums for superior Leachman sired calves.



Our simulation model then factors in all of the effects on both income and expense to come up with a net profit figure for each bull. \$Profit allows you to compare any two bulls and calculate the difference in profit that they are expected to generate in your herd. Let's compare a

\$10,000 \$Profit bull to \$6,000 \$Profit bull (the average 2008 born Angus bull). The predicted difference between the bulls is \$4,000 or about \$40 per calf. \$Profit works for us and it will work for you too.

## What traits are included in \$Profit

\$Profit includes nearly every trait that impacts profitability. The effect of most traits on profit is fairly simple to understand. Here is the list of what is included and its effect:

### Revenue Traits

- Calving ease = more calves
- Weaning and yearling EPD = more weight
- Fertility (days to conception) = more weight and more calves
- Carcass weight = worth more up to 1050 lbs.
- Marbling = valued based on grid premiums
- Ribeye area = value as impacts yield grade
- % Retail Product = more yield is more meat

### Cost Traits

- Cow mature size = in general bigger eats more
- Cow intake = more intake costs more
- Feedlot feed efficiency = cost of gain

Some traits are not so easily characterized for \$Profit. Milk, for example, is a good thing until you get too much. When over +25, milk EPD has a more negative effect on fertility than it has a positive effect on weaning weight. There are a few traits not yet included in \$Profit: longevity, structure, and disposition. These traits are important but difficult to express in dollars.

## Leachman financial indexes allow you to HAVE IT ALL!

### \$Ranch

Profit from birth through weaning.  
Includes:

- Fertility, Milk, Growth
- Cow feed intake and mature size

### \$Feeder

Profit from weaning to harvest.  
Includes:

- Feed conversion
- Carcass value
- Carcass weight

### \$Profit

**Puts it all together: \$Ranch + \$Feeder**  
**One number that predicts your bottom line!**

### \$INDEXES EXPLAINED

	Good	Better	Best
% Rank	Average	Top 25%	Top 1%
\$Profit	\$8,817	\$14,173	\$27,300
\$Ranch	\$39	\$78	\$173
\$Feeder	\$68	\$105	\$195

## Across Breed Comparisons (ABC's)

Leachman ABC's are the most reliable and comprehensive EPD's in the industry. They are backed by nearly a million, long-standing (over 30 years), multi-breed (over 15 breeds) database. Using this system assures you of making sound breeding decisions with minimal risk of failure.

	Good	Better	Best
% Rank	Average	Top 25%	Top 1%
BW	1.93	0.37	-3.4
WW	40	48	69
YW	67	82	119
MILK	22	26	37
SC	0.53	0.77	1.37
HT	0.62	0.82	1.30
MAT WT	28	14	-21
REA	0.83	0.96	1.27
IMF	0.30	0.46	0.87
CAR WT	44	48	58
BF	-0.04	-0.02	0.01
PAP	-0.42	-0.94	-2.23

# REAL DEAL

**\$50**  
(>50 STRAWS \$40)

WOORINYAN PASTORAL COMPANY Paringa Real Deal T57 <sup>SV</sup>



- ▲ The HIGHEST \$Profit/\$Ranch Index combination Angus bull globally (\$Profit \$33,211)
- ▲ Only Angus sire with performance of 10 generations of 6.5 calves at 365 days

Koupals B&B Identity  
Mill Brae Identified 4031  
Mill Brae Pro Blackcap 1092

**NEW**

**H P C A Veracious**

G A R Sunrise  
H P C A Sunrise A246  
H P C A Prophet A3

Sydgen C C & 7  
T C A Visionary 158  
T C A Treasure 0699 601

**Paringa Visionary N78**

Lawsons Invincible C402  
Larnoo Invincible G819  
Lawsons Fair Dinkum C429



**BULL INFORMATION**

Registration #	HKF22T57
Birthdate	03/08/2022
Genetic Testing	AMFU,CAFU,DDFU,NHFU

SELECTION INDEX	\$A	\$A-L
Index Value	\$276	\$442
Breed Average	\$200	\$344
Perc	2	2

	CED %	CEDtrs %	GL days	BW kg	200 days	400 days	600 days	MCW kg	Milk kg	SC cm	DTC days	CWT kg	EMA sq.cm	RIB F mm	RUMPF mm	RBV	IMF	Doc	Claw	Foot Angle	Leg Angle
EBV	+5.9	-1.2	-2.2	+4.8	+63	+106	+146	+118	+24	+0.5	-6.0	+97	+14.2	-2.8	-5.2	+1.8	+2.7	+42	+0.68	+1.12	+1.16
Acc	66%	55%	83%	83%	84%	82%	82%	79%	74%	80%	42%	71%	71%	71%	71%	63%	75%	76%	74%	70%	65%
Perc	19	85	82	68	7	14	7	26	10	94	20	2	2	95	98	3	37	2	18	82	85

August 2024 TransTasman Angus Cattle Evaluation

# TITAN

**\$60**

RISSINGTON CATTLE COMPANY Rissington Titan T330 <sup>PV</sup>

Titan at 12 months of age



- ▲ Rose to the very top of 2022 Calf Drop on Leachman Global Analysis with \$Profit of \$35,007 (top 1%) & \$Feeder of \$309 (top 1%) which predicts weaning to harvest performance

- ▲ Unique carcass data: +11.4 EMA & +6.1 IMF

G A R Sure Fire 6404  
GB Fireball 672  
GB Anticipation 432

**Rissington Meteor R321**

Rissington 135262  
Ellerton C90  
Ellerton 135068

G A R Progress  
Leachman Foundation G081D  
TCR Ever Focus XG071

**Ellerton 190379**

Rissington 121001  
Ellerton 140547  
Ellerton 110190



**BULL INFORMATION**

Registration #	BGB22T330
Birthdate	23/09/2022
Genetic Testing	AMF,CAF,DDF,NHF,DWF,MAF,MHF,OHF,OSF,RGF

SELECTION INDEX	\$A	\$A-L
Index Value	\$235	\$384
Breed Average	\$200	\$344
Perc	17	23

	CED %	CEDtrs %	GL days	BW kg	200 days	400 days	600 days	MCW kg	Milk kg	SC cm	DTC days	CWT kg	EMA sq.cm	RIB F mm	RUMPF mm	RBV	IMF	Doc	Claw	Foot Angle	Leg Angle
EBV	+4.2	+4.7	-1.6	+2.6	+50	+86	+117	+106	+21	+2.0	-3.5	+73	+11.4	-3.2	-4.4	+1.4	+6.1	+6	+0.86	+0.82	+0.92
Acc	64%	53%	81%	81%	82%	80%	80%	76%	73%	77%	38%	68%	68%	68%	69%	59%	73%	73%	64%	64%	59%
Perc	33	33	87	21	52	67	55	43	20	54	76	33	8	97	96	8	1	95	54	17	19

August 2024 TransTasman Angus Cattle Evaluation

# COOTA PARK BLUE-E PROGRAM

## Coota Park Blue-E Q008 PP

**\$Profit \$24,546**

- Top 2%** \$Profit
- Top 8%** Birthweight
- Top 19%** Growth
- Top 25%** Fat
- Top 1%** Rib Eye Area
- Top 1%** Feed Efficiency

- Homozygous black bull with impressive performance
- Top of the range conversion and reduced emissions genetics
- Modern genetics to secure our future
- Short gestation - Top 4%



## Coota Park Blue-E Q070 PP

**\$Profit \$28,966**

- Top 1%** \$Profit
- Top 1%** Birthweight
- Top 31%** Growth
- Top 25%** Fat
- Top 5%** Rib Eye Area
- Top 1%** Feed Efficiency
- Top 22%** Marbling

- Popular red genetics
- A bull designed for the dairy or beef program - doing everything we want
- Conversion efficiency and low methane genetics - a bull to move us forward
- Short gestation - Top 2%



# JUDICIAL

**NEW**

STABILIZER

LEACHMAN CATTLE Leachman Judicial S998J



- ▲ Calving ease sire that ticks all the boxes
- ▲ Greater than top 1% in all indexes
- ▲ Top 1% BW, IMF & REA
- ▲ Homozygous Black and Homozygous Polled

Leachman Yosemite X730Y

**Leachman Doc X124B**

TES Stabilizer TL089

Leachman Judge X228C

**RGR Stabilizer GU375**

RGR Stabilizer CJ982

BULL INFORMATION				\$PROFIT		\$36,977 <i>Top 1%</i>		INDEX		RATING		INDEX		RATING								
Registration #	N/A			<b>\$Ranch</b>		\$189.88 <i>Top 1%</i>		Calving Ease	★★★★★		Udder	★★★★★										
Birthdate	02/20/2021			<b>\$Feeder</b>		\$250.89 <i>Top 1%</i>		Maternal	★★★★★		Growth	★★★★★										
								Fertility	★★★★★		Carcass	★★★★★										
PERFORMANCE				MATERNAL				CARCASS				MANAGEMENT										
	BW	WW	YW	MCE	GL	MILK	MWT	FERT	DOC	CW	BF	REA	IMF	FG	INTAKE	HT	PAP	BS	TS	TUC	TM	SC
EPD	-4.2	+48	+90	+12	-2.5	+27	-10	+3.15	-.03	+52.54	-.01	+1.44	+9.2	-.11	+25	-.05	+89	-.20	+27	+1.76	+51	+62
Perc	1%	28%	16%	3%	1%	Ave 21	Ave 25	1%	71%	6%	11%	1%	1%	11%	46%	Ave .62	95%	95%	25%			40%

August 8, 2024 ABC's (see page 18)

# KICKOFF

**NEW**

LEACHMAN CATTLE Leachman Kickoff S479K



- ▲ Top 1% \$Profit & \$Feeder
- ▲ Top 1% BW, IMF & CW
- ▲ Homozygous Black and Homozygous Polled

G A R Ashland

**HPCA Vercingetorix**

H P C A Sure Fire P245

LCOC Advance U319E

**LAM Stabilizer HU069**

LAM Stabilizer YL037

BULL INFORMATION				\$PROFIT		\$31,676 <i>Top 1%</i>		INDEX		RATING		INDEX		RATING								
Registration #	4207562			<b>\$Ranch</b>		\$108.93 <i>Top 12%</i>		Calving Ease	★★★★★		Udder	★★★★★										
Birthdate	01/08/2022			<b>\$Feeder</b>		\$290.72 <i>Top 1%</i>		Maternal	★★★★★		Growth	★★★★★										
								Fertility	★★★★★		Carcass	★★★★★										
PERFORMANCE				MATERNAL				CARCASS				MANAGEMENT										
	BW	WW	YW	MCE	GL	MILK	MWT	FERT	DOC	CW	BF	REA	IMF	FG	INTAKE	HT	PAP	BS	TS	TUC	TM	SC
EPD	-5.1	+51	+110	+12	-3.5	+32	+37	+2.11	-.11	+67.90	+0.01	+1.03	+1.16	-.17	+103	+51	-2.50	+0.17	+41	+362	+58	+74
Perc	1%	20%	3%	3%	1%	Ave 21	Ave 25	16%	99%	1%	1%	13%	1%	4%	97%	Ave .62	1%	25%	6%			28%

August 8, 2024 ABC's (see page 18)

PERFORMANCE				MATERNAL				CARCASS				INDEX						
	CE	BW	WW	YW	ADG	MCE	MILK	MWW	STAY	DOC	CW	YG	MRB	BF	REA	SHR	API	TI
EPD	+21.4	-5.8	+64.3	+104.5	+0.25	+13.0	+26.9	+59.1	+9.7	+13.0	+37.7	-.08	+0.67	+0.001	+0.63	-	+153.7	+87.2
Acc	.27	.44	.22	.21	.21	.17	.10	.11	.10	.14	.16	.14	.16	.15	.15	-	-	-
Perc	1	1	90	80	60	1	30	65	95	70	45	35	90	15	95	60	20	20

July 30, 2024 American Simmental Association

# Bieber PAYCHECK K102 011AR03100

Reg # 4620417  
Birthdate 10/01/2022



- ▲ High selling bull of 2023 Bieber Red Angus Bull Sale
- ▲ The whole package – outstanding calving ease, growth & carcass traits

WFL Frankly F8276

Larr Paycheck 0728

Larr Miss CC Flower 7528

Bieber CL Stockmarket E119

Bieber Primrose 139H

Bieber Primrose 204E



**\$60**

	INDEX			PERFORMANCE						MATERNAL					CARCASS				
	PRO\$	HB	GM	CE	BW	WW	YW	ADG	DMI	MM	ME	HPG	CEM	STAY	MARB	YG	CW	REA	BF
EPD	+141	+43	+99	+18	-3.1	+104	+172	+43	+1.79	+32	+27	+11	+11	+14	+1.09	+0.08	+41	+5.9	+0.05
Acc	-	-	-	44	49	49	49	49	32	15	11	8	22	31	38	31	40	37	32
Perc	7	74	1	3	26	1	1	1	94	7	99	54	3	60	1	61	5	2	98

August 6, 2024 Red Angus Association of America

# C-Bar WHISKEY RIVER 8105F 011AR03079

Reg # 4045146  
Birthdate 11/01/2018



- ▲ High performance sire who is a phenotypic standout
- ▲ Featured & high selling bull at 2019 C-Bar Ranch
- ▲ High growth & muscle

BUF CRK The Right Kind U199

Pie One of a Kind 352

Pie Fayette 1160

C-Bar Contour 107X

Jeffries MS Joline 2243

Brown MS Big Sky U7877

**\$50**

	INDEX			PERFORMANCE						MATERNAL					CARCASS				
	PRO\$	HB	GM	CE	BW	WW	YW	ADG	DMI	MM	ME	HPG	CEM	STAY	MARB	YG	CW	REA	BF
EPD	+62	+5	+57	+10	-.3	+84	+130	+29	+1.15	+29	+13	+11	+6	+8	+4.8	-.04	+33	+5.0	+0.01
Acc	-	-	-	48	52	51	51	51	32	28	16	33	33	41	43	36	44	44	38
Perc	88	97	36	84	73	7	12	27	77	26	89	63	67	96	39	12	26	9	32

August 6, 2024 Red Angus Association of America

# Mushrush TOPPER 011AR03067

Reg # 3525067  
Birthdate 06/02/2018



- ▲ Go-to bull for next program
- ▲ Proven maternal line producing global success
- ▲ Very correct phenotypically

Beckton Clifftop W692 E3

Beckton Clifftop Z500 E4

Beckton Tamara R291 EP

BUF CRK Lancer R017

Mushrush Lana 84S A033

Mushrush Lana IM W203

**\$40**

	INDEX			PERFORMANCE						MATERNAL					CARCASS				
	PRO\$	HB	GM	CE	BW	WW	YW	ADG	DMI	MM	ME	HPG	CEM	STAY	MARB	YG	CW	REA	BF
EPD	+20	-10	+30	+15	-2.5	+81	+133	+32	+1.04	+28	+13	+4	+9	+8	+0.08	+0.17	+38	+0.06	+0.03
Acc	-	-	-	53	58	54	56	56	33	31	24	27	35	38	41	35	47	42	35
Perc	99	99	78	25	36	10	10	12	69	33	90	99	25	97	96	85	16	60	64

August 6, 2024 Red Angus Association of America

# NOCKOUT

\$40

TARCOMBE HEREFORDS Tarcombe Nockout R064



- ▲ Calving ease sire
- ▲ Add growth & carcass quality to any program
- ▲ Homozygous polled

Wirruna Hartwig H297  
Wirruna Kalinma K326  
Wirruna Cora H303

**Yavenvale Nockout N312**

Minlacowie Griffin  
Yavenvale Corisande L385  
Yavenvale Corisande H143

Elite 4110 H297  
Banemore Elite M102 AI  
Banemore Summer Day A009

**Banemore Last Day P084**

Banemore Echucah16  
Banemore LasdayL14 AI  
Banemore Last Day D76

BULL INFORMATION	
Reg #	THSR064
Birthdate	05/04/2020
Genetic Testing	IEF DLF HYF MSUDF BVDVNeg

SELECTION INDEX	Southern Self-Replacing Index (\$)	Northern Self-Replacing Index (\$)	Southern Baldy Maternal Index (\$)	Northern Baldy Maternal Index (\$)
Index Value	\$235	\$215	\$237	\$164
Breed Average	\$143	\$130	\$146	\$107

	CED %	CEDtrs %	GL days	BW kg	200 days	400 days	600 days	MCW kg	Milk kg	SS cm	DTC days	CWT kg	EMA sq.cm	RIB F mm	RUMPF mm	RBV %	IMF %	D
EBV	+5.6	+5.2	-1.1	+4.3	+47	+82	+112	+70	+25	+4.9	-5.1	+74	+3.9	+1.4	+2.2	+4	+1.9	-
Acc	64%	46%	70%	90%	84%	81%	80%	72%	61%	83%	44%	68%	59%	64%	69%	61%	67%	-

July 2024 Hereford BREEDPLAN

# PIONEER

\$40

011HP01040 TH 745A 358C Pioneer 297F



- ▲ Complete package of CE, growth & carcass
- ▲ Well balanced, heavy muscled with sound structure
- ▲ Outcross pedigree

TH 223 711 Victor 755T  
TH 89T 755T Stockman 475Z  
TH 16G 20N Gemini 89T

**TH 403A 475Z Pioneer 358C ET**

TH 22R 16S Lambeau 17Y  
TH 71U 17Y Rita 403A  
TH 7N 45P Rita 71U

SHF Rib Eye M326 R117  
Boyd Worldwide 9050 ET  
MSU TCF Rachael 22S ET

**Rangeline 11Y Miss World 745A**

TH 122 711 Victor 719T  
Rangeline 60S Tear Drop 11Y  
Rangeline 4G Tear Drop 60S

BULL INFORMATION	
Reg #	OSA43920548AHR
Birthdate	17/03/2018
Genetic Testing	IEF DLF HYF MSUDF

SELECTION INDEX	Southern Self-Replacing Index (\$)	Northern Self-Replacing Index (\$)	Southern Baldy Maternal Index (\$)	Northern Baldy Maternal Index (\$)
Index Value	\$153	\$147	\$157	\$112
Breed Average	\$143	\$130	\$146	\$107

	CED %	CEDtrs %	GL days	BW kg	200 days	400 days	600 days	MCW kg	Milk kg	SS cm	DTC days	CWT kg	EMA sq.cm	RIB F mm	RUMPF mm	RBV %	IMF %	D
EBV	+4.8	-	-2.4	+2.0	+37	+59	+75	+51	+17	+2.5	-4.0	+49	+5.0	+2.2	+2.2	+4	+3	-
Acc	27%	-%	59%	79%	81%	80%	77%	74%	75%	76%	32%	69%	59%	67%	61%	48%	63%	-

July 2024 Hereford BREEDPLAN

# RUBEN

\$35

- ▲ Homozygous polled
- ▲ Outcross fullblood genetics

011SM02075 Grinalta's HP Ruben FF904H



## BULL INFORMATION

Reg # 4207292  
 Birthdate 4/14/2020

Grinalta's Superb DP106R  
 Grinalta's HP Ultra FF940  
 Grinalta's POL Morene

**Grinalta's HP Heinz - FF962E**  
 Grinalta's POLD Improver  
 Brinalta's Avis-DPFF162X  
 Grinalta's Cherry PFF81S

Mackenzie's Cane 122Y  
 Big Hills Cane 62B  
 Eagle-Ridge Zabia

**Grinalta's Lotta PFFF04D**  
 Beech Bros Xander 943X  
 Grinalta's Angel DPFF4A  
 Wyvern Super Lady PFF 4Y

	PERFORMANCE					MATERNAL					CARCASS					INDEX		
	CE	BW	WW	YW	ADG	MCE	MILK	MWW	STAY	DOC	CW	YG	MRB	BF	REA	SHR	API	TI
EPD	+8.6	+3.4	+67.1	+86.3	+1.12	+1.3	+30.8	+64.2	+16.0	+7.7	+15.4	-.55	-.03	-.117	+88	-	+109.2	+66.0
Acc	.18	.20	.18	.18	.18	.10	.08	.12	.14	.15	.16	.13	.14	.13	.15	-	-	-
Perc	20	25	70	80	90	75	80	80	25	70	60	60	30	80	45	-	15	45

July 30, 2024 American Simmental Association

# BLAZE

\$45

- ▲ Standout polled fullblood
- ▲ Bloodlines go back to the renowned Bar 5 genetics
- ▲ Exceptional depth of body & rib
- ▲ Utilised Australia wide

011SM02036 SFJ Alta's Blaze 102Y



## BULL INFORMATION

Reg # 2819676  
 Birthdate 10/02/2011

Takar  
 Sleepy Hollow Blaze  
 Anchor T Ingrid 9A

**Bar 5 Blaze 802J**  
 Bar 5 Prestige 681T  
 Bar 5 Precious 405Z  
 Bar 5S 407L Exclusive

DFM Marcus 14M  
 Saugeen Scorpion 31S  
 Hemr Martina 1M

**Saugeen Miss Elmer 101U**  
 SU Painter 59P  
 Saugeen Satin 95S  
 Bar 5 Satin Lady 402G

	PERFORMANCE					MATERNAL					CARCASS					INDEX		
	CE	BW	WW	YW	ADG	MCE	MILK	MWW	STAY	DOC	CW	YG	MRB	BF	REA	SHR	API	TI
EPD	+9.0	+2.3	+68.9	+89.2	+1.13	+4.4	+30.9	+65.3	+12.7	+4.5	+16.9	-.54	-.16	-.111	+91	-	+98.8	+65.3
Acc	.48	.58	.46	.45	.45	.21	.18	.28	.27	.32	.36	.28	.29	.25	.36	-	-	-
Perc	20	10	60	70	85	30	80	75	75	90	50	65	85	80	35	-	50	50

July 30, 2024 American Simmental Association



# JOKER

\$35

- ▲ Purebred Simmental
- ▲ Balanced trait sire across the board
- ▲ Big time carcass sire with top 1% MARB & top 10% REA

011SM02069

Hook's Joker 8J



## BULL INFORMATION

Reg # 3866465  
Birthdate 15/02/2021

TJ Main Event 503B  
CDI Mainline 265D  
Hook's Beyonce 82B

### Hook's Frontline 40F

Hooks Shear Force 38K  
Hook's Carina 15C  
Hook's Yearn 39Y

Hooks Shear Force 38K  
Hook's Beacon 56B  
Hooks Zafirah 41Z

### Hook's Evita 18E

Hooks Titus 31T  
Hook's Yuma 49Y  
Hook's Universal 17U

	PERFORMANCE					MATERNAL					CARCASS					INDEX		
	CE	BW	WW	YW	ADG	MCE	MILK	MWW	STAY	DOC	CW	YG	MRB	BF	REA	SHR	API	TI
EPD	+15.8	-.7	+83.8	+130.3	+.29	+11.7	+35.8	+77.6	+23.1	+13.2	+36.9	-.39	+.78	-.061	+1.11	-.42	+194.4	+103.5
Acc	.48	.52	.53	.54	.54	.33	.29	.36	.39	.51	.47	.39	.46	.42	.46	.07	-	-
Perc	10	20	30	25	25	1	1	3	1	35	20	55	1	70	10	-	1	2

July 30, 2024 American Simmental Association

# LODESTAR

\$35

- ▲ 1/2 SM x 1/2 AN
- ▲ Featured and high selling bull at Irvine Ranch
- ▲ Big time spread bull offering CE & exceptional performance
- ▲ Homozygous polled & black

011SM02068

IR Lodestar H380



## BULL INFORMATION

Registration # 3839823  
Birthdate 09/10/2020

GW Predestined 701T  
GW Step Out 672X  
GW Miss Lucky Charm 832P

### Redhill 672X X004 231A

GW Premium Beef 021TS  
GW Miss Prem Beef X004  
GW Miss Quarter 538U

Hooks Shear Force 38K  
Hook's Beacon 56B  
Hooks Zafirah 41Z

### IR Ms Lucy E711

G A R Prophet5  
EXAR Lucy 5643  
EXAR Lucy 0901

	PERFORMANCE					MATERNAL					CARCASS					INDEX		
	CE	BW	WW	YW	ADG	MCE	MILK	MWW	STAY	DOC	CW	YG	MRB	BF	REA	SHR	API	TI
EPD	+18.0	-4.9	+85.9	+132.1	+.29	+12.5	+25.5	+69.3	+17.0	+10.3	+42.0	-.17	+1.14	+0.005	+1.0	-.35	+200.4	+112.5
Acc	.60	.74	.70	.67	.67	.33	.24	.36	.39	.60	.50	.39	.53	.42	.48	.05	-	-
Perc	10	3	20	25	35	2	40	20	25	80	25	70	1	95	10	-	1	1

July 30, 2024 American Simmental Association

# SILVER HAND \$25

011CH01040 DCR MR Silver Hand F564



## BULL INFORMATION

Reg #	M917050
Birthdate	13/04/2018

- ▲ Modest BW with strong performance describes this Silver Gun son
- ▲ Outstanding carcass merit with CW, REA, MARB & TSI in top 10%
- ▲ Commercial use only

LT Silver Distance 5342P  
 IQCR Silver Gun Y31P  
 IQCR MS Gunsmoke Char 6014P

### WCF MR Silver Gun 467

WCF MR Fasttrack 711  
 WCF Miss Fasttrack 012  
 WCF MS Edge 8111

JCH MR 402 Pro U148  
 DCR MR U148 Ranch Hand Z196PLD  
 JCH MS No Bull W24

### DCR MS Ranch Hand B261

WF Magic Man 742 PLD  
 DCR MS Magic X379  
 JCH MS Gain & Grade S198

	CED	BW	WW	YW	MILK	MCE	MTL	SC	UDDR	TEAT	CW	REA	FAT	MARB	TSI
EPD	+11.0	-2.6	+75	+139	+22	+8.8	+60	+1.5	+1.23	+1.25	+44	+1.16	+.027	+35	+287.97
Acc	.35	.60	.47	.47	.23	.22	.31	.35	.26	.25	.20	.20	.18	.15	
Perc	50	25	15	8	60	55	30	15	25	15	2	2	90	3	5

AICA August 2024

# LOW RIDER \$30

011CH01027 Cedarlea Low Rider 105F



## BULL INFORMATION

Registration #	PMC744233
Birthdate	06/02/2018

- ▲ Calving ease sire with strong maternal traits
- ▲ Moderate framed individual with muscle & mass
- ▲ Polled purebred

LT Bluegrass 4017 P  
 LT Ledger 0332P  
 LT Brenda 6120 PLD

### Circle Cee Legend 307A

D R Revelation 467  
 Circle Cee Stunning 125Y  
 HFCC White Promise 34E

KAYR Grid Iron 400S  
 CSS Sir Gridmaker 2W  
 CSS Lady Red Navigator 1T

### Cedarlea Yoshi 71Y

FFBB Roper PLD 5106R  
 Cedarlea Ubee A Roper 66U  
 Cedarlea PSSST 13P

	CED	BW	WW	YW	MILK	MCE	MTL	SC	UDDR	TEAT	CW	REA	FAT	MARB	TSI
EPD	+10.7	-4.9	+38	+71	+28	+5.2	+47	+.8	+1.25	+1.21	+9	+.85	+.045	+.01	+218.99
Acc	.49	.71	.48	.43	.28	.30	.35	.19	.08	.08	.17	.15	.12	.11	
Perc	50	6	100	100	30	85	80	70	20	20	80	20	100	75	100

AICA August 2024

# VENTURE

\$50

- ▲ Strong maternal line out of a proven dam
- ▲ Use Venture for feet improvement, excellent temperament & body type

011CH01028 IT Venture 3198



LT Western Spur 2061 PLD  
 LT Western Edge 4057 Pld  
 LT Duchess of Mac 7076 P

**IT Stagecoach 8068 Pld**

LT Wyoming Wind 4020 PLD  
 LT Lady Macbeth 2131 Pl  
 LT Lady Macbeth 8413 ETP

LT Unlimited Ease 9108  
 LT Easy Pro 1158 Pld  
 LT Lady Macbeth 8413 ETP

**IT Ballet 9219 Polled**

Eatons Leader 2233 P  
 LT Ballet 6233  
 LT Ballet 0024 PLD



### BULL INFORMATION

Reg #	OAUJ5612E
Birthdate	11/03/2013

SELECTION INDEX	Domestic Terminal Index (\$)	Northern Maternal Index (\$)
Index Value	\$33	\$94
Breed Average	\$23	\$36

	CED	CE Dtrs	GL	BW	200D	400D	600D	MCW	Milk	SS	CW	EMA	Rib	Rump	RBY %	IMF %
EBV	+7.6	+2.8	-2.9	-4.2	+12	+37	+47	+25	+23	+2.8	+37	+1.0	+3.8	+4.9	-3.3	+5
Acc	91%	83%	98%	98%	96%	96%	95%	92%	94%	95%	88%	82%	90%	89%	83%	81%

June 2024 Australasian Charolais Single-Step BREEDPLAN

# BOOTLEGGER

\$30

- ▲ Calving ease sire
- ▲ Will increase marbling
- ▲ Use Bootlegger to improve udder quality & functionality

011CH01046 Cedarlea Low Rider 105F



LT Silver Distance 5342P  
 LT Long Distance 9001 PLD  
 LT Belle 7026 P

**WC Bootlegger 4017 P**

LT Blue Value 7903 ET  
 WC Rita 1534 P  
 Miss RCB Rita R017

LT Bluegrass 4017 P  
 LT Ledger 0332 P  
 LT Brenda 6120 PLD

**Mead Lady P280**

M6 Grid Maker 104 PET  
 Mead Lady I084  
 Orr's MS Impressive Twin

### BULL INFORMATION

Registration #	M938055
Birthdate	3/2/2019

	CED	BW	WW	YW	MILK	MCE	MTL	SC	UDDR	TEAT	CW	REA	FAT	MARB	TSI
EPD	+18.1	-4.9	+56	+103	+31	+6.8	+59	+1.4	+1.23	+1.28	+9	+4.7	+0.054	+0.29	+252.35
Acc	.28	.41	.25	.24	.21	.20	.22	.20	.18	.17	.16	.16	.15	.14	
Perc	5	6	70	65	20	70	35	20	25	9	80	75	100	8	55

AICA August 2024

## ZIP LINE

\$40

011BN01067

Sankeys Zip Line 392J2



## BULL INFORMATION

Registration #	R10474762
Birthdate	4/12/2021

	CED	BW	VVW	YW	MILK	TM	CEM	SC	REA	IMF	FAT	HEIF PREG	STAY	COW WT	TERM INDEX	FERD INDEX
EPD	+6.1	-.3	+32	+63	+1	+17	+2.89	+1.08	+4.7	+1.12	+0.003	+6.81	+1.64	+6.18	+3.15	+2.91
Acc	.36	.46	.42	.31	.28	-	.27	.35	.36	.43	.37	.22	.12	.22	-	-
% Rank	40	35	20	15	>95	65	75	10	15	40	50	15	55	80	20	75

July 2024, International Brangus Breeders Association

- ▲ Attractive sire with shape & muscling
- ▲ Calving ease with strong growth & carcass traits
- ▲ Great multipurpose breeding option

NEW

## Suhn's Business Line 30D26

MC Onstar 924W4  
VF-Oaks Online 918Y3  
Vorel MS Affirmed 918U4

CRC North Star 9U8W3  
Suhn's Miss North Star 30A  
Suhn's Miss Patton 30X5

MC Revelation 129T  
CB Final Cut 924X  
RBM MS Guns 924T3

## Snakeys Promise 392A

Decade of Brinks 209K26  
Sankeys MS PC Decade 392S3  
MS PC Tropper 392P

## COLISEUM

\$30

011SE01615

SNV Coliseum 3115A ET



## BULL INFORMATION

Registration #	1301923
Birthdate	26/10/2013

	BW	VVW	YW	MILK	MAT M&G
EPD	+2.4	+14	+18	+20	+27
Acc	.64	.42	.14	.16	-

Senepol Cattle Breeders Association July 2024

- ▲ Excels on confirmation & soundness
- ▲ Very balanced numbers, consistent on growth with strong maternal features
- ▲ Excellent opportunity for an outcross pedigree with good numbers

## CN 811R

CN 6013D  
CN 6747J  
CN 6047D

CN 6544H  
CN 138K  
CN 6221H

WC 947B  
PRR 9205J  
WC 5813

## PRR 4092P

ASL Big Ed HU47  
CRSC 69E ET  
ASL Queen 156U ET

# RAPTOR

\$35

- ▲ Excellent structure & docility
- ▲ Great calving ease, short gestation, curve bending growth
- ▲ High demand sire

BLUE SPARK SPECKLE PARK Blue Spark Raptor



Rednect Wild Willy 2W  
Semex Alliance Yogi Goes Rednect  
Aspen Acres Linda Lou 10L

**Johner Stock Farm Trade Secret**

River Hill Show Biz 93S  
Monnery River 7W  
Monnery River 7P

Codiak Crikey GNK 13U  
Codiak Eagle GNK 46Y  
Codiak Nice Lady RKW 25N

**Blule Spark H9 Exquisite P03**

Spknz Extreme E27  
Blue Spark Exquisite H09  
Bunderra 68L Star Bank D5

BULL INFORMATION		SELECTION INDEX	Domestic Maternal Index	Domestic terminal index	Export maternal index	Export terminal index
Reg #	BSP R01	Index Value	\$49	\$34	\$62	\$39
Birthdate	15/02/2020	Breed Average	\$7	\$18	\$22	\$29

	GL	BW	200D	400D	600D	MCW	Milk	SS	CW	EMA	Rib	Rump	RBV %	IMF %
EBV	-3.6	+3	+23	+38	+39	+37	+1	+8	+27	0.0	+6	+7	-6	+2
Acc	61%	73%	70%	67%	65%	56%	56%	67%	56%	47%	56%	55%	52%	52%

July 2024 Speckle Park Single-Step BREEDPLAN

# PLAYER

\$30

- ▲ Moderate birth weight with a big time growth spread
- ▲ Clean fronted bull with plenty of depth and style
- ▲ Pedigree stacked with performance

WATTLE GROVE SPECKLE PARK Wattle Grove Player P201



River Hill Skipper 6S  
Zoro Matters 1Z  
Spots 'N Sprouts 1T

**Avery Creek Banjo 01B**

Codiak Willy 15W  
Tumbleweed Acres Lulu 18Y  
Tumbleweed Acres Chinook 12U

Star Bank Lacerta 68L  
Wattle Grove Almighty E41  
Wildwood Kara 4K

**Wattle Grove E41 Stardust J33**

Prairie Hill John Wayne 50S  
Wattle Grove Star Dust E2  
Codiak RKW 07J

BULL INFORMATION		SELECTION INDEX	Domestic Maternal Index	Domestic terminal index	Export maternal index	Export terminal index
Reg #	WGS P201	Index Value	-\$12	\$19	\$1	\$36
Birthdate	21/05/2018	Breed Average	\$7	\$18	\$22	\$29

	GL	BW	200D	400D	600D	MCW	Milk	SS	CW	EMA	Rib	Rump	RBV %	IMF %
EBV	+1.4	+3.7	+25	+33	+46	+51	+6	-.3	+25	-.2	-.6	-.9	-.1	+3
Acc	65%	87%	84%	81%	79%	64%	52%	66%	69%	50%	65%	64%	60%	58%

July 2024 Speckle Park Single-Step BREEDPLAN

# MAXIMIZE YOUR HERD'S POTENTIAL WITH SYNCHRONISATION

## NHIA BEEF CATTLE PROTOCOLS

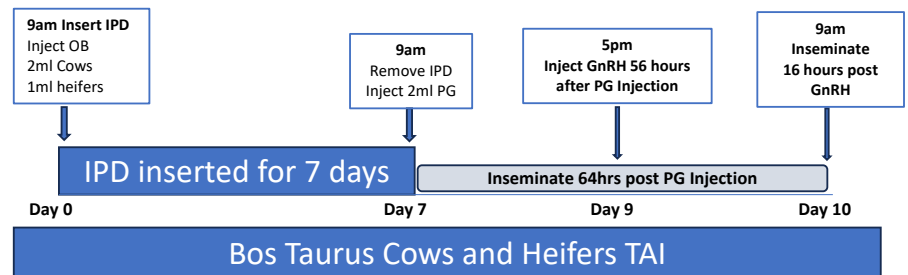
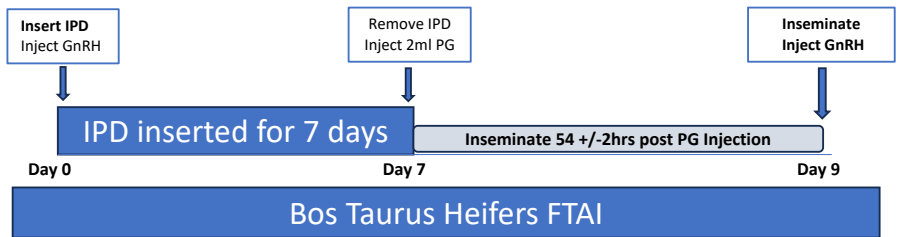
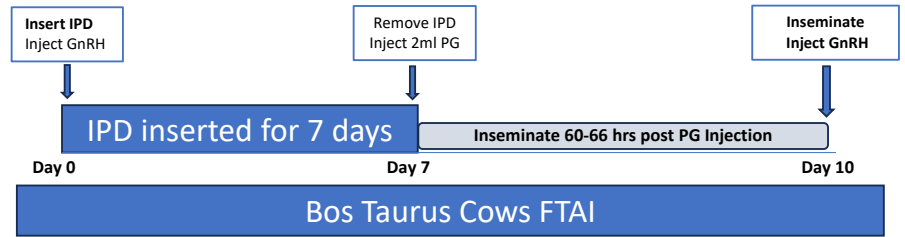
Proudly Endorsed by the NHIA Beef Working Group

- Endorsed protocol compliance and hormone handling and administration
- Significantly increased pregnancy rates early in the breeding season
- Enhance profitability with an earlier, tighter calving window and maximum potential at weaning
- Reduce incidence of post-partum anoestrus, particularly in 1st & 2nd calving females
- Select for enhanced female fertility, and extend female longevity
- Expand female breeding opportunities
- Expand value of replacement females and boost maiden heifer pregnancy rates with earlier pubertal age
- Resource efficiency with reduced bulls and facility space
- Condense breeding and calving season intervals for reduced labour and time savings

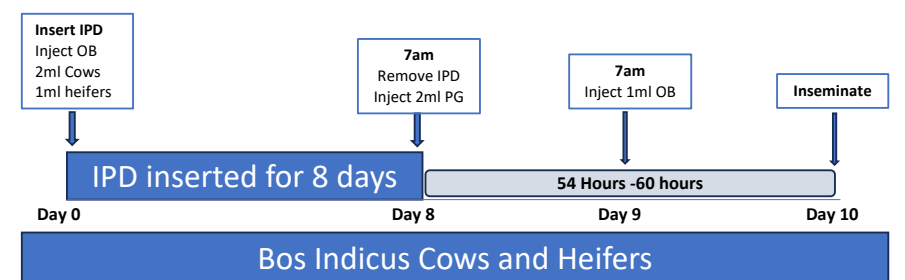
Reference:  
 IPD: Intra-vaginal Progesterone Device  
 OB: Oestradiol Benzoate,  
 PG: Prostaglandin  
 EDA: Estrus Detection Aid

Disclaimer:  
 These protocols are endorsed by the NHIA Beef Working Group and are intended solely as a reference. You must consult your regular veterinary practitioner before implementing any synchronised protocol ensuring the correct dispensing, use and application of all reproductive drugs mentioned in these protocols. These protocols are offered as a guide only in the promotion of the use of Artificial Insemination as a tool to improve the rate of genetic gain in the beef industry and profitability of beef producers.

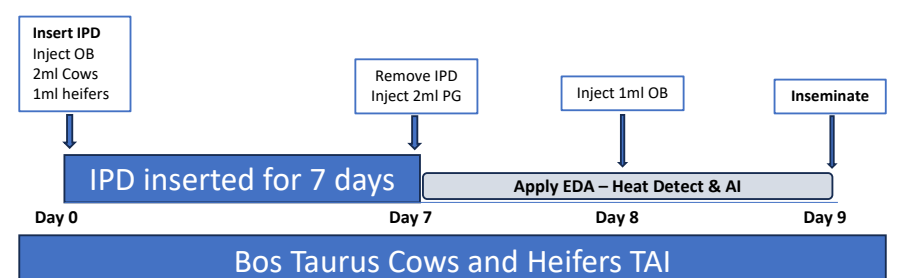
### Fixed-Time AI (FTAI)



### Bos Indicus Cows & Heifers



### Timed AI (TAI)

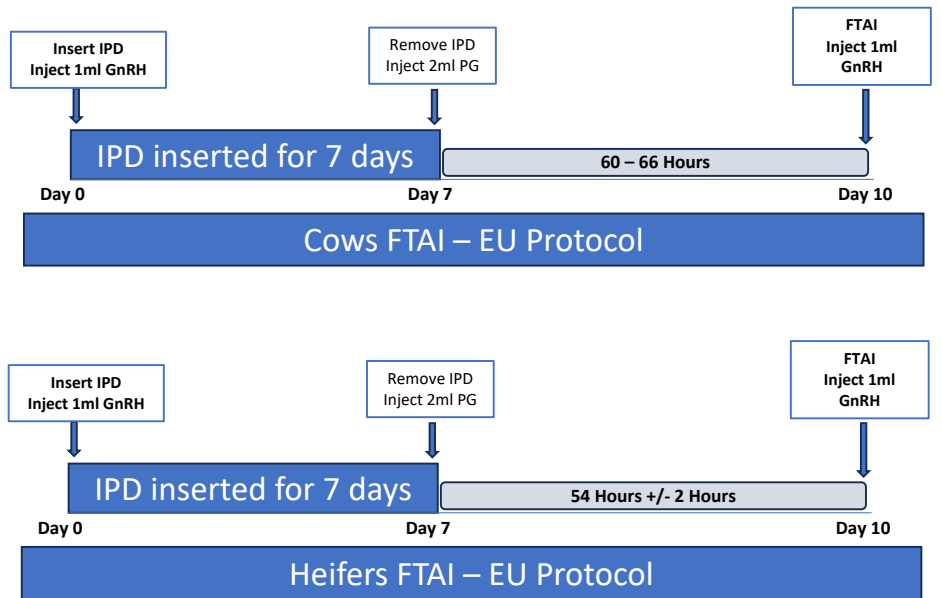


# MAXIMIZE YOUR HERD'S POTENTIAL WITH SYNCHRONISATION

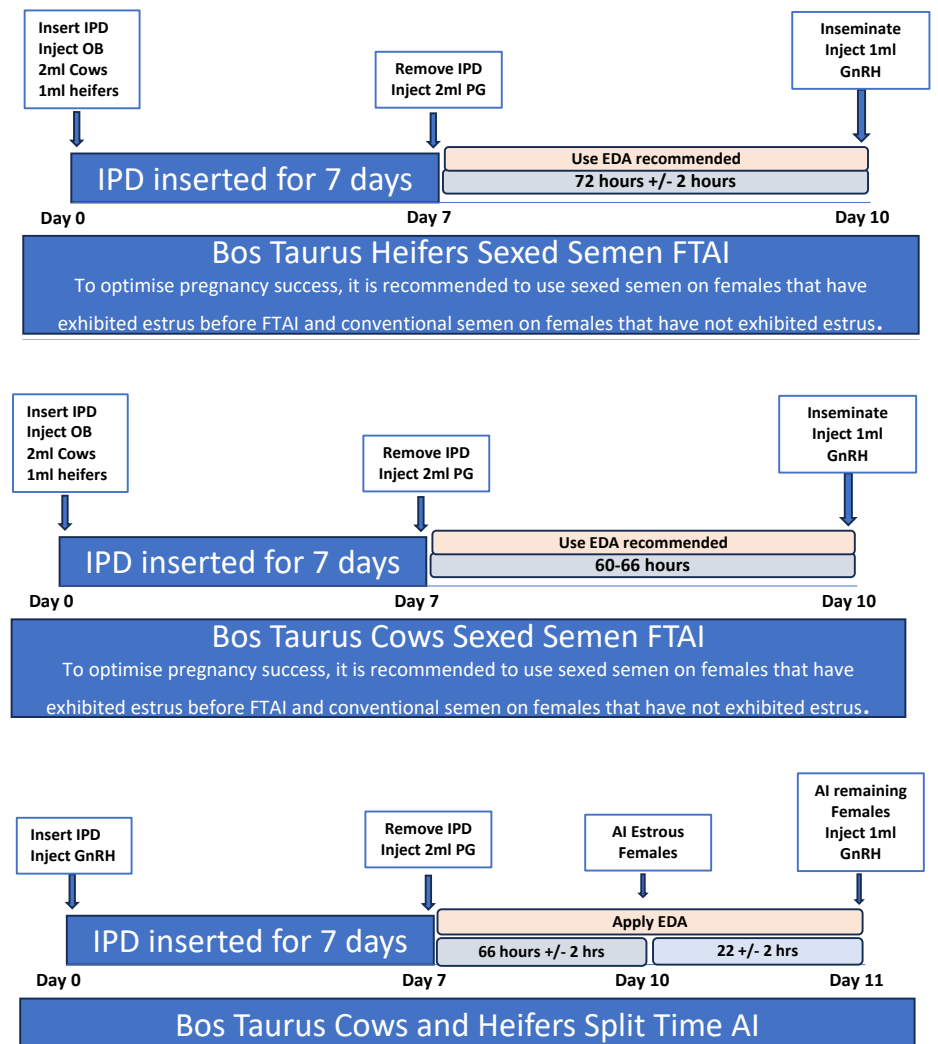
## HOW TO HAVE A SUCCESSFUL SYNCHRONISED AI PROGRAM

- Keep accurate calving, breeding, and pregnancy records.
- Ensure a suitable number of days postpartum in females.
- Animal identification should be clear and easily readable.
- Ensure herd health and disease prevention with a well designed prebreeding vaccination protocol. Vaccinate females a minimum of 30 days before the breeding season begins.
- Decide which estrus synchronisation protocol best fits your breeding program, facilities, and personnel.
- Ensure all products are purchased and on-hand prior to initiation of the protocol.
- Prepare the calendar of actions to ensure protocol compliance.
- Meticulously follow the estrus synchronisation protocol!
- If detecting estrus, spend as much time observing the animals as possible.
- Use estrous detection aids to facilitate visual observation of estrus.
- Use a properly trained technician for AI.

### EU Fixed-Time AI (FTAI)



### Sexed Semen Protocols



# Alta Genetics Australia

## TONY SIMPSON

Beef Programs Manager

0427 341 458

[tony.simpson@altagenetics.com](mailto:tony.simpson@altagenetics.com)

## KIRRILY LUMSDEN

Beef Sales and Support

0428 529 275

[kirrily.lumsden@altagenetics.com](mailto:kirrily.lumsden@altagenetics.com)

## ANDREW MEDHURST

Regional Sales

0459 957 169

[andrew.medhurst@altagenetics.com](mailto:andrew.medhurst@altagenetics.com)

## BRETT SWEETNAM

Regional Sales

0491 376 172

[brett.sweetnam@altagenetics.com](mailto:brett.sweetnam@altagenetics.com)

## MELBOURNE HEAD OFFICE

(03) 8336 1458

[info.au@altagenetics.com](mailto:info.au@altagenetics.com)

[australia.altagenetics.com/beef](http://australia.altagenetics.com/beef)

