



Alta
**FUTURE
HERD
INSIDE**

ALTA GENETICS BEEF

Autumn 2024

To our valued clients,

At Alta our mission is simple. CREATE VALUE, BUILD TRUST AND DELIVER RESULTS.

We are focused on bringing you a solution for your operation whilst ensuring you are well supported with advice and assistance from your local Alta Beef Advisors. We are dedicated to helping you make decisions that meet your needs with skilled Alta people in beef breeding business as well as skilled Alta people in beef reproduction.

In recent times we've had great success with our existing breeder sires in Baldrige 38 Special, Ellingson Three Rivers, and the high fertility sire Woodhill Patent. We are pleased to be able to offer these proven sires again this year as well as some new additions to the Alta Program.

New US additions for 24 include Connealy Reformer, BA7 Oaks Bold Ruler and Bieber Paycheck.

We are proud to add to our domestic team, Ascot Statesman S429 and Ascot Revolution R320 and from across the ditch, Rissington Titan T330. This new line-up of bulls offers the market proven pedigrees with breed leading performance.

As part of the URUS family, we welcome Leachman Cattle Co and are excited with all the opportunity's this brings in the future for beef breeding programs.

At Alta, we provide a cross section of bulls across breeds from Angus through to Wagyu and everything in between. Along with our range of genetics and breeds, we also provide experienced advice on how to get the most out of your program, creating more pregnancies, more live calves, more end value to your beef business. If you would like to hear first about new sire releases, beef updates and the locations our beef team will be traveling to throughout the year, please sign up to our beef newsletter & follow along on our social media. We look forward to seeing and hearing from you throughout the season. If there are any questions on any of the sires we have available, not only in Australia but worldwide please reach out to us at anytime.

Happy Breeding!

Your Alta Beef Team



Sign up for our newsletter



Follow us on facebook

YOUR ALTA BEEF TEAM!



Create Value ▲ Build Trust ▲ Deliver Results

WE'RE EXHIBITING AT



BEEF
2024

ROCKHAMPTON
AUSTRALIA
MAY 5-11

BOLD RULER

\$45

011AN02345 BA7 Oaks Bold Ruler ^{PVPV}



- ▲ Highly sought after genetics with proven performance
- ▲ Outstanding combination of performance, maternal & carcass traits

Connealy Tobin
Connealy Confidence 0100
Becka Gala of Conanga 8281

Connealy Confidence Plus

Connealy Consensus
Elbanna of Conanga 1209
Elbasta of Conanga 9703

EF Commando 1366
Balldridge 38 Special
Balldridge Isabel Y69

Erica of Ellston T220

Bruns Top Cut 373
Erica of Ellston R96
Erica of Ellston M38



BULL INFORMATION

Registration #	USA
Birthdate	05/01/2021
Genetic Testing	AMF,CAF,DDF,NHF,DWF,MAF,MHF,OHF,OSF,RGF

SELECTION INDEX

	\$A	\$A-L
Index Value	\$311	\$467
Breed Average	\$202	\$345
Perc	1	1

	CED %	CEDtrs %	GL days	BW kg	200 days	400 days	600 days	MCW kg	Milk kg	SC cm	DTC days	Doc	CWT kg	EMA sq.cm	RIB F mm	RUMPF mm	RBV	IMF	Claw	Foot Angle	Leg Angle
EBV	+1.8	+5.8	-2.9	+2.8	+75	+125	+150	+94	+24	+9	-4.8	+27	+101	+12.5	-4.2	-5.5	+1.7	+1.6	+84	+90	+96
Acc	62%	51%	81%	84%	85%	84%	83%	80%	79%	81%	38%	72%	77%	77%	73%	71%	66%	79%	73%	73%	59%
Perc	55	21	74	24	1	1	5	61	8	88	45	25	1	5	99	99	3	67	49	31	27

March 2024 TransTasman Angus Cattle Evaluation

REFORMER

\$35

011AN02348 Connealy Reformer ^{PVPV}



- ▲ Offers more body and mass than most calving ease sires
- ▲ Designed to sire powerful sons and big bodied, productive females

Connealy Confidence 0100
Connealy Confidence Plus
Elbanna of Conanga 1209

Connealy Reformed

EF Commando 1366
Ensa of Conanga 610
Emmy of Conanga 4105

Basin Payweight 0065
Basin Payweight 1682
21AR 0 Lass 7017

Jaycee of Conanga 6560

Connealy Mentor 7374
Jaycee of Conanga 4660 096X
Jaze of Conanga 234



BULL INFORMATION

Registration #	USA19991422
Birthdate	19/04/2020
Genetic Testing	AMF,CAF,DDF,NHF,DWF,MAF,MHF,OHF,OSF,RGF

SELECTION INDEX

	\$A	\$A-L
Index Value	\$269	\$441
Breed Average	\$202	\$345
Perc	3	3

	CED %	CEDtrs %	GL days	BW kg	200 days	400 days	600 days	MCW kg	Milk kg	SC cm	DTC days	Doc	CWT kg	EMA sq.cm	RIB F mm	RUMPF mm	RBV	IMF	Claw	Foot Angle	Leg Angle
EBV	+3.5	-.2	-6.8	+4.2	+64	+115	+136	+112	+18	+1.7	-7.2	+20	+88	+11.1	-1.0	-2.1	+0.8	+1.5	+62	+82	+94
Acc	60%	50%	80%	84%	85%	83%	82%	79%	78%	80%	38%	71%	76%	75%	72%	69%	64%	78%	75%	70%	56%
Perc	39	80	17	55	6	5	16	32	41	66	7	50	7	9	71	79	29	70	11	16	22

March 2024 TransTasman Angus Cattle Evaluation

REVOLUTION

\$55

ASCOT CATTLE CO

Ascot Revolution R320 ^{S_{VS}V}

NEW



- ▲ Standout Paratrooper son from the heart of Ascot + Millah Murrah
- ▲ Elite carcass merit, growth & structural soundness
- ▲ Top 1% Claw + Foot Angle

PEDIGREE

EF Complement 8088
 EF Commando 1366
 Riverbend Young Lucy W1470
Millah Murrah Paratrooper P15
 Millah Murrah Highlander G18
 Millah Murrah Ela M9
 Millah Murrah Ela K127
 TE Mania Emperor E343
 Ascot Hallmark H147
 Millah Murrah Brenda F123
Ascot Brenda K358
 Carrington Park Time On B7
 Millah Murrah Brenda F167
 Millah Murrah Brenda D131



BULL INFORMATION

Registration #	QQFR320
Birthdate	11/04/2020
Genetic Testing	AMF,CAF,DDF,NHF,DWF,MAF,MHF,OHF,OSF,RGF

SELECTION INDEX

	\$A	\$A-L
Index Value	\$268	\$409
Breed Average	\$202	\$345
Perc	3	10

	CED %	CEDtrs %	GL days	BW kg	200 days	400 days	600 days	MCW kg	Milk kg	SC cm	DTC days	Doc	CWT kg	EMA sq.cm	RIB F mm	RUMP F mm	RBV	IMF	Claw	Foot Angle	Leg Angle
EBV	+2.2	+6.0	-4.5	+5.1	+57	+101	+128	+82	+23	+3.9	-4.5	+21	+78	+12.4	-2.8	-3.9	+1.7	+3.3	+32	+58	+90
Acc	72%	60%	86%	88%	87%	86%	85%	82%	75%	83%	45%	80%	75%	72%	73%	73%	66%	75%	76%	72%	74%
Perc	51	20	48	75	21	24	30	78	11	7	53	47	21	5	95	95	3	25	1	1	14

FIGTREE PARK ANGUS

Ascot Statesman S429 ^{PVPV}

NEW



- ▲ Super standout Prime Minister son
- ▲ Balanced and attractive EBVs
- ▲ Calving ease, short gestation, moderate birth, above average growth, fats & IMF



Same dam as Hallmark H147 – semen available

PEDIGREE

H P C A Intensity
 Rennylea L508
 Rennylea H414
Dunoon Prime Minister P758
 TE Mania Emperor E343
 Dunoon Japara M1008
 Dunoon Japara D247
 Booroomooka Neutron A238
 Millah Murrah Digby D108
 Millah Murrah Flower A70
Millah Murrah Brenda F123
 TE Mania Infinity O4 379
 Millah Murrah Brenda D113
 Millah Murrah Brenda B21



BULL INFORMATION

Registration #	QQF21S429
Birthdate	29/09/2021
Genetic Testing	AMFU,CAFU,DDFU,NHFU

SELECTION INDEX

	\$A	\$A-L
Index Value	\$202	\$355
Breed Average	\$202	\$345
Perc	53	46

	CED %	CEDtrs %	GL days	BW kg	200 days	400 days	600 days	MCW kg	Milk kg	SC cm	DTC days	Doc	CWT kg	EMA sq.cm	RIB F mm	RUMPF mm	RBV	IMF	Claw	Foot Angle	Leg Angle
EBV	+6.2	+10.0	-9.2	+3.6	+43	+85	+118	+86	+21	+4.2	-5.0	+3	+61	+3.4	+1.0	+1.3	-0.3	+3.4	+62	+74	+88
Acc	67%	58%	83%	83%	84%	82%	83%	79%	75%	81%	47%	79%	73%	72%	72%	73%	65%	76%	76%	76%	73%
Perc	16	1	3	41	82	71	52	73	22	5	40	98	68	84	26	23	87	23	11	7	11

DEEP RIVER

\$50 (>50 STRAWS \$40)

011AN02280

Ellingson Deep River ^{PVPV}



- ▲ Displays tremendous power and mass packed into a bold-middled, sharp-fronted package
- ▲ Combines phenotypic prominence, outstanding performance and maternal heritage
- ▲ Top 1% growth EBVs, MCW, CW + \$A-L



Progeny



Progeny

PEDIGREE

CTS Remedy 1T01
 Ellingson Homestead 6030
 EA Erica 1082
Ellingson Three Rivers 8062
 Ellingson Chaps 4095
 EA Emblynette 6279
 EA Emblynette 2159
 Koupal Juneau 797
 Koupal Advance 28
 Koupal Ebonette 734
EA Primrose 5083
 LT Territory 5824 of EA
 EA Primrose 3102
 EA Primrose 9155



BULL INFORMATION

Registration #	USA19853339
Birthdate	02/03/2020
Genetic Testing	AMF,CAF,DDF,NHF,DWF,MAF,MHF,OHF,OSF,RGF

SELECTION INDEX

	\$A	\$A-L
Index Value	\$271	\$500
Breed Average	\$202	\$345
Perc	3	1

	CED %	CEDtrs %	GL days	BW kg	200 days	400 days	600 days	MCW kg	Milk kg	SC cm	DTC days	Doc	CWT kg	EMA sq.cm	RIB F mm	RUMPF mm	RBV	IMF	Claw	Foot Angle	Leg Angle
EBV	+5.2	+7.7	-5.3	+5.3	+75	+135	+185	+177	+18	+3.3	-5.0	+22	+108	+7.5	-1.8	-2.7	+0.7	+2.2	+1.06	+84	+92
Acc	60%	46%	81%	85%	85%	84%	83%	80%	78%	81%	35%	71%	78%	77%	73%	70%	66%	79%	92%	92%	54%
Perc	24	8	36	78	1	1	1	1	39	15	40	42	1	38	85	86	35	50	87	19	18

011AN02263

Ellingson Three Rivers 8062 ^{PVPV}



- ▲ Breed leader for weaning & yearling growth
- ▲ Sires big bodied, stout, high performing cattle
- ▲ Top 1% Foot Angle
- ▲ Popular high performance sire with exceptional structure – Top 1% growth EBVs & CW



Progeny: Granite Ridge Mistress U138 SJK23U138 Progeny: Merridale Vicky T87 CMD22T87

PEDIGREE

Connealy Thunder
 CTS Remedy 1T01
 CTS 7V03 Bellemere Maid 9T02

— **Ellingson Homestead 6030**
 LT Territory 5824 of EA
 EA Erica 1082
 S A V Alliance 2606

S A V Resource 1441
 Ellingson Chaps 4095
 E A Blackcap 0360

— **EA Emblynette 6279**
 Sitz Upward 307R
 EA Emblynette 2159
 EA Emblynette 434



BULL INFORMATION

Registration #	USA19203618
Birthdate	20/02/2018
Genetic Testing	AMF,CAF,DDF,NHF,DWF,MAF,MHF,OHF,OSF,RGF

SELECTION INDEX

	\$A	\$A-L
Index Value	\$248	\$422
Breed Average	\$202	\$345
Perc	9	6

	CED %	CEDtrs %	GL days	BW kg	200 days	400 days	600 days	MCW kg	Milk kg	SC cm	DTC days	Doc	CWT kg	EMA sq.cm	RIB F mm	RUMPF mm	RBV	IMF	Claw	Foot Angle	Leg Angle
EBV	-8.9	+3.9	-3.8	+8.7	+76	+138	+184	+160	+18	+1.3	-4.1	+18	+106	+8.7	-1.9	-3.7	+0.8	+2.4	+72	+52	+94
Acc	74%	51%	98%	98%	96%	94%	92%	86%	79%	91%	41%	88%	83%	82%	81%	78%	73%	83%	97%	96%	54%
Perc	98	42	60	99	1	1	1	2	42	79	63	61	1	25	86	94	29	45	25	1	22

CULMINATION

\$40

011AN02260

K C F Bennett Culmination ^{PVPV}



- ▲ Female sexed semen available
- ▲ Exceptional calving ease, breed leading performance and carcass merit
- ▲ Top 1% growth EBVs, Milk, CW + Indexes
- ▲ Top 3% EMA & positive fats

PEDIGREE

Connealy Consensus
 K C F Bennett Consent Y75
 K C F Miss Protege W148

K C F Bennett Summation
 S S Objective T510 OT26
 Thomas Patricia 9705
 Thomas Patricia 71138

K C F Bennett Energizer
 K C F Bennett Homestead
 K C F Miss Quality P164

K C F Miss Homestead C452
 Connealy Contrast
 K C F Miss Contrast Z607
 Thomas Patricia 9705



BULL INFORMATION

Registration #	USA19749024
Birthdate	30/10/2019
Genetic Testing	AMF,CAF,DDF,NHF,DWF,MAF,MHF,OHF,OSF,RGF

SELECTION INDEX

	\$A	\$A-L
Index Value	\$286	\$465
Breed Average	\$202	\$345
Perc	1	1

	CED %	CEDtrs %	GL days	BW kg	200 days	400 days	600 days	MCW kg	Milk kg	SC cm	DTC days	Doc	CWT kg	EMA sq.cm	RIB F mm	RUMPF mm	RBV	IMF	Claw	Foot Angle	Leg Angle
EBV	+6.2	+1.3	+2.5	+2.0	+71	+124	+163	+124	+29	+1.1	-2.8	+21	+114	+13.2	+1.7	+2.9	+0.4	+2.6	+0.86	+1.04	+0.98
Acc	60%	49%	82%	84%	85%	84%	83%	80%	78%	81%	37%	71%	77%	76%	73%	70%	65%	79%	85%	85%	51%
Perc	16	69	99	13	1	1	2	18	1	84	87	48	1	3	15	8	54	40	53	66	33

011AN02355

ROSEDA POWERPLANT ^{PVPV}



- ▲ Uniquely combines calving ease, high growth & marbling in an attractive package
- ▲ Combines outstanding carcass genetics of Powerball x Prime Divine x Prophet
- ▲ Top 5% growth EBVs, CW, IMF & indexes
- ▲ Outcross marbling genetics

PEDIGREE

Quaker Hill Manning 4EX9
 E W A Peyton 642
 E W A 444 of 968 Progress
Roseda Powerball23 F091
 V A R Discovery 2240
 Roseda Blackcap B103 D118
 Roseda Blackcap 0134 B103
 Rito 9Q20 of Rita 5F56 GHM
 Welytok Prime Divine 6D91
 Welytok Total 10 Erianna 3B2
Roseda Ms Flora Divine F113
 G A R Prophet
 Roseda Ms Flora Prophet B126
 Roseda Ms Flora Rito S033



Progeny: Roseda Powerplant L733_SEB_3978 Progeny: Roseda Powerplant Lucy L709

BULL INFORMATION

Registration #	USA19881320
Birthdate	13/10/2020
Genetic Testing	AMF,CAF,DDF,NHF,DWF,MAF,MHF,OHF,OSF,RGF

SELECTION INDEX

	\$A	\$A-L
Index Value	\$262	\$448
Breed Average	\$202	\$345
Perc	4	2

	CED %	CEDtrs %	GL days	BW kg	200 days	400 days	600 days	MCW kg	Milk kg	SC cm	DTC days	Doc	CWT kg	EMA sq.cm	RIB F mm	RUMPF mm	RBV	IMF	Claw	Foot Angle	Leg Angle
EBV	+4.8	+1.6	+1.4	+3.1	+72	+129	+161	+133	+16	+1.0	-3.3	+17	+91	+7.3	+1.4	+1.4	-1.4	+4.9	+1.00	+1.78	+1.08
Acc	69%	54%	89%	89%	86%	85%	84%	82%	79%	81%	39%	73%	78%	77%	74%	72%	66%	80%	69%	69%	53%
Perc	27	66	99	30	1	1	2	10	58	86	80	63	5	40	19	21	99	5	79	11	65

38 SPECIAL

\$45



Murdeduke 38 Special S393

"38 Special has proven to be one of the most outstanding bulls we have used in recent years. In the avalanche of Isabel Y96 descendants that have recently flooded in from the US he has given us the most bang for our buck of all we have sampled. His sons are quiet, structurally well put together, whilst provide calving ease without sacrificing growth and muscle. His daughters have risen to the top of our herd on the back of their excellent phenotype and paperwork with a number finding their way into the nucleus of our herd."

Simon Falkiner – Murdeduke Angus

"We inspected Baldrige 38 Special in the US back in 2016 and we have been very happy with how he has worked in our herd. 38 Special has brought the added bonus of Isabel Y69 maternal magic into our cow herd with easy keeping daughters and granddaughters that really perform to add kilos & quality into his calves."

38 Special has produced thick, deep bodied, easy doing well muscled sons for us that have been real commercial producer favourites for his balance of calving ease and progeny performance. 38 Special may bring a touch more frame and length to his progeny and they are very profitable commercially relevant cattle for the Australian industry. We are not at all surprised to see the impact & popularity Baldrige 38 Special sons are having around the country."

Colin Keevers & Dr Lisa Martin BVSc – Alummy Creek Angus, Tenterfield



Alummy Creek 38 Special S092



Glatz Black Angus 38 Special R32

"We have sold 38 Special sons in our last 3 sales at Glatz's Black Angus. They have seen strong demand from our commercial clients and stud breeders alike. 38 Special progeny are born easily from heifers and exhibit explosive growth and the robust shape we like with an ideal maturity pattern. Our oldest 38 Special daughters have performed particularly well in production. They have very neat udders and held great condition whilst weaning heavy calves. We recommend 38 Special to improve foot structure and consistency of type. Two 38 Special sons have been retained for stud duties at Glatz's Black Angus."

Ben Glatz – Glatz Black Angus

"We continue to be impressed by the 38 Special progeny at 3R. To mind he is the Y69 son that best covers all the bases. His progeny perform well, are structurally sound and all with such an attractive phenotype. When I think about the requirements of the commercial Cattleman 38 Special would be one of those rare bulls that you could blanket mate to with absolute confidence."

Geoff Birchnell – 3R Livestock; Loomberah, NSW



3RLS Nebraska T015

011AN01256 Baldrige 38 Special ^{PVPV}

BULL INFORMATION

Registration #	USA18229487	Birthdate	13/01/2015
Pedigree	EF Commando 1366 X Styles Upgrade J59		
Genetic Testing	AMF,CAF,DDF,NHF,MAF,OSF,RGF		

SELECTION INDEX

	\$A	\$A-L
Index Value	\$246	\$415
Breed Average	\$202	\$345
Perc	11	8

	CED %	CEDtrs %	GL days	BW kg	200 days	400 days	600 days	MCW kg	Milk kg	SC cm	DTC days	Doc	CWT kg	EMA sq.cm	RIB F mm	RUMPF mm	RBV	IMF	Claw	Foot Angle	Leg Angle
EBV	+6.9	+3.2	-5.0	+2.5	+62	+107	+142	+107	+22	+2.5	-5.3	+14	+75	+7.4	+1.3	-.8	-0.3	+2.9	+6.2	+1.78	+8.8
Acc	92%	80%	99%	99%	98%	98%	98%	96%	95%	98%	64%	98%	92%	91%	90%	89%	85%	90%	99%	99%	95%
Perc	12	50	40	20	8	12	10	39	17	36	33	76	29	39	21	58	87	33	11	11	11

March 2024 TransTasman Angus Cattle Evaluation

011AN01498

Woodhill Patent ^{PVPV}



- ▲ Premier calving ease sire – ideal for next heifer program
- ▲ Tremendous amount of body & mass with exceptional growth
- ▲ Descendant of Miss Traveler 58, the foundation of the Woodhill Evergreen family



Progeny: Araluen T110



Progeny: NKS21S58 at DSK Angus

PEDIGREE

Hoover Dam
Baldrige Xpand x743
Baldrige Queen S87

Baldrige Colonel C251

Styles Upgrade J59
Baldrige Isabel Y69
Baldrige Isabel T935

Basin Franchise P142
EF Complement 8088
EF Everelda Entense 6117

Woodhill Evergreen Y10-C62

S A V Final Answer 0035
Woodhill Evergreen W269-Y10
Woodhill Evergreen 22P-W269



BULL INFORMATION

Registration #	USA19199070
Birthdate	02/02/2018
Genetic Testing	AMF,CAF,DDF,NHF,DWF,MAF,MHF,OHF,OSF,RGF

SELECTION INDEX

	\$A	\$A-L
Index Value	\$255	\$448
Breed Average	\$202	\$345
Perc	6	2

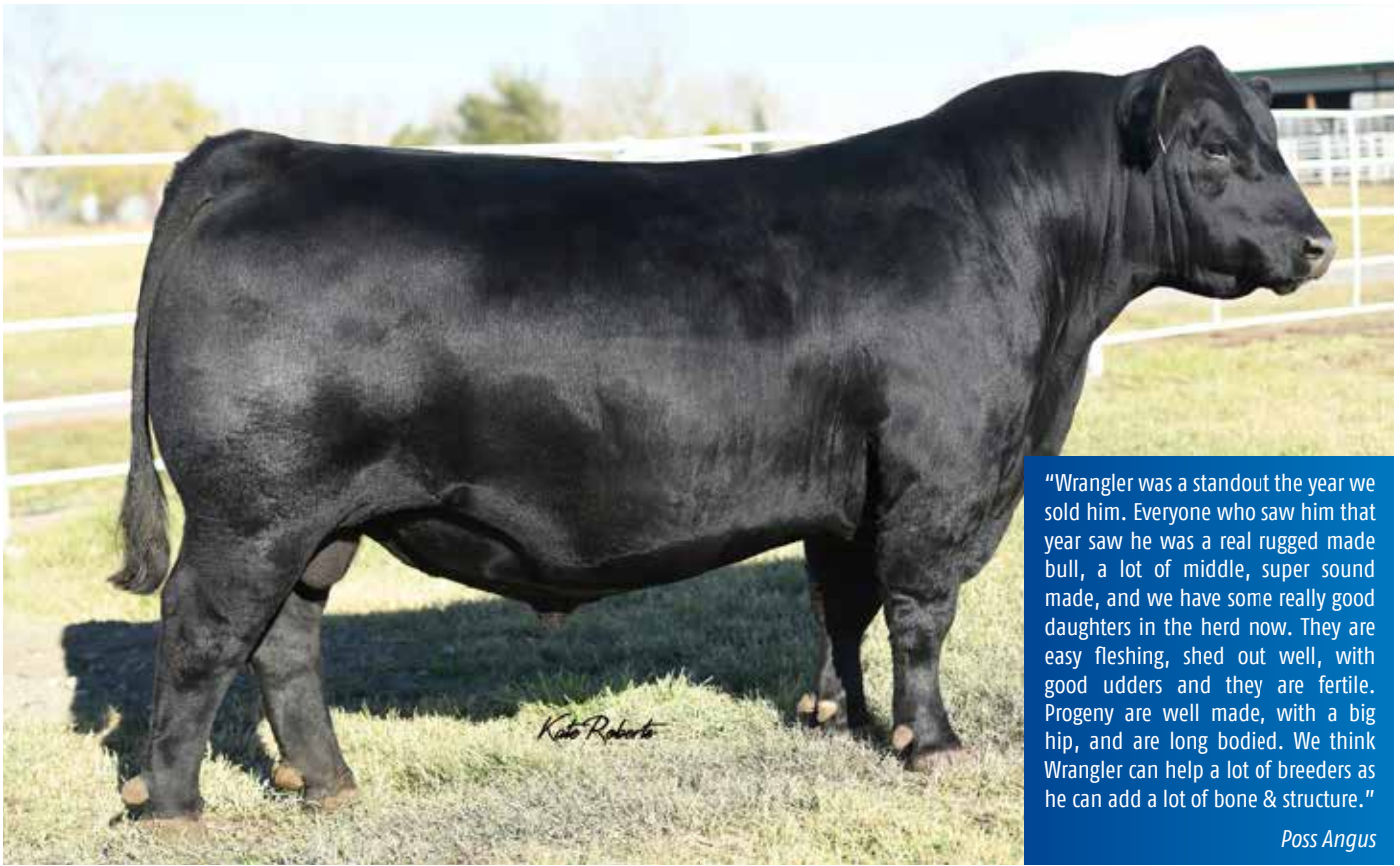
	CED %	CEDtrs %	GL days	BW kg	200 days	400 days	600 days	MCW kg	Milk kg	SC cm	DTC days	Doc	CWT kg	EMA sq.cm	RIB F mm	RUMPF mm	RBV	IMF	Claw	Foot Angle	Leg Angle
EBV	+9.4	+9.7	-6.8	+1.9	+65	+118	+147	+119	+16	+2.9	-6.0	+24	+79	+3.9	-1.9	-2.8	+0.3	+1.5	+82	+1.10	+1.00
Acc	72%	56%	96%	96%	93%	91%	91%	85%	80%	88%	46%	80%	82%	80%	79%	77%	71%	82%	80%	81%	65%
Perc	3	2	17	12	5	3	7	22	62	24	20	37	19	79	86	87	60	70	45	78	39

WRANGLER

\$35

011AN01535

Poss Wrangler ^{PVPV}



"Wrangler was a standout the year we sold him. Everyone who saw him that year saw he was a real rugged made bull, a lot of middle, super sound made, and we have some really good daughters in the herd now. They are easy fleshing, shed out well, with good udders and they are fertile. Progeny are well made, with a big hip, and are long bodied. We think Wrangler can help a lot of breeders as he can add a lot of bone & structure."

Poss Angus

- ▲ Crowd favourite at 2020 Poss Sale
- ▲ Moderate framed, muscular and powerfully built
- ▲ Sound footed with fluid movement

PEDIGREE

Basin Payweight 0065
Basin Payweight 1682
21AR 0 Lass 7017

Poss Maverick

Poss Hoover Dam 2509
Poss Pride 5163
Poss Pride 9526

MCATL Triple Stack
Connealy Power Play
Boka Gen of Conanga 783

Poss Elmaretta 648

Connealy All Around
Poss Elmaretta 9104
Poss Elmaretta 227

BULL INFORMATION

Registration #	USA19448649
Birthdate	08/02/2019
Genetic Testing	AMF,CAF,DDF,NHF,DWF,MAF,MHF,OHF,OSF,RGF

SELECTION INDEX

	\$A	\$A-L
Index Value	\$231	\$390
Breed Average	\$202	\$345
Perc	21	19

	CED %	CEDtrs %	GL days	BW kg	200 days	400 days	600 days	MCW kg	Milk kg	SC cm	DTC days	Doc	CWT kg	EMA sq.cm	RIB F mm	RUMPF mm	RBV	IMF	Claw	Foot Angle	Leg Angle
EBV	-4.6	-.1	-5.2	+5.0	+70	+122	+154	+138	+23	+2.6	-3.2	+28	+94	+10.2	-4.0	-4.9	+0.9	+3.3	+96	+88	+92
Acc	62%	50%	80%	84%	85%	84%	83%	80%	79%	81%	38%	73%	77%	76%	73%	70%	66%	79%	88%	88%	64%
Perc	91	80	37	73	2	2	3	8	12	32	81	21	3	14	99	98	24	25	73	27	18

BIG VALLEY

\$50

011AN01407

Connealy Big Valley ^{PVPV}



- ▲ Will add performance and improve carcass merit
- ▲ Powerfully built sire
- ▲ More muscle, more shape, more depth

Mogck Bullseye
Hoover No Doubt
Miss Blackcap Ellston J2

Connealy Dry Valley

Summitcrest Complete 1P55
Becca of Conanga 1617
Brisha of Conanga 746 1237

Connealy Confidence 0100
Connealy Greeley
Precious of Conanga 0484

Bunty Lay of Conanga 4930

G A R Predestined
Bunty Lana of Conanga 4102
Bunty Leah of Conanga 551



BULL INFORMATION

Registration #	USA19249322
Birthdate	30/01/2018
Genetic Testing	AMF,CAF,DDF,NHF,DWF,MAF,MHF,OHF,OSF,RGF

SELECTION INDEX	\$A	\$A-L
Index Value	\$228	\$377
Breed Average	\$202	\$345
Perc	24	28

	CED %	CEDtrs %	GL days	BW kg	200 days	400 days	600 days	MCW kg	Milk kg	SC cm	DTC days	Doc	CWT kg	EMA sq.cm	RIB F mm	RUMPF mm	RBV	IMF	Claw	Foot Angle	Leg Angle
EBV	-6.7	+1.8	-2.8	+6.9	+70	+126	150	+124	+10	+2.7	-3.3	+26	+90	+7.3	-1.2	-3.0	+0.6	+2.1	+1.04	+1.00	+0.80
Acc	65%	50%	90%	87%	86%	84%	83%	81%	79%	81%	37%	71%	78%	77%	74%	71%	66%	79%	95%	94%	57%
Perc	95	64	75	95	2	1	5	17	94	29	80	28	5	40	75	89	41	53	85	56	4

March 2024 TransTasman Angus Cattle Evaluation

ZOOM

\$30

011AN02285

DL Zoom ^{PVPV}



- ▲ Big footed and stout made with exceptional structure
- ▲ A physical powerhouse with superior length, width and thickness

DL Sonic 444
DL Dually
DL Incentive 2103

DL Automatic 1088

Basin Rainmaker 747L
DL Barbara 150
DL Barbara 768

Connealy Consensus 7229
DL Consensus 254
DL Miss Winton 451

DL Princess 1278

DL Final Grandview 53
DL Princess 286
DL Princess 700



BULL INFORMATION

Registration #	USA19867959
Birthdate	05/01/2020
Genetic Testing	AMF,CAF,DDF,NHF,DWF,MAF,MHF,OHF,OSF,RGF

SELECTION INDEX	\$A	\$A-L
Index Value	\$276	\$476
Breed Average	\$202	\$345
Perc	2	1

	CED %	CEDtrs %	GL days	BW kg	200 days	400 days	600 days	MCW kg	Milk kg	SC cm	DTC days	Doc	CWT kg	EMA sq.cm	RIB F mm	RUMPF mm	RBV	IMF	Claw	Foot Angle	Leg Angle
EBV	-5.4	+4.1	-5.1	+7.4	+87	+142	+172	+167	+10	+1.1	-6.3	+46	+109	+8.8	-.9	-2.7	+0.1	+1.7	+0.86	+0.80	+1.00
Acc	54%	43%	78%	83%	84%	82%	81%	78%	76%	78%	31%	67%	75%	74%	70%	67%	61%	77%	81%	82%	51%
Perc	93	39	39	97	1	1	1	1	92	84	16	1	1	24	69	86	72	64	53	13	39

March 2024 TransTasman Angus Cattle Evaluation



The Rissington herd, established in 1936 at the family Ellerton property in New Zealand, has built a distinguished reputation for breeding high-performance Angus cattle. Over the decades, the herd has embraced cutting-edge technologies to drive genetic progress and enhance profitability.

Recent years have seen substantial investments in advanced tools such as Vytelle Feed Efficiency testing, Genomics, In Vitro Fertilization (IVF), and Sexing Technologies. These innovations have propelled the Rissington herd to new levels of genetic improvement, ensuring competitiveness in today's dynamic agricultural landscape.

Participation in the \$Profit Global Multibreed Analysis has further fortified the herd's breeding program by integrating extensive phenotypic data from like-minded seedstock operations worldwide. This evaluation allows the herd to benchmark its profitability against global standards, ensuring its long-term viability and competitiveness.

The Rissington herd stands as a beacon of tradition and innovation in Angus breeding, embodying a commitment to excellence. By continually pushing the boundaries of genetic advancement and contributing to the cattle industry's progress, the herd sets a standard to underpin sustainable and forward-thinking agricultural practices.

GENETIC EVALUATIONS

Our genetic evaluations are at the heart of every breeding decision we make. We unashamedly continue to collect a large volume of data on our cattle for over 25 individual traits. For many decades this data got fed into the relevant breed association databases for Angus & Simmental in the early days, a multibreed for the Profit Maker. The weakness of this was that we could not compare across breeds & only within.

Fast forward to today. We still send our Angus, Simmental & Charolais data, including genotypes to the relevant breed associations for analysis, but more importantly, all this data, including genotypes, no matter what the breed composition of the animal, goes into the Leachman \$Profit Global Multi-Breed Evaluation.



The Leachman \$Profit analysis

- 1.5 million beef animals with annual contributions of over 35k
- 75,000 high density, 50k SNP profiles complement pedigree & performance data
- Over 40,000 animals with individual feed intake records
- Genomic Enhanced BV's & Indexes

We are very aware that more data can get overwhelming and confusing, yet what commercial farmers want to know is which bull(s) will make them more money.

The \$Profit Indexes Leachman runs simulate actual outcomes based on the genetic inputs that impact revenue and cost. It makes a partial budget. The outcome of \$Profit analysis is it allows us to measure, rank and select our cattle for profitability. It also now allows commercial farmers to leverage this on their own cattle through Inherit Select.



Titan at 12 months of age



- ▲ Young gun out of the acclaimed Rissington Cattle Company in NZ
- ▲ Great style & balance on a sound structure
- ▲ Unique carcass data: +11.2 EMA & +6.1 IMF
- ▲ Rose to the very top of 2022 Calf Drop on Leachman Global Analysis for \$Profit out of over 600 calves, with a \$Profit of \$34,580 (top 1%), \$Feeder of \$309 (top 1%) which predicts weaning to harvest performance
- ▲ Sired by proven sire in Rissington Meteor R321 and out of young Leachman Foundation daughter making her mark in Rissington herd

PEDIGREE

G A R Sure Fire 6404
 GB Fireball 672
 GB Anticipation 432

Rissington Meteor R321
 Rissington 135262
 Ellerton C90
 Ellerton 135068

G A R Progress
 Leachman Foundation G081D
 TCR Ever Focus XG071

Ellerton 190379
 Rissington 121001
 Ellerton 140547
 Ellerton 110190

BULL INFORMATION

Registration #	BGB22T330
Birthdate	23/09/2022
Genetic Testing	AMF,CAF,DDF,NHF,DWF,MAF,MHF,OHF,OSF,RGF

SELECTION INDEX

	\$A	\$A-L
Index Value	\$232	\$376
Breed Average	\$202	\$345
Perc	20	29

	CED %	CEDtrs %	GL days	BW kg	200 days	400 days	600 days	MCW kg	Milk kg	SC cm	DTC days	Doc	CWT kg	EMA sq.cm	RIB F mm	RUMPF mm	RBV	IMF	Claw	Foot Angle	Leg Angle
EBV	+3.6	+5.1	-1.3	+2.6	+49	+84	+112	+101	+22	+2.0	-3.5	+7	+70	+11.2	-3.3	-4.4	+1.4	+6.1	+86	+80	+92
Acc	62%	52%	81%	80%	81%	79%	79%	76%	72%	77%	38%	72%	68%	68%	68%	69%	59%	73%	63%	63%	59%
Perc	38	28	90	21	58	71	65	49	16	54	76	93	43	9	97	96	7	2	53	13	18

RICOCHET

\$40

MERLEWOOD ANGUS

Reiland Ricochet R952 ^{PVPV}

NEW



- ▲ Outcross marbling genetics
- ▲ Elite carcass merit
- ▲ Phenotypic standout with moderate mature cow size
- ▲ Proven calving ease prospect

PEDIGREE

Rennylea Edmund E11
Kidman Impact K99
Kidman Abigail H106

Reiland Nimbo N1176

Tuwharetoa Regent D145
Strathewen Regent Wilpena J49
Strathewen Berkley Wilpena G37

Tuwharetoa Regent D145
Strathewen Regent E23 H70
Strathewen Dinky-Di Mittagong E23

Reiland Lowen M407

G A R Solution
Reiland Lowen E59
Reiland Lowen B559

BULL INFORMATION

Registration #	NLRR952
Birthdate	29/08/2020
Genetic Testing	AMF,CAF,DDF,NHF,DWF,MAF,MHF,OHF,OSF,RGF

SELECTION INDEX

	\$A	\$A-L
Index Value	\$216	\$377
Breed Average	\$202	\$345
Perc	36	28

	CED %	CEDtrs %	GL days	BW kg	200 days	400 days	600 days	MCW kg	Milk kg	SC cm	DTC days	Doc	CWT kg	EMA sq.cm	RIB F mm	RUMPF mm	RBV	IMF	Claw	Foot Angle	Leg Angle
EBV	+8.7	+5.3	-6.4	+1.4	+47	+83	+105	+94	+19	+3.3	-6.5	+35	+66	+6.3	+1.5	+2.4	-0.8	+4.5	+7.0	+1.08	+1.14
Acc	66%	57%	84%	84%	84%	82%	82%	79%	75%	80%	44%	75%	72%	71%	71%	72%	63%	76%	59%	59%	57%
Perc	4	26	21	8	67	76	78	61	36	15	13	7	55	52	18	11	97	8	21	74	81

QUICKSILVER \$50 (>50 STRAWS \$40)

STELLAR LIVESTOCK Stellar Quicksilver Q7 ^{PVPV}



- ▲ Superior carcass & marbling - Top 4% EMA & IMF
- ▲ Attractive sire with shape & muscling
- ▲ Pedigree stacked with excellent structural EBVs

G A R Progress
G A R Momentum
G A R Big Eye 1770

Lawsons Momentous M518

T E Mania Africa A217
Lawsons Africa H229
Lawsons Rocknd Ambush E1103

C R A Bextor 872 5205 608
G A R Prophet
G A R Objective 1885

Stellar Vicky Prophet N9

Sitz Upward 307R
Aberdeen Estate Vicky G93
KO Vicky C44



BULL INFORMATION

Registration #	JCAQ7
Birthdate	30/07/2019
Genetic Testing	AMF,CAF,DDF,NHF,DWF,MAF,MHF,OHF,OSF,RGF

SELECTION INDEX	\$A	\$A-L
Index Value	\$241	\$375
Breed Average	\$202	\$345
Perc	13	29

	CED %	CEDtrs %	GL days	BW kg	200 days	400 days	600 days	MCW kg	Milk kg	SC cm	DTC days	Doc	CWT kg	EMA sq.cm	RIB F mm	RUMPF mm	RBV	IMF	Claw	Foot Angle	Leg Angle
EBV	-3.8	+2	-6.7	+4.6	+61	+106	+135	+101	+21	+1.1	-3.6	+40	+71	+12.9	-.7	-1.3	-0.1	+5.2	+86	+76	+98
Acc	76%	67%	87%	88%	88%	87%	88%	84%	78%	85%	55%	82%	79%	76%	76%	77%	70%	79%	82%	82%	74%
Perc	88	78	18	64	11	13	18	49	19	84	74	3	39	4	64	67	81	4	53	9	33

March 2024 TransTasman Angus Cattle Evaluation

PLATINUM \$40

BELLASPUR ANGUS Bellaspur Platinum P46 ^{SVSV}



- ▲ Impressive Get Cracking son, displays muscularity, big bodied, structural correctness in a moderate frame
- ▲ Dam Erica M032, stylish Westward daughter from respectable Coolana breeding herd

TE Mania Yorkshire Y437
Te Mania Berkley B1
TE Mania Lowan Z53

Alloura Get Cracking G10

C A Future Direction 5321
Alloura Jedda Z15
Alloura Jedda X07

G A R Predestined
Werner Westward 357
BFF Everelda Entese 4015

Coolana Erica M032

Coolana Right Time C71
Coolana Juana Erica F232
Coolana Juana Erica A4

BULL INFORMATION

Registration #	GSBP46
Birthdate	27/08/2018
Genetic Testing	AMF,CAF,DDF,NHF,DWF,MAF,MHF,OHF,OSF,RGF

SELECTION INDEX	\$A	\$A-L
Index Value	\$224	\$382
Breed Average	\$202	\$345
Perc	27	25

	CED %	CEDtrs %	GL days	BW kg	200 days	400 days	600 days	MCW kg	Milk kg	SC cm	DTC days	Doc	CWT kg	EMA sq.cm	RIB F mm	RUMPF mm	RBV	IMF	Claw	Foot Angle	Leg Angle
EBV	-1.0	+1.6	-.9	+5.1	+50	+86	+112	+113	+10	+1.8	-7.6	+12	+62	+8.3	+3.2	+2.9	-0.2	+4.1	+78	+94	+98
Acc	74%	63%	91%	89%	88%	89%	88%	84%	77%	87%	54%	80%	79%	79%	79%	80%	73%	80%	70%	70%	68%
Perc	76	66	92	75	55	66	65	29	94	62	5	83	66	29	4	8	84	13	36	41	33

March 2024 TransTasman Angus Cattle Evaluation

PACESETTER

\$35

- ▲ Outcross pedigree and physical standout
- ▲ Offers extra length of body and deep flank
- ▲ Short gestation with growth & fertility

011AN01340

KR Pacesetter ^{SVS}



SydGen 928 Destination 5420
Prairie Pride Next Step 2036
Flying V Miss Pride 426

RBM Step Ahead C80

EXAR 263C
Basin Charisma U691
Basin Charisma 4866

Sitz Dash 10277
Barstow Cash
Barstow Queen W16

KR Blackbird 4295

Summitcrest DARTH 0X19
WK Blackbird 2250
Summitcrest Blackbird 22W1

BULL INFORMATION

Registration #	USA18874634
Birthdate	15/02/2017
Genetic Testing	AMF,CAF,DDF,NHF,DWF,MAF,MHF,OHF,OSF,RGF

SELECTION INDEX	\$A	\$A-L
Index Value	\$236	\$434
Breed Average	\$202	\$345
Perc	17	3

	CED %	CEDtrs %	GL days	BW kg	200 days	400 days	600 days	MCW kg	Milk kg	SC cm	DTC days	Doc	CWT kg	EMA sq.cm	RIB F mm	RUMPF mm	RBV	IMF	Claw	Foot Angle	Leg Angle
EBV	-2.0	+5.1	-7.3	+6.8	+78	+136	+171	+165	+14	+3.2	-4.6	+21	+105	+6.4	-3.7	-5.1	+0.8	+0.8	+1.00	+90	+92
Acc	64%	45%	89%	89%	87%	85%	85%	81%	77%	81%	33%	71%	78%	75%	72%	69%	63%	78%	68%	68%	54%
Perc	81	28	12	95	1	1	1	1	71	17	50	46	1	51	98	98	29	86	79	31	18

March 2024 TransTasman Angus Cattle Evaluation

DOUBLE PLAY

\$35

- ▲ Big bodied power sire with outstanding carcass merit
- ▲ Top 1% growth EBVs, CW + \$A-L

011AN01473

44 Double Play ^{PVPV}



Basin Payweight 006S
Basin Payweight 1682
21AR O Lass 7017

TEX Playbook 5437

Summitcrest Complete 1P55
Rita 1C43 of 9M26 Complete
Rita 9M26 of Rita 5F56 Pred

A A R Ten X 7008 SA
V A R Discovery 2240
Deer Valley Rita 0308

Vintage Rita 5008

Connealy Consensus 7229
V A R Rita 3160
Deer Valley Rita 7105

BULL INFORMATION

Registration #	USA19371100
Birthdate	11/10/2018
Genetic Testing	AMF,CAF,DDF,NHF,DWF,MAF,MHF,OHF,OSF,RGF

SELECTION INDEX	\$A	\$A-L
Index Value	\$272	\$455
Breed Average	\$202	\$345
Perc	2	1

	CED %	CEDtrs %	GL days	BW kg	200 days	400 days	600 days	MCW kg	Milk kg	SC cm	DTC days	Doc	CWT kg	EMA sq.cm	RIB F mm	RUMPF mm	RBV	IMF	Claw	Foot Angle	Leg Angle
EBV	-3.1	+6.0	-4.7	+5.2	+83	+137	+167	+144	+18	+2.3	-4.2	+28	+107	+9.3	-3.3	-3.2	+0.5	+1.8	+1.00	+84	+76
Acc	63%	53%	81%	84%	85%	84%	83%	80%	79%	81%	42%	73%	78%	77%	73%	71%	66%	79%	74%	74%	61%
Perc	86	20	45	77	1	1	1	5	42	43	60	21	1	20	97	90	47	61	79	19	2

March 2024 TransTasman Angus Cattle Evaluation

TOP ANGUS SIRES

CALVING EASE

Reg number	Name	CED
USA19444015	Sterling Precise	+10.5
USA19199070	Woodhil Patent	+9.4
NLRR952	Reiland Ricochet R952	+8.7
USA18229487	Baldrige 38 Special	+6.9
QQF215429	Ascot Statesman S429	+6.2

BIRTH WEIGHT

Reg number	Name	BW
USA19444015	Sterling Precise	-1.1
NLRR952	Reiland Ricochet R952	+1.4
USA19199070	Woodhil Patent	+1.9
H10H9	Ayrvale Hercules H9	+2.0
USA19749024	KCF Bennett Culmination	+2.0

400 DAY GROWTH

Reg number	Name	400D
USA19867959	DL Zoom	+142
USA19203618	Ellingson Three Rivers	+138
USA19371100	44 Double Play	+137
USA19509392	Byergo Winston	+137
USA18874634	KR Pacesetter	+136

SCROTAL SIZE

Reg number	Name	SS
QQF215429	Ascot Statesman S429	+4.2
QQFR320	Ascot Revolution R320	+3.9
QQFH147	Ascot Hallmark H147	+3.7
USA19853339	Ellingson Deep River	+3.3
NLRR952	Reiland Ricochet R952	+3.3

INTRAMUSCULAR FAT

Reg number	Name	IMF
BGB22T330	Rissington Titan T330	+6.1
JCAQ7	Stellar Quicksilver Q7	+5.2
USA19881320	Roseda Powerplant	+4.9
USA18203854	Baldrige Forecaster	+4.7
NLRR952	Reiland Ricochet R952	+4.5

FOOT ANGLE

Reg number	Name	Foot Angle
USA19203618	Ellingson Three Rivers	+0.52
QQFR320	Ascot Revolution R320	+0.58
QQF215429	Ascot Statesman S429	+0.74
USA18203854	Baldrige Forecaster	+0.76
JCAQ7	Stellar Quicksilver Q7	+0.76

GESTATION LENGTH

Reg number	Name	GL
QQF215429	Ascot Statesman S429	-9.2
USA19444015	Sterling Precise	-9.1
H10H9	Ayrvale Hercules H9	-7.7
USA18874634	KR Pacesetter	-7.3
USA19991422	Connealy Reformer	-6.8

200 DAY GROWTH

Reg number	Name	200D
USA19867959	DL Zoom	+87
USA19371100	44 Double Play	+83
USA18874634	KR Pacesetter	+78
USA19509392	Byergo Winston	+78
USA19203618	Ellingson Three Rivers	+76

600 DAY GROWTH

Reg number	Name	600D
USA19853339	Ellingson Deep River	+185
USA19203618	Ellingson Three Rivers	+184
USA19509392	Byergo Winston	+179
USA19867959	DL Zoom	+172
USA18874634	KR Pacesetter	+171

EYE MUSCLE AREA

Reg number	Name	EMA
USA19749024	KCF Bennett Culmination	+13.2
JCAQ7	Stellar Quicksilver Q7	+12.9
USA19984739	BA7 Oaks Bold Ruler	+12.5
QQFR320	Ascot Revolution R320	+12.4
BGB22T330	Rissington Titan T330	+11.2

CLAW

Reg number	Name	Claw
QQFR320	Ascot Revolution R320	+0.32
QQFH147	Ascot Hallmark H147	+0.46
CAN2151993	HF Tribunal	+0.50
USA18229487	Baldrige 38 Special	+0.62
USA19991422	Connealy Reformer	+0.62

ANGUS BREEDING INDEX

Reg number	Name	\$A
USA19984739	BA7 Oaks Bold Ruler	\$311
USA19749024	KCF Bennett Culmination	\$286
USA19867959	DL Zoom	\$276
USA19371100	44 Double Play	\$272
USA19853339	Ellingson Deep River	\$271



TODAY IS YOUR OPPORTUNITY **TO** BUILD THE TOMORROW YOU WANT.

At Trans Ova Genetics, we're empowering breeders to build a tomorrow that exceeds expectations. We provide the complete toolbox of services you need to create a legacy of excellence. Today's choices shape tomorrow's success. Choose Trans Ova Genetics and leave a lasting legacy for the next generation.

For a full list of locations, visit www.transova.com

TRANS  **OVA**
genetics

EMBRYO TRANSFER • IN VITRO FERTILIZATION • SEXED SEMEN
DONOR HOUSING • RECIPIENT OPTIONS • GENETIC PRESERVATION • CLONING

PAYCHECK

\$60

011AR03100 Bieber Paycheck K102



BULL INFORMATION

Reg #	4620417	Birthdate	10/01/2022
-------	---------	-----------	------------

- ▲ High selling bull – 2023 Bieber Red Angus Sale
- ▲ The whole package – outstanding calving ease, growth & carcass traits
- ▲ 11 traits in top 10% of breed

WFL Merlin 018A
WFL Frankly F8276
WFL Nebula 165Z 235B

Larr Paycheck 0728

H2R Profitbuilder B403
Larr Miss CC Flower 7528
BKC Miss Yield Grade 528

Pie Stockman 4051
Bieber CL Stockmarket E119
Bieber CL Adelle 475C

Bieber Primrose 139H

Bieber Spartacus A193
Bieber Primrose 204E
Bieber Primrose 509B

	INDEX			PERFORMANCE						MATERNAL					CARCASS				
	PRO\$	HB	GM	CE	BW	WW	YW	ADG	DMI	MM	ME	HPG	CEM	STAY	MARB	YG	CW	REA	BF
EPD	+131	+52	+79	+19	-3.4	+103	+173	+1.44	+3.02	+31	+24	+13	+11	+14	+1.09	+0.06	+40	+0.60	+0.05
Acc	-	-	-	44	49	49	49	49	17	14	10	0	22	31	38	31	39	36	32
Perc	5	48	2	2	23	1	1	1	99	9	99	21	1	56	1	48	5	2	96

March 25, 2024 Red Angus Association of America

WHISKEY RIVER \$50

011AR03079 C-Bar Whiskey River 8105F



BULL INFORMATION

Reg #	4045146	Birthdate	11/01/2018
-------	---------	-----------	------------

- ▲ High performance sire who is a phenotypic standout
- ▲ Featured & high selling bull at 2019 C-Bar Ranch
- ▲ High growth & muscle

BUF CRK Lancer R017
BUF CRK The Right Kind U199
BUF CRK Shoshone R353

Pie One of a Kind 352

LSF Sand Hills 9008W
Pie Fayette 1160
Pie Fayette 782

HXC Conquest 4405P
C-Bar Contour 107X
Brown C-Abigrace S602

Jeffries MS Joline Z243

Feddes Big Sky R9
Brown MS Big Sky U7877
Brown C-Jolene S605

	INDEX			PERFORMANCE						MATERNAL					CARCASS				
	PRO\$	HB	GM	CE	BW	WW	YW	ADG	DMI	MM	ME	HPG	CEM	STAY	MARB	YG	CW	REA	BF
EPD	+38	-2	+40	+10	-.5	+83	+128	+0.28	+1.92	+29	+14	+11	+7	+7	+0.46	-.05	+30	+0.49	+0.01
Acc	-	-	-	47	50	48	48	48	19	28	16	33	32	39	43	35	44	41	38
Perc	93	98	44	77	71	6	9	23	81	25	92	59	54	97	42	10	31	9	28

March 25, 2024 Red Angus Association of America

JOKER

\$35

- ▲ Purebred Simmental
- ▲ Balanced trait sire across the board
- ▲ Big time carcass sire with top 1% MARB & top 10% REA

011SM02069

Hook's Joker 8J



BULL INFORMATION

Reg # 3866465
 Birthdate 15/02/2021

TJ Main Event 503B
 CDI Mainline 265D
 Hook's Beyonce 82B

Hook's Frontline 40F

Hooks Shear Force 38K
 Hook's Carina 15C
 Hook's Yearn 39Y

Hooks Shear Force 38K
 Hook's Beacon 56B
 Hooks Zafirah 41Z

Hook's Evita 18E

Hooks Titus 31T
 Hook's Yuma 49Y
 Hook's Universal 17U

	PERFORMANCE					MATERNAL					CARCASS					INDEX		
	CE	BW	WW	YW	ADG	MCE	MILK	MWW	STAY	DOC	CW	YG	MRB	BF	REA	SHR	API	TI
EPD	+15.5	-.5	+83.7	+130.7	+.29	+11.1	+36.2	+77.9	+22.2	+13.2	+38.1	-.38	+.79	-.057	+1.11	-.42	+192.5	+103.6
Acc	.47	.51	.53	.53	.53	.32	.28	.35	.38	.51	.47	.38	.45	.42	.45	.07		
Perc	10	20	30	25	25	2	1	3	2	35	20	55	1	85	10		1	2

March 19, 2024 American Simmental Association

BLAZE

\$45

- ▲ Standout polled fullblood
- ▲ Bloodlines go back to the renowned Bar 5 genetics
- ▲ Exceptional depth of body & rib
- ▲ Utilized Australia wide

011SM02036

SFJ Alta's Blaze 102Y



BULL INFORMATION

Reg # 2819676
 Birthdate 10/02/2011

Takar
 Sleepy Hollow Blaze
 Anchor T Ingrid 9A

Bar 5 Blaze 802J

Bar 5 Prestige 681T
 Bar 5 Precious 405Z
 Bar 5S 407L Exclusive

DFM Marcus 14M
 Saugeen Scorpion 31S
 Hemr Martina 1M

Saugeen Miss Elmer 101U

SU Painter 59P
 Saugeen Satin 95S
 Bar 5 Satin Lady 402G

	PERFORMANCE					MATERNAL					CARCASS					INDEX		
	CE	BW	WW	YW	ADG	MCE	MILK	MWW	STAY	DOC	CW	YG	MRB	BF	REA	SHR	API	TI
EPD	+8.5	+2.7	+64.1	+82.1	+.11	+4.3	+34.7	+66.7	+12.5	+4.6	+12.2	-.58	-.19	-.113	+.96	-	+94.2	+62.0
Acc	.49	.56	.44	.44	.44	.22	.17	.27	.27	.31	.37	.28	.31	.27	.34	-	-	-
Perc	20	15	80	90	95	30	40	65	80	90	75	35	90	80	25		70	75

March 19, 2024 American Simmental Association

LODESTAR

\$35

- ▲ SimAngus 1/2 SM x 1/2 AN
- ▲ Featured & high selling bull at Irvine Ranch
- ▲ Big time spread bull offering CE & exceptional performance
- ▲ Homozygous polled & black

011SM02068 IR Lodestar H380



BULL INFORMATION

Registration # 3839823
Birthdate 09/10/2020

GW Predestined 701T
GW Step Out 672X
GW Miss Lucky Charm 832P

Redhill 672X X004 231A

GW Premium Beef 021TS
GW Miss Prem Beef X004
GW Miss Quarter 538U

Hooks Shear Force 38K
Hook's Beacon 56B
Hooks Zafirah 41Z

IR Ms Lucy E711

G A R Prophet5
EXAR Lucy 5643
EXAR Lucy 0901

	PERFORMANCE					MATERNAL					CARCASS					INDEX		
	CE	BW	WW	YW	ADG	MCE	MILK	MWW	STAY	DOC	CW	YG	MRB	BF	REA	SHR	API	TI
EPD	+16.5	-4.0	+84.7	+131.4	+29	+11.3	+23.8	+67.0	+16.8	+8.4	+46.7	-.21	+1.04	-.002	+1.14	-.35	+191.0	+108.3
Acc	.58	.72	.65	.62	.62	.33	.24	.35	.37	.56	.44	.39	.49	.42	.49	.05		
Perc	15	5	20	25	35	4	55	30	30	90	15	55	2	90	3	50	1	1

March 19, 2024 American Simmental Association

EXECUTIVE

\$25

- ▲ SimAngus 7/16 SM x 9/16 AN
- ▲ Calving ease sire with exceptional phenotype
- ▲ Breed leading indexes
- ▲ Homozygous polled & black

011SM02046 EGL Executive Order E019



BULL INFORMATION

Reg # 3355483
Birthdate 20/02/2017

Nichols Legacy G151
Hooks Shear Force
C&D Tracy

Hook's Beacon 56B

GW Predestined 701T
Hooks Zafirah 41Z
Hook's Uno 54U

B/R New design 036
B/R Frontier 095
White Fence Pride H1

EGL Miss Frontier 4087

TC Stockman 365
EGL 0404
EGL 7329

	PERFORMANCE					MATERNAL					CARCASS					INDEX		
	CE	BW	WW	YW	ADG	MCE	MILK	MWW	STAY	DOC	CW	YG	MRB	BF	REA	SHR	API	TI
EPD	+12.7	-.4	+75.5	+119.7	+28	+9.9	+27.3	+64.0	+20.4	+9.3	+42.0	+0.0	+.95	+0.018	+0.55	-.36	+177.3	+95.1
Acc	.56	.60	.59	.59	.59	.39	.34	.41	.40	.50	.50	.40	.51	.47	.46	.05		
Perc	50	45	55	45	40	15	25	40	4	85	25	99	2	99	75	45	3	10

March 19, 2024 American Simmental Association

FINAL CUT

\$30

011BN01064



BULL INFORMATION

Registration # R10478586
 Birthdate 28/08/2020

	CED	BW	WW	YW	MILK	TM	CEM	SC	REA	IMF	FAT	HEIF PREG	STAY	COW WT	TERM INDEX	FERD INDEX
EPD	+9.2	-1.7	+25	+49	+4	+16	+3.81	+62	+35	+1	+0.11	+4.98	+1.92	+13.54	+2.56	+3.02
Acc	.37	.45	.42	.40	.30	-	.30	.45	.45	.52	.47	.25	.16	.24	-	-
% Rank	10	10	40	40	90	70	40	40	30	45	70	30	35	95	35	70

March 2024, International Brangus Breeders Association

- ▲ Calving ease specialist
- ▲ Use Final Cut to create fertile feminine females
- ▲ Attractive deep sided bull with extra muscle expression

MC New Direction 000 M24
 MC Revelation 129T
 MB MS Nimitz 129R

CB Final Cut 924X

MC Guns Donovan 124R
 TBM MS Guns 924T3
 RBM MS 52 Cool Hand 924R

CB Hombre 541T3
 TJM Coronado 535X
 MS Brinks Lambert 535T4

MS DMR Coronado 795C

CB Hombre 541T3
 MS DMR Jethro 795Y2
 MS Brinks Uppercut 795R9

COLISEUM

\$30

011SE01615 SNV Coliseum 3115A ET



BULL INFORMATION

Registration # 1301923
 Birthdate 26/10/2013

	BW	WW	YW	MILK	MAT M&G
EPD	+2.7	+14	+18	+20	+18
Acc	.64	.42	.14	.16	-

Senepol Cattle Breeders Association March 2024

- ▲ Excels on confirmation & soundness
- ▲ Very balanced numbers, consistent on growth with strong maternal features
- ▲ Excellent opportunity for an outcross pedigree with good numbers

CN 6013D
 CN 6747J
 CN 6047D

CN 811R

CN 6544H
 CN 138K
 CN 6221H

WC 947B
 PRR 9205J
 WC 5813

PRR 4092P

ASL Big Ed HU47
 CRSC 69E ET
 ASL Queen 156U ET

NOCKOUT

\$40

TARCOMBE HEREFORDS Tarcombe Nockout R064



- ▲ Calving ease sire
- ▲ Add growth & carcass quality to any program
- ▲ Homozygous polled

Wirruna Hartwig H297
Wirruna Kalinma K326
Wirruna Cora H303

Yavenvale Nockout N312

Minlacowie Griffin
Yavenvale Corisande L385
Yavenvale Corisande H143

Elite 4110 H297
Banemore Elite M102 AI
Banemore Summer Day A009

Banemore Last Day P084

Banemore Echucah16
Banemore LasdayL14 AI
Banemore Last Day D76

BULL INFORMATION	
Reg #	THSR064
Birthdate	05/04/2020
Genetic Testing	IEF DLF HYF MSUDF BVDVNeg

SELECTION INDEX	Southern Self-Replacing Index (\$)	Northern Self-Replacing Index (\$)	Southern Baldy Maternal Index (\$)	Northern Baldy Maternal Index (\$)
Index Value	\$227	\$211	\$231	\$162
Breed Average	\$143	\$129	\$146	\$107

	CED %	CEDtrs %	GL days	BW kg	200 days	400 days	600 days	MCW kg	Milk kg	SS cm	DTC days	CWT kg	EMA sq.cm	RIB F mm	RUMPF mm	RBV %	IMF %	D
EBV	+6.2	+5.4	-1.7	+3.9	+46	+80	+109	+75	+22	+4.9	-5.3	+74	+3.9	+1.5	+2.2	+3	+1.9	-
Acc	64%	45%	68%	90%	84%	81%	80%	71%	59%	83%	43%	68%	59%	64%	68%	61%	67%	-

February 2024 Hereford BREEDPLAN

PIONEER

\$40

011HP01040 TH 745A 358C Pioneer 297F



- ▲ Complete package of CE, growth & carcass
- ▲ Well balanced, heavy muscled with sound structure
- ▲ Outcross pedigree

TH 223 711 Victor 755T
TH 89T 755T Stockman 475Z
TH 16G 20N Gemini 89T

TH 403A 475Z Pioneer 358C ET

TH 22R 16S Lambeau 17Y
TH 71U 17Y Rita 403A
TH 7N 45P Rita 71U

SHF Rib Eye M326 R117
Boyd Worldwide 9050 ET
MSU TCF Rachael 22S ET

Rangeline 11Y Miss World 745A

TH 122 711 Victor 719T
Rangeline 60S Tear Drop 11Y
Rangeline 4G Tear Drop 60S

BULL INFORMATION	
Reg #	OSA43920548AHR
Birthdate	17/03/2018
Genetic Testing	IEF DLF HYF MSUDF

SELECTION INDEX	Southern Self-Replacing Index (\$)	Northern Self-Replacing Index (\$)	Southern Baldy Maternal Index (\$)	Northern Baldy Maternal Index (\$)
Index Value	\$146	\$140	\$153	\$110
Breed Average	\$143	\$129	\$146	\$107

	CED %	CEDtrs %	GL days	BW kg	200 days	400 days	600 days	MCW kg	Milk kg	SS cm	DTC days	CWT kg	EMA sq.cm	RIB F mm	RUMPF mm	RBV %	IMF %	D
EBV	+4.9	-	-2.4	+2.0	+37	+59	+74	+51	+18	+2.4	-3.4	+49	+5.0	+2.2	+2.1	+4	+2	-
Acc	27%	-%	58%	79%	81%	80%	77%	74%	75%	75%	31%	69%	58%	67%	60%	48%	63%	-

February 2024 Hereford BREEDPLAN

DCR MR SILVER HAND F564 011CH01040

Reg # M917050
Birthdate 13/04/2018



- ▲ Modest BW with strong performance
- ▲ Outstanding carcass merit with CW, REA, MARB & TSI in top 10%

NEW

IQCR Silver Gun Y31P
WCF MR Silver Gun 467
 WCF Miss Fastrack 012
 DCR MR U148 Ranch Hand Z196PLD
DCR MS Ranch Hand B261
 DCR MS Magic X379

\$35

	CED	BW	WW	YW	MILK	MCE	MTL	SC	UDDR	TEAT	CW	REA	FAT	MARB	TSI
EPD	+10.9	-2.6	+75	+139	+24	+9.3	+62	+1.5	+1.19	+1.21	+43	+1.16	+0.26	+0.36	+289.12
Acc	.35	.60	.47	.47	.23	.22	.31	.35	.25	.25	.20	.20	.18	.15	
Perc	50	25	15	8	50	50	25	15	25	15	2	2	90	3	4

AICA March 2024

LT VENTURE 3198 011CH01028

Reg # 0AUJ5612E
Birthdate 11/03/2013



- ▲ Strong maternal line out of a proven dam
- ▲ Use Venture for feet improvement, excellent temperament & body type

LT Western Edge 4057 Pld
LT Stagecoach 8068 Pld
 LT Lady Macbeth 2131 PI
 LT Easy Pro 1158 Pld
LT Ballet 9219 Polled
 LT Ballet 6233

\$50

SELECTION INDEX	Domestic Terminal Index (\$)	Northern Maternal Index (\$)
Index Value	\$36	\$96
Breed Average	\$23	\$37

	CED	CE Dtrs	GL	BW	200D	400D	600D	MCW	Milk	SS	CW	EMA	Rib	Rump	RBV %	IMF %
EBV	+8.1	+3.3	-2.8	-4.2	+13	+40	+44	+19	+24	+2.8	+36	+1.1	+3.9	+5	-3.3	+5
Acc	90%	83%	98%	97%	96%	96%	95%	92%	93%	95%	88%	81%	89%	88%	83%	80%

February 2024 Australasian Charolais Single-Step BREEDPLAN

Cedarlea LOW RIDER 105F 011CH01027

Reg # PMC744233
Birthdate 06/02/2018



- ▲ Calving ease sire with strong maternal traits
- ▲ Moderate framed individual with muscle & mass
- ▲ Polled purebred

LT Ledger 0332P
Circle Cee Legend 307A
 Circle Cee Stunning 125Y
 CSS Sir Gridmaker 2W
Cedarlea Yoshi 71Y
 Cedarlea Ubee A Roper 66U

\$30

	CED	BW	WW	YW	MILK	MCE	MTL	SC	UDDR	TEAT	CW	REA	FAT	MARB	TSI
EPD	+10.1	-4.8	+38	+71	+29	+5.4	+48	+7	+1.26	+1.21	+8	+0.83	+0.048	+0.03	+219.32
Acc	.48	.71	.48	.42	.28	.28	.35	.18	.08	.08	.16	.15	.12	.11	
Perc	60	6	100	100	25	80	80	75	15	15	80	20	100	75	100

AICA March 2024

Blue Spark **RAPTOR** BLUE SPARK SPECKLE PARK **\$35**

Reg # BSP R01
 Birthdate 15/02/2020
 Genetic Test RGF NT821F LeptinT/T

SPECKLE PARK



- ▲ Excellent structure & docility
- ▲ Great calving ease, short gestation, curve bending growth
- ▲ High demand sire

Semex Alliance Yogi Goes Redneck

Johner Stock Farm Trade Secret
 Monnery River 7W

Codiak Eagle GNK 46Y
 Blue Spark H9 Exquisite P03
 Botta of Conanga 0583

	GL	BW	200D	400D	600D	MCW	Milk	SS	CW	EMA	Rib	Rump	RBY %	IMF %
EBV	-3.6	+4	+23	+38	+40	+39	+1	+9	+27	0	+5	+6	-6	+2
Acc	61%	72%	69%	66%	65%	55%	55%	67%	56%	47%	56%	55%	52%	51%

March 2024 Speckle Park Single-Step BREEDPLAN

Wattle Grove **PLAYER** P201 WATTLE GROVE SPECKLE PARK **\$30**

Reg # WGS P201
 Birthdate 21/05/2018
 Genetic Test RGF NT821F



- ▲ Moderate birth weight with a big time growth spread
- ▲ Clean fronted bull with plenty of depth and style
- ▲ Pedigree stacked with performance

Zoro Matters 1Z

Avery Creek Banjo 01B
 Tumbleweed Acres Lulu 18Y

Wattle Grove Almighty E41
 Wattle Grove E41 Stardust J33
 Wattle Grove Star Dust E2

	GL	BW	200D	400D	600D	MCW	Milk	SS	CW	EMA	Rib	Rump	RBY %	IMF %
EBV	+5	+3.4	+27	+35	+48	+49	+6	-.3	+27	-.1	-.7	-1.2	+1	+3
Acc	64%	85%	82%	79%	77%	63%	51%	66%	66%	48%	62%	61%	57%	55%

March 2024 Speckle Park Single-Step BREEDPLAN

Marblen **JESSE** 10J 011SK00001 **\$25**

Reg # MBN 10J
 Birthdate 15/03/2021
 Genetic Test RGF NT821F



- ▲ Short gestation with moderate birthweight
- ▲ Clean fronted bull with extra definition right throughout

Caja Zeppelin 1B

INC Six Gun 428F
 Upto Specs Willa 17W

Codiak Oh My Gosh GNK 60A
 River Hill 60A Fancy Lady 96F
 River Hill 54Z Fancy Free 93B

	GL	BW	200D	400D	600D	MCW	Milk	SS	CW	EMA	Rib	Rump	RBY %	IMF %
EBV	-.9	+1.9	+17	+19	+31	+42	+5	-.6	+16	+2	-.1	-.1	+1	-.1
Acc	44%	59%	57%	54%	54%	44%	42%	49%	43%	35%	46%	44%	40%	40%

March 2024 Speckle Park Single-Step BREEDPLAN

Australian Progeny



Baldrige 38 Special at Glatz Black Angus



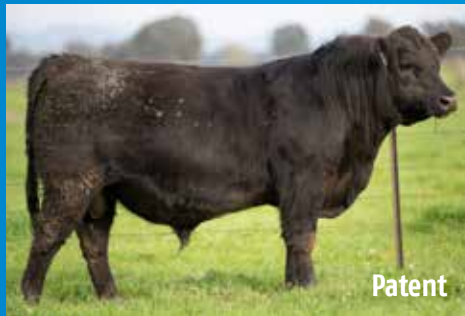
Woodhill Patent at DSK Angus



Ellingson Three Rivers at Granite Ridge Angus



Baldrige 38 Special at Alamy Angus



Woodhill Patent at Araluen Angus



Ellingson Three Rivers at Merridale Angus

Alta Genetics Australia

Melbourne Head Office (03) 8336 1458
info.au@altagenetics.com | australia.altagenetics.com/beef

TONY SIMPSON

Beef Programs Manager | 0427 341 458 | tony.simpson@altagenetics.com

KIRRILY LUMSDEN

Beef Sales and Support | 0428 529 275 | kirrily.lumsden@altagenetics.com

ANDREW MEDHURST

Regional Sales | 0459 957 169 | andrew.medhurst@altagenetics.com

BRETT SWEETNAM

Regional Sales | 0491 376 172 | brett.sweetnam@altagenetics.com