

# Alta Sire Directory

Autumn 2024



Alta  
**FUTURE  
HERD  
INSIDE**



## CUTIE'S FAMILY TREE

**Marion Dale Camelia 25th VG87 3\***  
10/10/1975  
(Ingolston Patrick Marshall GP)



**Ingoldale Carnation VG85 STP 16\***  
BPI -381 14/11/1981  
(Bellshill Model Count VG)



**Ingoldale S.B. Cutie-ET VG89 5\***  
BPI -102 26/01/1987  
(Hanoverhill Starbuck EX)



**Ingoldale SC Cutie- ET VG85**  
BPI -176 09/08/1993  
(A Hanover-Hill-SS Clyde)



**Strathspey Outside Cutie**  
BPI -122 02/08/2000  
(Comestar Outside EX)



**Strathspey Modesto Cutie**  
BPI -168 11/07/2005  
(Sikkema-Star-W Modesto)



**Strathspey Bolton Cutie VG86**  
BPI -71 03/03/2009  
(Sandy-Valley Bolton EX)



**Gleestar Ernesto Cutie EX-90-4E**  
BPI +75 03/05/2011  
(Probstland Ernesto)



**Gleestar Uno Cutie VG86**  
BPI +147 27/07/2014  
(Amighetti Numero Uno)



**Gleestar Quantum Cutie 211**  
BPI +247 12/03/2018  
(De-Su 13181 Quantum)



**Gleestar Kenobi Cutie 318 GP84**  
BPI +362 09/03/2020  
(De-Su 14222 Kenobi)

# Coin Maker's maternal line dates back to the 1800's!



**Gleestar Ernesto Cutie EX-90-4E**

*Cutie 318 Maternal Great Grand Dam*



**Gleestar Kenobi Cutie 323**

*Cutie 318 Paternal sister &  
Maternal Grand daughter of Gleestar Ernesto Cutie*



Direct from Alta's

# DOMESTIC SIRE PROGRAM



## Gleestar COIN MAKER

Sire: Westcoast Rocknroll-ET  
 Dam: Gleestar Kenobi Cutie 318  
 MGS: De-Su 13181 Quantum-ET

NASIS: 05FFV25 | Reg: AUSM000H02217775  
 DOB: 12.03.2022 | A2A2 | BB | 95% Black

AUS Genetic Evaluations 12/2023



\$25 +gst  
 \$58 sexed +gst

<b>BPI</b>	<b>476</b>	<b>HWI</b>	<b>461</b>	<b>SI</b>	<b>820</b>
------------	------------	------------	------------	-----------	------------

**TYPE** 0 dtrs / 0 herds Rel. 61% (ABV 12/2023)

Overall Type	<b>105</b>	Rear Set	96
Mammary System	<b>104</b>	Rear Leg Rear View	104
Feet & Legs	103	Udder Depth	104
Rump	100	Fore Attachment	105
Dairy Strength	101	Rear Attachment Height	103
Stature	102	Rear Attachment Width	102
Muzzle Width	<b>105</b>	Centre Ligament	103
Chest Width	<b>110</b>	Teat Placement (front)	102
Pin Width	102	Teat Placement (rear)	99
Pin Set	99	Teat Length	<b>106</b>
Foot Angle	102	Loin Strength	98

<b>PRODUCTION</b>	0 dtrs / 0 herds	Rel. 77%	(ABV 12/2023)
Milk	44 L	ASI	212
Fat	35 kg		<b>+0.48 %</b>
Protein	21 kg		<b>+0.38 %</b>

<b>HEALTH</b>			
Cell Count	178	66 %R	
Survival	110	54 %R	
Dtr. Fertility	<b>111</b>	53 %R	
Calving Ease	<b>102</b>	70 %R	
Gestation Length	<b>-3</b>	62 %R	

<b>WORKABILITIES</b>	0 dtrs / 0 herds	Rel. 65%
Milking Speed		<b>100</b>
Temperament		<b>101</b>
Likability		<b>103</b>

"Coin Maker is a very unique sire, to me he ticks all of the boxes for traits that the commercial farmer is after. He is silky black, A2, BB, great components & fertility. His type traits are a feature, a chest width of 110, muzzle width of 105, teat length of 106 - traits which I believe the Australian Dairy Industry can certainly benefit from".

Jonathon Gleeson



# AltaYOUNBETCHA

011H016082

PEAK ALTAYOUNBETCHA-ET  
AltaWHEELHOUSE X SOLUTION  
HO840M003236692425 | DOB 7/15/2021  
aAa 432 | DMS 135,345 | EFI 12.0 %  
CDCB & HA-USA Genetic Evaluations 12/2023

\$50 +gst  
\$60 sexed +gst



# AltaBRIMSTONE

011H016031

PEAK ALTABRIMSTONE-ET  
AltaWHEELHOUSE X PURSUIT  
HO840M003235932779 | DOB 7/6/2021  
aAa 342 | DMS 234,246 | EFI 11.5 %  
CDCB & HA-USA Genetic Evaluations 12/2023

\$50 +gst  
\$60 sexed +gst



<b>TPI</b>	<b>3007</b>	<b>NM\$</b>	<b>1075</b>	<b>BPI</b>	<b>466</b>
------------	-------------	-------------	-------------	------------	------------

**PRODUCTION** (0 Daughters in 0 Herds) 80% Rel

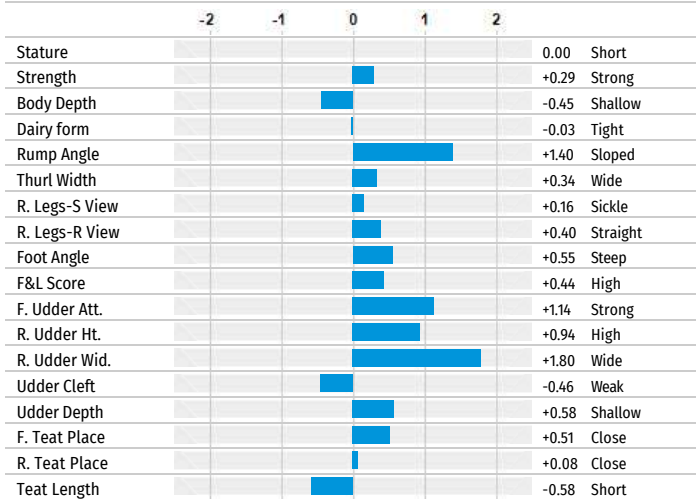
Milk	952 Lbs	Gestation Length	-4
Protein	57 Lbs 0.09%	FM\$	\$933
Fat	97 Lbs 0.21%	GM\$	\$1020

**HEALTH**

PL	6.2	DPR	0.1	SCS	2.72
C-Liv	+3.3	CCR	1.5	MAST	3.6
H-Liv	+0.6	HCR	3.6	METR	2.1
DWP\$	\$1230	DA	0.9	KETO	1.7
WT\$	\$214	RP	-0.1	MFEV	0.1%

**CONFORMATION** (Based on 0 Daughters in 0 Herds)

PTAT	0.66	UDC	0.94
BWC	0.24	FLC	0.47



**CALVING TRAITS**

Sire Calving Ease	2.0	81% Rel	Sire stillbirth	5.9	69% Rel
Dtr Calving Ease	1.3	70% Rel	Dtr stillbirth	3.4	64% Rel

<b>TPI</b>	<b>2986</b>	<b>NM\$</b>	<b>1009</b>	<b>BPI</b>	<b>455</b>
------------	-------------	-------------	-------------	------------	------------

**PRODUCTION** (0 Daughters in 0 Herds) 80% Rel

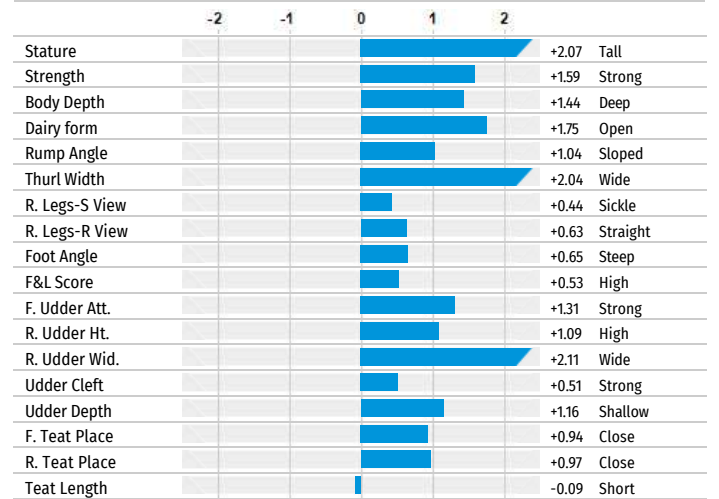
Milk	1163 Lbs	Gestation Length	-4
Protein	66 Lbs 0.10%	FM\$	\$861
Fat	107 Lbs 0.21%	GM\$	\$953

**HEALTH**

PL	4.9	DPR	-0.9	SCS	2.92
C-Liv	0.0	CCR	0.8	MAST	2.3
H-Liv	+0.4	HCR	3.6	METR	1.0
DWP\$	\$1067	DA	0.5	KETO	1.2
WT\$	\$75	RP	0.0	MFEV	0.0%

**CONFORMATION** (Based on 0 Daughters in 0 Herds)

PTAT	1.42	UDC	0.93
BWC	1.26	FLC	0.12



**CALVING TRAITS**

Sire Calving Ease	1.8	81% Rel	Sire stillbirth	6.4	67% Rel
Dtr Calving Ease	1.5	70% Rel	Dtr stillbirth	4.4	64% Rel

# AltaMO

CHERRY-ACRES PEAK ALTAMO-ET  
AltaOVERTAKE X GAMEDAY  
HO840M00325198090 | DOB 10/25/2022  
aAa 423 | DMS 126,561 | EFI 12.3 %  
CDCB & HA-USA Genetic Evaluations 12/2023

011HO16676

**NEW**

\$50 +gst  
\$60 sexed +gst



<b>TPI</b>	<b>3200</b>	<b>NM\$</b>	<b>1142</b>	<b>BPI</b>	<b>397</b>
------------	-------------	-------------	-------------	------------	------------

**PRODUCTION** (0 Daughters in 0 Herds) 79% Rel

Milk	763 Lbs	Gestation Length	-5
Protein	53 Lbs 0.10%	FM\$	\$990
Fat	122 Lbs 0.32%	GM\$	\$1116

**HEALTH**

PL	6.4	DPR	1.5	SCS	2.64
C-Liv	+3.6	CCR	2.4	MAST	2.5
H-Liv	+0.9	HCR	1.4	METR	2.7
DWP\$	\$1174	DA	0.6	KETO	2.4
WT\$	\$91	RP	0.6	MFEV	0.0%

**CONFORMATION** (Based on 0 Daughters in 0 Herds)

PTAT	1.42	UDC	2.22
BWC	0.24	FLC	0.41

	-2	-1	0	1	2	
Stature						+0.88 Tall
Strength						+0.03 Strong
Body Depth						-0.40 Shallow
Dairy form						+0.30 Open
Rump Angle						+0.61 Sloped
Thurl Width						+1.09 Wide
R. Legs-S View						-0.68 Posty
R. Legs-R View						+0.28 Straight
Foot Angle						+1.12 Steep
F&L Score						+0.62 High
F. Udder Att.						+2.66 Strong
R. Udder Ht.						+2.38 High
R. Udder Wid.						+2.36 Wide
Udder Cleft						+1.20 Strong
Udder Depth						+2.53 Shallow
F. Teat Place						+1.56 Close
R. Teat Place						+1.53 Close
Teat Length						-0.70 Short

**CALVING TRAITS**

Sire Calving Ease	2.4	61% Rel	Sire stillbirth	6.3	57% Rel
Dtr Calving Ease	2.0	57% Rel	Dtr stillbirth	4.2	56% Rel

# AltaHU

COOKIECUTTER PEAK ALTAHU-ET  
ZAPPY X TAOS  
HO840M003251555501 | DOB 7/20/2022  
aAa 246 | DMS 234,345 | EFI 12.1 %  
CDCB & HA-USA Genetic Evaluations 12/2023

011HO16762

**NEW**

\$50 +gst  
\$60 sexed +gst



<b>TPI</b>	<b>3155</b>	<b>NM\$</b>	<b>1093</b>	<b>BPI</b>	<b>420</b>
------------	-------------	-------------	-------------	------------	------------

**PRODUCTION** (0 Daughters in 0 Herds) 79% Rel

Milk	1726 Lbs	Gestation Length	-5
Protein	80 Lbs 0.09%	FM\$	\$952
Fat	116 Lbs 0.17%	GM\$	\$1063

**HEALTH**

PL	5.0	DPR	0.5	SCS	2.72
C-Liv	+0.8	CCR	2.3	MAST	2.5
H-Liv	+0.7	HCR	1.6	METR	2.4
DWP\$	\$1107	DA	0.2	KETO	1.7
WT\$	\$4	RP	0.0	MFEV	0.1%

**CONFORMATION** (Based on 0 Daughters in 0 Herds)

PTAT	1.53	UDC	0.43
BWC	1.16	FLC	0.79

	-2	-1	0	1	2	
Stature						+2.61 Tall
Strength						+1.32 Strong
Body Depth						+1.25 Deep
Dairy form						+1.43 Open
Rump Angle						+0.57 Sloped
Thurl Width						+1.06 Wide
R. Legs-S View						-0.31 Posty
R. Legs-R View						+0.98 Straight
Foot Angle						+1.59 Steep
F&L Score						+1.35 High
F. Udder Att.						+1.20 Strong
R. Udder Ht.						+0.85 High
R. Udder Wid.						+1.06 Wide
Udder Cleft						+0.32 Strong
Udder Depth						+1.19 Shallow
F. Teat Place						+0.61 Close
R. Teat Place						+0.52 Close
Teat Length						+0.25 Long

**CALVING TRAITS**

Sire Calving Ease	2.3	62% Rel	Sire stillbirth	5.7	58% Rel
Dtr Calving Ease	1.9	57% Rel	Dtr stillbirth	4.4	55% Rel



# AltaSULIEN

PEAK ALTASULIEN-ET  
PURSUIT X AltaROBSON  
HO840M003209641528 | DOB 10/26/2019  
aAa 243 | DMS 234,345 | EFI 11.3 %  
CDCB & HA-USA Genetic Evaluations 12/2023

011H015430

\$35 +gst  
\$60 sexed +gst



G-STAR CONCEPT PLUS DxD CONCEPT PLUS 511

Alta 511 Type

TPI	2944	NM\$	950	BPI	469
-----	------	------	-----	-----	-----

### PRODUCTION (0 Daughters in 0 Herds) 81% Rel

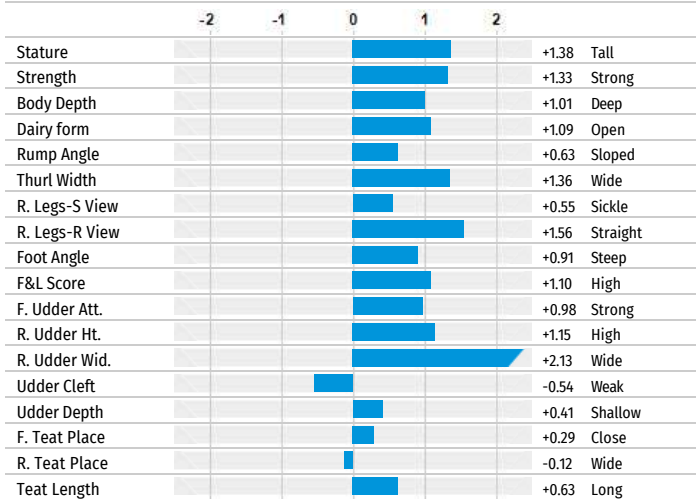
Milk	664 Lbs	Gestation Length	-4
Protein	57 Lbs 0.13%	FM\$	\$769
Fat	91 Lbs 0.23%	GM\$	\$887

### HEALTH

PL	5.5	DPR	-0.4	SCS	2.76
C-Liv	+1.9	CCR	0.7	MAST	4.5
H-Liv	+0.2	HCR	3.5	METR	0.7
DWP\$	\$1046	DA	0.6	KETO	2.2
WT\$	\$131	RP	-0.2	MFEV	-0.1%

### CONFORMATION (Based on 0 Daughters in 0 Herds)

PTAT	1.52	UDC	0.65
BWC	1.07	FLC	0.96



### CALVING TRAITS

Sire Calving Ease	2.1	97% Rel	Sire stillbirth	6.7	94% Rel
Dtr Calving Ease	2.2	70% Rel	Dtr stillbirth	5.6	64% Rel

# AltaSTARSKY

PEAK ALTASTARSKY-ET  
AltaHAILED X PURSUIT  
HO840M003229908061 | DOB 3/22/2021  
aAa 324 | DMS 561,561 | EFI 11.1 %  
CDCB & HA-USA Genetic Evaluations 12/2023

011H016058

\$28 +gst  
\$60 sexed +gst



G-STAR CONCEPT PLUS DxD CONCEPT PLUS 511

Alta 511 A2 Ce Type

TPI	2927	NM\$	878	BPI	407
-----	------	------	-----	-----	-----

### PRODUCTION (0 Daughters in 0 Herds) 81% Rel

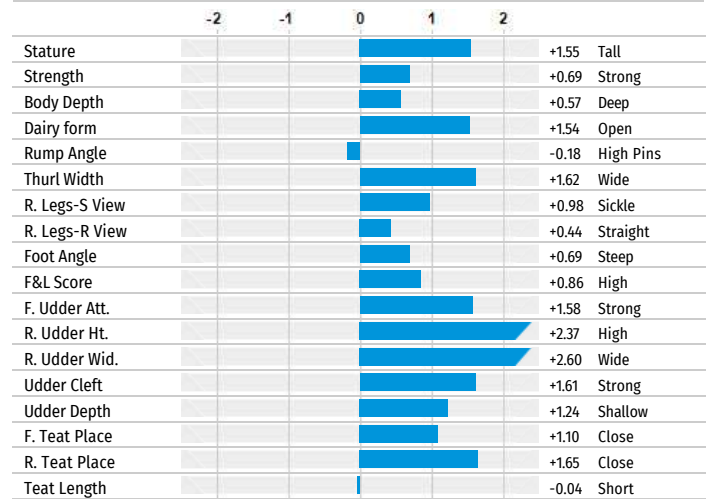
Milk	1094 Lbs	Gestation Length	-6
Protein	62 Lbs 0.10%	FM\$	\$741
Fat	104 Lbs 0.21%	GM\$	\$826

### HEALTH

PL	2.9	DPR	-1.7	SCS	2.98
C-Liv	-0.6	CCR	-1.6	MAST	2.2
H-Liv	+0.8	HCR	0.7	METR	2.4
DWP\$	\$946	DA	0.4	KETO	2.4
WT\$	\$78	RP	0.0	MFEV	0.1%

### CONFORMATION (Based on 0 Daughters in 0 Herds)

PTAT	1.60	UDC	1.67
BWC	0.45	FLC	0.45



### CALVING TRAITS

Sire Calving Ease	1.6	84% Rel	Sire stillbirth	6.2	67% Rel
Dtr Calving Ease	1.4	70% Rel	Dtr stillbirth	3.9	64% Rel

# AltaPIZZAZZ

PEAK ALTAPIZZAZZ-ET  
AltaOVERTAKE X INCREDIBLE  
HO840M003251555560 | DOB 9/12/2022  
aAa 432 | DMS 246,126 | EFI 11.5 %  
CDCB & HA-USA Genetic Evaluations 12/2023

011H016836

**NEW**

\$50 +gst  
\$60 sexed +gst



Alta 511 A2 Ge BB Type

TPI	3167	NM\$	1111	BPI	366
-----	------	------	------	-----	-----

## PRODUCTION (0 Daughters in 0 Herds) 79% Rel

Milk	827 Lbs	Gestation Length	-5
Protein	61 Lbs 0.12%	FM\$	\$931
Fat	112 Lbs 0.28%	GM\$	\$1056

## HEALTH

PL	6.5	DPR	0.5	SCS	2.68
C-Liv	+2.7	CCR	2.0	MAST	2.3
H-Liv	+0.8	HCR	2.0	METR	1.9
DWP\$	\$1134	DA	1.0	KETO	1.9
WT\$	\$129	RP	0.1	MFEV	-0.1%

## CONFORMATION (Based on 0 Daughters in 0 Herds)

PTAT	1.70	UDC	2.05
BWC	0.61	FLC	0.61

	-2	-1	0	1	2	
Stature						+0.72 Tall
Strength						+0.61 Strong
Body Depth						+0.21 Deep
Dairy form						+0.59 Open
Rump Angle						+0.38 Sloped
Thurl Width						+1.57 Wide
R. Legs-S View						-0.02 Posty
R. Legs-R View						+0.54 Straight
Foot Angle						+0.84 Steep
F&L Score						+0.76 High
F. Udder Att.						+2.53 Strong
R. Udder Ht.						+2.26 High
R. Udder Wid.						+2.36 Wide
Udder Cleft						+0.90 Strong
Udder Depth						+1.94 Shallow
F. Teat Place						+1.10 Close
R. Teat Place						+0.99 Close
Teat Length						+0.32 Long

## CALVING TRAITS

Sire Calving Ease	1.7	61% Rel	Sire stillbirth	5.6	57% Rel
Dtr Calving Ease	1.8	57% Rel	Dtr stillbirth	4.0	55% Rel

# AltaOVERTAKE

LADYS-MANOR ALTAOVERTAKE-ET  
AltaZAZZLE X GRANITE  
HO840M003214324409 | DOB 11/3/2020  
aAa 342 | DMS 246,126 | EFI 12.2 %  
CDCB & HA-USA Genetic Evaluations 12/2023

011H015830

\$48 +gst  
\$60 sexed +gst



Alta 511 Ge BB Type

TPI	3154	NM\$	1062	BPI	431
-----	------	------	------	-----	-----

## PRODUCTION (0 Daughters in 0 Herds) 83% Rel

Milk	828 Lbs	Gestation Length	-6
Protein	58 Lbs 0.11%	FM\$	\$897
Fat	107 Lbs 0.26%	GM\$	\$1031

## HEALTH

PL	6.0	DPR	1.2	SCS	2.67
C-Liv	+2.5	CCR	1.9	MAST	2.8
H-Liv	+0.8	HCR	1.1	METR	2.9
DWP\$	\$1112	DA	0.8	KETO	1.7
WT\$	\$136	RP	0.7	MFEV	0.1%

## CONFORMATION (Based on 0 Daughters in 0 Herds)

PTAT	1.62	UDC	2.09
BWC	0.36	FLC	1.16

	-2	-1	0	1	2	
Stature						+0.33 Tall
Strength						+0.26 Strong
Body Depth						-0.24 Shallow
Dairy form						+0.19 Open
Rump Angle						+0.03 Sloped
Thurl Width						+1.19 Wide
R. Legs-S View						-1.15 Posty
R. Legs-R View						+1.09 Straight
Foot Angle						+1.31 Steep
F&L Score						+1.19 High
F. Udder Att.						+2.38 Strong
R. Udder Ht.						+2.45 High
R. Udder Wid.						+2.57 Wide
Udder Cleft						+0.88 Strong
Udder Depth						+1.64 Shallow
F. Teat Place						+0.97 Close
R. Teat Place						+0.97 Close
Teat Length						+0.89 Long

## CALVING TRAITS

Sire Calving Ease	2.0	85% Rel	Sire stillbirth	5.4	78% Rel
Dtr Calving Ease	1.5	70% Rel	Dtr stillbirth	4.0	64% Rel

# AltaCAIDEN

011H016471

PEAK ALTACAIDEN-ET  
DZUNDA X TROPIC  
HO840M003240482316 | DOB 2/15/2022  
aAa 243 | DMS 126,561 | EFI 11.4 %  
CDCB & HA-USA Genetic Evaluations 12/2023

\$28 +gst  
\$50 sexed +gst



TPI	2875	NM\$	666	BPI	364
-----	------	------	-----	-----	-----

## PRODUCTION (0 Daughters in 0 Herds) 79% Rel

Milk	850 Lbs	Gestation Length	-5
Protein	45 Lbs 0.06%	FM\$	\$572
Fat	62 Lbs 0.10%	GM\$	\$638

## HEALTH

PL	3.6	DPR	0.3	SCS	2.90
C-Liv	+0.4	CCR	0.7	MAST	3.2
H-Liv	+0.9	HCR	1.9	METR	2.0
DWP\$	\$744	DA	0.0	KETO	1.1
WT\$	\$114	RP	0.3	MFEV	0.1%

## CONFORMATION (Based on 0 Daughters in 0 Herds)

PTAT	3.12	UDC	2.74
BWC	1.16	FLC	1.33

	-2	-1	0	1	2	
Stature						+3.23 Tall
Strength						+1.14 Strong
Body Depth						+1.16 Deep
Dairy form						+1.62 Open
Rump Angle						-0.08 High Pins
Thurl Width						+1.58 Wide
R. Legs-S View						-0.15 Posty
R. Legs-R View						+1.76 Straight
Foot Angle						+2.52 Steep
F&L Score						+1.91 High
F. Udder Att.						+3.96 Strong
R. Udder Ht.						+3.18 High
R. Udder Wid.						+2.95 Wide
Udder Cleft						+2.73 Strong
Udder Depth						+3.85 Shallow
F. Teat Place						+2.26 Close
R. Teat Place						+2.56 Close
Teat Length						-0.61 Short

## CALVING TRAITS

Sire Calving Ease	1.4	60% Rel	Sire stillbirth	5.9	56% Rel
Dtr Calving Ease	1.2	58% Rel	Dtr stillbirth	4.5	56% Rel

# AltaPARSONS

011H016200

PEAK ALTAPARSONS-ET  
AltaWHEELHOUSE X PURSUIT  
HO840M003229908219 | DOB 6/18/2021  
aAa 324 | DMS 123,234 | EFI 12.2 %  
CDCB & HA-USA Genetic Evaluations 12/2023

\$25 +gst  
\$50 sexed +gst



TPI	2968	NM\$	895	BPI	470
-----	------	------	-----	-----	-----

## PRODUCTION (0 Daughters in 0 Herds) 80% Rel

Milk	536 Lbs	Gestation Length	-3
Protein	41 Lbs 0.09%	FM\$	\$773
Fat	94 Lbs 0.26%	GM\$	\$864

## HEALTH

PL	5.1	DPR	0.6	SCS	2.83
C-Liv	+2.8	CCR	1.9	MAST	2.0
H-Liv	+0.4	HCR	4.9	METR	1.2
DWP\$	\$906	DA	0.7	KETO	1.8
WT\$	\$107	RP	-0.2	MFEV	-0.1%

## CONFORMATION (Based on 0 Daughters in 0 Herds)

PTAT	1.73	UDC	2.00
BWC	0.54	FLC	0.87

	-2	-1	0	1	2	
Stature						+0.95 Tall
Strength						+0.82 Strong
Body Depth						+0.48 Deep
Dairy form						+1.16 Open
Rump Angle						+1.13 Sloped
Thurl Width						+1.39 Wide
R. Legs-S View						+0.02 Sickle
R. Legs-R View						+0.93 Straight
Foot Angle						+1.00 Steep
F&L Score						+1.02 High
F. Udder Att.						+2.26 Strong
R. Udder Ht.						+2.25 High
R. Udder Wid.						+3.06 Wide
Udder Cleft						+0.34 Strong
Udder Depth						+2.03 Shallow
F. Teat Place						+0.57 Close
R. Teat Place						+0.22 Close
Teat Length						-0.32 Short

## CALVING TRAITS

Sire Calving Ease	2.1	74% Rel	Sire stillbirth	6.8	64% Rel
Dtr Calving Ease	1.6	70% Rel	Dtr stillbirth	3.9	64% Rel



# AltaGRAPHITE

PEAK ALTAGRAPHITE-ET  
AltaEXQUISITE X AltaJUMP CUT  
HO840M003252198026 | DOB 10/8/2022  
aAa 423 | DMS 126,246 | EFI 11.7 %  
CDCB & HA-USA Genetic Evaluations 12/2023

011HO16656

**NEW**

\$50 +gst  
\$60 sexed +gst



<b>TPI</b>	<b>3129</b>	<b>NM\$</b>	<b>1165</b>	<b>BPI</b>	<b>416</b>
------------	-------------	-------------	-------------	------------	------------

**PRODUCTION** (0 Daughters in 0 Herds) 79% Rel

Milk	666 Lbs		Gestation Length	-5
Protein	60 Lbs	0.14%	FM\$	\$964
Fat	131 Lbs	0.37%	GM\$	\$1116

**HEALTH**

PL	5.8	DPR	-0.1	SCS	2.56
C-Liv	+1.8	CCR	1.7	MAST	5.0
H-Liv	+1.0	HCR	1.2	METR	1.2
DWP\$	\$1269	DA	0.5	KETO	1.9
WT\$	\$169	RP	-0.6	MFEV	-0.1%

**CONFORMATION** (Based on 0 Daughters in 0 Herds)

PTAT	1.06	UDC	0.87
BWC	0.30	FLC	0.06

	-2	-1	0	1	2	
Stature						+1.10 Tall
Strength						+0.58 Strong
Body Depth						+0.38 Deep
Dairy form						+1.05 Open
Rump Angle						+0.60 Sloped
Thurl Width						+0.54 Wide
R. Legs-S View						-1.15 Posty
R. Legs-R View						+0.08 Straight
Foot Angle						+0.99 Steep
F&L Score						+0.34 High
F. Udder Att.						+1.13 Strong
R. Udder Ht.						+1.62 High
R. Udder Wid.						+1.81 Wide
Udder Cleft						-0.06 Weak
Udder Depth						+0.73 Shallow
F. Teat Place						-0.12 Wide
R. Teat Place						-0.16 Wide
Teat Length						+1.01 Long

**CALVING TRAITS**

Sire Calving Ease	2.1	62% Rel	Sire stillbirth	5.4	59% Rel
Dtr Calving Ease	2.0	57% Rel	Dtr stillbirth	4.6	55% Rel

# AltaGAINES

PEAK ALTAGAINES-ET  
AltaZAZZLE X POSITIVE  
HO840M003215425484 | DOB 5/19/2020  
aAa 423 | DMS 123,135 | EFI 11.2 %  
CDCB & HA-USA Genetic Evaluations 12/2023

011HO15789

\$35 +gst  
\$60 sexed +gst



<b>TPI</b>	<b>2950</b>	<b>NM\$</b>	<b>911</b>	<b>BPI</b>	<b>380</b>
------------	-------------	-------------	------------	------------	------------

**PRODUCTION** (0 Daughters in 0 Herds) 81% Rel

Milk	1430 Lbs		Gestation Length	-8
Protein	63 Lbs	0.06%	FM\$	\$814
Fat	93 Lbs	0.13%	GM\$	\$885

**HEALTH**

PL	4.0	DPR	0.1	SCS	2.91
C-Liv	+2.2	CCR	0.9	MAST	1.8
H-Liv	+0.8	HCR	0.2	METR	2.3
DWP\$	\$849	DA	0.3	KETO	1.3
WT\$	\$37	RP	0.4	MFEV	-0.1%

**CONFORMATION** (Based on 0 Daughters in 0 Herds)

PTAT	1.59	UDC	1.54
BWC	0.51	FLC	0.46

	-2	-1	0	1	2	
Stature						+1.07 Tall
Strength						+0.75 Strong
Body Depth						+0.56 Deep
Dairy form						+1.03 Open
Rump Angle						+1.20 Sloped
Thurl Width						+0.95 Wide
R. Legs-S View						-0.99 Posty
R. Legs-R View						+0.37 Straight
Foot Angle						+0.99 Steep
F&L Score						+0.74 High
F. Udder Att.						+1.95 Strong
R. Udder Ht.						+2.12 High
R. Udder Wid.						+2.70 Wide
Udder Cleft						+0.25 Strong
Udder Depth						+1.01 Shallow
F. Teat Place						+0.45 Close
R. Teat Place						+0.25 Close
Teat Length						+0.39 Long

**CALVING TRAITS**

Sire Calving Ease	1.7	91% Rel	Sire stillbirth	5.5	82% Rel
Dtr Calving Ease	1.6	70% Rel	Dtr stillbirth	5.4	64% Rel

# AltaREFINE-RED

011H015682

KOEPON ALTAREFINE-RED-ET  
AltaTOP-RED X SALVATORE RC  
HONLDM000597117020 | DOB 6/23/2020  
aAa 243 | DMS 126,123 | EFI 11.8 %  
CDCB & HA-USA Genetic Evaluations 12/2023

\$28 +gst



# AltaKAMARA-RED

011H016227

KOEPON ALTAKAMARA-RED-ET  
RUBELS RED X AltaALTUVE\*RC  
HONLDM000577621479 | DOB 7/1/2021  
aAa 342516 | EFI 12.0 %  
CDCB & HA-USA Genetic Evaluations 12/2023

\$55 sexed +gst



<b>TPI</b>	<b>2721</b>	<b>NM\$</b>	<b>738</b>	<b>BPI</b>	<b>344</b>
------------	-------------	-------------	------------	------------	------------

**PRODUCTION** (0 Daughters in 0 Herds) 82% Rel

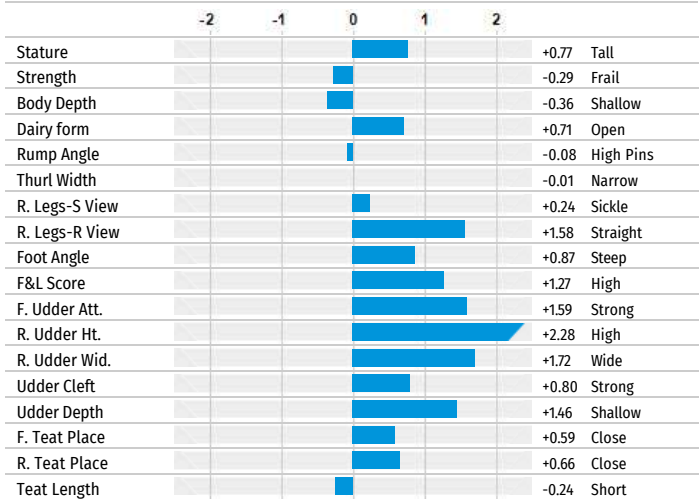
Milk	1325 Lbs	Gestation Length	-4
Protein	42 Lbs 0.00%	FM\$	\$718
Fat	44 Lbs -0.02%	GM\$	\$666

**HEALTH**

PL	6.2	DPR	0.3	SCS	2.71
C-Liv	+2.3	CCR	0.3	MAST	1.3
H-Liv	+0.3	HCR	0.3	METR	2.2
DWP\$	\$516	DA	0.9	KETO	2.0
WT\$	\$-36	RP	0.0	MFEV	0.1%

**CONFORMATION** (Based on 0 Daughters in 0 Herds)

PTAT	1.35	UDC	1.57
BWC	-0.40	FLC	1.24



**CALVING TRAITS**

Sire Calving Ease	2.3	81% Rel	Sire stillbirth	5.3	69% Rel
Dtr Calving Ease	2.4	70% Rel	Dtr stillbirth	4.4	64% Rel

<b>TPI</b>	<b>2772</b>	<b>NM\$</b>	<b>736</b>	<b>BPI</b>	<b>357</b>
------------	-------------	-------------	------------	------------	------------

**PRODUCTION** (0 Daughters in 0 Herds) 81% Rel

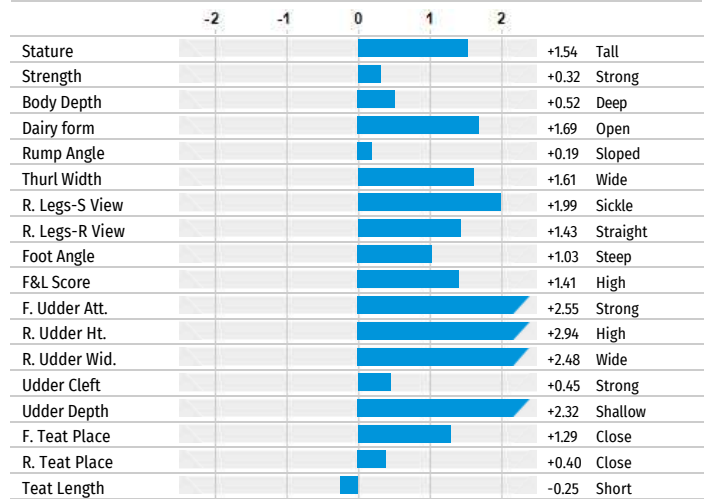
Milk	1368 Lbs	Gestation Length	-4
Protein	42 Lbs 0.00%	FM\$	\$721
Fat	58 Lbs 0.02%	GM\$	\$649

**HEALTH**

PL	5.2	DPR	-0.9	SCS	2.69
C-Liv	+2.9	CCR	-0.8	MAST	0.5
H-Liv	+0.8	HCR	1.5	METR	1.6
DWP\$	\$738	DA	0.7	KETO	1.4
WT\$	\$61	RP	0.0	MFEV	0.2%

**CONFORMATION** (Based on 0 Daughters in 0 Herds)

PTAT	2.10	UDC	2.10
BWC	0.11	FLC	1.08



**CALVING TRAITS**

Sire Calving Ease	1.8	63% Rel	Sire stillbirth	6.2	59% Rel
Dtr Calving Ease	2.2	61% Rel	Dtr stillbirth	5.1	60% Rel

# AltaFASTPRIZE

011H016461

PEAK ALTAFASTPRIZE-ET  
AltaGADZOOK X PURSUIT  
HO840M003247843746 | DOB 6/7/2022  
aAa 342 | DMS 234,123 | EFI 12.0 %  
CDCB & HA-USA Genetic Evaluations 12/2023

\$45 +gst  
\$55 sexed +gst



Alta 511 BB Type



# AltaWHEELHOUSE

011H015365

PEAK WHEELHOUSE-ET  
PURSUIT X DUKE  
HO840M003209641362 | DOB 9/2/2019  
aAa 423 | DMS 135,345 | EFI 11.8 %  
CDCB & HA-USA Genetic Evaluations 12/2023

\$35 +gst  
\$55 sexed +gst



Alta 511 A2 Ge



TPI	3117	NM\$	1088	BPI	494
-----	------	------	------	-----	-----

## PRODUCTION (0 Daughters in 0 Herds) 79% Rel

Milk	756 Lbs	Gestation Length	-4
Protein	61 Lbs 0.13%	FM\$	\$898
Fat	119 Lbs 0.31%	GM\$	\$1044

## HEALTH

PL	5.7	DPR	0.3	SCS	2.66
C-Liv	+2.2	CCR	1.5	MAST	2.6
H-Liv	+0.5	HCR	0.7	METR	3.3
DWP\$	\$1202	DA	0.6	KETO	2.0
WT\$	\$162	RP	0.6	MFEV	0.1%

## CONFORMATION (Based on 0 Daughters in 0 Herds)

PTAT	1.58	UDC	1.52
BWC	0.42	FLC	0.11

	-2	-1	0	1	2	
Stature						+1.27 Tall
Strength						+0.79 Strong
Body Depth						+0.85 Deep
Dairy form						+1.60 Open
Rump Angle						+0.82 Sloped
Thurl Width						+1.42 Wide
R. Legs-S View						-0.12 Posty
R. Legs-R View						+0.21 Straight
Foot Angle						+0.52 Steep
F&L Score						+0.40 High
F. Udder Att.						+1.55 Strong
R. Udder Ht.						+1.95 High
R. Udder Wid.						+2.74 Wide
Udder Cleft						+1.33 Strong
Udder Depth						+0.83 Shallow
F. Teat Place						+1.24 Close
R. Teat Place						+1.53 Close
Teat Length						+0.37 Long

## CALVING TRAITS

Sire Calving Ease	2.1	59% Rel	Sire stillbirth	5.9	55% Rel
Dtr Calving Ease	1.5	57% Rel	Dtr stillbirth	5.2	55% Rel

TPI	2887	NM\$	935	BPI	446
-----	------	------	-----	-----	-----

## PRODUCTION (38 Daughters in 11 Herds) 90% Rel

Milk	1117 Lbs	Gestation Length	-3
Protein	53 Lbs 0.06%	FM\$	\$839
Fat	93 Lbs 0.17%	GM\$	\$863

## HEALTH

PL	5.2	DPR	-1.1	SCS	2.84
C-Liv	+1.8	CCR	0.1	MAST	2.2
H-Liv	+0.4	HCR	3.7	METR	1.4
DWP\$	\$1018	DA	0.8	KETO	1.4
WT\$	\$117	RP	0.1	MFEV	0.0%

## CONFORMATION (Based on 0 Daughters in 0 Herds)

PTAT	1.08	UDC	1.29
BWC	0.80	FLC	0.23

	-2	-1	0	1	2	
Stature						+0.98 Tall
Strength						+1.08 Strong
Body Depth						+0.63 Deep
Dairy form						+1.07 Open
Rump Angle						+1.92 Sloped
Thurl Width						+1.49 Wide
R. Legs-S View						-0.25 Posty
R. Legs-R View						+0.44 Straight
Foot Angle						+0.59 Steep
F&L Score						+0.40 High
F. Udder Att.						+1.25 Strong
R. Udder Ht.						+1.47 High
R. Udder Wid.						+2.85 Wide
Udder Cleft						+0.53 Strong
Udder Depth						+0.65 Shallow
F. Teat Place						+1.39 Close
R. Teat Place						+1.37 Close
Teat Length						-0.77 Short

## CALVING TRAITS

Sire Calving Ease	1.9	99% Rel	Sire stillbirth	6.8	97% Rel
Dtr Calving Ease	1.6	95% Rel	Dtr stillbirth	5.0	94% Rel





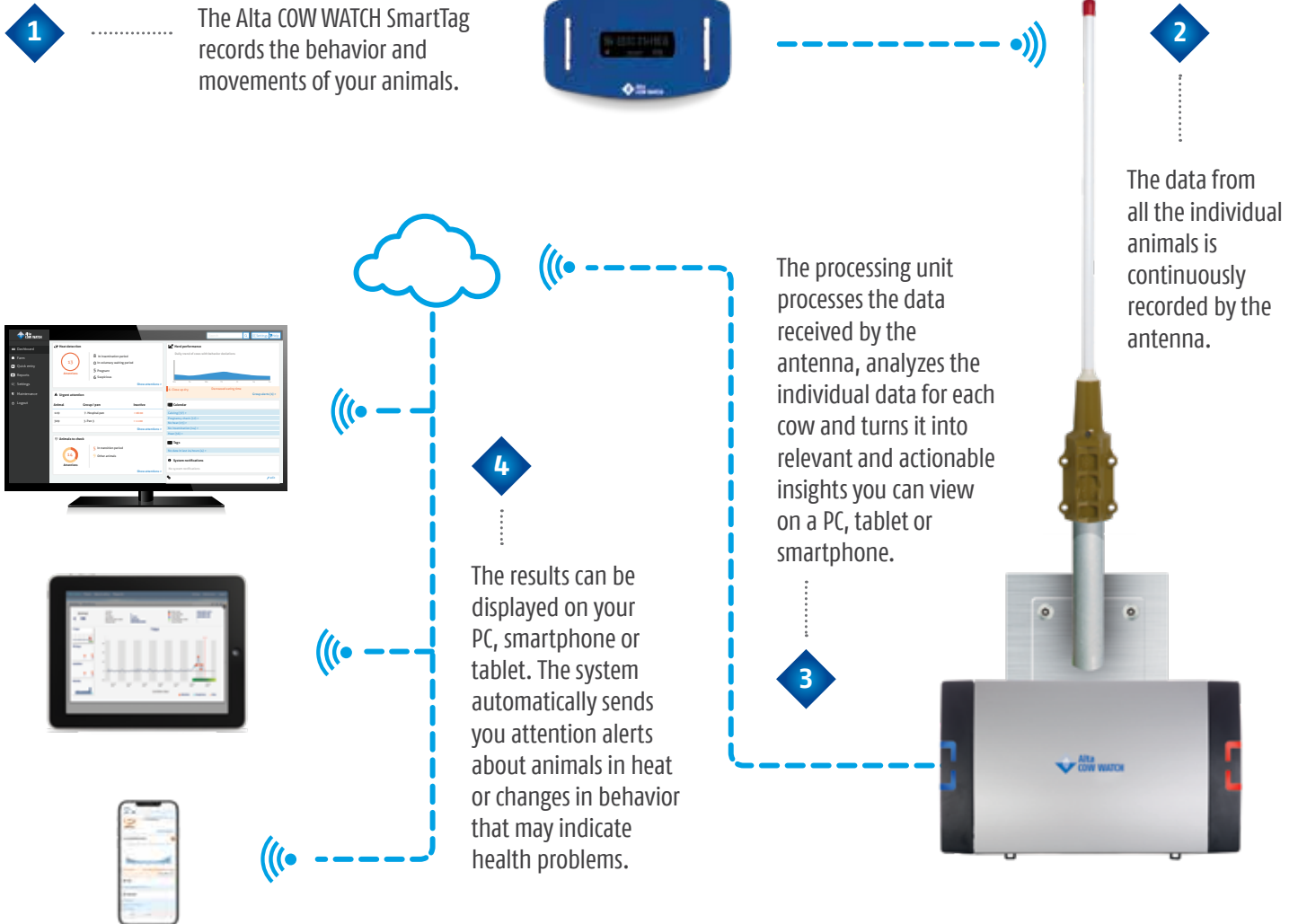
# Alta COW WATCH

Repro, health & welfare



**IMPROVE YOUR HERD'S REPRO, HEALTH, AND WELFARE** with 24/7 rumination, eating and activity monitoring paired with expert support from your trusted Alta advisor.

## HERE'S HOW IT WORKS.



**Alta COW WATCH tags have a 99.5% lifetime success rate**  
*Typical failure rate for other tags is 7%, or more, per year.*

# AltaKALON NEW

PEAK AltaKALON-ET  
AltaKEVLOW X AltaZAZZLE  
Herdbook: HO840M003247843213  
NAAB CODE: 011HO16329



TPI	3070	NM\$	1187	BPI	459
<b>PRODUCTION</b> (0 Daughters in 0 Herds)					
Milk	891	Lbs		Gestation Length	-10
Protein	66	Lbs	+0.13%	FM\$	\$ 993
Fat	108	Lbs	+0.26%	GM\$	\$1150
<b>HEALTH</b>					
PL	6.6	DPR	0.3	SCS	2.67
C-Liv	2.8	CCR	1.8	MAST	3.20
H-Liv	0.5	HCR	0.9	METR	1.50
<b>CALVING TRAITS</b>					
Sire Calving Ease	1.5	62% Rel	Sire stillbirth	5.4	59% Rel
Dtr Calving Ease	2.1	59% Rel	Dtr stillbirth	5.3	57% Rel
<b>CONFORMATION</b>					
PTAT		0.86	UDC		1.21
BWC		-1.51	FLC		-0.12



DCB & HA-USA Genetic Evaluations 12/2023

\$50 +gst | \$60 sexed +gst

# AltaSEVERUS

PEAK AltaSEVERUS-ET  
AltaPLINKO X CRIMSON  
Herdbook: HO840M003224956127  
NAAB CODE: 011HO15900



TPI	2985	NM\$	1107	BPI	473
<b>PRODUCTION</b> (0 Daughters in 0 Herds)					
Milk	1237	Lbs		Gestation Length	-8
Protein	68	Lbs	+0.10%	FM\$	\$ 952
Fat	100	Lbs	+0.18%	GM\$	\$1083
<b>HEALTH</b>					
PL	6.9	DPR	1.8	SCS	2.65
C-Liv	2.8	CCR	3.8	MAST	2.90
H-Liv	0.5	HCR	2.8	METR	1.70
<b>CALVING TRAITS</b>					
Sire Calving Ease	1.7	94% Rel	Sire stillbirth	5.3	85% Rel
Dtr Calving Ease	1.4	70% Rel	Dtr stillbirth	3.8	64% Rel
<b>CONFORMATION</b>					
PTAT		-0.09	UDC		-0.22
BWC		-0.30	FLC		-0.70



DCB & HA-USA Genetic Evaluations 12/2023

\$40 +gst | \$60 sexed +gst

# AltaKLAEBO

PEAK AltaKLAEBO-ET  
GUARANTEE X JEDI  
Herdbook: HOCANM000012948857  
NAAB CODE: 011HO12323



TPI	2863	NM\$	928	BPI	427
<b>PRODUCTION</b> (4055 Daughters in 401 Herds)					
Milk	1025	Lbs		Gestation Length	-4
Protein	59	Lbs	+0.09%	FM\$	\$ 788
Fat	80	Lbs	+0.14%	GM\$	\$931
<b>HEALTH</b>					
PL	5.2	DPR	1.7	SCS	2.74
C-Liv	0.6	CCR	4.1	MAST	2.70
H-Liv	1.0	HCR	0.1	METR	2.00
<b>CALVING TRAITS</b>					
Sire Calving Ease	1.3	98% Rel	Sire stillbirth	4.2	96% Rel
Dtr Calving Ease	1.4	94% Rel	Dtr stillbirth	3.5	93% Rel
<b>CONFORMATION</b>					
PTAT		0.87	UDC		0.93
BWC		0.34	FLC		-1.74



DCB & HA-USA Genetic Evaluations 12/2023

\$20 +gst

# AltaZINGLER

PEAK AltaZINGLER-ET  
AltaZAZZLE X AltaROBERT  
Herdbook: HO840M003213001126  
NAAB CODE: 011HO15559



TPI	2849	NM\$	892	BPI	435
<b>PRODUCTION</b> (0 Daughters in 0 Herds)					
Milk	567	Lbs		Gestation Length	-7
Protein	42	Lbs	+0.09%	FM\$	\$ 763
Fat	71	Lbs	+0.17%	GM\$	\$877
<b>HEALTH</b>					
PL	6.9	DPR	2.8	SCS	2.62
C-Liv	4.4	CCR	4.8	MAST	3.00
H-Liv	0.5	HCR	3.7	METR	2.70
<b>CALVING TRAITS</b>					
Sire Calving Ease	1.6	84% Rel	Sire stillbirth	5.0	72% Rel
Dtr Calving Ease	1.2	70% Rel	Dtr stillbirth	4.1	64% Rel
<b>CONFORMATION</b>					
PTAT		0.54	UDC		0.45
BWC		0.93	FLC		-0.13



DCB & HA-USA Genetic Evaluations 12/2023

\$28 +gst | \$52 sexed +gst

# AltaFUTURAMA

\$24 +gst

## PEAK AltaFUTURAMA-ET

AltaZAZZLE X CASCADE  
 Herdbook: HO840M003215425949  
 NAAB CODE: 011HO15963



Type



TPI	3022	NM\$	862	BPI	403
<b>PRODUCTION</b> (0 Daughters in 0 Herds)					
Milk	440	Lbs		Gestation Length	-5
Protein	56	Lbs	+0.15%	FM\$	\$ 654
Fat	112	Lbs	+0.33%	GM\$	\$833
<b>HEALTH</b>					
PL	3.1	DPR	-0.3	SCS	2.75
C-Liv	0.8	CCR	0.9	MAST	2.90
H-Liv	0.8	HCR	0.5	METR	1.50
<b>CALVING TRAITS</b>					
Sire Calving Ease	2.1	84% Rel	Sire stillbirth	5.8	68% Rel
Dtr Calving Ease	1.5	70% Rel	Dtr stillbirth	4.4	64% Rel
<b>CONFORMATION</b>					
PTAT		2.14	UDC		1.70
BWC		1.13	FLC		0.99



DCDB & HA-USA Genetic Evaluations 12/2023

# AltaREGULUS

\$30 +gst | \$55 sexed +gst | \$65 4mil +gst

## Winstar AltaREGULUS-ET

AltaZAZZLE X CRIMSON  
 Herdbook: HO840M003212150609  
 NAAB CODE: 011HO15783



A2 BB



TPI	3009	NM\$	1021	BPI	462
<b>PRODUCTION</b> (0 Daughters in 0 Herds)					
Milk	516	Lbs		Gestation Length	-4
Protein	56	Lbs	+0.14%	FM\$	\$ 822
Fat	124	Lbs	+0.37%	GM\$	\$960
<b>HEALTH</b>					
PL	5.4	DPR	-0.1	SCS	2.69
C-Liv	3.5	CCR	2.0	MAST	1.70
H-Liv	0.9	HCR	-0.1	METR	1.80
<b>CALVING TRAITS</b>					
Sire Calving Ease	2.6	91% Rel	Sire stillbirth	5.7	85% Rel
Dtr Calving Ease	2.0	70% Rel	Dtr stillbirth	4.3	64% Rel
<b>CONFORMATION</b>					
PTAT		1.03	UDC		0.93
BWC		0.92	FLC		-0.41



DCDB & HA-USA Genetic Evaluations 12/2023

# AltaOLLIE

\$24 +gst | \$55 sexed +gst

## Progenesis AltaOLLIE-ET

HIGHJUMP X AltaCABOT  
 Herdbook: HOCANM000013807989  
 NAAB CODE: 011HO15943



A2 BB



TPI	2992	NM\$	921	BPI	476
<b>PRODUCTION</b> (0 Daughters in 0 Herds)					
Milk	1114	Lbs		Gestation Length	-6
Protein	59	Lbs	+0.08%	FM\$	\$ 795
Fat	113	Lbs	+0.24%	GM\$	\$873
<b>HEALTH</b>					
PL	4.2	DPR	-0.4	SCS	2.81
C-Liv	0.4	CCR	0.6	MAST	1.60
H-Liv	0.8	HCR	1.7	METR	1.00
<b>CALVING TRAITS</b>					
Sire Calving Ease	2.6	73% Rel	Sire stillbirth	5.2	64% Rel
Dtr Calving Ease	2.0	70% Rel	Dtr stillbirth	4.2	64% Rel
<b>CONFORMATION</b>					
PTAT		1.26	UDC		1.73
BWC		0.57	FLC		0.16



DCDB & HA-USA Genetic Evaluations 12/2023

# AltaANTONIO

\$24 +gst | \$45 sexed +gst

## Aurora AltaANTONIO-ET

BANDARES X COMMANDER  
 Herdbook: HO840M003138948148  
 NAAB CODE: 011HO12083



A2 e BB



TPI	2785	NM\$	829	BPI	396
<b>PRODUCTION</b> (2807 Daughters in 589 Herds)					
Milk	1004	Lbs		Gestation Length	-1
Protein	57	Lbs	+0.09%	FM\$	\$ 695
Fat	81	Lbs	+0.15%	GM\$	\$767
<b>HEALTH</b>					
PL	4.0	DPR	-1.4	SCS	2.76
C-Liv	1.1	CCR	0.0	MAST	0.40
H-Liv	0.6	HCR	2.3	METR	-0.50
<b>CALVING TRAITS</b>					
Sire Calving Ease	2.0	96% Rel	Sire stillbirth	5.0	91% Rel
Dtr Calving Ease	2.6	91% Rel	Dtr stillbirth	4.6	90% Rel
<b>CONFORMATION</b>					
PTAT		1.13	UDC		0.91
BWC		0.19	FLC		0.78



DCDB & HA-USA Genetic Evaluations 12/2023



# AltaEXPRESSWAY

\$30 +gst | \$55 sexed +gst

PEAK AltaEXPRESSWAY-ET  
AltaWHEELHOUSE X PURSUIT  
Herdbook: HO840M003229908196  
NAAB CODE: 011HO16198

- G-STAR
- CONCEPT PLUS 511
- Alta 511



TPI	2976	NM\$	983	BPI	458
<b>PRODUCTION</b> (0 Daughters in 0 Herds)					
Milk	697	Lbs		Gestation Length	-3
Protein	49	Lbs	+0.10%	FM\$	\$ 845
Fat	102	Lbs	+0.26%	GM\$	\$931
<b>HEALTH</b>					
PL	6.1	DPR	0.4	SCS	2.79
C-Liv	3.1	CCR	2.3	MAST	3.80
H-Liv	0.3	HCR	4.5	METR	1.30
<b>CALVING TRAITS</b>					
Sire Calving Ease	2.2	63% Rel	Sire stillbirth	6.8	60% Rel
Dtr Calving Ease	1.8	61% Rel	Dtr stillbirth	4.5	60% Rel
<b>CONFORMATION</b>					
PTAT		1.09	UDC		1.01
BWC		0.76	FLC		0.65



CDCB & HA-USA Genetic Evaluations 12/2023

# AltaFUNLOVIN

\$30 +gst | \$55 sexed +gst

PEAK AltaFUNLOVIN-ET  
AltaMAGNIFIQUE X INCREDIBLE  
Herdbook: HO840M003239114836  
NAAB CODE: 011HO16411

- G-STAR
- CONCEPT PLUS 511
- Alta 511



TPI	2974	NM\$	963	BPI	345
<b>PRODUCTION</b> (0 Daughters in 0 Herds)					
Milk	1011	Lbs		Gestation Length	-6
Protein	53	Lbs	+0.07%	FM\$	\$ 850
Fat	99	Lbs	+0.21%	GM\$	\$887
<b>HEALTH</b>					
PL	5.0	DPR	-1.2	SCS	2.78
C-Liv	1.9	CCR	-0.5	MAST	1.70
H-Liv	0.6	HCR	1.3	METR	1.40
<b>CALVING TRAITS</b>					
Sire Calving Ease	1.8	63% Rel	Sire stillbirth	5.9	60% Rel
Dtr Calving Ease	1.6	60% Rel	Dtr stillbirth	4.2	59% Rel
<b>CONFORMATION</b>					
PTAT		1.82	UDC		1.74
BWC		0.60	FLC		0.82



CDCB & HA-USA Genetic Evaluations 12/2023

# AltaOLAF

\$30 +gst | \$55 sexed +gst

PEAK AltaOLAF-ET  
RESOLVE X DELCO  
Herdbook: HO840M003150701313  
NAAB CODE: 011HO15088

- FUTURE STAR
- CONCEPT PLUS DxD
- CONCEPT PLUS 511
- Alta 511
- Type
- A2 BB



TPI	2955	NM\$	1141	BPI	353
<b>PRODUCTION</b> (1804 Daughters in 213 Herds)					
Milk	2811	Lbs		Gestation Length	-2
Protein	69	Lbs	-0.06%	FM\$	\$ 1203
Fat	88	Lbs	-0.06%	GM\$	\$1099
<b>HEALTH</b>					
PL	7.6	DPR	1.3	SCS	2.73
C-Liv	3.1	CCR	3.4	MAST	1.00
H-Liv	1.8	HCR	2.2	METR	0.90
<b>CALVING TRAITS</b>					
Sire Calving Ease	1.7	97% Rel	Sire stillbirth	5.4	92% Rel
Dtr Calving Ease	2.0	89% Rel	Dtr stillbirth	4.9	90% Rel
<b>CONFORMATION</b>					
PTAT		0.01	UDC		1.19
BWC		-0.70	FLC		-2.06



CDCB & HA-USA Genetic Evaluations 12/2023

# AltaDOBBY

\$60 sexed +gst

PEAK AltaDOBBY-ET  
FASTBALL X MILKTIME  
Herdbook: HO840M003212150578  
NAAB CODE: 011HO15779

- FUTURE STAR
- CONCEPT PLUS DxD
- CONCEPT PLUS 511
- Alta 511
- Type
- A2 BB



TPI	2877	NM\$	975	BPI	320
<b>PRODUCTION</b> (0 Daughters in 0 Herds)					
Milk	2110	Lbs		Gestation Length	-9
Protein	62	Lbs	-0.01%	FM\$	\$ 971
Fat	87	Lbs	+0.02%	GM\$	\$907
<b>HEALTH</b>					
PL	5.0	DPR	-1.1	SCS	2.70
C-Liv	1.7	CCR	-0.1	MAST	1.60
H-Liv	1.0	HCR	1.7	METR	1.80
<b>CALVING TRAITS</b>					
Sire Calving Ease	1.7	98% Rel	Sire stillbirth	5.2	95% Rel
Dtr Calving Ease	2.1	70% Rel	Dtr stillbirth	4.6	64% Rel
<b>CONFORMATION</b>					
PTAT		0.67	UDC		0.88
BWC		-0.04	FLC		-0.16



CDCB & HA-USA Genetic Evaluations 12/2023

# AltaZEMINI

## PEAK AltaZEMINI-ET

AltaZAZZLE X AltaLAWSON  
 Herdbook: HO840M003215425541  
 NAAB CODE: 011HO15624



TPI	3010	NM\$	1024	BPI	380
<b>PRODUCTION</b> (0 Daughters in 0 Herds)					
Milk	1155	Lbs		Gestation Length	-7
Protein	68	Lbs	+0.11%	FM\$	\$ 859
Fat	112	Lbs	+0.23%	GM\$	\$971
<b>HEALTH</b>					
PL	4.2	DPR	-1.1	SCS	2.70
C-Liv	1.1	CCR	0.2	MAST	2.40
H-Liv	0.7	HCR	1.1	METR	2.10
<b>CALVING TRAITS</b>					
Sire Calving Ease	2.0	94% Rel	Sire stillbirth	4.8	86% Rel
Dtr Calving Ease	1.4	70% Rel	Dtr stillbirth	4.1	64% Rel
<b>CONFORMATION</b>					
PTAT		1.28	UDC		0.80
BWC		0.58	FLC		0.31



\$30 +gst

DCB & HA-USA Genetic Evaluations 12/2023

# AltaRIVARIDGE

## PEAK AltaRIVARIDGE-ET

AltaMAGNIFIQUE X NO EXCUSE  
 Herdbook: HO840M003239114841  
 NAAB CODE: 011HO16353



TPI	3003	NM\$	1048	BPI	398
<b>PRODUCTION</b> (0 Daughters in 0 Herds)					
Milk	1017	Lbs		Gestation Length	-7
Protein	58	Lbs	+0.09%	FM\$	\$ 911
Fat	110	Lbs	+0.24%	GM\$	\$999
<b>HEALTH</b>					
PL	6.1	DPR	0.4	SCS	2.72
C-Liv	1.9	CCR	2.5	MAST	3.40
H-Liv	0.5	HCR	2.4	METR	2.50
<b>CALVING TRAITS</b>					
Sire Calving Ease	1.6	63% Rel	Sire stillbirth	5.8	60% Rel
Dtr Calving Ease	1.6	61% Rel	Dtr stillbirth	3.7	59% Rel
<b>CONFORMATION</b>					
PTAT		0.59	UDC		0.76
BWC		0.33	FLC		-0.21



\$45 +gst | \$60 sexed +gst

DCB & HA-USA Genetic Evaluations 12/2023

# AltaGIVEAWAY

## Heidifarm AltaGIVEAWAY-ET

GAMECHANGER X ROMERO  
 Herdbook: HOCANM000013165419  
 NAAB CODE: 011HO15432



TPI	2935	NM\$	965	BPI	401
<b>PRODUCTION</b> (111 Daughters in 13 Herds)					
Milk	1343	Lbs		Gestation Length	-1
Protein	59	Lbs	+0.06%	FM\$	\$ 867
Fat	96	Lbs	+0.15%	GM\$	\$959
<b>HEALTH</b>					
PL	3.5	DPR	-0.5	SCS	2.65
C-Liv	0.0	CCR	0.4	MAST	1.30
H-Liv	0.9	HCR	1.6	METR	1.50
<b>CALVING TRAITS</b>					
Sire Calving Ease	1.5	95% Rel	Sire stillbirth	5.1	87% Rel
Dtr Calving Ease	2.4	71% Rel	Dtr stillbirth	5.1	66% Rel
<b>CONFORMATION</b>					
PTAT		0.75	UDC		1.55
BWC		-1.54	FLC		0.87



\$18 +gst

DCB & HA-USA Genetic Evaluations 12/2023

# AltaPINTER-PP

## Winstar AltaPINTER-PP-ET

IMMENSE-P X HEROIC  
 Herdbook: HO840M003243797224  
 NAAB CODE: 011HO16359



TPI	2723	NM\$	842	BPI	364
<b>PRODUCTION</b> (0 Daughters in 0 Herds)					
Milk	1110	Lbs		Gestation Length	-4
Protein	50	Lbs	+0.05%	FM\$	\$ 755
Fat	81	Lbs	+0.13%	GM\$	\$768
<b>HEALTH</b>					
PL	4.5	DPR	-1.4	SCS	2.74
C-Liv	1.8	CCR	-0.4	MAST	2.50
H-Liv	0.4	HCR	-0.9	METR	1.40
<b>CALVING TRAITS</b>					
Sire Calving Ease	1.6	63% Rel	Sire stillbirth	5.2	60% Rel
Dtr Calving Ease	1.9	59% Rel	Dtr stillbirth	4.1	58% Rel
<b>CONFORMATION</b>					
PTAT		0.31	UDC		0.96
BWC		-0.88	FLC		-0.41



\$24 +gst

DCB & HA-USA Genetic Evaluations 12/2023



# AltaHACKSAW **NEW**

\$35 +gst | \$55 sexed +gst

PEAK AltaHACKSAW-ET  
OVERDO X BIG AL  
Herdbook: HO840M003252197646  
NAAB CODE: 011HO16679



TPI	3124	NM\$	1126	BPI	326
<b>PRODUCTION</b> (0 Daughters in 0 Herds)					
Milk	1132	Lbs		Gestation Length	-2
Protein	61	Lbs	+0.09%	FM\$	\$ 985
Fat	118	Lbs	+0.26%	GM\$	\$1078
<b>HEALTH</b>					
PL	5.8	DPR	-0.3	SCS	2.56
C-Liv	0.5	CCR	1.2	MAST	2.20
H-Liv	1.0	HCR	1.4	METR	1.30
<b>CALVING TRAITS</b>					
Sire Calving Ease	1.7	63% Rel	Sire stillbirth	5.7	59% Rel
Dtr Calving Ease	2.2	57% Rel	Dtr stillbirth	4.3	55% Rel
<b>CONFORMATION</b>					
PTAT		1.52	UDC		1.79
BWC		0.07	FLC		0.52



DCDB & HA-USA Genetic Evaluations 12/2023

# AltaFIRSTTIME **NEW**

\$35 +gst | \$55 sexed +gst

FB AltaFIRSTTIME-ET  
AltaZAZZLE X ACURA  
Herdbook: HO840M003225323219  
NAAB CODE: 011HO16088



TPI	3117	NM\$	1078	BPI	509
<b>PRODUCTION</b> (0 Daughters in 0 Herds)					
Milk	603	Lbs		Gestation Length	-4
Protein	60	Lbs	+0.14%	FM\$	\$ 876
Fat	122	Lbs	+0.35%	GM\$	\$1042
<b>HEALTH</b>					
PL	5.4	DPR	0.3	SCS	2.81
C-Liv	3.6	CCR	2.2	MAST	2.90
H-Liv	0.7	HCR	2.3	METR	2.40
<b>CALVING TRAITS</b>					
Sire Calving Ease	1.9	63% Rel	Sire stillbirth	5.7	60% Rel
Dtr Calving Ease	2.2	62% Rel	Dtr stillbirth	4.8	61% Rel
<b>CONFORMATION</b>					
PTAT		1.44	UDC		1.47
BWC		0.01	FLC		0.64



DCDB & HA-USA Genetic Evaluations 12/2023

# AltaAMICK

\$35 +gst | \$55 sexed +gst

PEAK AltaAMICK-ET  
AltaZAZZLE X PURSUIT  
Herdbook: HO840M003224956015  
NAAB CODE: 011HO16061



TPI	3062	NM\$	1061	BPI	498
<b>PRODUCTION</b> (0 Daughters in 0 Herds)					
Milk	78	Lbs		Gestation Length	-8
Protein	43	Lbs	+0.14%	FM\$	\$ 854
Fat	101	Lbs	+0.35%	GM\$	\$1035
<b>HEALTH</b>					
PL	7.4	DPR	2.1	SCS	2.46
C-Liv	3.6	CCR	4.2	MAST	5.60
H-Liv	0.2	HCR	4.5	METR	2.70
<b>CALVING TRAITS</b>					
Sire Calving Ease	1.6	74% Rel	Sire stillbirth	5.9	65% Rel
Dtr Calving Ease	1.1	70% Rel	Dtr stillbirth	4.2	64% Rel
<b>CONFORMATION</b>					
PTAT		1.11	UDC		0.88
BWC		0.73	FLC		0.54



DCDB & HA-USA Genetic Evaluations 12/2023

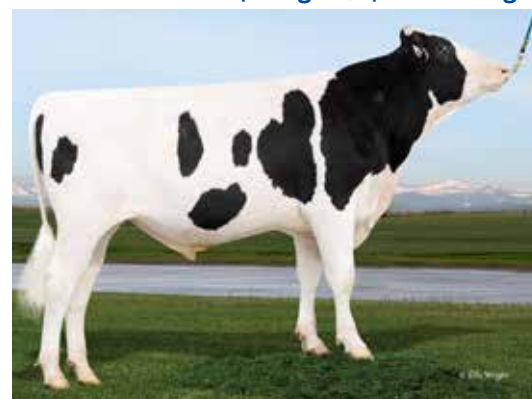
# AltaSLAVIA

\$30 +gst | \$50 sexed +gst

PEAK AltaSLAVIA-ET  
AltaSTEALTH X AltaBUNDLE  
Herdbook: HO840M003224955941  
NAAB CODE: 011HO15832



TPI	2845	NM\$	896	BPI	243
<b>PRODUCTION</b> (0 Daughters in 0 Herds)					
Milk	2214	Lbs		Gestation Length	-6
Protein	72	Lbs	+0.01%	FM\$	\$ 864
Fat	89	Lbs	+0.01%	GM\$	\$841
<b>HEALTH</b>					
PL	4.3	DPR	-0.7	SCS	2.83
C-Liv	0.6	CCR	1.2	MAST	0.30
H-Liv	0.8	HCR	1.2	METR	1.60
<b>CALVING TRAITS</b>					
Sire Calving Ease	1.9	71% Rel	Sire stillbirth	5.3	64% Rel
Dtr Calving Ease	1.8	70% Rel	Dtr stillbirth	3.5	64% Rel
<b>CONFORMATION</b>					
PTAT		0.82	UDC		0.41
BWC		0.52	FLC		-0.72



DCDB & HA-USA Genetic Evaluations 12/2023



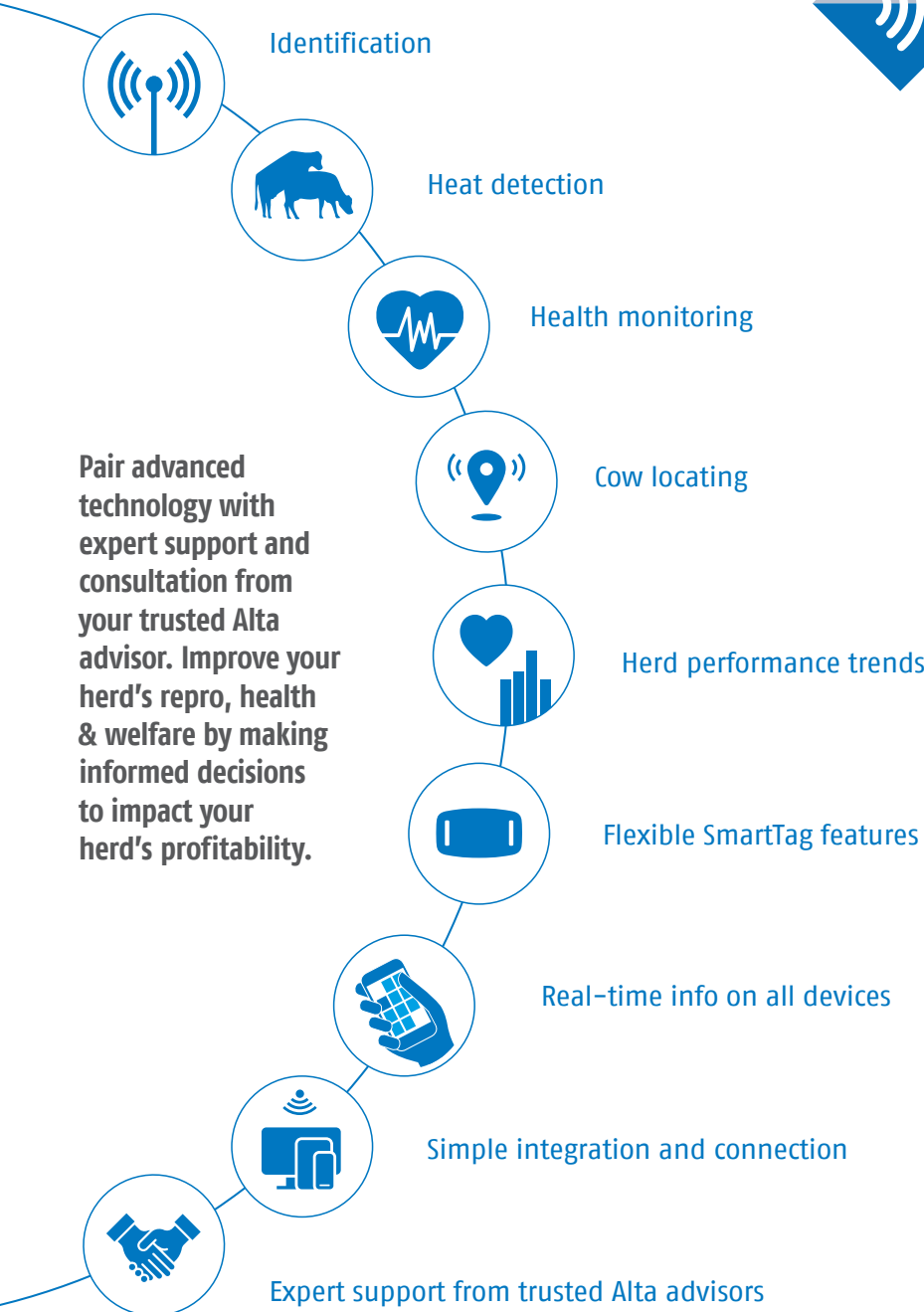


When you install Alta COW WATCH,  
**YOU INSTALL ALTA**



# Alta COW WATCH

Repro, health & welfare



Pair advanced technology with expert support and consultation from your trusted Alta advisor. Improve your herd's repro, health & welfare by making informed decisions to impact your herd's profitability.

"Applying the collars is a long process, and the support from the Alta COW WATCH Team has been absolutely amazing. Without them we wouldn't be able to do it. Our dairy farmers & share farmers they get up early in the morning, the last thing they want to do is go and put on thousands of collars. To have the Alta team come over & assist to get the collars on, get the numbers into the system has been unreal. We really enjoy working with the Alta team, their service is above the rest and the whole experience with Alta has been amazing".

*Lisa Ashley*  
40 South Dairies

**CONTACT JAYDE LEE**  
Alta COW WATCH Manager, for more information.

+61 4 1967 7209 | [jayde.lee@altagenetics.com](mailto:jayde.lee@altagenetics.com)  
[info@altagenetics.au](mailto:info@altagenetics.au) | [australia.altagenetics.com](http://australia.altagenetics.com)

# AltaCURRY

G-DERUYTER AltaCURRY-ET

CHARLEY X OCTOBERFEST X SUPERSIRE  
 H0840M003145240036 | DOB 8/12/2017  
 AUS Genetic Evaluations 12/2023

011H012342

\$20 +gst  
 \$45 sexed +gst



<b>BPI</b>	<b>508</b>	<b>HWI</b>	<b>514</b>	<b>ASI</b>	<b>195</b>
------------	------------	------------	------------	------------	------------

<b>PRODUCTION</b>	66 dtrs / 7 herds Rel. 75%		(ABV 12/2023)
Milk	605	KG	
Fat	34	KG	+0.12 %
Protein	26	KG	+0.18 %

<b>HEALTH</b>			
Cell Count	218	68 %R	
Survival	112	68 %R	
Dtr. Fertility	111	71 %R	
Calving Ease	103	95 %R	
Gestation Length	-5	97 %R	

<b>WORKABILITIES</b>	0 dtrs / 0 herds Rel. 70%	
Milking Speed		98
Temperament		101
Likability		102

<b>TYPE</b>	0 dtrs / 0 herds Rel. 73%		(ABV 12/2023)
Overall Type	103	Rear Set	96
Mammary System	101	Rear Leg Rear View	104
Feet & Legs	102	Udder Depth	103
Rump	101	Fore Attachment	103
Dairy Strength	99	Rear Attachment Height	100
Stature	102	Rear Attachment Width	100
Muzzle Width	104	Centre Ligament	98
Chest Width	102	Teat Placement (front)	100
Pin Width	102	Teat Placement (rear)	99
Pin Set	100	Teat Length	94
Foot Angle	102	Loin Strength	104

# AltaCOUNTDOWN-PP

TTM AltaCOUNTDOWN-PP-ET

EDGE-P X CRIMSON X CHARLEY  
 H0840M003220448663 | DOB 1/31/2021  
 AUS Genetic Evaluations 12/2023

011H016105

\$28 +gst  
 \$55 sexed +gst



<b>BPI</b>	<b>454</b>	<b>HWI</b>	<b>447</b>	<b>ASI</b>	<b>213</b>
------------	------------	------------	------------	------------	------------

<b>PRODUCTION</b>	0 dtrs / 0 herds Rel. 77%		(ABV 12/2023)
Milk	184	KG	
Fat	51	KG	+0.62 %
Protein	18	KG	+0.25 %

<b>HEALTH</b>			
Cell Count	167	68 %R	
Survival	110	54 %R	
Dtr. Fertility	111	54 %R	
Calving Ease	102	92 %R	
Gestation Length	-7	92 %R	

<b>WORKABILITIES</b>	0 dtrs / 0 herds Rel. 65%	
Milking Speed		100
Temperament		102
Likability		103

<b>TYPE</b>	0 dtrs / 0 herds Rel. 63%		(ABV 12/2023)
Overall Type	100	Rear Set	106
Mammary System	98	Rear Leg Rear View	100
Feet & Legs	100	Udder Depth	101
Rump	108	Fore Attachment	96
Dairy Strength	98	Rear Attachment Height	101
Stature	100	Rear Attachment Width	100
Muzzle Width	99	Centre Ligament	94
Chest Width	102	Teat Placement (front)	102
Pin Width	103	Teat Placement (rear)	101
Pin Set	106	Teat Length	95
Foot Angle	96	Loin Strength	108

# AltaFLASHBACK

011H015202

PEAK AltaFLASHBACK-ET

POSITIVE X AltaROBSON X SILVER  
 H0840M003200824169 | DOB 12/8/2018  
 AUS Genetic Evaluations 12/2023

\$24 +gst  
 \$40 sexed +gst



<b>BPI</b>	<b>475</b>	<b>HWI</b>	<b>427</b>	<b>ASI</b>	<b>244</b>
------------	------------	------------	------------	------------	------------

<b>PRODUCTION</b> 66 dtrs / 8 herds Rel. 75% (ABV 12/2023)			
Milk	-58	KG	
Fat	47	KG	+0.71 %
Protein	21	KG	+0.43 %

<b>HEALTH</b>			
Cell Count	194	71	%R
Survival	108	64	%R
Dtr. Fertility	109	66	%R
Calving Ease	102	97	%R
Gestation Length	-5	96	%R

<b>WORKABILITIES</b> 1 dtrs / 1 herds Rel. 76%	
Milking Speed	101
Temperament	99
Likability	102

<b>TYPE</b> 9 dtrs / 2 herds Rel. 75% (ABV 12/2023)			
Overall Type	107	Rear Set	99
Mammary System	107	Rear Leg Rear View	99
Feet & Legs	100	Udder Depth	107
Rump	104	Fore Attachment	107
Dairy Strength	100	Rear Attachment Height	106
Stature	106	Rear Attachment Width	102
Muzzle Width	101	Centre Ligament	100
Chest Width	102	Teat Placement (front)	108
Pin Width	96	Teat Placement (rear)	107
Pin Set	99	Teat Length	98
Foot Angle	102	Loin Strength	102

# AltaGOOSE

011H016180

PEAK AltaGOOSE-ET

AltaMAGNIFIQUE X FORTNITE X MARIUS  
 H0840M003235933167 | DOB 10/7/2021  
 AUS Genetic Evaluations 12/2023

\$24 +gst  
 \$45 sexed +gst



<b>BPI</b>	<b>506</b>	<b>HWI</b>	<b>475</b>	<b>ASI</b>	<b>224</b>
------------	------------	------------	------------	------------	------------

<b>PRODUCTION</b> 0 dtrs / 0 herds Rel. 76% (ABV 12/2023)			
Milk	107	KG	
Fat	48	KG	+0.62 %
Protein	20	KG	+0.32 %

<b>HEALTH</b>			
Cell Count	181	66	%R
Survival	111	50	%R
Dtr. Fertility	110	48	%R
Calving Ease	103	70	%R
Gestation Length	-8	62	%R

<b>WORKABILITIES</b> 0 dtrs / 0 herds Rel. 61%	
Milking Speed	101
Temperament	99
Likability	102

<b>TYPE</b> 0 dtrs / 0 herds Rel. 60% (ABV 12/2023)			
Overall Type	106	Rear Set	101
Mammary System	103	Rear Leg Rear View	106
Feet & Legs	105	Udder Depth	104
Rump	106	Fore Attachment	104
Dairy Strength	102	Rear Attachment Height	104
Stature	104	Rear Attachment Width	101
Muzzle Width	106	Centre Ligament	99
Chest Width	104	Teat Placement (front)	103
Pin Width	101	Teat Placement (rear)	101
Pin Set	106	Teat Length	93
Foot Angle	101	Loin Strength	103



# AltaFIRETIGER

011H015867

PEAK AltaFIRETIGER-ET

AltaTIKI X AltaEXPLOSION X JEDI  
HO840M003219939630 | DOB 8/18/2020  
AUS Genetic Evaluations 12/2023

\$30 +gst  
\$55 sexed +gst



<b>BPI</b>	<b>439</b>	<b>HWI</b>	<b>363</b>	<b>ASI</b>	<b>272</b>
------------	------------	------------	------------	------------	------------

PRODUCTION 0 dtrs / 0 herds Rel. 77% (ABV 12/2023)			
Milk	360	KG	
Fat	52	KG	+0.52 %
Protein	29	KG	+0.36 %

HEALTH			
Cell Count	164	68	%R
Survival	109	56	%R
Dtr. Fertility	106	57	%R
Calving Ease	103	71	%R
Gestation Length	-9	63	%R

WORKABILITIES 0 dtrs / 0 herds Rel. 67%	
Milking Speed	102
Temperament	103
Likability	104

TYPE 0 dtrs / 0 herds Rel. 61% (ABV 12/2023)			
Overall Type	101	Rear Set	96
Mammary System	100	Rear Leg Rear View	103
Feet & Legs	103	Udder Depth	97
Rump	101	Fore Attachment	99
Dairy Strength	102	Rear Attachment Height	104
Stature	102	Rear Attachment Width	106
Muzzle Width	104	Centre Ligament	98
Chest Width	101	Teat Placement (front)	91
Pin Width	103	Teat Placement (rear)	96
Pin Set	97	Teat Length	103
Foot Angle	102	Loin Strength	102

# AltaMAMADI

011H016096

PEAK AltaMAMADI-ET

AltaMAGNIFIQUE X AltaZAZZLE X AltaEXPLOSION  
HO840M003224928456 | DOB 8/17/2021  
AUS Genetic Evaluations 12/2023

\$28 +gst  
\$50 sexed +gst



<b>BPI</b>	<b>500</b>	<b>HWI</b>	<b>524</b>	<b>ASI</b>	<b>253</b>
------------	------------	------------	------------	------------	------------

PRODUCTION 0 dtrs / 0 herds Rel. 77% (ABV 12/2023)			
Milk	-222	KG	
Fat	47	KG	+0.81 %
Protein	20	KG	+0.50 %

HEALTH			
Cell Count	161	66	%R
Survival	106	52	%R
Dtr. Fertility	118	51	%R
Calving Ease	103	73	%R
Gestation Length	-7	63	%R

WORKABILITIES 0 dtrs / 0 herds Rel. 63%	
Milking Speed	100
Temperament	100
Likability	101

TYPE 0 dtrs / 0 herds Rel. 61% (ABV 12/2023)			
Overall Type	95	Rear Set	102
Mammary System	98	Rear Leg Rear View	101
Feet & Legs	99	Udder Depth	104
Rump	94	Fore Attachment	101
Dairy Strength	96	Rear Attachment Height	99
Stature	98	Rear Attachment Width	96
Muzzle Width	102	Centre Ligament	97
Chest Width	103	Teat Placement (front)	101
Pin Width	95	Teat Placement (rear)	99
Pin Set	94	Teat Length	101
Foot Angle	100	Loin Strength	95

# Alta Australia Domestic Sire Program



We have a long history of working with Australian dairy farmers to help them create genetics that add value to their business.

At Alta, we believe there are some great Australian cow families that have been developed under Australian conditions that have genetics to create Alta 4-EVENT COWS.

With only four events per lactation, Alta 4-EVENT COWS are the easiest, healthiest, and most profitable cows in your herd.



## FRESH

with a healthy calf and no metabolic issues

## BRED

only once

## PREGNANT

with a calf and does not abort

## DRY

with no health problems

Do you have a Holstein or Jersey bull that fits our Alta Domestic program?

*Become a TRUE BLUE partner with Alta.*



HOLSTEIN - Phil McKenna | 0438 777 411  
phillip.mckenna@altagenetics.com

JERSEY - Karin Couch | 0448 634 533  
karin.couch@altagenetics.com

# AltaHORATIO

011JE07453

**NEW**

JX PEAK ALTAHORATIO {5}-ET  
 HENDRIX {4} X ENLITE  
 JE840M003247843494 | DOB 4/6/2022  
 aAa 234 | DMS 456,561 | GFI 8.6 % | BBR 100  
 CDCB & AJCA Genetic Evaluations 12/2023

\$34 +gst



A2 Type

<b>JPI</b>	<b>185</b>	<b>CM\$</b>	<b>670</b>	<b>BPI</b>	<b>217</b>
------------	------------	-------------	------------	------------	------------

PRODUCTION (0 Daughters in 0 Herds) 73% Rel					
Milk	1462 Lbs		Gestation Length		+4
Protein	55 Lbs	0.01%	FM\$		\$609
Fat	59 Lbs	-0.05%	GM\$		\$611

HEALTH					
PL	4.7	DPR	0.3	SCS	2.94
C-Liv	+0.6	CCR	1.5	MAST	-0.4
H-Liv	+0.1	HCR	2.1	METR	0.3
DWP\$	\$1005	DA	0.1	KETO	-0.1
WT\$	\$140	RP	-0.2	MFEV	0.1%

CONFORMATION (Based on 0 Daughters in 0 Herds)					
PTAT	1.3 JUL				16.67
	-2	-1	0	1	2
Stature					+1.5 Tall
Strength					+0.8 Strong
Dairy form					+1.4 Open
Rump Angle					-0.2 High Pins
Thurl Width					+0.9 Wide
R. Legs-S View					-0.3 Posty
Foot Angle					+0.6 Steep
F. Udder Att.					+2.1 Strong
R. Udder Ht.					+0.9 High
R. Udder Wid.					+0.6 Wide
Udder Cleft					+0.4 Strong
Udder Depth					+1.2 Shallow
F. Teat Place					+1.0 Close
RTP - Side View					-1.2 Wide
RTP - Rear View					+0.9 Close
Teat Length					-0.7 Short

# AltaKENO

011JE07368

JX DUPAT ALTAKENO {6}-ET  
 JX THRASHER {6} X VICEROY  
 JE840M003206581246 | DOB 9/1/2020  
 aAa 342 | DMS 234 | GFI 7.5 % | BBR 100  
 CDCB & AJCA Genetic Evaluations 12/2023

\$30 +gst

\$55 sexed +gst



Alta 511 A2 BB

<b>JPI</b>	<b>175</b>	<b>CM\$</b>	<b>664</b>	<b>BPI</b>	<b>233</b>
------------	------------	-------------	------------	------------	------------

PRODUCTION (0 Daughters in 0 Herds) 79% Rel					
Milk	1478 Lbs		Gestation Length		+1
Protein	65 Lbs	0.05%	FM\$		\$556
Fat	62 Lbs	-0.04%	GM\$		\$638

HEALTH					
PL	3.2	DPR	1.1	SCS	3.00
C-Liv	+2.2	CCR	1.7	MAST	-3.3
H-Liv	+0.4	HCR	3.2	METR	0.0
DWP\$	\$849	DA	0.5	KETO	0.0
WT\$	\$-2	RP	-0.2	MFEV	0.3%

CONFORMATION (Based on 0 Daughters in 0 Herds)					
PTAT	1.0 JUL				12.99
	-2	-1	0	1	2
Stature					+2.1 Tall
Strength					+1.2 Strong
Dairy form					+1.2 Open
Rump Angle					0.0 High Pins
Thurl Width					+1.1 Wide
R. Legs-S View					+1.5 Sickie
Foot Angle					-0.1 Low
F. Udder Att.					+1.2 Strong
R. Udder Ht.					+0.8 High
R. Udder Wid.					+0.5 Wide
Udder Cleft					+0.8 Strong
Udder Depth					+0.4 Shallow
F. Teat Place					+1.0 Close
RTP - Side View					+0.3 Close
RTP - Rear View					+1.0 Close
Teat Length					+0.9 Long



# AltaDRAYCE

JX PEAK AltaDRAYCE {6}-ET  
 JX CHIEF{6} X AltaSASSO {4}  
 Herdbook: JE840M003252778498  
 NAAB CODE: 011JE07526



A2 BB Type



**NEW**

JPI	195	CM\$	897	BPI	222
<b>PRODUCTION</b> (0 Daughters in 0 Herds)					
Milk	2165	Lbs		Gestation Length	+4
Protein	61	Lbs	-0.08%	FM\$	\$ 910
Fat	78	Lbs	-0.11%	GM\$	\$802
<b>HEALTH</b>					
PL	6.1	DPR	-1.8	SCS	2.84
C-Liv	-0.2	CCR	-0.1	MAST	-1.70
H-Liv	0.3	HCR	2.4	METR	-0.50
<b>CONFORMATION</b>					
PTAT		1.9	JUI		15.64



CDCB & HA-USA Genetic Evaluations 12/2023

\$34 +gst | \$60 sexed +gst

# AltaSASSO

JX Twinridge AltaSASSO {4}-ET  
 ZINC {5} X DELUCA {3}  
 Herdbook: JE840M003207538047  
 NAAB CODE: 011JE07161



A2 BB Type



JPI	164	CM\$	628	BPI	194
<b>PRODUCTION</b> (10 Daughters in 4 Herds)					
Milk	961	Lbs		Gestation Length	+2
Protein	52	Lbs	+0.08%	FM\$	\$ 509
Fat	70	Lbs	+0.11%	GM\$	\$603
<b>HEALTH</b>					
PL	2.3	DPR	0.0	SCS	3.05
C-Liv	0.5	CCR	1.0	MAST	-2.50
H-Liv	-0.1	HCR	2.5	METR	-0.70
<b>CONFORMATION</b>					
PTAT		1.4	JUI		19.37



CDCB & HA-USA Genetic Evaluations 12/2023

\$30 +gst | \$55 sexed +gst

# AltaSIDEREAL-PP

TOG AltaSIDEREAL-PP-ET  
 PITTSFIELD-P X DEMOS-P  
 Herdbook: JE840M003247116392  
 NAAB CODE: 011JE07502



A2 BB



JPI	126	CM\$	617	BPI	227
<b>PRODUCTION</b> (0 Daughters in 0 Herds)					
Milk	748	Lbs		Gestation Length	+3
Protein	45	Lbs	+0.08%	FM\$	\$ 497
Fat	62	Lbs	+0.12%	GM\$	\$487
<b>HEALTH</b>					
PL	4.5	DPR	-2.2	SCS	2.95
C-Liv	0.7	CCR	-1.4	MAST	-2.30
H-Liv	0.7	HCR	2.4	METR	0.10
<b>CONFORMATION</b>					
PTAT		0.6	JUI		10.05



CDCB & HA-USA Genetic Evaluations 12/2023

\$24 +gst | \$45 sexed +gst

# AltaSTACKJACK

JX PEAK AltaSTACKJACK {5}-ET  
 GALLANTRY X AROUND {5}  
 Herdbook: JE840M003231328259  
 NAAB CODE: 011JE07347



Type



JPI	108	CM\$	642	BPI	207
<b>PRODUCTION</b> (0 Daughters in 0 Herds)					
Milk	1305	Lbs		Gestation Length	+4
Protein	54	Lbs	+0.03%	FM\$	\$ 581
Fat	77	Lbs	+0.06%	GM\$	\$602
<b>HEALTH</b>					
PL	1.7	DPR	-2.0	SCS	3.32
C-Liv	-0.6	CCR	-1.7	MAST	-4.30
H-Liv	0.4	HCR	2.1	METR	-0.80
<b>CONFORMATION</b>					
PTAT		1.5	JUI		13.96



CDCB & HA-USA Genetic Evaluations 12/2023

\$24 +gst | \$45 sexed +gst

# AltaMOHANA

JX PINE-TREE PEAK AltaMOHANA {6}-ET

A-GAME X JX THRASHER {6} X AMPLIFY {3}

JE840M003250026002 | DOB 5/8/2022 | BBR 100

AUS Genetic Evaluations 12/2023

011JE07493

**NEW**

\$34 +gst

\$60 sexed +gst



Alta 511 A2 BB Type

<b>BPI</b>	<b>279</b>	<b>HWI</b>	<b>218</b>	<b>ASI</b>	<b>185</b>
------------	------------	------------	------------	------------	------------

<b>PRODUCTION</b> 0 dtrs / 0 herds Rel. 74% (ABV 12/2023)			
Milk	453	KG	
Fat	37	KG	+0.23 %
Protein	22	KG	+0.13 %

<b>HEALTH</b>			
Cell Count	123	66	%R
Survival	106	41	%R
Dtr. Fertility	102	40	%R
Gestation Length	0	0	%R

<b>WORKABILITIES</b> 0 dtrs / 0 herds Rel. 68%			
Milking Speed			100
Temperament			103
Likability			104

<b>TYPE</b> 0 dtrs / 0 herds Rel. 48% (ABV 12/2023)			
Overall Type	101	Udder Depth	100
Mammary System	100	Fore Attachment	98
Stature	105	Rear Attachment Height	101
Muzzle Width	100	Rear Attachment Width	98
Chest Width	100	Centre Ligament	100
Pin Width	93	Teat Placement (front)	104
Pin Set	98	Teat Placement (rear)	99
Foot Angle	102	Teat Length	105
Rear Set	98	Loin Strength	99
Rear Leg Rear View	102		

# AltaFIREOPAL

JX PEAK AltaFIREOPAL {6}-ET

GOT MAID X JX DASHIELL {6} X WORLD CUP {4}

JE840M003228352351 | DOB 1/11/2021 | BBR 100

AUS Genetic Evaluations 12/2023

011JE07333

\$24 +gst

\$45 sexed +gst



Alta 511 A2 BB Type

<b>BPI</b>	<b>384</b>	<b>HWI</b>	<b>294</b>	<b>ASI</b>	<b>219</b>
------------	------------	------------	------------	------------	------------

<b>PRODUCTION</b> 0 dtrs / 0 herds Rel. 76% (ABV 12/2023)			
Milk	342	KG	
Fat	33	KG	+0.27 %
Protein	27	KG	+0.32 %

<b>HEALTH</b>			
Cell Count	152	67	%R
Survival	108	51	%R
Dtr. Fertility	100	43	%R
Gestation Length	-1	57	%R

<b>WORKABILITIES</b> 0 dtrs / 0 herds Rel. 51%			
Milking Speed			102
Temperament			103
Likability			104

<b>TYPE</b> 0 dtrs / 0 herds Rel. 54% (ABV 12/2023)			
Overall Type	101	Udder Depth	102
Mammary System	97	Fore Attachment	102
Stature	102	Rear Attachment Height	99
Muzzle Width	100	Rear Attachment Width	96
Chest Width	102	Centre Ligament	94
Pin Width	98	Teat Placement (front)	98
Pin Set	99	Teat Placement (rear)	97
Foot Angle	100	Teat Length	103
Rear Set	98	Loin Strength	100
Rear Leg Rear View	100		

# AltaGAMBINO-UR

\$50 sexed +gst

United Pride 1635-ET

CESPEDES {3} X JEDI  
 Herdbook: XD840M003200373369  
 NAAB CODE: 011XD07023



<b>JPI</b>	<b>177</b>	<b>CM\$</b>	<b>551</b>	<b>BPI</b>	<b>307</b>
<b>PRODUCTION</b> (10 Daughters in 2 Herds)					
Milk	1706	Lbs		Gestation Length	-3
Protein	55	Lbs	-0.03%	FM\$	\$ 526
Fat	70	Lbs	-0.05%	GM\$	\$518
<b>HEALTH</b>					
PL	2.3	DPR	0.8	SCS	2.89
C-Liv	1.5	CCR	0.6	MAST	0.20
H-Liv	1.4	HCR	-0.1	METR	0.30
DWP\$	0	DA	-0.1	KETO	0.00
WT\$	0	RP	0.0	MFEV	0.2%
<b>CONFORMATION</b>					
PTAT		-0.2	JUI		12.12

CDCB & AJCA Genetic Evaluations 12/2023



# AltaMARSTON-UR

\$20 +gst

UR JX CO-OP GD  
 AltaMARSTON {0}

CESPEDES {3} X JEDI  
 Herdbook: XD840M003148854657  
 NAAB CODE: 011XD07090



A2



<b>JPI</b>	<b>176</b>	<b>CM\$</b>	<b>491</b>	<b>BPI</b>	<b>289</b>
<b>PRODUCTION</b> (0 Daughters in 0 Herds)					
Milk	1715	Lbs		Gestation Length	-1
Protein	55	Lbs	-0.03%	FM\$	\$ 465
Fat	59	Lbs	-0.10%	GM\$	\$453
<b>HEALTH</b>					
PL	2.6	DPR	1.5	SCS	2.85
C-Liv	2.4	CCR	1.5	MAST	0.50
H-Liv	1.9	HCR	0.2	METR	0.00
DWP\$	0	DA	-0.1	KETO	-0.20
WT\$	0	RP	-0.1	MFEV	0.2%
<b>CONFORMATION</b>					
PTAT		-0.3	JUI		8.83

CDCB & AJCA Genetic Evaluations 12/2023



# AltaBOTTAS-UR

\$20 +gst | \$50 sexed +gst

UR JX FB AltaBOTTAS {0}-ET

JX BUTKUS {4} X JARED  
 Herdbook: XD840M003216571339  
 NAAB CODE: 011XD07442



A2



<b>JPI</b>	<b>186</b>	<b>CM\$</b>	<b>570</b>	<b>BPI</b>	<b>285</b>
<b>PRODUCTION</b> (0 Daughters in 0 Herds)					
Milk	1585	Lbs		Gestation Length	-3
Protein	49	Lbs	-0.04%	FM\$	\$ 555
Fat	67	Lbs	-0.04%	GM\$	\$547
<b>HEALTH</b>					
PL	3.6	DPR	2.1	SCS	2.84
C-Liv	1.7	CCR	2.5	MAST	-1.60
H-Liv	1.5	HCR	1.6	METR	0.20
DWP\$	0	DA	0.0	KETO	-0.30
WT\$	0	RP	-0.1	MFEV	0.2%
<b>CONFORMATION</b>					
PTAT		0.0	JUI		14.13

CDCB & AJCA Genetic Evaluations 12/2023



# AltaSCRIBBAGE-UR

\$20 +gst | \$50 sexed +gst

UR JX FB  
 AltaSCRIBBAGE {0}-ET

JX BUTKUS {4} X PERK  
 Herdbook: XD840M003216570892  
 NAAB CODE: 011XD07405



A2



<b>JPI</b>	<b>192</b>	<b>CM\$</b>	<b>626</b>	<b>BPI</b>	<b>281</b>
<b>PRODUCTION</b> (0 Daughters in 0 Herds)					
Milk	1807	Lbs		Gestation Length	0
Protein	59	Lbs	-0.03%	FM\$	\$ 591
Fat	83	Lbs	-0.02%	GM\$	\$599
<b>HEALTH</b>					
PL	2.6	DPR	1.1	SCS	2.82
C-Liv	0.9	CCR	1.6	MAST	-2.10
H-Liv	1.7	HCR	2.2	METR	0.00
DWP\$	0	DA	-0.1	KETO	-0.20
WT\$	0	RP	-0.2	MFEV	0.3%
<b>CONFORMATION</b>					
PTAT		-0.1	JUI		10.91

CDCB & AJCA Genetic Evaluations 12/2023







**Alta BULLSEYE**  
Your target for beef x dairy



# CALVING EASE, GROWTH, & CARCASS BULLS

**BLACK ANGUS**



**011AN02238 Sterling Precise \$18**

GL -9.1 | BW -1.1 | 200D +46 | 400D +86 | 600D +108  
CW +69 | EMA +3.1 | IMF +2.9

- ▲ Top 1% of breed for CE & BW
- ▲ Short gestation bull

**BLACK ANGUS**



**011AN01390 Diamond J Gus \$18**

GL +.1 | BW +2.1 | 200D +53 | 400D +91 | 600D +112  
CW +66 | EMA +2.9 | IMF +1.0

- ▲ Calving ease
- ▲ Low birth weight

**SIMMENTAL**



**011SM02069 Hook's Joker 8J \$18**

BW -.5 | WW +83.7 | YW +130.6  
CW +36.5 | MARB +.78 | REA +1.1

- ▲ Homozygous polled & black
- ▲ Calving ease, low birth weight & elite carcass merit

**AKAUSHI**



**Kaji \$18**

GL +.3 | BW +4.4 | 200D +27 | 400D +41 | 600D +66  
CW +54 | EMA -1.6 | IMF -.4

- ▲ Calving ease, growth, carcass quality

# Alta Australia Pty.

## Head Office Melbourne

03 8336 1458

Email: [info.au@altagenetics.com](mailto:info.au@altagenetics.com)

## Australia Sales Representatives

### PHILLIP MCKENNA

Nth VIC/NE/Northern NSW

0438 777 411

[phillip.mckenna@altagenetics.com](mailto:phillip.mckenna@altagenetics.com)

### CHRIS KELLY

Alta COW WATCH & North VIC

0459 600 658

[chris.kelly@altagenetics.com](mailto:chris.kelly@altagenetics.com)

### ANDREW MEDHURST

Nth VIC/SA/ South Coast NSW

0459 957 169

[andrew.medhurst@altagenetics.com](mailto:andrew.medhurst@altagenetics.com)

### KARIN COUCH

West VIC/SA

0448 634 533

[karin.couch@altagenetics.com](mailto:karin.couch@altagenetics.com)

### SIMON BOURKE

West VIC/SA

0428 416 444

[simon.bourke@altagenetics.com](mailto:simon.bourke@altagenetics.com)

### NATHAN MUGAVIN

West VIC/TAS

0461 531 068

[nathan.mugavin@altagenetics.com](mailto:nathan.mugavin@altagenetics.com)

### GARY JONES

Gippsland

0438 830 865

[gary.jones@altagenetics.com](mailto:gary.jones@altagenetics.com)

### WILLEM VAN ECK

Gippsland

0427 544 758

[willem.vaneck@altagenetics.com](mailto:willem.vaneck@altagenetics.com)

### BRETT SWEETNAM

Gippsland

0491 376 172

[brett.sweetnam@altagenetics.com](mailto:brett.sweetnam@altagenetics.com)

## General Manager

### GEOFF WATTS

0458 604 102

[geoffrey.watts@altagenetics.com](mailto:geoffrey.watts@altagenetics.com)

## National Sales Manager

### TONY SIMPSON

North VIC/NSW/WA/TAS

0427 341 458

[tony.simpson@altagenetics.com](mailto:tony.simpson@altagenetics.com)

## Office Staff

### JAYDE LEE

Operations & Alta COW WATCH Manager

0419 677 209

[jayde.lee@altagenetics.com](mailto:jayde.lee@altagenetics.com)

### KIRRILY LUMSDEN

Alta COW WATCH & Beef Sales Support

0428 529 275

[kirrily.lumsden@altagenetics.com](mailto:kirrily.lumsden@altagenetics.com)

### EMILY CAVILL

Dispatch Coordinator

0417 913 090

[emily.cavill@altagenetics.com](mailto:emily.cavill@altagenetics.com)