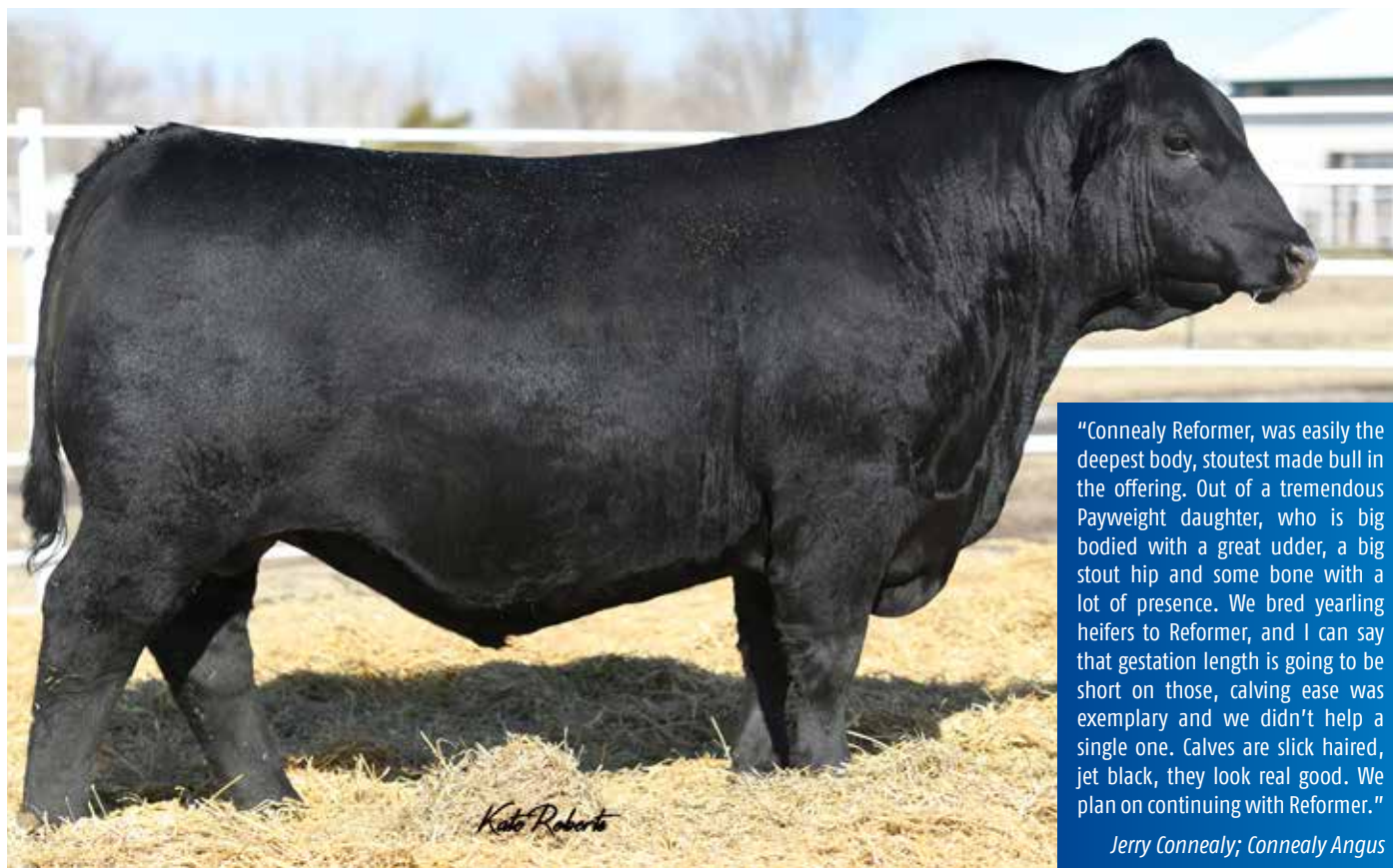


## REFORMER

011AN02348

Connealy Reformer <sup>PVPV</sup>

"Connealy Reformer, was easily the deepest body, stoutest made bull in the offering. Out of a tremendous Payweight daughter, who is big bodied with a great udder, a big stout hip and some bone with a lot of presence. We bred yearling heifers to Reformer, and I can say that gestation length is going to be short on those, calving ease was exemplary and we didn't help a single one. Calves are slick haired, jet black, they look real good. We plan on continuing with Reformer."

Jerry Connealy; Connealy Angus

## PEDIGREE

Connealy Confidence 0100  
Connealy Confidence Plus  
Elbanna of Conanga 1209

## Connealy Reformed

EF Commando 1366  
Ensa of Conanga 610  
Emmy of Conanga 4105

Basin Payweight 0065  
Basin Payweight 1682  
21AR O Lass 7017

## Jaycee of Conanga 6560

Connealy Mentor 7374  
Jaycee of Conanga 4660 096X  
Jaze of Conanga 234



- ▲ High selling bull of the Fall 2021 Connealy Angus Sale
- ▲ Offers more body and mass than most calving ease sires
- ▲ Designed to sire powerful sons and big bodied, productive females

## BULL INFORMATION

Registration #	USA19991422
Birthdate	19/04/2020
Genetic Testing	AMF,CAF,DDF,NHF,DWF,MAF,MHF,OHF,OSF,RGF

## SELECTION INDEX

	\$A	\$A-L
Index Value	\$263	\$440
Breed Average	\$197	\$340
Perc	3	2

	CED	CE Dtrs	GL	BW	200D	400D	600D	MCW	Milk	DTC	SS	CW	EMA	Rib	Rump	RBV %	IMF %	Doc	Claw	Foot Angle	Leg Angle
EBV	+3.3	+2.0	-6.7	+4.2	+67	+121	+143	+120	+19	-5.8	+1.6	+91	+10.7	-1.1	-2.9	+0.9	+1.2	+12	+0.62	+0.78	+0.96
Acc	49%	38%	65%	76%	78%	77%	74%	72%	72%	32%	71%	72%	71%	66%	61%	60%	72%	34%	75%	69%	54%
Perc	46	60	21	53	3	2	8	19	34	21	68	4	10	73	89	23	75	87	10	11	26

August 2023 TransTasman Angus Cattle Evaluation