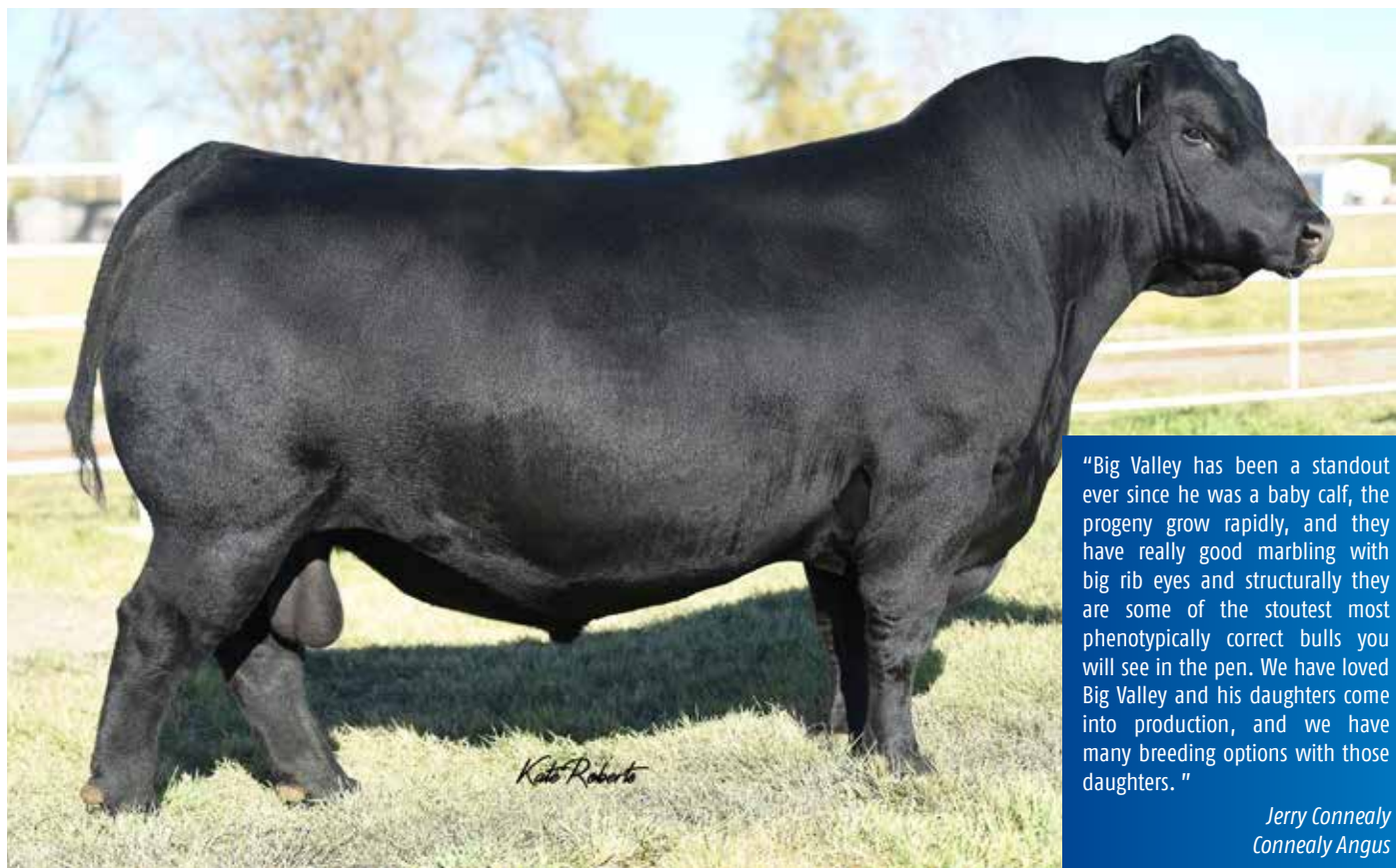


011AN01407

Connealy Big Valley <sup>PVPV</sup>



"Big Valley has been a standout ever since he was a baby calf, the progeny grow rapidly, and they have really good marbling with big rib eyes and structurally they are some of the stoutest most phenotypically correct bulls you will see in the pen. We have loved Big Valley and his daughters come into production, and we have many breeding options with those daughters."

Jerry Connealy  
Connealy Angus

- ▲ Will add performance and improve carcass merit
- ▲ Powerfully built sire
- ▲ More muscle, more shape, more depth



Progeny at Araluen Angus



Progeny at Araluen Angus

## PEDIGREE

Mogck Bullseye  
Hoover No Doubt  
Miss Blackcap Ellston J2

### Connealy Dry Valley

Summitcrest Complete 1P55  
Becca of Conanga 1617  
Brisha of Conanga 746 1237

Connealy Confidence 0100  
Connealy Greeley  
Precious of Conanga 0484

### Bunty Lay of Conanga 4930

G A R Predestined  
Bunty Lana of Conanga 4102  
Bunty Leah of Conanga 551



## BULL INFORMATION

Registration #	USA19249322
Birthdate	30/01/2018
Genetic Testing	AMF,CAF,DDF,NHF,DWF,MAF,MHF,OHF,OSF,RGF

## SELECTION INDEX

	\$A	\$A-L
Index Value	\$226	\$378
Breed Average	\$197	\$340
Perc	23	24

	CED	CE Dtrs	GL	BW	200D	400D	600D	MCW	Milk	DTC	SS	CW	EMA	Rib	Rump	RBV %	IMF %	Doc	Claw	Foot Angle	Leg Angle
EBV	-5.8	+1.2	-2.7	+6.7	+69	+126	+152	+127	+11	-3.1	+2.5	+90	+7.4	-1.3	-2.6	+0.8	+1.6	+29	+1.06	+1.00	+0.82
Acc	50%	38%	68%	78%	79%	78%	76%	74%	73%	31%	74%	74%	73%	69%	63%	61%	75%	32%	94%	92%	56%
Perc	94	68	80	93	2	1	4	13	92	87	33	4	35	77	86	28	64	15	87	57	4

August 2023 TransTasman Angus Cattle Evaluation