

ALTA GENETICS BEEF

Spring 2023



To our valued clients,

At Alta our mission is simple. **CREATE VALUE, BUILD TRUST AND DELIVER RESULTS.**

We are focused on bringing you a solution for your operation whilst ensuring you are well supported with advice and assistance from your local Alta Beef Advisors. We are dedicated to helping you make decisions that meet your needs with skilled Alta people in beef reproduction as well as skilled Alta people in the beef breeding business.

In recent times we've had great success with our existing breeder sires in Baldrige 38 Special, Ellingson Three Rivers, and the high fertility sire Woodhill Patent. We are pleased to be able offer these proven sires again this year as well as some new additions to the Alta Program in Connealy Reformer, BA7 Oaks Bold Ruler, a Connealy Confidence Plus son from a highly touted Baldrige 38 Special daughter & Ellingson Deep River the moderate birthweight Three Rivers son.

Our Australian standing sire highlights including Bellaspur Platinum P46 & Stellar Quicksilver Q7, a pair of bulls that can really offer the market proven pedigrees with proven performance.

We provide a cross section of bulls across breeds from Angus through to Wagyu and everything in between. Along with our range of genetics and breeds, we also provide experienced advice on how to get the most out of your program, creating more pregnancies, more live calves, more end value to your beef business.

If you would like to hear first about new sire releases, beef updates and the locations our beef team will be traveling to throughout the year, please sign up to our beef newsletter & follow along on our social media.

We look forward to seeing and hearing from you throughout the season. If there are any questions on any of the sires we have available, not only in Australia but worldwide please reach out to us at anytime.

Happy Breeding!

Your Alta Beef Team



Sign up for our
newsletter



Follow us on
facebook



CULMINATION

011AN02260

K C F Bennett Culmination PVPV

ANGUS



PEDIGREE

Connealy Consensus
K C F Bennett Consent Y75
K C F Miss Protege W148

K C F Bennett Summation

S S Objective T510 OT26
Thomas Patricia 9705
Thomas Patricia 71138

K C F Bennett Energizer
K C F Bennett Homestead
K C F Miss Quality P164

K C F Miss Homestead C452

Connealy Contrast
K C F Miss Contrast Z607
Thomas Patricia 9705



- ▲ This bull adds it all up in one package
- ▲ Exceptional calving ease, breed leading performance and carcass merit
- ▲ Top 1% all growth EBVs, Milk, CW + Indexes

BULL INFORMATION

Registration #	USA19749024
Birthdate	30/10/2019
Genetic Testing	AMF,CAF,DDF,NHF,DWF,MAF,MHF,OHF,OSF,RGF

SELECTION INDEX

	\$A	\$A-L
Index Value	\$290	\$475
Breed Average	\$197	\$340
Perc	1	1

	CED	CE Dtrs	GL	BW	200D	400D	600D	MCW	Milk	DTC	SS	CW	EMA	Rib	Rump	RBV %	IMF %	Doc	Claw	Foot Angle	Leg Angle
EBV	+6.5	+1.4	+0.0	+2.4	+73	+131	+163	+126	+28	-3.5	+1.3	+111	+12.5	+1.4	+1.7	+0.2	+2.4	-	+0.86	+1.12	+0.98
Acc	47%	37%	65%	77%	79%	78%	75%	73%	73%	30%	72%	73%	72%	67%	62%	60%	74%	-	75%	75%	49%
Perc	19	66	97	17	1	1	1	14	1	80	78	1	4	19	17	66	41	-	53	82	32

August 2023 TransTasman Angus Cattle Evaluation

POWERPLANT

011AN02355

ROSEDA POWERPLANT ^{PVPV}

PEDIGREE

- ▲ Uniquely combines calving ease, high growth & marbling in an attractive package
- ▲ Combines outstanding carcass genetics of Powerball x Prime Divine x Prophet
- ▲ Top 1% growth EBVs, CWT, \$A-L, Top 2% \$A
- ▲ Outcross marbling genetics

Quaker Hill Manning 4EX9
E W A Peyton 642
E W A 444 of 968 Progress

Roseda Powerball23 F091

V A R Discovery 2240
Roseda Blackcap B103 D118
Roseda Blackcap 0134 B103

Rito 9Q20 of Rita 5F56 GHM
Welytok Prime Divine 6D91
Welytok Total 10 Erianna 3B2

Roseda Ms Flora Divine F113

G A R Prophet
Roseda Ms Flora Prophet B126
Roseda Ms Flora Rito S033



BULL INFORMATION

Registration #	USA19881320
Birthdate	13/10/2020
Genetic Testing	AMF,CAF,DDF,NHF,DWF,MAF,MHF,OHF,OSF,RGF

SELECTION INDEX

	\$A	\$A-L
Index Value	\$267	\$463
Breed Average	\$197	\$340
Perc	2	1

	CED	CE Dtrs	GL	BW	200D	400D	600D	MCW	Milk	DTC	SS	CW	EMA	Rib	Rump	RBV %	IMF %	Doc	Claw	Foot Angle	Leg Angle
EBV	+1.5	+1.7	+0.2	+4.1	+78	+142	+176	+151	+19	-3.3	+1.1	+100	+7.1	+0.8	+0.0	-1.1	+4.3	-	+1.00	+0.80	+1.04
Acc	50%	39%	66%	77%	79%	78%	76%	74%	72%	32%	72%	73%	72%	68%	63%	61%	74%	-	69%	68%	53%
Perc	61	63	98	51	1	1	1	3	32	84	84	1	38	30	44	99	8	-	79	14	52

August 2023 TransTasman Angus Cattle Evaluation



- ▲ Superior carcass & marbling – Top 3% EMA & 2% IMF
- ▲ Attractive sire with shape & muscling
- ▲ Pedigree stacked with excellent structural EBVs
- ▲ First calf out of an up-and-coming young donor – combines femininity, structure & elite EBVs in a moderate frame
- ▲ Breed leading docility



PEDIGREE

G A R Progress
G A R Momentum
G A R Big Eye 1770
Lawsons Momentous M518
T E Mania Africa A217
Lawsons Africa H229
Lawsons Rocknd Ambush E1103
C R A Bextor 872 5205 608
G A R Prophet
G A R Objective 1885
Stellar Vicky Prophet N9
Sitz Upward 307R
Aberdeen Estate Vicky G93
KO Vicky C44

BULL INFORMATION

Registration #	JCAQ7
Birthdate	30/07/2019
Genetic Testing	AMF,CAF,DDF,NHF,DWF,MAF,MHF,OHF,OSF,RGF

SELECTION INDEX

	\$A	\$A-L
Index Value	\$242	\$365
Breed Average	\$197	\$340
Perc	11	34

	CED	CE Dtrs	GL	BW	200D	400D	600D	MCW	Milk	DTC	SS	CW	EMA	Rib	Rump	RBV %	IMF %	Doc	Claw	Foot Angle	Leg Angle
EBV	-6.2	-2.0	-6.4	+4.6	+64	+108	+135	+98	+22	-3.4	+1.1	+76	+13.2	-1.0	-2.2	+0.0	+5.4	+41	+0.80	+0.76	+0.94
Acc	69%	58%	83%	83%	81%	80%	80%	77%	69%	50%	81%	72%	70%	71%	71%	66%	72%	69%	81%	81%	72%
Perc	94	88	24	24	6	9	17	53	14	82	84	21	3	71	81	76	2	2	40	9	20

August 2023 TransTasman Angus Cattle Evaluation

DEEP RIVER

011AN02280

Ellingson Deep River ^{PVPV}

NEW



- ▲ Lead off Three Rivers son at Ellingson sale
- ▲ Displays tremendous power and mass packed into a bold-middled, sharp-fronted package
- ▲ Combines phenotypic prominence, outstanding performance and maternal heritage into one package
- ▲ Top 1% growth EBVs, MCW, CW + \$A-L

PEDIGREE

CTS Remedy 1T01
 Ellingson Homestead 6030
 EA Erica 1082
Ellingson Three Rivers 8062
 Ellingson Chaps 4095
 EA Emblynnette 6279
 EA Emblynnette 2159
 Koupal Juneau 797
 Koupal Advance 28
 Koupal Ebonette 734
EA Primrose 5083
 LT Territory 5824 of EA
 EA Primrose 3102
 EA Primrose 9155



BULL INFORMATION

Registration #	USA19853339
Birthdate	02/03/2020
Genetic Testing	AMF,CAF,DDF,NHF,DWF,MAF,MHF,OHF,OSF,RGF

SELECTION INDEX

	\$A	\$A-L
Index Value	\$265	\$485
Breed Average	\$197	\$340
Perc	2	1

	CED	CE Dtrs	GL	BW	200D	400D	600D	MCW	Milk	DTC	SS	CW	EMA	Rib	Rump	RBV %	IMF %	Doc	Claw	Foot Angle	Leg Angle
EBV	+5.1	+5.8	-5.5	+5.7	+77	+141	+182	+170	+19	-4.0	+3.1	+110	+8.0	-2.3	-3.4	+0.7	+1.7	+19	+0.86	+0.72	+0.94
Acc	49%	34%	69%	79%	80%	78%	76%	74%	73%	27%	73%	74%	73%	68%	62%	60%	74%	27%	80%	80%	53%
Perc	30	21	37	82	1	1	1	1	32	69	16	1	28	91	92	33	61	52	53	6	20

August 2023 TransTasman Angus Cattle Evaluation

THREE RIVERS

011AN02263

Ellingson Three Rivers 8062 ^{PVPV}

ANGUS



"We made the decision to use Ellingson Three Rivers for his frame, growth and structural scores. His calves have great shape and plenty of punch."

Scott Finlay, Granite Ridge Angus
Avenue Range, SA

- ▲ Breed leader for weaning & yearling growth
- ▲ Sires big bodied, stout, high performing cattle
- ▲ Top 1% Foot Angle + Top 9% Claw
- ▲ Popular high performance sire with exceptional structure – Top 1% growth EBVs, CW, \$A-L

PEDIGREE

Connealy Thunder
CTS Remedy 1T01
CTS 7V03 Bellemere Maid 9T02
Ellingson Homestead 6030
LT Territory 5824 of EA
EA Erica 1082
S A V Alliance 2606
S A V Resource 1441
Ellingson Chaps 4095
E A Blackcap 0360
EA Emblynette 6279
Sitz Upward 307R
EA Emblynette 2159
EA Emblynette 434



Progeny: Granite Ridge Mistress U138 SJK23U138 Progeny: Merridale Vicky T87 CMD22T87

BULL INFORMATION

Registration #	USA19203618
Birthdate	20/02/2018
Genetic Testing	AMF,CAF,DDF,NHF,DWF,MAF,MHF,OHF,OSF,RGF

SELECTION INDEX

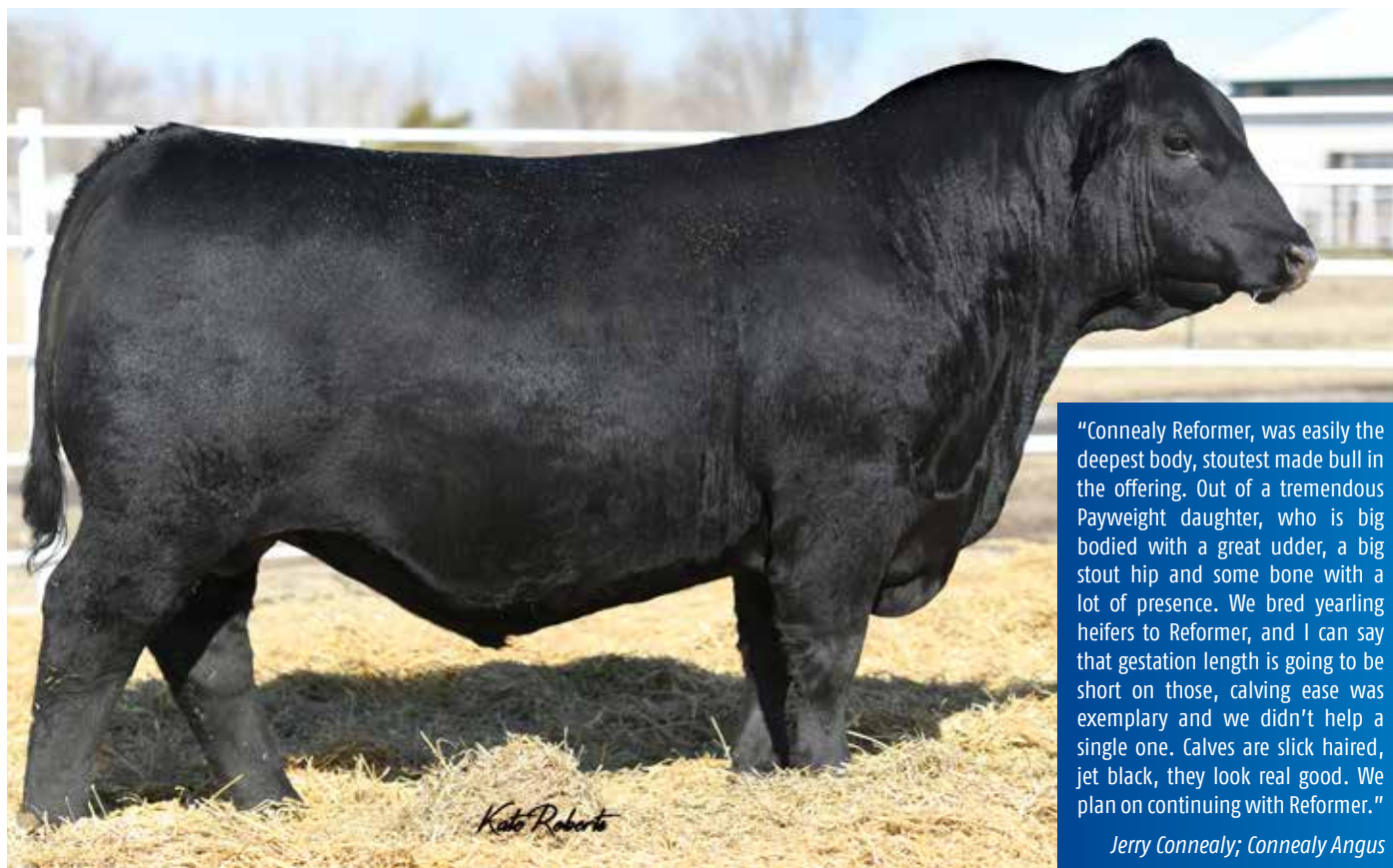
	\$A	\$A-L
Index Value	\$248	\$428
Breed Average	\$197	\$340
Perc	7	4

	CED	CE Dtrs	GL	BW	200D	400D	600D	MCW	Milk	DTC	SS	CW	EMA	Rib	Rump	RBV %	IMF %	Doc	Claw	Foot Angle	Leg Angle
EBV	-6.0	+2.6	-4.0	+8.3	+78	+142	+176	+157	+16	-3.6	+1.2	+108	+8.8	-2.4	-4.2	+0.8	+1.6	+16	+0.60	+0.48	+0.92
Acc	64%	41%	97%	96%	88%	85%	81%	79%	74%	30%	73%	77%	73%	70%	65%	61%	74%	47%	96%	94%	53%
Perc	94	54	62	99	1	1	1	2	56	78	81	1	21	92	96	28	64	68	9	1	16

August 2023 TransTasman Angus Cattle Evaluation

REFORMER

011AN02348

Connealy Reformer ^{PVPV}

"Connealy Reformer, was easily the deepest body, stoutest made bull in the offering. Out of a tremendous Payweight daughter, who is big bodied with a great udder, a big stout hip and some bone with a lot of presence. We bred yearling heifers to Reformer, and I can say that gestation length is going to be short on those, calving ease was exemplary and we didn't help a single one. Calves are slick haired, jet black, they look real good. We plan on continuing with Reformer."

Jerry Connealy; Connealy Angus

PEDIGREE

Connealy Confidence 0100
Connealy Confidence Plus
Elbanna of Conanga 1209

Connealy Reformed

EF Commando 1366
Ensa of Conanga 610
Emmy of Conanga 4105

Basin Payweight 0065
Basin Payweight 1682
21AR O Lass 7017

Jaycee of Conanga 6560

Connealy Mentor 7374
Jaycee of Conanga 4660 096X
Jaze of Conanga 234



- ▲ High selling bull of the Fall 2021 Connealy Angus Sale
- ▲ Offers more body and mass than most calving ease sires
- ▲ Designed to sire powerful sons and big bodied, productive females

BULL INFORMATION

Registration #	USA19991422
Birthdate	19/04/2020
Genetic Testing	AMF,CAF,DDF,NHF,DWF,MAF,MHF,OHF,OSF,RGF

SELECTION INDEX

	\$A	\$A-L
Index Value	\$263	\$440
Breed Average	\$197	\$340
Perc	3	2

	CED	CE Dtrs	GL	BW	200D	400D	600D	MCW	Milk	DTC	SS	CW	EMA	Rib	Rump	RBV %	IMF %	Doc	Claw	Foot Angle	Leg Angle
EBV	+3.3	+2.0	-6.7	+4.2	+67	+121	+143	+120	+19	-5.8	+1.6	+91	+10.7	-1.1	-2.9	+0.9	+1.2	+12	+0.62	+0.78	+0.96
Acc	49%	38%	65%	76%	78%	77%	74%	72%	72%	32%	71%	72%	71%	66%	61%	60%	72%	34%	75%	69%	54%
Perc	46	60	21	53	3	2	8	19	34	21	68	4	10	73	89	23	75	87	10	11	26

August 2023 TransTasman Angus Cattle Evaluation

011AN01498

Woodhill Patent ^{PVPV}



- ▲ Calving ease sire – ideal for heifer program
- ▲ Tremendous amount of body & mass with exceptional growth
- ▲ Descendant of Miss Traveler 58, the foundation of the Woodhill Evergreen family



Progeny: Araluen T110



Progeny: NKS21S58 at DSK Angus

PEDIGREE

Hoover Dam
Baldrige Xpand x743
Baldrige Queen S87

Baldrige Colonel C251

Styles Upgrade J59
Baldrige Isabel Y69
Baldrige Isabel T935

Basin Franchise P142
EF Complement 8088
EF Everelda Entense 6117

Woodhill Evergreen Y10-C62

S A V Final Answer 0035
Woodhill Evergreen W269-Y10
Woodhill Evergreen 22P-W269



BULL INFORMATION

Registration #	USA19199070
Birthdate	02/02/2018
Genetic Testing	AMF,CAF,DDF,NHF,DWF,MAF,MHF,OHF,OSF,RGF

SELECTION INDEX

	\$A	\$A-L
Index Value	\$248	\$445
Breed Average	\$197	\$340
Perc	7	2

	CED	CE Dtrs	GL	BW	200D	400D	600D	MCW	Milk	DTC	SS	CW	EMA	Rib	Rump	RBV %	IMF %	Doc	Claw	Foot Angle	Leg Angle
EBV	+9.6	+10.5	-7.2	+2.3	+66	+121	+150	+126	+18	-5.3	+3.0	+80	+4.0	-1.8	-2.7	+0.1	+1.7	+25	+0.78	+1.08	+1.00
Acc	65%	47%	94%	94%	91%	87%	87%	81%	75%	41%	82%	80%	75%	73%	69%	66%	77%	64%	79%	80%	64%
Perc	4	1	15	16	3	2	2	14	42	33	18	14	77	86	87	71	61	27	36	75	38

August 2023 TransTasman Angus Cattle Evaluation

011AN02285

DL Zoom

NEW



"The part we love about Zoom is that he has helped every cow he has bred. He is a good breeder, sound and holds his condition well when out with cows. We like the rib, and the substance and the way he is made in the rear end. Zoom has done a lot of things right. Length of body is what comes to mind when we talk about his progeny, and they are real square made and they are super sound with plenty of rib."

Bob Tiedeman
Baldrige-Tiedeman Angus

- ▲ Big footed and stout made with exceptional structure
- ▲ A physical powerhouse with superior length, width and thickness



Progeny at Baldrige-Tiedeman Angus, Nebraska



Progeny at Baldrige-Tiedeman Angus, Nebraska

PEDIGREE

DL Sonic 444
DL Dually
DL Incentive 2103
DL Automatic 1088
Basin Rainmaker 747L
DL Barbara 150
DL Barbara 768
Connealy Consensus 7229
DL Consensus 254
DL Miss Winton 451
DL Princess 1278
DL Final Grandview 53
DL Princess 286
DL Princess 700



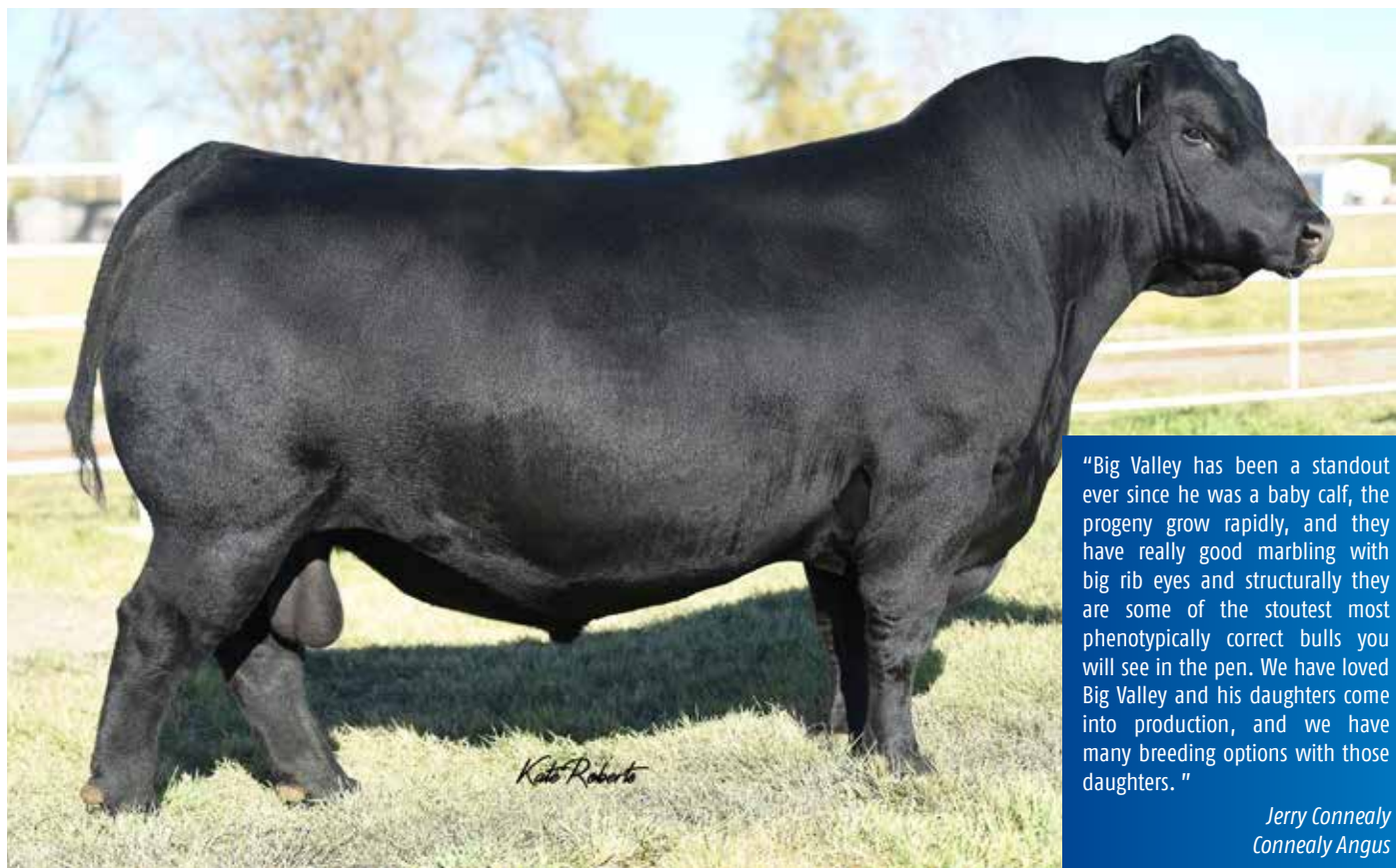
BULL INFORMATION

Registration #	USA19867959
Birthdate	01/05/2020
Genetic Testing	AMF-CAF-D2F-DDF-M1F-NHF-OHF-OSF-RDF

PRODUCTION									MATERNAL								
	CED	BW	WW	YW	RADG	DMI	YH	SC	HP	CEM	MILK	MW	MH	\$EN			
EPD	-1	+3.3	+106	+180	+30	+2.34	+1.1	+73	+15.9	+10	+22	+138	+1.3	-52			
Acc	.38	.59	.46	.41	.30	.30	.42	.47	.18	.28	.30	.34	.37				
Perc	95	90	1	1	15	95	4	60	10	35	75	1	1	95			
MANAGEMENT					CARCASS					\$VALUES							
	DOC	CLAW	ANGLE	PAP	HS	CW	MARB	REA	FAT	\$AxH	\$AxJ	\$M	\$W	\$F	\$G	\$B	\$C
EPD	+29	+47	+42	+05	+69	+88	+61	+84	+025	+99	+100	+70	+82	+118	+52	+171	+292
Acc	.32	.31	.31	.22	.25	.39	.33	.33	.29								
Perc	10	40	20	25	80	1	45	20	70	45	35	25	3	5	40	15	15

011AN01407

Connealy Big Valley ^{PVPV}



"Big Valley has been a standout ever since he was a baby calf, the progeny grow rapidly, and they have really good marbling with big rib eyes and structurally they are some of the stoutest most phenotypically correct bulls you will see in the pen. We have loved Big Valley and his daughters come into production, and we have many breeding options with those daughters."

Jerry Connealy
Connealy Angus

- ▲ Will add performance and improve carcass merit
- ▲ Powerfully built sire
- ▲ More muscle, more shape, more depth



Progeny at Araluen Angus



Progeny at Araluen Angus

PEDIGREE

Mogck Bullseye
Hoover No Doubt
Miss Blackcap Ellston J2

Connealy Dry Valley

Summitcrest Complete 1P55
Becca of Conanga 1617
Brisha of Conanga 746 1237

Connealy Confidence 0100
Connealy Greeley
Precious of Conanga 0484

Bunty Lay of Conanga 4930

G A R Predestined
Bunty Lana of Conanga 4102
Bunty Leah of Conanga 551



BULL INFORMATION

Registration #	USA19249322
Birthdate	30/01/2018
Genetic Testing	AMF,CAF,DDF,NHF,DWF,MAF,MHF,OHF,OSF,RGF

SELECTION INDEX

	\$A	\$A-L
Index Value	\$226	\$378
Breed Average	\$197	\$340
Perc	23	24

	CED	CE Dtrs	GL	BW	200D	400D	600D	MCW	Milk	DTC	SS	CW	EMA	Rib	Rump	RBV %	IMF %	Doc	Claw	Foot Angle	Leg Angle
EBV	-5.8	+1.2	-2.7	+6.7	+69	+126	+152	+127	+11	-3.1	+2.5	+90	+7.4	-1.3	-2.6	+0.8	+1.6	+29	+1.06	+1.00	+0.82
Acc	50%	38%	68%	78%	79%	78%	76%	74%	73%	31%	74%	74%	73%	69%	63%	61%	75%	32%	94%	92%	56%
Perc	94	68	80	93	2	1	4	13	92	87	33	4	35	77	86	28	64	15	87	57	4

August 2023 TransTasman Angus Cattle Evaluation

DOUBLE PLAY

011AN01473

44 Double Play ^{PVPV}

PEDIGREE

Basin Payweight 0065
 Basin Payweight 1682
 21AR O Lass 7017

TEX Playbook 5437

Summitcrest Complete 1P55
 Rita 1C43 of 9M26 Complete
 Rita 9M26 of Rita 5F56 Pred

A A R Ten X 7008 S A
 V A R Discovery 2240
 Deer Valley Rita 0308

Vintage Rita 5008

Connealy Consensus 7229
 V A R Rita 3160
 Deer Valley Rita 7105

- ▲ Big bodied power sire
- ▲ Outstanding carcass merit
- ▲ Breed leading growth and carcass values
- ▲ Top 1% growth EBVs, CW, and Indexes

BULL INFORMATION

Registration #	USA19371100
Birthdate	11/10/2018
Genetic Testing	AMF,CAF,DDF,NHF,DWF,MAF,MHF,OHF,OSF,RGF

SELECTION INDEX

	\$A	\$A-L
Index Value	\$277	\$468
Breed Average	\$197	\$340
Perc	1	1

	CED	CE Dtrs	GL	BW	200D	400D	600D	MCW	Milk	DTC	SS	CW	EMA	Rib	Rump	RBV %	IMF %	Doc	Claw	Foot Angle	Leg Angle
EBV	+0.0	+6.7	-6.6	+5.2	+82	+138	+165	+143	+19	-4.4	+2.1	+106	+8.8	-2.4	-3.1	+0.3	+1.9	+15	+1.04	+0.86	+0.72
Acc	54%	44%	68%	77%	79%	78%	76%	74%	74%	36%	73%	74%	73%	69%	64%	62%	75%	39%	74%	74%	61%
Perc	72	14	22	74	1	1	1	5	36	58	48	1	21	92	90	59	55	73	85	24	1

August 2023 TransTasman Angus Cattle Evaluation

011AN01509

Baldrige Badger ^{PVPV}



PEDIGREE

- ▲ No Doubt x Isabel Y69 – A winning combination!
- ▲ This big scrotal, docile, high performing, muscular stud will be an asset to your program
- ▲ As a mature bull Badger Impressed Australian breeders touring the USA

MOGCK Sure Shot
MOGCK Bullseye
MOGCK Mary 1255

Hoover No Doubt
Sydgen C C & 7
Miss Blackcap Ellston J2
Miss Blackcap Ellston D154

Sitz Upward 307R
Styles Upgrade 159
Plainview Lassie 71B

Baldrige Isabel Y69
Baldrige Kabook K243
Baldrige Isabel T935
Baldrige Isabel P4527

BULL INFORMATION

Registration #	USA19478648
Birthdate	12/05/2018
Genetic Testing	AMF,CAF,DDF,NHF,DWF,MAF,MHF,OHF,OSF,RGF

SELECTION INDEX

	\$A	\$A-L
Index Value	\$256	\$426
Breed Average	\$197	\$340
Perc	5	4

	CED	CE Dtrs	GL	BW	200D	400D	600D	MCW	Milk	DTC	SS	CW	EMA	Rib	Rump	RBV %	IMF %	Doc	Claw	Foot Angle	Leg Angle
EBV	-4.5	+1.1	+0.3	+6.7	+75	+132	+165	+138	+14	-4.5	+2.9	+97	+10.5	-2.5	-3.6	+1.4	+0.5	+55	+52	+0.70	+0.86
Acc	65%	49%	83%	86%	85%	82%	83%	80%	77%	41%	77%	78%	76%	73%	69%	68%	78%	63%	75%	75%	60%
Perc	91	68	98	93	1	1	1	6	78	55	21	2	11	93	94	7	89	1	4	4	7

August 2023 TransTasman Angus Cattle Evaluation

TRIBUNAL

011AN02293

HF Tribunal ^{PVPV}

BULL INFORMATION

Registration #	CAN2151993
Birthdate	29/01/2020
Genetic Testing	AMF,CAF,DDF,NHF,DWF,MAF,MHF,OHF,OSF,RGF

- ▲ Bred from the heart of Hamilton Farms Angus
- ▲ Breed leader for structure & docility
- ▲ Sire stack of greats!

AVF Breakout 5409
May-Way Breakout 1310
May-Way Lady Bando 086

HF Alcatraz 60F

HF Tiger 5T
HF Mayflower 191Z
HF Mayflower 78P

HF Kodiak 5R
HF Tiger 5T
HF Echo 84R

HF Evening Tinge 118Z

Riverbend Powerline 0050
HF Evening Tinge 55N
HF Evening Tinge 106K

SELECTION INDEX	\$A	\$A-L
Index Value	\$163	\$322
Breed Average	\$197	\$340
Perc	83	67

	CED	CE Dtrs	GL	BW	200D	400D	600D	MCW	Milk	DTC	SS	CW	EMA	Rib	Rump	RBV %	IMF %	Doc	Claw	Foot Angle	Leg Angle
EBV	-4.9	+0.3	-4.0	+6.6	+58	+108	+137	+144	+19	-5.1	+0.6	+83	+1.2	-1.4	-1.6	+0.4	+0.4	+34	+0.46	+0.84	+1.18
Acc	52%	39%	71%	79%	80%	79%	77%	74	74%	33%	74%	74%	73%	69%	64%	62%	74%	40%	59%	60%	46%
Perc	92	75	62	92	17	9	14	4	30	38	93	11	95	79	73	53	91	7	2	20	88

August 2023 TransTasman Angus Cattle Evaluation

MEGAHIT

011AN01314

Jindra Megahit ^{PVPV}

- ▲ A true power bull
- ▲ Scale crushing performance
- ▲ Superior phenotype – adds size & scale to offspring

TC Stockman 365
Hoff Investor S C 929
Hoff Miss Renovation S C 856

Hoff Blockbuster SC 929 161Z

Shady Brook Prime 251F
Hoff Christine S C 7195 929
Hoff Bandi S C 009

Hoff Hi Flyer S C 7134
Hoff Heartland S C 456
Hoff Miss S C 1112

Hoff Sweetheart S C 216

Pack Power Scotch Cap 889
Hoff Lady Ace S C 884
Hoff Butterscotch S C 524

BULL INFORMATION

Registration #	USA17731559
Birthdate	09/01/2013
Genetic Testing	AMF,CAF,DDF,NHF,DWF,MAF,MHF,OHF,OSF,RGF

SELECTION INDEX	\$A	\$A-L
Index Value	\$132	\$269
Breed Average	\$197	\$340
Perc	95	90

	CED	CE Dtrs	GL	BW	200D	400D	600D	MCW	Milk	DTC	SS	CW	EMA	Rib	Rump	RBV %	IMF %	Doc	Claw	Foot Angle	Leg Angle
EBV	-4.8	+3.3	-3.2	+6.0	+57	+93	+128	+135	+6	-2.1	+2.3	+75	+4.6	-6.0	-7.5	+1.4	+0.9	+25	+1.26	+0.86	+1.14
Acc	64%	43%	95%	92%	89%	89%	89%	82%	76%	39%	86%	79%	76%	75%	71%	67%	77%	55%	84%	85%	59%
Perc	92	47	74	86	19	40	28	8	99	95	40	24	70	99	99	7	82	27	99	24	81

August 2023 TransTasman Angus Cattle Evaluation

SERGEANT

011AN01536

Poss Sergeant ^{PVPV}



BULL INFORMATION

Registration #	USA19454927
Birthdate	03/03/2019
Genetic Testing	AMF,CAF,DDF,NHF,DWF,MAF,MHF,OHF,OSF,RGF

- ▲ High performance Colonel son with breed leading growth genetics

- ▲ Top 3% growth EBVs + Indexes

Hoover Dam
Baldridge Xpand x743
Baldridge Queen S87

Baldridge Colonel C251

Styles Upgrade J59
Baldridge Isabel Y69
Baldridge Isabel T935

Mytty In Focus
A A R Ten X 7008 S A
A A R Lady Kelton 5551

STF Rita B405

Sitz Upward 307R
STF Rita Y105
S V F Rita R080

SELECTION INDEX	\$A	\$A-L
Index Value	\$260	\$458
Breed Average	\$197	\$340
Perc	3	1

	CED	CE Dtrs	GL	BW	200D	400D	600D	MCW	Milk	DTC	SS	CW	EMA	Rib	Rump	RBV %	IMF %	Doc	Claw	Foot Angle	Leg Angle
EBV	+7.9	+7.4	-4.3	+3.5	+68	+129	+159	+130	+24	-4.5	+3.1	+88	+8.8	-0.8	-1.8	+0.3	+1.5	+18	+1.14	+1.00	+1.02
Acc	56%	45%	74%	79%	80%	79%	77%	75%	75%	38%	74%	75%	74%	70%	65%	64%	76%	42%	72%	72%	59%
Perc	11	10	57	37	2	1	2	11	8	55	16	6	21	67	76	59	67	56	94	57	45

August 2023 TransTasman Angus Cattle Evaluation

WRANGLER

011AN01535

Poss Wrangler ^{PVPV}



- ▲ Crowd favourite at 2020 Poss Sale

- ▲ Moderate framed, muscular and powerfully built

- ▲ Sound footed with fluid movement

Basin Payweight 0065
Basin Payweight 1682
21AR O Lass 7017

Poss Maverick

Poss Hoover Dam 2509
Poss Pride 5163
Poss Pride 9526

MCATL Triple Stack
Connealy Power Play
Boka Gena of Conanga 783

Poss Elmaretta 648

Connealy All Around
Poss Elmaretta 9104
Poss Elmaretta 227

"Wrangler was a standout the year we sold him. Everyone who saw him that year saw he was a real rugged made bull, a lot of middle, super sound made, and we have some really good daughters in the herd now. They are easy fleshing, shed out well, with good udders and they are fertile. Progeny are well made, with a big hip, and are long bodied. We think Wrangler can help a lot of breeders as he can add a lot of bone & structure."

Poss Angus

BULL INFORMATION

Registration #	USA19448649
Birthdate	08/02/2019
Genetic Testing	AMF,CAF,DDF,NHF,DWF,MAF,MHF,OHF,OSF,RGF

SELECTION INDEX	\$A	\$A-L
Index Value	\$242	\$407
Breed Average	\$197	\$340
Perc	11	9

	CED	CE Dtrs	GL	BW	200D	400D	600D	MCW	Milk	DTC	SS	CW	EMA	Rib	Rump	RBV %	IMF %	Doc	Claw	Foot Angle	Leg Angle
EBV	-0.3	+2.7	-6.2	+4.8	+69	+122	+148	+127	+22	-3.6	+2.8	+89	+9.5	-3.0	-5.1	+0.9	+2.6	+27	+0.90	+0.88	+0.96
Acc	52%	39%	67%	77%	79%	78%	76%	74%	73%	32%	74%	73%	72%	68%	63%	62%	74%	39%	81%	80%	64%
Perc	74	53	27	66	2	2	5	13	14	78	23	5	16	96	99	23	36	20	61	28	26

August 2023 TransTasman Angus Cattle Evaluation

BALDRIDGE 38 SPECIAL PROGENY IN AUSTRALIA

"38 Special has proven to be one of the most outstanding bulls we have used in recent years. In the avalanche of Isabel Y96 descendants that have recently flooded in from the US he has given us the most bang for our buck of all we have sampled. His sons are quiet, structurally well put together, whilst provide calving ease without sacrificing growth and muscle. His daughters have risen to the top of our herd on the back of their excellent phenotype and paperwork with a number finding their way into the nucleus of our herd."

Simon Falkiner; Murdeduke Angus



Murdeduke 38 Special S393



Alummy Creek 38 Special S092

"We inspected Baldridge 38 Special in the US back in 2016 and we have been very happy with how he has worked in our herd. 38 Special has brought the added bonus of Isabel Y69 maternal magic into our cow herd with easy keeping daughters and granddaughters that really perform to add kilos & quality into his calves."

38 Special has produced thick, deep bodied, easy doing well muscled sons for us that have been real commercial producer favourites for his balance of calving ease and progeny performance. 38 Special may bring a touch more frame and length to his progeny and they are very profitable commercially relevant cattle for the Australian industry. We are not at all surprised to see the impact & popularity Baldridge 38 Special sons are having around the country."

*Colin Keevers and Dr Lisa Martin BVSc
Alummy Creek Angus, Tenterfield*

"38 Special was researched and selected for AI use due to his balance of Calving Ease, Explosive Growth, Moderate MCW, High EMA and favourable foot data. His progeny are cut from the same mould. 38 Special calves are easily born, grow like steam, good footed and are particularly well muscled."

*Ben Glatz
Glatz Black Angus*



Glatz Black Angus 38 Special R32



3RLS Nebraska T015

"We continue to be impressed by the 38 Special progeny at 3R. To mind he is the Y69 son that best covers all the bases. His progeny perform well, are structurally sound and all with such an attractive phenotype. When I think about the requirements of the commercial Cattleman 38 Special would be one of those rare bulls that you could blanket mate to with absolute confidence."

Geoff Birchnell - 3R Livestock; Loomberah, NSW

38 SPECIAL

ANGUS

011AN01256

Baldrige 38 Special ^{PVPV}



- ▲ Australian progeny have excelled – high breeder satisfaction
- ▲ Balanced and attractive EBVs
- ▲ Reliable proven calving ease/ performance sire
- ▲ The proven performer from the highly sought after Y69 flush

PEDIGREE

Basin Franchise P142
EF Complement 8088
EF Everelda Entense 6117

EF Commando 1366
B/R Ambush 28
Riverbend Young Lucy W1470
Riverbend Young Lucy T1080

Sitz Upward 307R
Styles Upgrade 159
Plainview Lassie 71B
Baldrige Isabel Y69
Baldrige Kaboom K243 KCF
Baldrige Isabel T935
Baldrige Isabel P4527



BULL INFORMATION

Registration #	USA18229487
Birthdate	01/13/2015
Genetic Testing	AMF,CAF,DDF,NHF,MAF,OSF,RGF

SELECTION INDEX

	\$A	\$A-L
Index Value	\$243	\$420
Breed Average	\$197	\$340
Perc	10	5

	CED	CE Dtrs	GL	BW	200D	400D	600D	MCW	Milk	DTC	SS	CW	EMA	Rib	Rump	RBV %	IMF %	Doc	Claw	Foot Angle	Leg Angle
EBV	+8.4	+6.6	-5.5	+2.6	+62	+108	+142	+112	+20	-4.9	+2.7	+70	+7.3	+0.8	-0.9	-0.2	+2.7	+16	+0.62	+0.78	+0.86
Acc	90%	73%	99%	99%	98%	98%	98%	95%	92%	55%	97%	90%	88%	87%	86%	81%	88%	98%	99%	99%	94%
Perc	8	15	37	20	8	10	9	30	27	43	26	39	36	30	61	85	33	67	10	11	7

August 2023 TransTasman Angus Cattle Evaluation

PACESETTER

011AN01340

KR Pacesetter ^{SVSV}

BULL INFORMATION

Registration #	USA18874634
Birthdate	15/02/2017
Genetic Testing	AMF,CAF,DDF,NHF,DWF,MAF,MHF,OHF,OSF,RGF

	CED	CE Dtrs	GL	BW	200D	400D	600D	MCW	Milk	DTC	SS	CW	EMA	Rib	Rump	RBV %	IMF %	Doc	Claw	Foot Angle	Leg Angle
EBV	+0.0	+4.4	-7.9	+6.9	+79	+138	+177	+163	+16	-4.3	+3.7	+105	+6.5	-2.9	-4.5	+0.7	+1.1	+17	+0.98	+0.90	+0.94
Acc	56%	35%	86%	86%	82%	79%	76%	74%	71%	25%	71%	73%	71%	66%	59%	58%	74%	40%	68%	68%	54%
Perc	72	35	10	94	1	1	1	1	56	61	7	1	46	96	97	33	77	63	76	32	20

August 2023 TransTasman Angus Cattle Evaluation

- ▲ Outcross pedigree & a phenotypic standout
- ▲ Offers extra length of body and deep flank
- ▲ Short gestation with growth & fertility

SydGen 928 Destination 5420
 Prairie Pride Next Step 2036
 Flying V Miss Pride 426

RBM Step Ahead C80

EXAR 263C
 Basin Charisma U691
 Basin Charisma 4866

Sitz Dash 10277
 Barstow Cash
 Barstow Queen W16

KR Blackbird 4295

Summitcrest DARTH 0X19
 WK Blackbird 2250
 Summitcrest Blackbird 22W1

SELECTION INDEX	\$A	\$A-L
Index Value	\$249	\$450
Breed Average	\$197	\$340
Perc	7	1

HALLMARK

ASCOT CATTLE CO

Ascot Hallmark H147 ^{PVPV}

BULL INFORMATION

Registration #	QQFH147
Birthdate	05/08/2012
Genetic Testing	AMFU,CAFU,DDF,NHFU

	CED	CE Dtrs	GL	BW	200D	400D	600D	MCW	Milk	DTC	SS	CW	EMA	Rib	Rump	RBV %	IMF %	Doc	Claw	Foot Angle	Leg Angle
EBV	-5.6	+3.5	-5.2	+7.4	+59	+108	+152	+131	+15	-5.7	+3.6	+84	-2.4	+0.8	+0.7	-0.8	+2.6	+13	+0.44	+0.82	+1.02
Acc	94%	84%	98%	99%	98%	98%	98%	97%	97%	77%	98%	96%	95%	95%	95%	93%	95%	97%	95%	95%	93%
Perc	93	45	42	97	13	9	4	10	70	23	8	9	99	30	31	97	36	84	2	17	45

August 2023 TransTasman Angus Cattle Evaluation

- ▲ Powerful, heavy muscled with superior structure
- ▲ Without fail, progeny inherit incredible length, easy fleshing and exceptional performance
- ▲ Maternal strength

Te Mania Yorkshire Y437
 Te Mania Berkley B1
 Te Mania Lowan Z53

Te Mania Emperor

B T Ultravox 297E
 Te Mania Lowan Z74
 Te Mania Lowan V201

Booroomooka Neutron A238
 Millah Murrah Digby D108
 Millah Murrah Flower A70

Millah Murrah Brenda F123

Te Mania Infinity 04 379
 Millah Murrah Brenda D113
 Millah Murrah Brenda B21



SELECTION INDEX	\$A	\$A-L
Index Value	\$187	\$344
Breed Average	\$197	\$340
Perc	65	51

BOLD RULER

011AN02345

BA7 Oaks Bold Ruler

NEW

ANGUS



- ▲ Outstanding Confidence Plus son out of Erica of Ellston T220
- ▲ Outstanding combination of performance, maternal and carcass traits
- ▲ Highly sought after genetics with proven performance within his pedigree

PEDIGREE

Connealy Tobin
Connealy Confidence 0100
Becka Gala of Conanga 8281

Connealy Confidence Plus

Connealy Consensus
Elbanna of Conanga 1209
Elbasta of Conanga 9703

EF Commando 1366
Baldridge 38 Special
Baldridge Isabel Y69

Erica of Ellston T220

Bruns Top Cut 373
Erica of Ellston R96
Erica of Ellston M38



BULL INFORMATION

Registration #	USA19984739
Birthdate	01/05/2021
Genetic Testing	AMF-CAF-D2F-DDF-M1F-NHF-OHF-OSF-RDF

PRODUCTION									MATERNAL								
	CED	BW	WW	YW	RADG	DMI	YH	SC	HP	CEM	MILK	MW	MH	\$EN			
EPD	+10	+1.5	+98	+175	+32	+2.66	+6	+60	+15.0	+8	+41	+79	+3	-33			
Acc	.35	.51	.44	.39	.33	.33	.46	.43	.27	.32	.33	.38	.41				
Perc	20	60	1	1	10	95	45	70	20	55	1	35	60	90			
MANAGEMENT					CARCASS					\$VALUES							
	DOC	CLAW	ANGLE	PAP	HS	CW	MARB	REA	FAT	\$AxH	\$AxJ	\$M	\$W	\$F	\$G	\$B	\$C
EPD	+33	+46	+47	+3.42	+61	+89	+90	+1.18	+027	+210	+219	+95	+102	+120	+72	+192	+344
Acc	.38	.31	.31	.26	.33	.41	.38	.37	.34								
Perc	2	35	45	90	70	1	25	2	75	3	2	1	1	3	15	5	1

American Angus Association® August 7, 2023

Ayrvale **HERCULES** H9 PVPV Kingisle FarmsReg # H10H9
Birthdate 01/09/2012

- ▲ Proven performer with great transmitting ability
- ▲ Female sexed semen available

Te Mania Bartel B219

Ayrvale Bartel E7

Eaglehawk Jedda B32

Lawsons Invincible C402

Lawsons Invincible F338

Lawsons Total D1152

SELECTION INDEX	\$A	\$A-L
Index Value	\$254	\$397
Breed Average	\$197	\$340
Perc	5	13

	CED	CE Dtrs	GL	BW	200D	400D	600D	MCW	Milk	DTC	SS	CW	EMA	Rib	Rump	RBV %	IMF %	Doc	Claw	Foot Angle	Leg Angle
EBV	+4.8	+9.2	-8.4	+1.9	+47	+86	+114	+77	+26	-5.7	+0.9	+77	+12.2	+0.8	+0.6	+0.8	+3.4	+29	+1.06	+0.96	+1.02
Acc	95%	86%	99%	99%	98%	98%	98%	98%	98%	77%	98%	95%	95%	95%	95%	93%	94%	98%	98%	98%	97%
Perc	33	3	7	12	64	64	56	84	3	23	88	19	5	30	33	28	19	15	87	47	45

August 2023 TransTasman Angus Cattle Evaluation

Bellaspur **PLATINUM** P46 SVSV Bellaspur AngusReg # GSBP46
Birthdate 27/08/2018

- ▲ Impressive Get Cracking son, displays muscularity, big bodied, structural correctness in a moderate frame
- ▲ Dam Erica M032, stylish Westward daughter

Te Mania Berkley B1

Alloura Get Cracking G10

Alloura Jedda Z15

Werner Westward 357

Coolana Erica M032

Coolana Juana Erica F232

SELECTION INDEX	\$A	\$A-L
Index Value	\$238	\$396
Breed Average	\$197	\$340
Perc	13	14

	CED	CE Dtrs	GL	BW	200D	400D	600D	MCW	Milk	DTC	SS	CW	EMA	Rib	Rump	RBV %	IMF %	Doc	Claw	Foot Angle	Leg Angle
EBV	+3.8	+4.3	-2.4	+4.1	+47	+83	+106	+98	+12	-7.5	+1.6	+62	+10.2	+2.6	+2.1	+0.1	+3.9	+2	0.74	+0.90	+0.94
Acc	68%	56%	84%	86%	81%	82%	80%	77%	68%	49%	77%	72%	71%	72%	72%	67%	72%	56%	70%	70%	68%
Perc	42	36	84	51	62	70	73	54	87	3	68	64	12	7	13	71	12	99	27	32	20

August 2023 TransTasman Angus Cattle Evaluation

Poss **MARVEL** 011AN01339Reg # USA18962518
Birthdate 29/01/2017

- ▲ High performing and powerfully built with breed leading growth
- ▲ Breed leading growth and superior carcass merit

A A R Ten X 7008 S A

V A R Discovery 2240

Deer Valley Rita 0308

Poss Element 215

Poss Elmaretta 505

Poss Elmaretta 341

	CED	BW	WW	YW	RADG	DMI	YH	SC	HP	CEM	MILK	MW	MH	\$EN
EPD	+0	+2.9	+92	+166	+30	+2.29	+1.2	+1.13	+14.3	+6	+21	+141	+1.4	-53
Acc	.43	.68	.60	.52	.38	.38	.57	.53	.31	.36	.37	.43	.45	
Perc	90	85	2	1	15	95	3	30	25	75	80	1	1	

	DOC	CLAW	ANGLE	PAP	HS	CW	MARB	REA	FAT	\$AxH	\$AxJ	\$M	\$W	\$F	\$G	\$B	\$C
EPD	+33	+46	+47	+3.42	+61	+89	+90	+1.18	+0.27	+210	.219	+95	+102	+120	+72	+192	+344
Acc	.38	.31	.31	.26	.33	.41	.38	.37	.34								
Perc	4	80	45	95	90	15	10	80	70	80	65	80	30	25	15	15	25

American Angus Association® August 7, 2023

C-Bar WHISKEY RIVER 8105F 011AR03079

Reg # 4045146
Birthdate 11/01/2018



- ▲ High performance sire who is a phenotypic standout
- ▲ Featured & high selling bull at 2019 C-Bar Ranch
- ▲ High growth & muscle

BUF CRK The Right Kind U199

Pie One of a Kind 352

Pie Fayette 1160

C-Bar Contour 107X

Jeffries MS Joline Z243

Brown MS Big Sky U7877

INDEX				PERFORMANCE						MATERNAL					CARCASS				
	PRO\$	HB	GM	CE	BW	WW	YW	ADG	DMI	MM	ME	HPG	CEM	STAY	MARB	YG	CW	REA	BF
EPD	+36	-2	+38	+10	-.8	+77	+118	+.25	+1.93	+29	+14	+13	+7	+7	+.49	-.01	+29	+.36	+.01
Acc	-	-	-	47	50	49	49	49	18	28	15	32	31	38	43	35	43	42	38
Perc	95	98	46	79	66	11	19	37	83	21	92	38	53	98	35	19	32	17	31

August 1, 2023 Red Angus Association of America

Mushrush TOPPER 011AR03067

Reg # 3525067
Birthdate 22/03/2016



- ▲ Go-to bull for next program
- ▲ Proven maternal line producing global success
- ▲ Very correct phenotypically

Beckton Clifftop W692 E3

Beckton Clifftop Z500 E4

Beckton Tamara R291 EP

BUF CRK Lancer R017

Mushrush Lana 84S A033

Mushrush Lana IM W203



Scan to view
progeny at CIALE Alta

INDEX				PERFORMANCE						MATERNAL					CARCASS				
	PRO\$	HB	GM	CE	BW	WW	YW	ADG	DMI	MM	ME	HPG	CEM	STAY	MARB	YG	CW	REA	BF
EPD	+19	-1	+21	+16	-2.9	+77	+129	+.32	+1.84	+28	+12	+5	+9	+9	+.10	+.20	+.40	+.05	+.03
Acc	-	-	-	53	58	55	55	55	26	30	23	44	34	38	41	34	45	43	33
Perc	98	98	74	19	31	10	8	9	78	32	89	99	21	95	95	93	11	62	76

August 1, 2023 Red Angus Association of America

LSF SRR HEDGE FUND 7017E 011AR03074

Reg # 3723117
Birthdate 06/01/2017



- ▲ Exceptional calving ease, growth sire
- ▲ Ideal for cattlemen who appreciate performance
- ▲ Sires phenotypically correct progeny

LSF Takeover 9943W

H2R Profitbuilder B403

Brown Ms P707 Y6674

LSF Prospect 2035Z

LSF SRR Dina C5128

LSF SRR Dina Y1094 A3016

INDEX				PERFORMANCE						MATERNAL					CARCASS				
	PRO\$	HB	GM	CE	BW	WW	YW	ADG	DMI	MM	ME	HPG	CEM	STAY	MARB	YG	CW	REA	BF
EPD	+128	+58	+70	+15	-4.5	+77	+134	+.36	+1.84	+23	+7	+14	+11	+13	+.74	+.26	+35	+.10	+.07
Acc	-	-	-	56	63	56	56	56	31	27	17	27	35	40	42	38	48	47	39
Perc	11	42	9	23	12	11	6	3	78	72	69	19	6	76	8	98	19	52	99

August 1, 2023 Red Angus Association of America

JOKER

011SM02069

Hook's Joker 8J



BULL INFORMATION

Reg # 3866465
Birthdate 15/02/2021

- ▲ Homozygous polled & black
- ▲ Balanced trait sire across the board
- ▲ All production & maternal EPDs in top 25% or higher
- ▲ Big time carcass sire with top 1% MARB & top 10% REA

TJ Main Event 503B
CDI Mainline 265D
Hook's Beyonce 82B

Hook's Frontline 40F

Hooks Shear Force 38K
Hook's Carina 15C
Hook's Yearn 39Y

Hooks Shear Force 38K
Hook's Beacon 56B
Hooks Zafirah 41Z

Hook's Evita 18E

Hooks Titus 31T
Hook's Yuma 49Y
Hook's Universal 17U

	PERFORMANCE					MATERNAL					CARCASS						INDEX	
	CE	BW	WW	YW	ADG	MCE	MILK	MWW	STAY	DOC	CW	YG	MARB	BF	REA	SHR	API	TI
EPD	+15.3	-.8	+83.6	+128.7	+.28	+10.9	+34.9	+76.6	+20.6	+13.8	+39.2	-.40	+.79	-.063	+1.14	-.42	+189.2	+102.6
Acc	.47	.51	.52	.52	.52	.31	.25	.33	.37	.48	.47	.38	.44	.41	.45	.07		
Perc	10	15	35	30	30	1	2	5	10	25	20	60	1	85	10	10	1	2

July 25, 2023 American Simmental Association

BLAZE

011SM02036

SFJ Alta's Blaze 102Y



BULL INFORMATION

Reg # 2819676
Birthdate 10/02/2011

- ▲ Standout polled fullblood
- ▲ Bloodlines go back to the renowned Bar 5 genetics
- ▲ Exceptional depth of body & rib
- ▲ Utilized Australia wide

Takar
Sleepy Hollow Blaze
Anchor T Ingrid 9A

Bar 5 Blaze 802J

Bar 5 Prestige 681T
Bar 5 Precious 405Z
Bar 5S 407L Exclusive

DFM Marcus 14M
Saugeen Scorpion 31S
Hemr Martina 1M

Saugeen Miss Elmer 101U

SU Painter 59P
Saugeen Satin 95S
Bar 5 Satin Lady 402G

	PERFORMANCE					MATERNAL					CARCASS						INDEX	
	CE	BW	WW	YW	ADG	MCE	MILK	MWW	STAY	DOC	CW	YG	MARB	BF	REA	SHR	API	TI
EPD	+9.9	+2.4	+66.3	+86.1	+.12	+5.1	+38.8	+71.8	+11.2	+3.3	+12.4	-.58	-.21	-.125	+.87	-	+93.4	+62.6
Acc	.47	.56	.42	.41	.41	.22	.19	.28	.29	.31	.37	.29	.30	.27	.36	-		
Perc	15	10	70	85	99	20	30	55	95	99	85	50	95	85	50	-	70	65

July 25, 2023 American Simmental Association

LODESTAR

011SM02068

IR Lodestar H380



BULL INFORMATION

Registration # 3839823
Birthdate 09/10/2020

- ▲ SimAngus 1/2 SM x 1/2 AN
- ▲ Featured & high selling bull at Irvine Ranch
- ▲ Big time spread bull offering CE & exceptional performance
- ▲ Homozygous polled & black

GW Predestined 701T
GW Step Out 672X
GW Miss Lucky Charm 832P

Redhill 672X X004 231A

GW Premium Beef 021TS
GW Miss Prem Beef X004
GW Miss Quarter 538U

Hooks Shear Force 38K
Hook's Beacon 56B
Hooks Zafirah 41Z

IR Ms Lucy E711

G A R Prophet5
EXAR Lucy 5643
EXAR Lucy 0901

	PERFORMANCE					MATERNAL					CARCASS							INDEX	
	CE	BW	WW	YW	ADG	MCE	MILK	MWW	STAY	DOC	CW	YG	MRB	BF	REA	SHR	API	TI	
EPD	+17.1	-3.8	+86.6	+135.9	+31	+11.6	+20.9	+64.1	+17.9	+15.9	+41.4	-.26	+1.12	-.003	+1.22	-.35	+199.6	+110.2	
Acc	.50	.61	.59	.57	.57	.29	.21	.31	.34	.46	.45	.34	.41	.35	.40	.05			
Perc	10	5	20	20	25	2	75	40	25	15	25	45	1	95	1	50	1	1	

July 25, 2023 American Simmental Association

EXECUTIVE

011SM02046

EGL Executive Order E019



BULL INFORMATION

Reg # 3355483
Birthdate 20/02/2017

- ▲ Calving ease sire with exceptional phenotype
- ▲ Breed leading indexes
- ▲ Homozygous polled & black
- ▲ SimAngus (7/16 SM x 9/16 AN)

Nichols Legacy G151
Hooks Shear Force
C&D Tracy

Hook's Beacon 56B

GW Predestined 701T
Hooks Zafirah 41Z
Hook's Uno 54U

B/R New design 036
B/R Frontier 095
White Fence Pride H1

EGL Miss Frontier 4087

TC Stockman 365
EGL 0404
EGL 7329

	PERFORMANCE					MATERNAL					CARCASS							INDEX	
	CE	BW	WW	YW	ADG	MCE	MILK	MWW	STAY	DOC	CW	YG	MRB	BF	REA	SHR	API	TI	
EPD	+12.8	-.7	+73.2	+115.3	+26	+9.8	+26.9	+63.4	+22.9	+11.0	+34.5	-.06	+.93	+.014	+.63	-.36	+181.6	+92.7	
Acc	.56	.60	.59	.60	.60	.39	.34	.41	.39	.49	.55	.43	.51	.47	.52	.05			
Perc	45	35	65	60	55	10	20	40	1	70	45	95	2	99	60	45	2	10	

July 25, 2023 American Simmental Association

FINAL CUT

011BN01064

DMR Final Cut 795H9



BULL INFORMATION

Registration # R10478586

Birthdate 28/08/2020

	CED	BW	WW	YW	MILK	TM	CEM	SC	REA	IMF	FAT	HEIF PREG	STAY	COW WT	TERM INDEX	FERD INDEX
EPD	+9.1	-1.8	+26	+49	+4	+17	+3.09	+67	+38	+1	+0.09	+6.09	+1.53	+13.91	+2.59	+2.03
Acc	.37	.46	.42	.39	.30	-	.30	.45	.45	.52	.46	.24	.15	.25		
Perc	10	10	40	40	85	70	65	35	25	45	70	20	30	95	35	60

August 2023, International Brangus Breeders Association

- ▲ Calving ease specialist
- ▲ Use Final Cut to create fertile feminine females
- ▲ Attractive deep sided bull with extra muscle expression

MC New Direction 000 M24

MC Revelation 129T

MB MS Nimitz 129R

CB Final Cut 924X

MC Guns Donovan 124R

TBM MS Guns 924T3

RBM MS 52 Cool Hand 924R

CB Hombre 541T3

TJM Coronado 535X

MS Brinks Lambert 535T4

MS DMR Coronado 795C

CB Hombre 541T3

MS DMR Jethro 795Y2

MS Brinks UpperCut 795R9

FEARLESS

011LM01015

Cell Fearless



BULL INFORMATION

Registration # LFM2174270

Birthdate 09/01/2018

	GL	CED	BW	WW	YW	MILK	TM	CEM	SC	ST	DOC	YG	CW	REA	MARB	FAT	\$MTI
EPD	-4	+10	+2.2	+85	+138	+20	+62	+4	+1.50	+8	+11	+0.1	+51	+7.5	+2.6	+0.3	+65.17
Acc	.20	.43	.46	.46	.46	.24	-	.28	.22	.35	.42	.35	.43	.41	.43	.38	-
Perc	40	60	80	10	10	65	25	85	5	90	75	90	10	40	40	>95	30

NALF July 2023

- ▲ Homozygous polled & black Limflex
- ▲ High performance sire

R R Rito 707

Rito 707 of Ideal 340 707S

Ideal 3407 of 1418 076

S A V Resource 1441

S AV 8180 Traveler 004

S A V Blackcap May 4136

S AV May 2397

JCL Lodestar 27L

LH Rodemaster 338R

Vermilion E Blackbird 9546

Mags UR Salina

BR Midland

Mags Salina

Mags Lady Ace

Tarcombe **NOCKOUT** R064 TARCOMBE HEREFORDS

Reg # THSR064

Birthdate 05/04/2020

Genetic Test IEF DLF HYF MSUDF BVDVNeg



- ▲ Calving ease sire
- ▲ Add growth & carcass quality to any program
- ▲ Homozygous polled

Wirruna Kalimna K326

Banemore Elite M102 AI

Yavenvale Nockout N312

Banemore Last Day P084

Yavenvale Corisande L385

Banemore Lastdayl 14 AI

SELECTION INDEX	Southern Self-Replacing Index (\$)	Northern Self-Replacing Index (\$)	Southern Baldy Maternal Index (\$)	Northern Baldy Maternal Index (\$)
Index Value	+\$229	\$214	\$228	\$160
Breed Average	+\$137	\$124	\$140	\$103

	CED %	CEDtrs %	GI days	BW kg	200 days	400 days	600 days	MCW kg	Milk kg	SS cm	DTC days	CWT kg	EMA sq.cm	RIB F mm	RUMPF mm	RBV %	IMF %	D
EBV	+5.3	+4.0	-2.1	+3.6	+44	+79	+108	+74	+21	+4.4	-5.6	+77	+4.7	+2.0	+2.9	+3	+2.1	-
Acc	57%	41%	66%	85%	75%	73%	75%	66%	56%	77%	37%	60%	51%	55%	59%	52%	57%	-

July 2023 Hereford BREEDPLAN

R **NEW YORK** 5083 011HP01039

Reg # 43399385

Birthdate 01/04/2013



- ▲ Proven calving ease sire
- ▲ Trait leader for 12 of the 20 EPDs & Indexes in breed
- ▲ Heterozygous polled
- ▲ Impressive Australian progeny

MSU MF Hudson 19H

SHF York 19H Y02

Loewen Miss P20 10W

R Puckster 2586

R Miss Puckster 971

R Miss Revolution 159

	PERFORMANCE						MATERNAL							CARCASS				\$VALUES		
	CED	BW	WW	YW	DMI	SC	SCF	MILK	M&G	CEM	MCW	UDDER	TEAT	CW	FAT	REA	MARB	\$BMI	\$BII	\$CHB
EPD	+3.5	+6	+74	+107	+1	+1.5	+25.1	+22	+59	-.6	+79	+1.50	+1.50	+90	+0.040	+57	+12	\$507	\$604	\$145
Acc	.60	.84	.77	.76	.15	.62	.45	.52	-	.50	.42	.69	.69	.33	.39	.33	.35	-	-	-

August 2023, American Hereford Association

TH 745A 358C **PIONEER** 297F 011HP01040

Reg # OSA43920548AHR

Birthdate 17/03/2018

Genetic Test IEF DLF HYF MSUDF



- ▲ Complete package of CE, growth & carcass
- ▲ Well balanced, heavy muscled with sound structure
- ▲ Outcross pedigree

TH 89T 755T Stockman 475Z

Boyd Worldwide 9050 ET

TH 403A 475Z Pioneer 358C

Rangeline 11Y Miss World 745A

TH 71U 17Y Rita 403A

Rangeline 60S Tear Drop 11Y

SELECTION INDEX	Southern Self-Replacing Index (\$)	Northern Self-Replacing Index (\$)	Southern Baldy Maternal Index (\$)	Northern Baldy Maternal Index (\$)
Index Value	+\$150	\$144	\$159	\$115
Breed Average	+\$137	\$124	\$140	\$103

	CED %	CEDtrs %	GI days	BW kg	200 days	400 days	600 days	MCW kg	Milk kg	SS cm	DTC days	CWT kg	EMA sq.cm	RIB F mm	RUMPF mm	RBV %	IMF %	D
EBV	+5.9	-	-2.6	+1.9	+38	+59	+74	+50	+18	+2.3	-3.2	+50	+5.1	+2.2	+2.0	+6	+2	-
Acc	26%	-%	58%	79%	81%	80%	77%	73%	75%	75%	31%	69%	58%	67%	60%	47%	63%	-%

July 2023 Hereford BREEDPLAN

LT VENTURE 3198 011CH01028

Reg # 0AUJ5612E
Birthdate 11/03/2013



- ▲ Strong maternal line out of a proven dam
- ▲ Use Venture for feet improvement, excellent temperament & body type

LT Western Edge 4057 Pld
LT Stagecoach 8068 Pld
LT Lady Macbeth 2131 Pl

LT Easy Pro 1158 Pld
LT Ballet 9219 Polled
LT Ballet 6233

SELECTION INDEX	Domestic Terminal Index (\$)	Northern Maternal Index (\$)
Index Value	\$41	\$102
Breed Average	\$25	\$39

	CED	CE Dtrs	GL	BW	200D	400D	600D	MCW	Milk	SS	CW	EMA	Rib	Rump	RBY %	IMF %
EBV	+7.5	-.3	-3.4	-3.7	+17	+43	+52	+30	+24	+3.3	+39	+1.1	+3.6	+4.4	-2.8	+5
Acc	90%	81%	97%	97%	95%	95%	95%	91%	92%	94%	87%	78%	87%	86%	81%	78%

June 2023 Australasian Charolais BREEDPLAN Analysis

Cedarlea LOW RIDER 105F 011CH01027

Reg # PMC744233
Birthdate 06/02/2018



- ▲ Calving ease sire with strong maternal traits
- ▲ Moderate framed individual with muscle & mass
- ▲ Polled purebred

LT Ledger 0332P

Circle Cee Legend 307A

Circle Cee Stunning 125Y

CSS Sir Gridmaker 2W

Cedarlea Yoshi 71Y

Cedarlea Ubee A Roper 66U

	CED	BW	WW	YW	MILK	MCE	MTL	SC	UDDR	TEAT	CW	REA	FAT	MARB	TSI
EPD	+9.4	-4.2	+38	+72	+27	+5.4	+46	+7	+1.21	+1.18	+9	+81	+0.41	+0.04	+220.52
Acc	.46	.67	.47	.42	.24	.27	.32	.18	.08	.08	.16	.15	.12	.11	
Perc	60	9	100	100	35	85	85	75	20	20	80	20	100	70	95

AICA August 2023

Mead BOOTLEGGER T748 011CH01046

Reg # M938055
Birthdate 02/03/2019



- ▲ Calving ease sire
- ▲ Will increase marbling
- ▲ Use Bootlegger to improve udder quality & functionality

LT Long Distance 9001

WC Bootlegger 4017

WC Rita 1534

LT Ledger 0332

Mead Lady P280

Mead Lady I084

	CED	BW	WW	YW	MILK	MCE	MTL	SC	UDDR	TEAT	CW	REA	FAT	MARB	TSI
EPD	+17.8	-5.1	+51	+92	+32	+7.0	+57	+1.2	+1.22	+1.22	+6	+42	+0.51	+24	+240.85
Acc	.28	.41	.25	.23	.21	.20	.22	.20	.15	.15	.16	.16	.15	.14	
Perc	5	5	85	80	15	70	40	30	15	15	85	80	100	15	75

AICA August 2023

Blue Spark **RAPTOR** BLUE SPARK SPECKLE PARK

Reg # BSP R01
Birthdate 15/02/2020
Genetic Test RGF NT821F LeptinT/T



- ▲ Excellent structure & docility
- ▲ Great calving ease, short gestation, curve bending growth
- ▲ High demand sire

Semex Alliance Yogi Goes Redneck

Johner Stock Farm Trade Secret
Monnery River 7W

Codiak Eagle GNK 46Y
Blue Spark H9 Exquisite P03
Botta of Conanga 0583

	GL	BW	200D	400D	600D	MCW	Milk	SS	CW	EMA	Rib	Rump	RBY %	IMF %
EBV	-3.4	+6	+22	+40	+43	+40	+1	+1.3	+30	+6	+3	+3	-1	+1
Acc	60%	71%	68%	66%	64%	54%	53%	67%	55%	45%	55%	54%	50%	49%

July 2023 Speckle Park BREEDPLAN

Wattle Grove **PLAYER** P201 WATTLE GROVE SPECKLE PARK

Reg # WGS P201
Birthdate 21/05/2018
Genetic Test RGF NT821F



- ▲ Moderate birth weight with a big time growth spread
- ▲ Clean fronted bull with plenty of depth and style
- ▲ Pedigree stacked with performance

Zoro Matters 1Z

Avery Creek Banjo 01B
Tumbleweed Acres Lulu 18Y

Wattle Grove Almighty E41
Wattle Grove E41 Stardust J33
Wattle Grove Star Dust E2

NEW

	GL	BW	200D	400D	600D	MCW	Milk	SS	CW	EMA	Rib	Rump	RBY %	IMF %
EBV	-.1	+2.9	+26	+35	+44	+41	+6	+1	+26	+2	-.2	-.5	-.1	+3
Acc	55%	84%	77%	77%	73%	58%	49%	60%	63%	47%	61%	60%	56%	54%

July 2023 Speckle Park BREEDPLAN

Marblen **JESSE** 10J 011SK00001

Reg # MBN 10J
Birthdate 15/03/2021
Genetic Test RGF NT821F



- ▲ Short gestation with moderate birthweight
- ▲ Clean fronted bull with extra definition right throughout

Caja Zeppelin 1B

INC Six Gun 428F
Upto Specs Willa 17W

Codiak Oh My Gosh GNK 60A
River Hill 60A Fancy Lady 96F
River Hill 54Z Fancy Free 93B

	GL	BW	200D	400D	600D	MCW	Milk	SS	CW	EMA	Rib	Rump	RBY %	IMF %
EBV	-1.1	+1.8	+17	+20	+31	+43	+4	-.4	+17	+2	+2	+1	-.1	+0
Acc	41%	58%	55%	52%	52%	41%	38%	47%	41%	33%	43%	42%	38%	38%

July 2023 Speckle Park BREEDPLAN

What is Akaushi?



Akaushi is known as the “Emperor’s Breed.” All Akaushi are Wagyu, but not all Wagyu are Akaushi. The Akaushi breed did not exist outside of Japan until the 1990s. Akaushi cattle are known worldwide for their distinct marbling that gives Akaushi beef a melt-in-your-mouth texture and rich, buttery flavor.

How did this premium Japanese beef breed come to Aust and the US? Akaushi cattle are almost entirely derived from the original fullblood Akaushi herd imported to the U.S. in 1994.

Since then, Akaushi genetics have increased carcass performance and premium grade opportunities for cattle producers throughout the country.

While Akaushi beef is prized for its marbling and intense flavour, Akaushi cattle boast extremely efficient, consistent production. They excel at important traits, like growth, fertility, vigor and longevity. The Akaushi breed offers one-of-a-kind opportunities to improve consistency, maintain uniformity and help maximize the gap between profit and loss in your herd.

BREED BENEFITS

Looking for a new alternative in your breeding. Want higher cattle prices?

Next breeding season consider Akaushi genetics for your herd. This breed consistently produces high quality carcasses for increased profitability. Recent carcass data shows Akaushi cattle grade an average of 51.4% Prime and 47.4% Choice, in US feed systems which is key to driving Akaushi beef demand with consumers.

Beef producers prize these traits in their Akaushi herds:

BULL LONGEVITY

Akaushi bulls typically last 10+ years and often double the quality grade and minimize yield grade 4s and 5s

COW LONGEVITY

Akaushi average 8 years of calving and are known for their high fertility, calving ease and quality udders, feet and legs

CALVING EASE

More live calves on the ground, less calf mortality

ENVIRONMENTAL ADAPTABILITY

The Akaushi breed is successful across all climates, including cold, heat, high altitude, etc.

HEALTH AND TASTE

The high-fat content in Akaushi cattle leaves less room for muscle fiber and collagen, making the beef notably more tender than other breeds. It also contains a higher concentration of monounsaturated fat relative to saturated fat, which the American Heart Association notes can lead to lower cholesterol, the prevention of coronary heart disease and weight loss.

In addition, the high amount of oleic acid found in Akaushi beef gives it a deep, buttery taste, unlike any other beef on the American market. It provides a truly unique eating experience with a melt-in-your-mouth texture.



Sourced from: <https://www.akaushi.com/breed-overview>

MASTERCHEF

DELTA WAGYU

The Wright Wagyu Master Chef E146



BULL INFORMATION

Registration #	ACCFE0146
Birthdate	23/09/2009
Genetic Testing	B3-F, CHS-F, CL16-F, F11-C, F13-F

	GL	BW	200D	400D	600D	Mat Cow Weight	Milk	SS	CW	EMA	Rump	RBV %	Marble Score	Marble Fineness
EBV	+1.4	+5.0	+30	+49	+74	+91	+7	+2.9	+57	-3.5	+2.9	-8	-2	+0.5
Acc	75%	90%	87%	87%	86%	78%	80%	65%	76%	60%	64%	62%	56%	47%

July 2023 Wagyu BREEDPLAN

- ▲ Ultimate growth bull
- ▲ Ideally suit breeders looking to increase their carcass yield and turn calves off early
- ▲ Produces superior growth, large carcass yields

Dai 10 Mitsumau 76
Hikari J251830R
Kazutomo 92958

TWA Kajikari

Haruhime 221
UME MTA 251352
Noriko 2920

Dai 2 Shigenami 27
Shigemaru
Dai 4 Akibare 3357

Kalanga Shigehomare B234

Hikari J251830R
Kalanga Hikahomare VW36
RWA Homare Blue 2

SELECTION INDEX	Wagyu Breeder	Self Replacing	Fullblood Terminal	F1 Terminal
Index Value	\$169	\$116	\$100	\$56
Breed Average	\$159	\$158	\$134	\$122

RECITAL

NEW

DELTA WAGYU

Academy Red Wagyu Recital J34



BULL INFORMATION

Registration #	ARWFI0034
Birthdate	18/09/2013
Genetic Testing	F11-Free, IARS-Free

	GL	BW	200D	400D	600D	Mat Cow Weight	Milk	SS	CW	EMA	Rump	RBV %	Marble Score	Marble Fineness
EBV	+.4	+4.2	+27	+36	+57	+48	+11	+4.1	+44	-2.5	+6.5	-1.7	+.4	+.17
Acc	55%	88%	81%	80%	79%	70%	65%	58%	69%	53%	55%	53%	48%	41%

August (run 1) 2023 Wagyu BREEDPLAN

- ▲ Recital is beautifully bred.
- ▲ He dam and grand dam have both been exceptional breeders and his sire,
- ▲ A powerful, very quiet bull who weighed over 1000 kgs at 4 years

Dai 10 Mitsumau 76
HB Big AI Q502
MTA Akiko

Sumo Cattle CO Big AI E211

HB Big AI Q502
TWA Musume
Dai 8 Marunami

HB Big AI Q502
Heart Brand Red Emperor
Dai 8 Marunami

Academy Red Wagyu Reiko F10

Shigemaru
Kalanga Shigehomare B234
Kalanga Hikahomare VW36

SELECTION INDEX	Wagyu Breeder	Self Replacing	Fullblood Terminal	F1 Terminal
Index Value	\$125	\$85	\$119	\$88
Breed Average	\$159	\$159	\$135	\$122

EVIDENCE

DELTA WAGYU Peppermill Grove L0013 Evidence



BULL INFORMATION

Registration #	PMGFL00013
Birthdate	05/04/2015
Genetic Testing	B3F, CHSC, CL16F, F11C, F13F

	GL	BW	200D	400D	600D	Mat Cow Weight	Milk	SS	CW	EMA	Rump	RBV %	Marble Score	Marble Fineness
EBV	-0.8	-0.8	+0	+1	-5	-9	-7	-5	+0	+8.8	+2.4	+3	+1.9	+4.2
Acc	83%	89%	87%	86%	85%	79%	80%	75%	79%	72%	73%	64%	72%	66%

July 2023 Wagyu BREEDPLAN

- ▲ Calves will be born earlier, have a higher growth rate & display better marbling characteristics
- ▲ Top 5% Marble Fineness
- ▲ Top 5% Rump Fat, Marble Score

Shigeshigen Ami J10632
Itoshigen Ami
Fukuyuki

Mayura Itoshigen Ami JNR

World K's Sanjiro
Mayura Dai Ni Kintou 1
Mayura Dai 2 kintou 7/2

Monjiro J11550
World K's Michifuku
Michiko J655635

Peppermill Grove G037

TWA Shikikan
Peppermill Grove E023
Peppermill Grove B017

SELECTION INDEX	Wagyu Breeder	Self Replacing	Fullblood Terminal	F1 Terminal
Index Value	\$189	\$226	\$200	\$206
Breed Average	\$159	\$158	\$134	\$122

SHIKIKAN

DELTA WAGYU Sumo Cattle Co Shikikan N211



BULL INFORMATION

Registration #	SM0FN0211
Birthdate	01/11/2017
Genetic Testing	B3F, CHSF, F11F, IARF

	GL	BW	200D	400D	600D	Mat Cow Weight	Milk	SS	CW	EMA	Rump	RBV %	Marble Score	Marble Fineness
EBV	-1.1	+2.5	+21	+36	+48	+71	+2	+2	+49	+3.7	-2.5	+8	+2.0	+3.9
Acc	78%	82%	86%	82%	81%	70%	62%	66%	74%	68%	69%	58%	68%	60%

July 2023 Wagyu BREEDPLAN

- ▲ Rare & highly sought after genetics
- ▲ Outperforms on all growth characteristics & carcass weight without losing the outstanding marbling the Shikikan line is known for

World K's Takazakura
TWA Shikikan
World K's Suzutani

Sumo Cattle Co Shikikan D233

Itoshigenami
Sumo Nami W0079
Sumo F U2209

Itoshigenami
Sumo Cattle Co Itoshigenami C0158
Sumo Michifuku U2208

Sumo Cattle Co Nami G195

TF Terutani 40/1
Sumo Cattle Co Tani C099
TF Hikohimi 34/3

SELECTION INDEX	Wagyu Breeder	Self Replacing	Fullblood Terminal	F1 Terminal
Index Value	\$297	\$284	\$233	\$205
Breed Average	\$159	\$158	\$134	\$122

SPRING 2023 PRICE LIST

ANGUS	Price	\$ > 50 Units	Sexed
44 Double Play	\$35		
Ascot Evident H146	\$35		
Ascot Hallmark H147	\$50		
Ayrvale Hercules H9	\$35		\$85
BA7 Oaks Bold Ruler	\$45		
Baldrige 38 Special	\$45		
Baldrige Badger	\$40		
Baldrige Forecaster	\$45		
Bellapur Platinum P46	\$40		
Byergo Winston 8460	\$40		
Clunie Range Kaluha K330	\$40		
Connealy Reformer	\$35		
Connealy Big Valley	\$50		
DL Zoom	\$30		
Ellingson Deep River	\$50	\$40	
Ellingson Three Rivers	\$60	\$45	
Jindra Megahit	\$50		
HF Tribunal	\$40		
KCF Bennett Culmination	\$40		
KR Pacesetter	\$35		
Might and Power	\$55		
Poss Marvel	male & female sexed		\$45
Poss Sergeant	\$35		
Poss Wrangler	\$35		
Roseda Powerplant	\$50		
SAV Pursuit	\$50		
SAV Ten Percent 3085			male \$60
Stellar Quicksilver Q7	\$50	\$40	
Sterling Precise	\$35		
Woodhill Patent	\$40		

RED ANGUS		
C-Bar Whiskey River 8105F	\$50	
Hedge Fund	\$40	
McPhee Trophy	\$50	\$35
Mushrush Topper	\$40	
Red Dwajo Sundance 114A	\$50	

BRANGUS	
Final Cut	\$30

BLONDE D'AQUITAINE	
Arsha's Polled Umpire	\$25

CHAROLAIS	Price
Cedarlea Low Rider	\$30
LT Venture PP	\$50
Mead Bootlegger	\$30

POLLED HEREFORD	
400z Empire	\$25
Remitall Sleep Easy 68U	\$25
R New York	\$40
Tarcombe Nockout R064	\$40
TH 745A 358C Pioneer 297F	\$40

SENEPOL	
Coliseum	\$30

POLLED SHORTHORN	
Moombi Ooktali G34	\$40 \$20 comm

SIMMENTAL	
EGL Executive (SimAngus)	\$25
Grinalta's HP Ruben	\$40
Hook's Joker 8J	\$35
IR Lodestar (SimAngus)	\$35
IPU Liner	\$35
SFJ Altas Blaze 102Y	\$45

SPECKLE PARK	
Blue Spark Raptor	\$35
Marblen Jesse 10J	\$25
Petemar Special Edition 2D	\$50
Wattle Grove Player P201	\$30

LIMOUSIN	
Birchwood Rusty Zane PP	\$30
Cell Fearless PP (Lim-Flex)	\$25
Sauvignon	\$50

WAGYU / AKAUSHI**	
Arnie	\$50
Bar R-AB 4504	\$75
Big Al	\$50
Evidence	\$50
Masterchef	\$250
Recital	\$75
Shikikan	\$50

All bulls with traits highlighted in their proof are in the TOP 20% or higher for that trait!

** volume discount available

Australian Progeny



Baldrige 38 Special at Glatz Black Angus



Woodhill Patent at DSK Angus



Ellingson Three Rivers at Granite Ridge Angus



Baldrige 38 Special at Alamy Angus



Woodhill Patent at Araluen Angus



Ellingson Three Rivers at Merridale Angus

Alta Genetics Australia

Melbourne Head Office (03) 8336 1458
info.au@altagenetics.com | australia.altagenetics.com/beef

TONY SIMPSON

Beef Programs Manager | 0427 341 458 | tony.simpson@altagenetics.com

KIRRILY LUMSDEN

Beef Sales and Support | 0428 529 275 | kirrily.lumsden@altagenetics.com

ANDREW MEDHURST

Regional Sales | 0459 957 169 | andrew.medhurst@altagenetics.com

GARY JONES

Regional Sales | 0438 830 865 | gary.jones@altagenetics.com

RUBY CANNING

Marketing | 0448 304 465 | ruby.canning@altagenetics.com