

Spring 2022

ALTA GENETICS BEEF



Stellar Quicksilver Q7

Understanding Angus Selection Indexes

Selection indexes are utilised by livestock breeders of many species around the world and are considered an essential part of any modern livestock breeding program. Selection indexes aid in the selection of animals for use within a breeding program where there are several traits of economic or functional importance by providing an overall "score" of an animal's genetic value. Selection indexes are calculated for a specific breeding purpose and are calculated based on weightings placed on individual traits that are deemed to be important for that purpose.

Selection indexes assist beef producers in making "balanced" selection decisions, taking into account the relevant growth, carcass & fertility attributes of each animal to identify animals that are most suitable for use within their particular commercial enterprise. Selection indexes reflect both the short term profit generated by an animal through the sale of their progeny, and the longer term profit generated by their daughters in a self-replacing cow herd.

Angus Breeding Indexes

The Angus Breeding Index (\$A) and Angus Breeding Low Feed Cost Index (\$A-L) estimate the genetic differences between animals in net profitability per cow joined in a typical commercial self-replacing herd using Angus bulls. These selection indexes are not specific to a particular market end-point, but identify animals that will improve overall net profitability in the majority of commercial, self-replacing, grass and grain finishing beef production systems. Daughters are retained for breeding and therefore female traits are of importance.

The \$A & \$A-L indexes are similar, with the difference being the production system on which they are modelled. The \$A index caters for production systems where pasture is fully utilised for the majority of the year, while the \$A-L index caters for systems where feed is surplus to requirements for the majority of the year, or the cost of supplying additional feed when animal feed requirements increase, via increased pasture production and/or supplementary feeding, is low. The \$A index aims to maintain mature cow weight while the \$A-L Index does not aim to limit an increase in mature cow weight.

Figure 1: Trait Contribution to the Angus Breeding and Angus Breeding Low Feed Cost Indexes

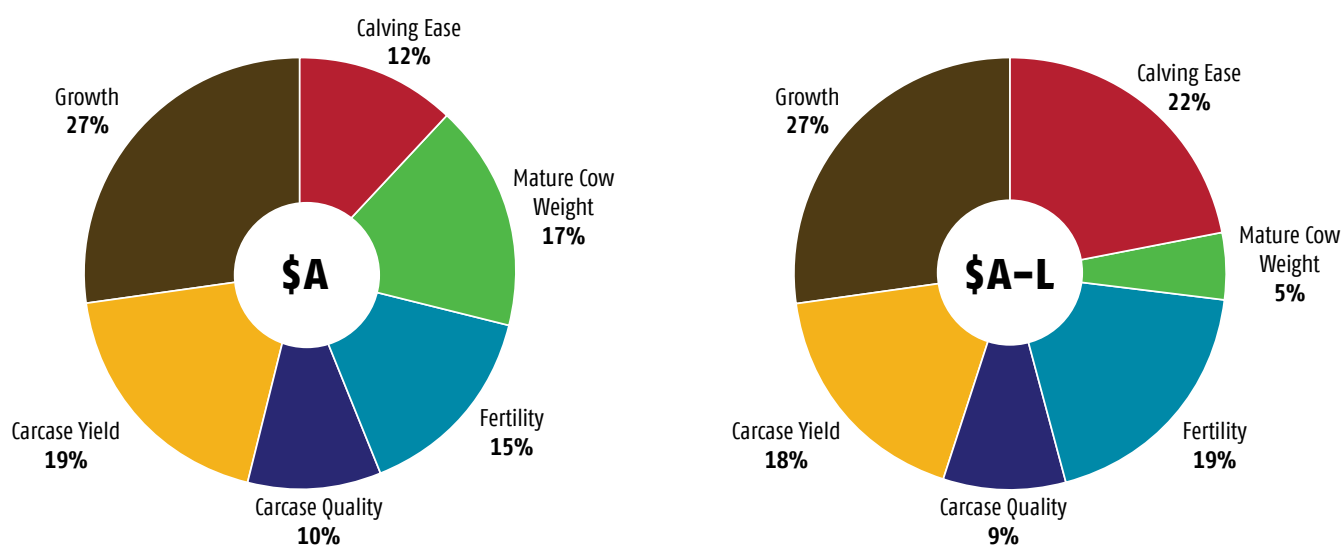


Figure 1 shows the traits that are considered in the \$A & \$A-L indexes, and how much they contribute to the overall balance of each selection index. The larger the segment, the greater the impact on the selection index.

In both the \$A & \$A-L indexes, there is a focus on improving growth, carcass, calving ease and fertility traits. The main difference is the increased emphasis on mature cow weight in the \$A index, whereas this emphasis is given to calving ease and fertility in the \$A-L index.

Selection advantage is calculated by ranking well used sires within the Angus breed on each respective selection index, and comparing the average EBVs of the sires in the highest 10% with the average EBVs of all sires from which they were selected. The selection advantage is indicative of the long term direction and relativity of response that will occur in individual traits if selection is based on each respective selection index. The actual response that is observed will vary depending on the features of the individual breeding program. More information can be found on the Angus Australia website.



CULMINATION

011AN02260

K C F Bennett Culmination



- ▲ This bull adds it all up in one package
- ▲ Exceptional calving ease, breed leading performance and carcass merit
- ▲ Female sexed semen available late spring
- ▲ Top 1% growth EBVs, Milk, CWT + Indexes

PEDIGREE

Connealy Consensus
 K C F Bennett Consent Y75
 K C F Miss Protege W148

K C F Bennett Summation
 S S Objective T510 OT26
 Thomas Patricia 9705
 Thomas Patricia 71138

K C F Bennett Energizer
 K C F Bennett Homestead
 K C F Miss Quality P164

K C F Miss Homestead C452
 Connealy Contrast
 K C F Miss Contrast Z607
 Thomas Patricia 9705

BULL INFORMATION

Registration #	USA19749024
Birthdate	30/10/2019
Genetic Testing	AMF,CAF,DDF,NHF,DWF,MAF,MHF,OHF,OSF,RGF

SELECTION INDEX

	\$A	\$A-L
Index Value	+\$296	\$488
Breed Average	+\$193	\$334
Perc	1	1

	CED	CE Dtrs	GL	BW	200D	400D	600D	MCW	Milk	DTC	SS	CW	EMA	Rib	Rump	RBV %	IMF %	Doc	Angle	Claw
EBV	+6.4	+2.8	-0.3	+1.7	+71	+128	+161	+126	+29	-3.4	+1.3	+104	+12.3	+1.4	0.0	+0.5	+2.3	-	+1.14	+0.92
Acc	45%	42%	63%	77%	76%	76%	75%	73%	73%	34%	70%	73%	70%	72%	64%	68%	68%		70%	70%
Perc	20	52	97	8	1	1	1	13	1	71	78	1	2	15	39	49	39	-	83	65

August 2022 TransTasman Angus Cattle Evaluation

POWERPLANT

011AN02355

ROSEDA POWERPLANT ^{PVPV}



- ▲ Uniquely combines calving ease, high growth & marbling in an attractive package
- ▲ Combines the outstanding carcass genetics of Powerball x Prime Divine x Prophet
- ▲ Top 1% growth EBVs, CWT, all breed indexes
- ▲ Outcross marbling genetics – Top 3% IMF

PEDIGREE

Quaker Hill Manning 4EX9
 E W A Peyton 642
 E W A 444 of 968 Progress

Roseda Powerball23 F091
 V A R Discovery 2240
 Roseda Blackcap B103 D118
 Roseda Blackcap 0134 B103

Rito 9Q20 of Rita 5F56 GHM
 Welytok Prime Divine 6D91
 Welytok Total 10 Erianna 3B2

Roseda Ms Flora Divine F113
 G A R Prophet
 Roseda Ms Flora Prophet B126
 Roseda Ms Flora Rito S033

BULL INFORMATION

Registration #	USA19881320
Birthdate	13/10/2020
Genetic Testing	AMF,CAF,DDF,NHF,DWF,MAF,MHF,OHF,OSF,RGF

SELECTION INDEX

	\$A	\$A-L
Index Value	+\$311	\$519
Breed Average	+\$193	\$334
Perc	1	1

	CED	CE Dtrs	GL	BW	200D	400D	600D	MCW	Milk	DTC	SS	CW	EMA	Rib	Rump	RBV %	IMF %	Doc	Angle	Claw
EBV	+3.2	+1.5	-0.5	+4.2	+79	+141	+177	+142	+21	-3.9	+1.3	+98	+6.6	+1.8	+0.4	-1.2	+4.1	-	+0.80	+1.02
Acc	48%	44%	65%	77%	76%	76%	75%	74%	72%	36%	69%	74%	70%	73%	65%	69%	68%		68%	68%
Perc	46	64	96	52	1	1	1	4	20	63	78	1	40	10	29	95	3	-	13	81



Quicksilver

- ▲ Superior carcass & marbling – Top 1% EMA + IMF
- ▲ Attractive sire with shape & muscling
- ▲ Pedigree stacked with excellent structural EBVs
- ▲ First calf out of an up-and-coming young donor – combines femininity, structure & elite EBVs in a moderate frame
- ▲ Breed leading docility

PEDIGREE

G A R Progress
 G A R Momentum
 G A R Big Eye 1770
Lawsons Momentous M518
 T E Mania Africa A217
 Lawsons Africa H229
 Lawsons Rocknd Ambush E1103
 C R A Bextor 872 5205 608
 G A R Prophet
 G A R Objective 1885
Stellar Vicky Prophet N9
 Sitz Upward 307R
 Aberdeen Estate Vicky G93
 KO Vicky C44

BULL INFORMATION

Registration #	JCAQ7
Birthdate	30/07/2019
Genetic Testing	AMF,CAF,DDF,NHF,DWF,MAF,MHF,OHF,OSF,RGF

SELECTION INDEX

	\$A	\$A-L
Index Value	+\$274	\$413
Breed Average	+\$193	\$334
Perc	2	7

	CED	CE Dtrs	GL	BW	200D	400D	600D	MCW	Milk	DTC	SS	CW	EMA	Rib	Rump	RBV %	IMF %	Doc	Angle	Claw
EBV	-4.1	-3.5	-8.5	+4.4	+65	+115	+138	+102	+25	-3.2	+0.9	+85	+12.8	-0.5	-1.9	+0.3	+4.7	+27	+0.76	+0.80
Acc	66%	58%	82%	79%	78%	78%	77%	75%	69%	47%	73%	73%	67%	72%	68%	68%	67%	68%	77%	76%
Perc	89	93	6	57	3	3	11	46	5	74	89	5	1	64	84	57	1	5	8	39

August 2022 TransTasman Angus Cattle Evaluation

PATENT

011AN01498

Woodhill Patent ^{PVPV}



- ▲ Premier calving ease sire – ideal for next heifer program
- ▲ Top 1% CE Dtrs, 400D + 600D EBV, all breed indexes
- ▲ Tremendous amount of body and mass with exceptional growth
- ▲ Descendant of Miss Traveler 58, the foundation of the Woodhill Evergreen family

PEDIGREE

Hoover Dam
 Baldrige Xpand x743
 Baldrige Queen S87

Baldrige Colonel C251
 Styles Upgrade J59
 Baldrige Isabel Y69
 Baldrige Isabel T935

Basin Franchise P142
 EF Complement 8088
 EF Everelda Entense 6117

Woodhill Evergreen Y10-C62
 S A V Final Answer 0035
 Woodhill Evergreen W269-Y10
 Woodhill Evergreen 22P-W269

BULL INFORMATION

Registration #	USA19199070
Birthdate	02/02/2018
Genetic Testing	AMF,CAF,DDF,NHF,DWF,MAF,MHF,OHF,OSF,RGF

SELECTION INDEX

	\$A	\$A-L
Index Value	\$286	\$491
Breed Average	+\$193	\$334
Perc	1	1

	CED	CE Dtrs	GL	BW	200D	400D	600D	MCW	Milk	DTC	SS	CW	EMA	Rib	Rump	RBV %	IMF %	Doc	Angle	Claw
EBV	+10.1	+11.7	-6.8	+1.8	+68	+126	+161	+126	+18	-4.2	+2.6	+88	+5.6	-0.9	-1.3	+0.8	+2.0	+6	+1.08	+0.72
Acc	62%	49%	80%	90%	80%	79%	77%	77%	74%	38%	72%	76%	71%	74%	66%	70%	70%	45%	77%	77%
Perc	3	1	19	9	2	1	1	13	43	57	26	3	57	74	72	36	50	56	73	23

August 2022 TransTasman Angus Cattle Evaluation

38 SPECIAL

011AN01256

Baldrige 38 Special ^{PV}



- ▲ One of the high demand sires of the breed
- ▲ Reliable proven calving ease/performance sire
- ▲ Balanced and attractive EBVs
- ▲ Australian progeny have excelled – high breeder satisfaction

PEDIGREE

Basin Franchise P142
 EF Complement 8088
 EF Everelda Entense 6117

EF Commando 1366
 B/R Ambush 28
 Riverbend Young Lucy W1470
 Riverbend Young Lucy T1080

Sitz Upward 307R
 Styles Upgrade J59
 Plainview Lassie 71B

Baldrige Isabel Y69
 Baldrige Kaboom K243 KCF
 Baldrige Isabel T935
 Baldrige Isabel P4527



Murdeduke 38 Special R177



Glatz's 38 Special R32

BULL INFORMATION	
Registration #	USA18229487
Birthdate	2015-01-13
Genetic Testing	AMF,CAF,DDF,NHF,MAF,OSF,RGF

SELECTION INDEX	\$A	\$A-L
Index Value	\$269	\$447
Breed Average	+\$193	\$334
Perc	3	2

	CED	CE Dtrs	GL	BW	200D	400D	600D	MCW	Milk	DTC	SS	CW	EMA	Rib	Rump	RYB %	IMF %	Doc	Angle	Claw
EBV	+8.1	+6.8	-5.4	+2.8	+66	+116	+148	+110	+21	-3.3	+2.6	+78	+7.6	+0.6	-0.8	-0.1	+2.4	+6	+0.82	+0.62
Acc	82%	64%	99%	98%	97%	97%	97%	87%	83%	53%	96%	85%	88%	87%	84%	82%	85%	96%	99%	99%
Perc	9	13	37	21	3	3	5	33	18	72	26	15	26	31	60	73	35	55	15	10

August 2022 TransTasman Angus Cattle Evaluation

Ellingson Three Rivers Calves

at Little Meadow Angus, WA

10 weeks



T56 Heifer calf

12 weeks



T101 Bull calf

8 weeks



T105 Bull calf

“It has been many years since we have been so excited about an AI sire's calves. Ellingson Three Rivers is a real breeding bull.

We have had no problems with calving them out of our cows. The calves by Three Rivers are structurally very correct with great depth of rib, real thickness, a huge amount of muscle and are heavy boned. The bull calves are masculine and the heifer calves feminine. As a bonus the calves are jet black in colour with a soft hair and skin type.

We are extremely happy with how the Three Rivers calves are going at this stage.”

Little Meadows Angus
The Golding Family

3 weeks



T81 Bull calf

8 weeks



T115 Heifer calf

2 weeks



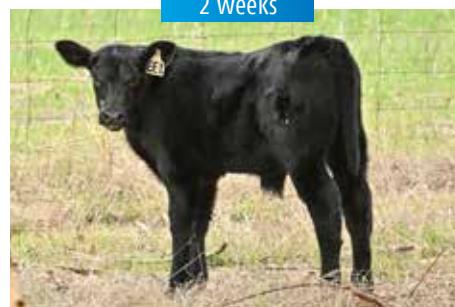
T126 Bull calf

7 weeks



T132 Bull calf - 7 weeks

2 weeks



T133 Bull calf

THREE RIVERS

011AN02263

Ellingson Three Rivers 8062 ^{PVPV}



- ▲ The breed leader for weaning and yearling growth
- ▲ He sires big bodied, stout made, high performing cattle
- ▲ Top 1% Foot Structure EBVs
- ▲ Popular high performance sire with exceptional structure – Top 1% growth EBVs, CWT and all breed indexes
- ▲ Early calves impressing breeders

PEDIGREE

Connealy Thunder
 CTS Remedy 1T01
 CTS 7V03 Bellemere Maid 9T02

— **Ellingson Homestead 6030**
 LT Territory 5824 of EA
 EA Erica 1082
 S A V Alliance 2606

S A V Resource 1441
 Ellingson Chaps 4095
 E A Blackcap 0360

— **EA Emblynette 6279**
 Sitz Upward 307R
 EA Emblynette 2159
 EA Emblynette 434

BULL INFORMATION

Registration #	USA19203618
Birthdate	20/02/2018
Genetic Testing	AMF,CAF,DDF,NHF,DWF,MAF,MHF,OHF,OSF,RGF

SELECTION INDEX

	\$A	\$A-L
Index Value	\$298	\$511
Breed Average	+\$193	\$334
Perc	1	1

	CED	CE Dtrs	GL	BW	200D	400D	600D	MCW	Milk	DTC	SS	CW	EMA	Rib	Rump	RYB %	IMF %	Doc	Angle	Claw
EBV	+2.2	+4.5	-4.8	+7.2	+82	+149	+184	+154	+17	-2.7	+1.5	+107	+8.7	-1.6	-3.5	+2.4	+1.7	-	+0.44	+0.44
Acc	42%	38%	60%	77%	76%	76%	74%	73%	73%	32%	71%	73%	70%	72%	63%	67%	67%	-	92%	95%
Perc	55	34	47	96	1	1	1	2	53	81	71	1	15	88	98	3	63	-	1	2

August 2022 TransTasman Angus Cattle Evaluation

BIG VALLEY

011AN01407

Connealy Big Valley ^{PVPV}



PEDIGREE

- ▲ Will add performance and improve carcass merit
- ▲ Powerfully built sire
- ▲ More muscle, more shape, more depth

Mogck Bullseye
 Hoover No Doubt
 Miss Blackcap Ellston J2

Connealy Dry Valley
 Summitcrest Complete 1P55
 Becca of Conanga 1617
 Brisha of Conanga 746 1237

Connealy Confidence 0100
 Connealy Greeley
 Precious of Conanga 0484

Bunty Lay of Conanga 4930
 G A R Predestined
 Bunty Lana of Conanga 4102
 Bunty Leah of Conanga 551

BULL INFORMATION

Registration #	USA19249322
Birthdate	30/01/2018
Genetic Testing	AMF,CAF,DDF,NHF,DWF,MAF,MHF,OHF,OSF,RGF

SELECTION INDEX

	\$A	\$A-L
Index Value	\$244	\$409
Breed Average	+\$193	\$334
Perc	9	8

	CED	CE Dtrs	GL	BW	200D	400D	600D	MCW	Milk	DTC	SS	CW	EMA	Rib	Rump	RBV %	IMF %	Doc	Angle	Claw
EBV	-3.7	+1.7	-2.5	+6.4	+69	+124	+154	+129	+12	-2.5	+2.5	+89	+7.5	-0.5	-2.7	+2.1	+1.7	-	+1.02	+1.04
Acc	47%	41%	67%	78%	76%	76%	75%	74%	72%	34%	72%	74%	70%	73%	65%	69%	69%	-	89%	91%
Perc	88	62	82	91	1	1	3	10	88	83	29	3	27	64	93	5	63	-	60	84

August 2022 TransTasman Angus Cattle Evaluation

DOUBLE PLAY

011AN01473

44 Double Play



- ▲ Big bodied power sire
- ▲ Outstanding carcass merit
- ▲ Breed leading growth and carcass \$Values
- ▲ Frame that weighs, weight that pays & Double Play does this easily with style to burn

PEDIGREE

Basin Payweight 0065
 Basin Payweight 1682
 21AR O Lass 7017

TEX Playbook 5437

Summitcrest Complete 1P55
 Rita 1C43 of 9M26 Complete
 Rita 9M26 of Rita 5F56 Pred

A A R Ten X 7008 S A
 V A R Discovery 2240
 Deer Valley Rita 0308

Vintage Rita 5008

Connealy Consensus 7229
 V A R Rita 3160
 Deer Valley Rita 7105

BULL INFORMATION

Registration #	+\$129
Birthdate	+\$117
Genetic Testing	AMF,CAF,DDF,NHF,DWF,MAF,MHF,OHF,OSF,RGF

SELECTION INDEX

	\$A	\$A-L
Index Value	+\$312	\$512
Breed Average	+\$193	\$334
Perc	1	1

	CED	CE Dtrs	GL	BW	200D	400D	600D	MCW	Milk	DTC	SS	CW	EMA	Rib	Rump	RBV %	IMF %	Doc	Angle	Claw
EBV	+2.2	+7.2	-6.6	+4.8	+81	+136	+167	+140	+20	-3.4	+2.2	+101	+8.8	-1.6	-1.6	+1.7	+2.3	-	+0.90	+1.06
Acc	52%	47%	67%	77%	77%	77%	75%	74%	74%	39%	71%	74%	71%	73%	66%	70%	69%	-	73%	73%
Perc	55	10	21	66	1	1	1	5	28	71	41	1	14	88	79	10	39	-	30	86

August 2022 TransTasman Angus Cattle Evaluation

BADGER

011AN01509 Baldridge Badger ^{PVPV}



- ▲ No Doubt x Isabel Y69 – A winning combination!
- ▲ This big scrotal, docile, high performing, muscular stud will be an asset to your program

MOGCK Sure Shot
MOGCK Bullseye
MOGCK Mary 1255

Hoover No Doubt

Syden C C & 7
Miss Blackcap Ellston J2
Miss Blackcap Ellston D154

Sitz Upward 307R
Styles Upgrade J59
Plainview Lassie 71B

Baldridge Isabel Y69

Baldridge Kabook K243
Baldridge Isabel T935
Baldridge Isabel P4527

BULL INFORMATION

Registration #	USA19478648
Birthdate	12/05/2018
Genetic Testing	AMF,CAF,DDF,NHF,DWF,MAF,MHF,OHF,OSF,RGF

SELECTION INDEX	\$A	\$A-L
Index Value	+\$276	\$449
Breed Average	+\$117	\$337
Perc	2	2

	CED	CE Dtrs	GL	BW	200D	400D	600D	MCW	Milk	DTC	SS	CW	EMA	Rib	Rump	RBV %	IMF %	Doc	Angle	Claw
EBV	+0.1	+2.9	+0.5	+5.3	+72	+127	+161	+124	+16	-2.8	+2.9	+89	+11.1	-1.4	-3.7	+3.2	+1.0	-	+0.72	+0.50
Acc	61%	49%	75%	84%	80%	80%	79%	78%	77%	40%	75%	77%	74%	76%	69%	73%	73%	-	75%	75%
Perc	70	51	99	76	1	1	1	15	60	80	18	3	4	85	98	1	86	-	5	3

August 2022 TransTasman Angus Cattle Evaluation

SERGEANT

011AN01536 Poss Sergeant ^{PVPV}



- ▲ High performance Colonel son with breed leading growth genetics
- ▲ Top 1% all growth EBVs and breed leading indexes

Hoover Dam
Baldridge Xpand x743
Baldridge Queen S87

Baldridge Colonel C251

Styles Upgrade J59
Baldridge Isabel Y69
Baldridge Isabel T935

Mytty In Focus
A A R Ten X 7008 S A
A A R Lady Kelton 5551

STF Rita B405

Sitz Upward 307R
STF Rita Y105
S V F Rita R080

BULL INFORMATION

Registration #	USA19454927
Birthdate	03/03/2019
Genetic Testing	AMF,CAF,DDF,NHF,DWF,MAF,MHF,OHF,OSF,RGF

SELECTION INDEX	\$A	\$A-L
Index Value	+\$284	\$486
Breed Average	+\$193	\$334
Perc	1	1

	CED	CE Dtrs	GL	BW	200D	400D	600D	MCW	Milk	DTC	SS	CW	EMA	Rib	Rump	RBV %	IMF %	Doc	Angle	Claw
EBV	+7.6	+7.3	-4.5	+3.5	+71	+132	+164	+129	+22	-3.1	+2.7	+92	+8.7	-0.3	-1.7	+1.6	+1.7	-	+1.00	+1.08
Acc	53%	48%	66%	78%	78%	77%	76%	75%	75%	40%	72%	75%	72%	75%	67%	71%	71%	-	72%	72%
Perc	12	10	52	35	1	1	1	11	18	75	23	2	15	58	81	12	63	-	55	88

August 2022 TransTasman Angus Cattle Evaluation

WRANGLER

011AN01535

Poss Wrangler



- ▲ Crowd favourite at 2020 Poss Sale
- ▲ Moderate framed, muscular and powerfully built
- ▲ Sound footed with fluid movement

Basin Payweight 006S
Basin Payweight 1682
21AR 0 Lass 7017

Poss Maverick

Poss Hoover Dam 2509
Poss Pride 5163
Poss Pride 9526

MCATL Triple Stack
Connealy Power Play
Boka Gena of Conanga 783

Poss Elmaretta 648

Connealy All Around
Poss Elmaretta 9104
Poss Elmaretta 227

BULL INFORMATION

Reg #	USA19448649			Birthdate	02/08/2019			Genetic Testing	AMF-CAF-D2F-DDF-M1F-NHF-OHF-OSF-RDF						
PRODUCTION								MATERNAL							
	CED	BW	WW	YW	RADG	DMI	YH	SC	HP	CEM	MILK	MW	MH	\$EN	
EPD	+4	+1.7	+89	+146	+30	+89	+7	+1.26	+13.5	+4	+33	+77	+6	-30	
Acc	.38	.70	.56	.50	.34	.34	.58	.55	.23	.32	.32	.39	.40		
Perc	70	65	2	5	10	50	30	25	30	85	15	30	25	85	
MANAGEMENT					CARCASS					\$VALUES					
	DOC	CLAW	ANGLE	PAP	HS	CW	MARB	REA	FAT	\$M	\$W	\$F	\$G	\$B	\$C
EPD	+28	+.45	+.47	+3.00	+.74	+69	+.88	+.81	+0.007	+84	+91	+110	+67	+176	+312
Acc	.49	.38	.37	.24	.26	.44	.39	.39	.38						
Perc	10	30	40	90	85	10	20	20	45	5	1	10	15	10	3

American Angus Association® August 4, 2022

WINSTON

011AN02301

BYERGO WINSTON 8460



- ▲ Proven herd sire from the heart of the Byergo program
- ▲ Performance sire with exceptional growth and power
- ▲ Top 1% growth EBVs, MCW & CWT

MCC Daybreak
Quaker Hill Rampage 0A36
QHF Blackcap 6E2 of4V16 4355

Byergo Oasis 6052

Byergo Sitting Bull 3500
Byergo Miss Elia 5899
Byergo Miss Elia 3442

Silveiras Conversion 8064
Byergo Black Magic 3348
Byergo Elia Cupcake 5900

Byergo Elia 5439

Byergo Mighty Mytty 6996
Byergo Miss Elia 0028
Byergo Miss Elia 8531

BULL INFORMATION

Registration #	USA19454927
Birthdate	03/03/2019
Genetic Testing	AMF,CAF,DDF,NHF,DWF,MAF,MHF,OHF,OSF,RGF

SELECTION INDEX	\$A	\$A-L
Index Value	+\$264	\$472
Breed Average	+\$193	\$334
Perc	3	1

	CE	CE Dtrs	GL	BW	200D	400D	600D	MCW	Milk	DTC	SS	CW	EMA	Rib	Rump	RYB %	IMF %	Doc	Angle	Claw
EBV	-1.9	-0.5	-2.8	+7.0	+79	+142	+182	+166	+18	-3.9	+2.3	+105	+7.8	-1.7	-3.2	+1.9	+1.9	-	+0.98	+0.98
Acc	44%	39%	63%	77%	75%	75%	74%	72%	72%	32%	67%	73%	69%	71%	63%	67%	66%	-	77%	77%
Perc	81	79	79	95	1	1	1	1	39	63	37	1	24	90	96	8	54	-	50	76

August 2022 TransTasman Angus Cattle Evaluation

MEGAHIT

011AN01314 Jindra Megahit ^{PVPV}



- ▲ A true power bull
- ▲ Scale crushing performance
- ▲ Superior phenotype -adds size & scale to offspring

TC Stockman 365
Hoff Investor S C 929
Hoff Miss Renovation S C 856

Hoff Blockbuster SC 929 1612

Shady Brook Prime 251F
Hoff Christine S C 7195 929
Hoff Bandi S C 009

Hoff Hi Flyer S C 7134
Hoff Heartland S C 456
Hoff Miss S C 1112

Hoff Sweetheart S C 216

Pack Power Scotch Cap 889
Hoff Lady Ace S C 884
Hoff Butterscotch S C 524

BULL INFORMATION

Registration #	USA17731559
Birthdate	09/01/2013
Genetic Testing	AMF,CAF,DDF,NHF,DWF,MAF,MHF,OHF,OSF,RGF

SELECTION INDEX

	\$A	\$A-L
Index Value	\$156	\$291
Breed Average	\$193	\$334
Perc	84	81

	CED	CE Dtrs	GL	BW	200D	400D	600D	MCW	Milk	DTC	SS	CW	EMA	Rib	Rump	RBV %	IMF %	Doc	Angle	Claw
EBV	-4.4	+3.9	-1.5	+5.1	+54	+93	+123	+122	+8	-1.1	+1.8	+69	+5.4	-4.1	-4.6	+2.6	+1.1	+12	+0.84	+1.24
Acc	60%	45%	91%	88%	85%	86%	84%	78%	75%	40%	81%	78%	72%	76%	70%	71%	71%	50%	82%	82%
Perc	90	40	91	72	28	37	35	17	99	94	58	42	60	99	99	2	84	37	18	98

August 2022 TransTasman Angus Cattle Evaluation

BLACKOUT

011AN01343 JINDRA BLACKOUT ^{PVPV}



- ▲ Outcross pedigree and physical standout
- ▲ Offers extra length of body and deep flank

Jindra Double Vision
Jindra 3rd Dimension
Jindras Sapphire J 417

Jindra Acclaim

Connealy Impression
Jindra Blackbird Lassy 1111
Jindras Enchantress J 102

N Bar Prime Time D806
G T Shear Force
G T Siskin 106

Jindra Judy J 1314 3150

S V F Bandler
Hoff Judy S C 669 1314
Hoff Miss Max S C 132

BULL INFORMATION

Registration #	USA18996457
Birthdate	21/02/2017
Genetic Testing	AMF,CAF,DDF,NHF,DWF,MAF,MHF,OHF,OSF,RGF

SELECTION INDEX

	\$A	\$A-L
Index Value	\$200	\$353
Breed Average	\$193	\$334
Perc	46	39

	CED	CE Dtrs	GL	BW	200D	400D	600D	MCW	Milk	DTC	SS	CW	EMA	Rib	Rump	RBV %	IMF %	Doc	Angle	Claw
EBV	+2.1	+1.2	-6.5	+4.7	+60	+107	+140	+121	+22	-1.0	+0.7	+88	+8.2	-1.2	-3.2	+2.6	+0.3	+1	+0.96	+0.86
Acc	59%	46%	85%	86%	81%	82%	81%	78%	76%	38%	75%	78%	73%	76%	70%	72%	72%	28%	92%	92%
Perc	56	67	22	64	9	9	10	18	15	95	93	3	19	81	96	2	97	72	45	52

August 2022 TransTasman Angus Cattle Evaluation

PACESETTER

011AN01340

KR Pacesetter ^{SVS}



- ▲ Outcross pedigree and physical standout
- ▲ Offers extra length of body and deep flank
- ▲ Short gestation with growth & fertility

PEDIGREE

SydGen 928 Destination 5420
 Prairie Pride Next Step 2036
 Flying V Miss Pride 426

RBM Step Ahead C80

EXAR 263C
 Basin Charisma U691
 Basin Charisma 4866

Sitz Dash 10277
 Barstow Cash
 Barstow Queen W16

KR Blackbird 4295

Summitcrest DARTH OX19
 WK Blackbird 2250
 Summitcrest Blackbird 22W1

BULL INFORMATION

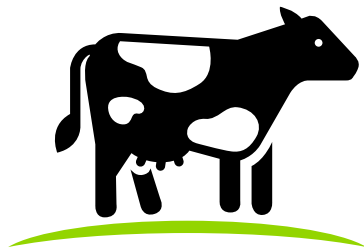
Registration #	USA18874634
Birthdate	15/02/2017
Genetic Testing	AMF,CAF,DDF,NHF,DWF,MAF,MHF,OHF,OSF,RGF

SELECTION INDEX

	\$A	\$A-L
Index Value	\$268	\$483
Breed Average	\$193	\$334
Perc	3	1

	CED	CE Dtrs	GL	BW	200D	400D	600D	MCW	Milk	DTC	SS	CW	EMA	Rib	Rump	RBV %	IMF %	Doc	Angle	Claw
EBV	+2.1	+5.6	-7.2	+6.2	+77	+136	+175	+160	+15	-4.0	+3.6	+104	+6.8	-1.5	-3.1	+2.1	+1.8	-	+0.92	+1.00
Acc	51%	38%	79%	81%	75%	75%	73%	72%	71%	29%	69%	72%	68%	71%	61%	66%	66%	-	68%	67%
Perc	56	23	15	89	1	1	1	1	66	61	6	1	37	87	96	5	59	-	35	79

August 2022 TransTasman Angus Cattle Evaluation



beacon

A U T O M A T I O N

BOVINE HEAT DETECTION

HEAT SEEKER™

- Progressive indication of heat cycle duration.
- Timing feature minimises false positives.
- No experience required to interpret patch results.
- Identify more cows in heat.
- Available in 3 colours.



Indicative results dependent upon the amount of bulling activity that has occurred.

SCRATCHE™

- Secure and easy to apply self-adhesive system.
- Highly visible from any angle.
- Progressive indication of heat cycle mounting activity.
- Economical and reliable.
- Available in 5 colours.



Indicative results dependent upon the amount of bulling activity that has occurred.

Beacon... for when you need to know

SHE'S IN HEAT!



FORECASTER

011AN01257

BALDRIDGE FORECASTER B160 PVPV



- ▲ Calving ease and carcass quality
- ▲ Powerfully built curve bender sire with high IMF
- ▲ Sired the record selling 250K son at Baldridge 21 sale

B A R Ext Traveler 205
C R A Bextor 872 5205 608
Cra Lady Jaye 608 498 S Easy

G A R Prophet

S S Objective T510 OT26
G A R Objective 1885
G A R 1407 New Design 2232

Rito 112 of 2536 Rito 616
GAR-EGL Protege
L B 6807 Isabel 339

Baldridge Pratissa W165

Connealy Lead On
Baldridge Pratissia S4
Baldridge Pratissia P259

BULL INFORMATION

Registration #	USA18203854
Birthdate	23/04/2014
Genetic Testing	AMF,CAF,DDF,NHF,DWF,MAF,MHF,OHF,OSF,RGF

SELECTION INDEX

	\$A	\$A-L
Index Value	\$282	\$462
Breed Average	\$193	\$334
Perc	1	1

	CED	CE Dtrs	GL	BW	200D	400D	600D	MCW	Milk	DTC	SS	CW	EMA	Rib	Rump	RBV %	IMF %	Doc	Angle	Claw
EBV	+6.4	-1.6	-2.5	+3.1	+66	+112	+141	+121	+17	-6.5	+1.0	+76	+4.7	-0.3	-0.7	-0.7	+4.3	+3	+0.76	+0.98
Acc	69%	61%	82%	90%	86%	84%	82%	81%	79%	54%	77%	81%	77%	79%	73%	76%	76%	59%	79%	79%
Perc	20	86	82	27	2	4	9	17	54	19	87	18	72	58	58	88	2	66	8	76

March 2022 TransTasman Angus Cattle Evaluation

PLATINUM

BELLASPUR ANGUS

Bellaspur Platinum P46 SSV



- ▲ Impressive Get Cracking son, displays muscularity, big bodied, structural correctness in a moderate frame
- ▲ Dam Erica M032, stylish Westward daughter from respectable Coolana breeding herd

Te Mania Yorkshire Y437
Te Mania Berkley B1
Te Mania Lowan Z53

Alloura Get Cracking G10

C A Future Direction 5321
Alloura Jedda Z15
Alloura Jedda X07

G A R Predestined
Werner Westward 357
BFF Everelda Entense 4015

Coolana Erica M032

Coolana Right Time C71
Coolana Juana Erica F232
Coolana Juana Erica A4

BULL INFORMATION

Registration #	GSP46
Birthdate	27/08/2018
Genetic Testing	AMF,CAF,DDF,NHF,DWF,MAF,MHF,OHF,OSF,RGF

SELECTION INDEX

	\$A	\$A-L
Index Value	\$204	\$353
Breed Average	\$193	\$334
Perc	42	40

	CED	CE Dtrs	GL	BW	200D	400D	600D	MCW	Milk	DTC	SS	CW	EMA	Rib	Rump	RBV %	IMF %	Doc	Angle	Claw
EBV	+1.3	+2.8	-1.3	+5.2	+49	+85	+110	+102	+12	-6.9	+1.6	+66	+9.6	+1.7	+1.5	-0.9	+3.4	-	+0.88	+0.72
Acc	62%	56%	83%	73%	73%	72%	73%	72%	68%	47%	72%	70%	67%	72%	69%	69%	68%	-	68%	68%
Perc	62	52	93	74	52	65	64	47	89	15	67	51	9	11	11	92	10	-	26	23

August 2022 TransTasman Angus Cattle Evaluation

HALLMARK

ASCOT CATTLE CO

Ascot Hallmark H147 ^{PVPV}



- ▲ Powerful, heavy muscled and attractive with superior structure
- ▲ Without fail, progeny inherit incredible length, easy fleshing and exceptional performance
- ▲ Top 1% Claw

PEDIGREE

Te Mania Yorkshire Y437
 Te Mania Berkley B1
 Te Mania Lowan Z53

Te Mania Emperor
 B T Ultravox 297E
 Te Mania Lowan Z74
 Te Mania Lowan V201

Booromooka Neutron A238
 Millah Murrah Digby D108
 Millah Murrah Flower A70

Millah Murrah Brenda F123
 Te Mania Infinity 04 379
 Millah Murrah Brenda D113
 Millah Murrah Brenda B21

BULL INFORMATION

Registration #	QQFH147
Birthdate	05/08/2012
Genetic Testing	AMFU,CAFU,DDF,NHFU

SELECTION INDEX

	\$A	\$A-L
Index Value	+\$202	\$374
Breed Average	\$193	\$334
Perc	45	24

	CED	CE Dtrs	GL	BW	200D	400D	600D	MCW	Milk	DTC	SS	CW	EMA	Rib	Rump	RBV %	IMF %	Doc	Angle	Claw
EBV	-4.9	+2.8	-5.3	+7.4	+61	+109	+154	+136	+17	-8.6	+3.6	+80	-1.0	+1.4	+0.7	-1.3	+2.3	+1	+0.80	+0.42
Acc	93%	82%	98%	98%	98%	98%	98%	97%	97%	75%	98%	95%	94%	95%	94%	93%	93%	96%	94%	94%
Perc	91	52	39	97	8	7	3	7	56	4	6	11	99	15	23	96	39	72	13	1

August 2022 TransTasman Angus Cattle Evaluation

KALUHA

ASCOT CATTLE CO Clunie Range Kaluha K330 ^{PVPV}



- ▲ Great presence, long bodied, exceptional fertility traits
- ▲ A great combination of growth, carcass and marbling

Te Mania Ambassador A134
Tuwharetoa Regent D145
Lawsons Hentry VIII Y5

Milwillah Gatsby G279

Te Mania Unlimited U3271
Milwillah Lowan D112
Milwillah Lowan B83

Te Mania Berkley B1
Te Mania Emperor E343
Te Mania Lowan Z74

Clunie Range Princess H381

G A R Predestined
Clunie Range Princess E64
Clunie Range Princess B216

BULL INFORMATION

Registration #	NBHK330
Birthdate	15/07/2014
Genetic Testing	AMFU,CAFU,DDFU,NHFU

SELECTION INDEX	\$A	\$A-L
Index Value	\$255	\$409
Breed Average	\$193	\$334
Perc	5	8

	CED	CE Dtrs	GL	BW	200D	400D	600D	MCW	Milk	DTC	SS	CW	EMA	Rib	Rump	RBV %	IMF %	Doc	Angle	Claw
EBV	+0.1	-8.6	-6.0	+5.1	+55	+96	+128	+111	+18	-10.6	+1.1	+87	+10.1	+1.0	-0.8	+1.1	+3.3	-11	+0.98	+0.76
Acc	80%	69%	97%	97%	95%	95%	95%	89%	85%	66%	95%	91%	90%	91%	90%	90%	89%	93%	88%	87%
Perc	70	99	28	72	25	29	25	32	45	1	84	4	7	22	60	25	12	94	50	31

August 2022 TransTasman Angus Cattle Evaluation

MIGHT & POWER

ASCOT CATTLE CO Millah Murrah Might & Power M176 ^{PVPV}



- ▲ High selling 2-year old - 2018 Millah Murrah sale
- ▲ Combines a beautifully balanced data set, excellent pedigree depth, superb structure and outstanding phenotype

B/R New Design 036
Booroomooka Theo T030
Booroomooka Quaint Q34+95

Millah Murrah Klooney K42

Te Mania Emperor E343
Millah Murrah Prue H4
Millah Murrah Prue F12

Schurrtop Reality X723
Matauri Reality 839
Matauri 06663

Millah Murrah Abigail K178

Millah Murrah Woody W100
Millah Murrah Abigail B64
Millah Murrah Abigail Y15

BULL INFORMATION

Registration #	NMMM176
Birthdate	12/07/2016
Genetic Testing	AMFU,CAFU,DDFU,NHFU

SELECTION INDEX	\$A	\$A-L
Index Value	\$197	\$350
Breed Average	\$193	\$334
Perc	49	42

	CED	CE Dtrs	GL	BW	200D	400D	600D	MCW	Milk	DTC	SS	CW	EMA	Rib	Rump	RBV %	IMF %	Doc	Angle	Claw
EBV	+4.4	+1.0	-7.4	+5.6	+52	+95	+113	+98	+15	-7.7	+3.8	+72	+6.7	+1.5	0.0	+0.9	+1.1	+19	+0.90	+0.80
Acc	73%	62%	96%	94%	89%	88%	88%	84%	74%	54%	86%	78%	76%	80%	78%	76%	76%	86%	70%	71%
Perc	36	69	13	81	39	32	57	55	69	8	5	29	38	14	39	32	84	16	30	39

August 2022 TransTasman Angus Cattle Evaluation

HERCULES

KINGISLE FARMS PTY LTD

Ayrvale Hercules H9 ^{PVPV}



- ▲ Proven performer with great transmitting ability
- ▲ Unmatched for calving ease, growth and carcass
- ▲ Sons at Texas Angus average \$53000
- ▲ Female sexed semen available



Progeny
Texas Angus

PEDIGREE

B/R New Dimension 7127
Te Mania Bartel B219
Te Mania Jedda W85

Ayrvale Bartel E7

Mytty In Focus
Eaglehawk Jedda B32
Eaglehawk Jedda Z48

G A R Solution
Lawsons Invincible C402
Lawsons Predestined A598

Lawsons Invincible F338

TC Total 410
Lawsons Total D1152
Lawsons Yield Grade A555

BULL INFORMATION

Registration #	H10H9
Birthdate	01/09/2012
Genetic Testing	AMF,CAF,DDF,NHF,MAF

SELECTION INDEX

	\$A	\$A-L
Index Value	\$253	\$390
Breed Average	\$193	\$334
Perc	6	16

	CED	CE Dtrs	GL	BW	200D	400D	600D	MCW	Milk	DTC	SS	CW	EMA	Rib	Rump	RBV %	IMF %	Doc	Angle	Claw
EBV	+5.2	+8.1	-8.4	+1.9	+49	+85	+113	+77	+28	-5.7	+1.1	+81	+10.6	+0.7	+0.4	+0.2	+3.1	+15	+0.98	+1.06
Acc	94%	84%	99%	99%	98%	98%	98%	97%	97%	74%	98%	94%	94%	94%	94%	92%	93%	98%	98%	98%
Perc	29	6	7	10	53	63	57	86	2	31	84	9	5	29	29	61	16	26	50	86

August 2022 TransTasman Angus Cattle Evaluation

011AN01339

Poss Marvel



- ▲ High performing and powerfully built
- ▲ Breed leading growth
- ▲ Superior carcass merit
- ▲ Male & Female sexed semen available

PEDIGREE

Mytty In Focus
 A A R Ten X 7008 S A
 A A R Lady Kelton 5551

V A R Discovery 2240
 Sitz Upward 307R
 Deer Valley Rita 0308
 G A R Objective 2345

Poss Easy Impact 0119
 Poss Element 215
 Poss Erica 004

Poss Elmaretta 505
 Baldridge Waylon W34
 Poss Elmaretta 341
 Poss Elmaretta 543

BULL INFORMATION	
Registration #	USA18962518
Birthdate	29/01/2017
Genetic Testing	AMF-CAF-D2F-DDF-M1F-NHF-OHF-OSF-RDF

	PRODUCTION								MATERNAL						
	CED	BW	WW	YW	RADG	DMI	YH	SC	HP	CEM	MILK	MW	MH	\$EN	
EPD	+1	+2.9	+93	+168	+.29	+2.51	+1.2	+1.12	+14.7	+6	+21	+148	+1.5	-57	
Acc	.43	.67	.60	.52	.38	.38	.57	.52	.30	.35	.36	.42	.45		
Perc	90	85	1	1	15	95	3	30	20	75	80	1	1	95	
	MANAGEMENT					CARCASS				\$VALUES					
	DOC	CLAW	ANGLE	PAP	HS	CW	MARB	REA	FAT	\$M	\$W	\$F	\$G	\$B	\$C
EPD	+32	+.57	+.46	+5.50	+.83	+69	+1.07	+.37	+.027	+53	+69	+106	+68	+174	+279
Acc	.43	.32	.32	.29	.31	.47	.42	.42	.41						
Perc	2	80	35	95	95	10	10	80	70	65	20	15	15	10	15

American Angus Association® August 3, 2022

TOPPER

011AR03067 Mushrush Topper



BULL INFORMATION

Reg # 3525067
Birthdate 22/03/2016

- ▲ Go-to bull for next program
- ▲ Proven maternal line producing successfully around the world
- ▲ Very correct phenotype

BKT Clifftop TP R288
Beckton Clifftop W692 E3
Beckton Lydia S274 EP

Beckton Clifftop Z500 E4

Beckton Epic K4 N795
Beckton Tamara R291 EP
Beckton Tamara N456 VG

Beckton Lancer F442 T
BUF CRK Lancer R017
BUF CRK Juliet N036

Mushrush Lana 84S A033

BUF CRK Lancer R017
Mushrush Lana IM W203
Mushrush WR Lana P272



	INDEX			PERFORMANCE						MATERNAL					CARCASS				
	PRO\$	HB	GM	CE	BW	WW	YW	ADG	DMI	MM	ME	HPG	CEM	STAY	MARB	YG	CW	REA	BF
EPD	+31	+8	+24	+16	-3.0	+76	+128	+32	+1.82	+26	12	+4	+9	+11	+14	+22	+38	+0.02	+0.04
Acc	-	-	-	51	57	54	54	54	30	28	25	27	32	34	42	38	50	48	38
Perc	96	96	69	15	28	10	8	7	80	45	90	99	17	89	94	95	12	66	84

August 2022, Red Angus Association of America

HEDGE FUND

011AR03074 LSF SRR Hedge Fund 7017E



BULL INFORMATION

Reg # 3723117
Birthdate 06/01/2017

- ▲ Exceptional calving ease, growth sire
- ▲ Ideal for cattlemen who appreciate performance
- ▲ Sire genetically one of the breed's best

HXC Conquest 4405P
LSF Takeover 9943W
LSF Widelode R5014 U8061

H2R Profitbuilder B403

Beckton Nebula P P707
Brown Ms P707 Y6674
Brown Ms Mission Stmt T6963

LSF Night Calver 9921W
LSF Prospect 2035Z
LSF Blackbird N3080 X0406

LSF SRR Dina C5128

HXC Conquest 4405P
LSF SRR Dina Y1094 A3016
LSF Dina U8042 Y1094

	INDEX			PERFORMANCE						MATERNAL					CARCASS				
	PRO\$	HB	GM	CE	BW	WW	YW	ADG	DMI	MM	ME	HPG	CEM	STAY	MARB	YG	CW	REA	BF
EPD	+127	+58	+70	15	-4.2	+79	+140	+38	+1.70	+23	+7	+15	+11	+12	+7.3	+27	+34	+0.08	+0.08
Acc	-	-	-	55	61	55	56	56	32	27	18	27	34	36	47	40	52	50	40
Perc	6	39	3	16	12	3	1	1	78	71	76	5	2	83	4	99	12	59	99

August 2022, Red Angus Association of America

EXECUTIVE

011SM02046 EGL Executive Order E019



BULL INFORMATION

Reg # 3355483
Birthdate 20/02/2017

- ▲ Calving ease sire with exceptional phenotype
- ▲ Breed leading indexes
- ▲ Homozygous polled and black
- ▲ SimAngus (7/16 SM x 9/16 AN)

Nichols Legacy G151
Hooks Shear Force
C&D Tracy

Hook's Beacon 56B

GW Predestined 701T
Hooks Zafirah 41Z
Hook's Uno 54U

B/R New design 036
B/R Frontier 095
White Fence Pride H1

EGL Miss Frontier 4087

TC Stockman 365
EGL 0404
EGL 7329

	PERFORMANCE					MATERNAL					CARCASS						INDEX	
	CE	BW	WW	YW	ADG	MCE	MILK	MWW	STAY	DOC	CW	YG	MRB	BF	REA	SHR	API	TI
EPD	+13.0	-.7	+73.2	+116.7	+.27	+9.8	+23.5	+60	+23.1	+12.5	+35.3	-.05	+.91	+.016	+.63	-.36	+181.4	+92.4
Acc	.55	.59	.59	.61	.61	.38	.31	.39	.37	.49	.58	.46	.52	.49	.57	.05		
Perc	45	30	60	50	45	10	45	55	1	45	40	95	2	99	60	45	2	10

July 26 2022, American Simmental Association

LODESTAR

011SM02068 IR LODESTAR



BULL INFORMATION

Reg # 3839823
Birthdate 09/10/2020

- ▲ SimAngus 1/2 SM x 1/2 AN
- ▲ Featured & high selling bull at Irvine Ranch
- ▲ Big time spread bull offering CE and exceptional performance
- ▲ Homozygous black & polled

GW Predestined 701T
GW Step Out 672X
GW Miss Lucky Charm 832P

Redhill 672X X004 231A

GW Premium Beef 021TS
GW Miss Prem Beef X004
GW Miss Quarter 538U

Hooks Shear Force 38K
Hook's Beacon 56B
Hooks Zafirah 41Z

IR Ms Lucy E711

G A R Prophet5
EXAR Lucy 5643
EXAR Lucy 0901

	PERFORMANCE					MATERNAL					CARCASS						INDEX	
	CE	BW	WW	YW	ADG	MCE	MILK	MWW	STAY	DOC	CW	YG	MRB	BF	REA	SHR	API	TI
EPD	+17.2	-3.2	+80.8	+128.7	+.30	+12.2	+13.5	+53.9	+17.2	+16.4	+38.3	-.26	+1.11	-.004	+1.15	-.35	+194.8	+105.5
Acc	.42	.45	.48	.49	.49	.26	.19	.27	.30	.35	.50	.40	.44	.45	.48	.05		
Perc	10	10	30	25	25	1	99	85	30	10	30	45	1	95	2	50	1	1

July 26 2022, American Simmental Association

PIONEER

011HP01040 TH 745a 358C Pioneer 297F



- ▲ Complete package of CE, growth & carcass
- ▲ Well balanced, heavy muscled with sound structure
- ▲ Outcross pedigree

TH 223 711 Victor 755T
 TH 89T 755T Stockman 475Z
 TH 16G 20N Gemini 89T

TH 403A 475Z Pioneer 358C

TH 22R 16S Lambeau 17Y
 TH 71U 17Y Rita 403A
 TH 7N 45P Rita 71U

SHF Rib Eye M326 R117
 Boyd Worldwide 9050 ET
 MSU TCF Rachael 22S ET

Rangeline 11Y Miss World 745A

TH 122 711 Victor 719T
 Rangeline 60S Tear Drop 11Y
 Rangeline 4G Tear Drop 60S

BULL INFORMATION

Registration #	THSR064
Birthdate	05/04/2020
Genetic Testing	IEF DLF HYF MSUDF

SELECTION INDEX

	Southern Self-Replacing Index (\$)	Northern Self-Replacing Index (\$)	Southern Baldy Maternal Index (\$)	Northern Baldy Maternal Index (\$)
Index Value	+\$183	\$171	\$198	\$146
Breed Average	+\$132	\$119	\$134	\$98

	CED %	CEDtrs %	GL days	BW kg	200 days	400 days	600 days	MCW kg	Milk kg	SC cm	DTC days	CWT kg	EMA sq.cm	RIB F mm	RUMPF mm	RBV %	IMF %	D
EBV	+6.7	-	-1.2	+4.4	+47	+77	+100	+78	+21	+2.7	-	+63	+5.5	+0.8	+0.3	+1.6	-0.1	-
Acc	25%	-	47%	53%	53%	53%	53%	49%	47%	51%	-	47%	40%	44%	44%	37%	43%	-

July 2022 Hereford BREEDPLAN

NEW YORK

011HP01039 R New York 5083



- ▲ Proven calving ease sire
- ▲ Trait leader for 12 of 20 EPDs and Indexes in breed
- ▲ Sons have topped Rausch's Bull Sale
- ▲ Heterozygous polled

MSU Victoria 9F
 Loewen Miss P20 10W
 SHF Progress P20

MSU MF Hudson 19H

Loewen M326 Miss 39T
 MSU WNH Felton 5F
 R Miss Puckster 971

R Miss Patend 074
 R Miss Revolution 159
 MSU TCF Revolution 4R

R Puckster 2586

R Miss Wrangler 3097
 R Puckster 2013

BULL INFORMATION

Registration #	P43399385
Birthdate	01/04/2013

	PERFORMANCE						MATERNAL						CARCASS				\$VALUES			
	CED	BW	WW	YW	DMI	SC	SCF	MILK	M&G	CEM	MCW	UDDER	TEAT	CW	FAT	REA	MARB	\$BMI	\$BII	\$CHB
EPD	+4.1	+3	+74	+104	+1	+1.4	+23.4	+24	+61	+3	+84	+1.50	+1.50	+85	+0.37	+54	+1.12	\$477	\$573	\$137
Acc	.61	.83	.75	.74	.10	.60	.36	.51	-	.49	.40	.64	.66	.32	.39	.31	.33	-	-	-

August 2022, American Hereford Association

NOCKOUT

TARCOMBE HEREFORDS

TARCOMBE NOCKOUT R064

POLLED HEREFORD



- ▲ Calving ease sire
- ▲ Will add growth & carcass quality to any program
- ▲ Free moving sire with great feet & legs
- ▲ 100% pigment on both eyes
- ▲ Homozygous polled
- ▲ 15 of 22 traits in top 20% of the breed

PEDIGREE

Wirruna Hartwig H237
 Wirruna Kalimna K326
 Wirruna Cora H303

Yavenvale Nockout N312
 Minlacowie Griffin
 Yavenvale Corisande L385
 Yavenvale Corisande H143

Elite 4110 H297
 Banemore Elite M102 AI
 Banemore Summer Day A009

Banemore Last Day P084
 Banemore Echucah16
 Banemore Lastday 14 AI
 Banemore Last Day D76

BULL INFORMATION

Registration #	THSR064
Birthdate	05/04/2020
Genetic Testing	IEF DLF HYF MSUDF

SELECTION INDEX	Southern Self-Replacing Index (\$)	Northern Self-Replacing Index (\$)	Southern Baldy Maternal Index (\$)	Northern Baldy Maternal Index (\$)
Index Value	+\$229	\$218	\$231	\$163
Breed Average	+\$132	\$119	\$134	\$98

	CED %	CEDtrs %	GL days	BW kg	200 days	400 days	600 days	MCW kg	Milk kg	SC cm	DTC days	CWT kg	EMA sq.cm	RIB F mm	RUMPF mm	RYB %	IMF %	D
EBV	+7.2	+5.4	-1.9	+2.9	+41	+73	+102	+69	+18	+4.3	-5.6	+73	+4.5	+1.8	+2.6	+0.5	+2.1	-
Acc	44%	31%	64%	73%	68%	68%	71%	62%	54%	76%	38%	61%	50%	57%	61%	52%	59%	-%

July 2022 Hereford BREEDPLAN

VENTURE

011CH01028 LT Venture 3198



BULL INFORMATION

Registration # OAUJ5612E
 Birthdate 11/03/2013

- ▲ High fertility sire, ideal for FTAI
- ▲ Strong maternal line out of a proven dam
- ▲ Use Venture for feet improvement, excellent temperament & body type

LT Western Spur 2061 PLD
 LT Western Edge 4057 PlD
 LT Duchess of Mac 7076 P

LT Stagecoach 8068 PlD

LT Wyoming Wind 4020 PlD
 LT Lady Macbeth 2131 PlD
 LT Lady Macbeth 8413 ET P

LT Unlimited Ease 9108
 LT Easy Pro 1158 PlD
 LtT Lady Macbeth 8413 ET P

LT Ballet 9219 Polled

Eatons Leader 2233 P
 LT Ballet 6233
 LT Ballet 0024 PlD



SELECTION INDEX	Domestic Terminal Index (\$)	Northern Maternal Index (\$)
Index Value	\$39	\$91
Breed Average	\$24	\$38

	CED	CE Dtrs	GL	BW	200D	400D	600D	MCW	Milk	SS	CW	EMA	Rib	Rump	RBY %	IMF %
EBV	+11.1	-2.8	-3.9	-4.5	+14	+38	+45	+29	+28	+2.9	+35	+1.3	+3.6	+4.5	-2.9	+0.7
Acc	87%	78%	97%	97%	95%	95%	94%	88%	90%	94%	85%	75%	85%	84%	77%	75%

July 2022 Australasian Charolais BREEDPLAN Analysis

LOW RIDER

011CH01027 Cedarlea Low River 105F



BULL INFORMATION

Registration # PMC744233
 Birthdate 06/02/2018

- ▲ Calving ease sire
- ▲ Moderate framed individual with muscle and mass
- ▲ Strong maternal traits
- ▲ Polled Purebred

LT Bluegrass 4017 P
 LT Ledger 0332P
 LT Brenda 6120 PLD

Circle Cee Legend 307A

D R Revelation 467
 Circle Cee Stunning 125Y
 HFCC White Promise 34L

KAYR Grid Grid Iron 400S
 CSS Sir Gridmaker 2W
 CSS Red Navigator 1T

Cedarlea Yoshi 71Y

FFBB Roper PLD 5106R
 Cedarlea Ubee A Roper 66U
 Cedarlea Pssst 13P

	CED	BW	WW	YW	MILK	MCE	MTL	SC	UDDR	TEAT	CW	REA	FAT	MARB	TSI
EPD	+13.5	-5.3	+30	+63	+15	+11.9	+30	+5	+1.14	+1.12	+2	+5.7	+0.35	+0.04	+213.35
Acc	.10	.14	.10	.09	.07	.07	.08	.07	.07	.07	.07	.07	.06	.06	
Perc	5	3	100	100	90	5	100	85	35	30	90	60	95	70	100

AICA July 2022

MASTERCHEF

DELTA WAGYU THE WRIGHT WAGYU MASTER CHEF E146



BULL INFORMATION

Registration #	ACCFE0146
Birthdate	23/09/2009
Genetic Testing	B3F, CHSF, CL16F, F11C, F13F, IARSFU

	GL	BW	200D	400D	600D	Mat Cow Weight	Milk	SS	CW	EMA	Rump	RBV %	Marble Score	Marble Fineness
EBV	+1.5	+5.0	+31	+45	+72	+87	+6	+3.1	+55	-4.1	+2.7	-0.8	-0.1	+0.06
Acc	70%	87%	83%	83%	83%	73%	74	58%	71%	55%	59%	57%	51%	41%

August 2022 Wagyu BREEDPLAN

- ▲ Ultimate growth bull
- ▲ 2015 World Champion Bull
- ▲ Suited to breeders looking to increase their carcass yield and turn calves off early

Pedpamitsu Dai 10 Mitsumau 76
Hikari J251830R
Pedfakazut Kazutomo 92958

TWA Kajikari

Haruhime 221
Ume Mta 251352
Noriko 2920 FB437

Dai 2 Shigenami 27
Shigemaru
Dai 4 Akibare 3357

Kalanga Shigehomare B234

Hikari J251830R
Kalanga Hikahomare VW36
RWA Homare Blue 2

SELECTION INDEX	Wagyu Breeder	Self Replacing	Fullblood Terminal	F1 Terminal
Index Value	\$158	\$107	\$94	\$51
Breed Average	\$151	\$151	\$127	\$116

BIG AL

DELTA WAGYU Sumo Cattle Co Big Al K401



BULL INFORMATION

Registration #	SM0FK0401
Birthdate	10/08/2014
Genetic Testing	B3FU, CHSFU, CL16FU, F1150%, IARSFU

	GL	BW	200D	400D	600D	Mat Cow Weight	Milk	SS	CW	EMA	Rump	RBV %	Marble Score	Marble Fineness
EBV	+0.5	+4.4	+28	+44	+68	+53	+8	+4.6	+57	-3.5	+3.8	-0.7	-0.3	0.00
Acc	36%	51%	51%	51%	50%	45%	50	43%	48%	41%	42%	41%	42%	35%

August 2022 Wagyu BREEDPLAN

- ▲ Produces calves that are bigger, stronger & heavier than other bulls
- ▲ Proven maternal line producing successfully around the world

Dai 2 Mitsumaru
Dai 10 Mitsumau 76
Godai

HB Big Al Q502

Namimaru
Mta Akiko
Mitsuko B 9639

Dai 2 Shigenami 27
Shigemaru
Dai 4 Akibare 3357

Sumo Cattle Co Nichibotsu C183

Hikari J251830R
TWA Shichikari
MTA Akiko FB2120

SELECTION INDEX	Wagyu Breeder	Self Replacing	Fullblood Terminal	F1 Terminal
Index Value	\$105	\$56	\$84	\$43
Breed Average	\$151	\$151	\$127	\$116

RAPTOR

BLUE SPARK SPECKLE PARK

Blue Spark Raptor



PEDIGREE

- ▲ Excellent structure and docility
- ▲ Great calving ease, short gestation with curve bending growth
- ▲ Dam is sound, easy keeping dtr of Eagle
- ▲ High demand sire

Redneck Wild Willy 2W
 Semex Alliance Yogi Goes Redneck
 Aspen Acres Linda Lou 10L

Johner Stock Farm Trade Secret
 River Hill Show Biz 93S
 Monnery River 7W
 Monnery River 7P

Codiak Crikey GNK 13U
 Codiak Eagle GNK 46Y
 Codiak Nice Lady RKW 25N

Blue Spark H9 Exquisite P03
 Spknz Extreme E27
 Botta of Conanga 0583
 Bunderra 68L Star Bank D5

PROGENY OF RAPTOR



BULL INFORMATION

Registration #	BSP R01
Birthdate	15/02/2020
Genetic Testing	RGF NT821F T/T

	GL	BW	200D	400D	600D	MCW	Milk	SS	CW	EMA	Rib	Rump	RBV %	IMF %
EBV	-3.1	+1.2	+19	+36	+41	+42	+1	+1.4	+24	+0.3	+0.2	+0.2	-0.2	-0.1
Acc	58%	71%	67%	64%	63%	52%	43%	66%	53%	39%	46%	46%	44%	40%

DUST N SMOKE

WATTLE GROVE SPECKLE PARK

Wattle Grove Dust N Smoke P07



- ▲ Beef Australia Grand Champion Bull 2021
- ▲ Semen rights sold to Speckle Park Brazil for \$45K
- ▲ Super strong pedigree from two of the best in the Wattle Grove herd
- ▲ Free moving, smooth shouldered, super soft and deep

PEDIGREE

Codiak Oscar GNK 85
 Codiak Putnam GNK 61Y
 Northern Lights 14N

— **Wattle Grove Smoke and Mirrors L275**
 Raven Meadows Magnum 10N
 Codiak Good Golly GNK 11U
 Spots 'N Sprouts 3K

Prairie Hill Durmax 93N
 Prairie Hill John Wayne 50S
 Prairie Hill Nabob 50N

— **Wattle Grove Star Dust E2**
 P.A.R Impact 11G
 Codiak RKW 07J
 ATIM Lady 3D

BULL INFORMATION

Registration #	WGS P07
Birthdate	25/06/2018
Genetic Testing	RGF NT821F

	GL	BW	200D	400D	600D	MCW	Milk	SS	CW	EMA	Rib	Rump	RBV %	IMF %
EBV	-0.4	+1.1	+13	+21	+30	+33	+4	-0.2	+19	+0.4	+0.1	+0.1	-0.1	+0.2
Acc	53%	76%	69%	69%	70%	58%	43%	50%	59%	48%	56%	56%	53%	46%

July 2022 Speckle Park BREEDPLAN

FEARLESS

011LM01015 Cell Fearless



BULL INFORMATION

Registration # LFM2174270
Birthdate 09/01/2018

	GL	CED	BW	WW	YW	MILK	TM	CEM	SC	ST	DOC	YG	CW	REA	FT	MARB	\$MTI
EPD	-2	+10	+2.1	+81	+132	+18	+59	+3	+1.55	+11	+12	-.01	+51	+79	+0.03	+0.31	+66.06
Acc	.20	.43	.45	.44	.45	.24		.28	.21	.31	.44	.39	.49	.47	.42	.45	

NALF August 2022

- ▲ Homozygous polled & black
- ▲ High performance sire

R R Rito 707
Rito 707 of Ideal 340 707S
Ideal 3407 of 1418 076

S A V Resource 1441

S AV 8180 Traveler 004
S A V Blackcap May 4136
S AV May 2397

JCL Lodestar 27L
LH Rodemaster 338R
Vermilion E Blackbird 9546

Mags UR Salina

BR Midland
Mags Salina
Mags Lady Ace

COLISEUM

011SE01615 SNV COLISEUM 3115A E.T.



BULL INFORMATION

Registration # 1301923
Birthdate 10/26/2013

	BW	WW	YW	Mat. Milk	Mat. M & G
EBV	+1.6	+18	+22	+17	+26
Acc	.50	.33	.12	.16	

August 2022 Senepol Cattle Registration System

- ▲ Excels on conformation and soundness
- ▲ Very balanced numbers, consistent on growth with strong maternal features

CN 6013D
CN 6747J
CN 6047D

CN 811R

CN6544H
CN 138K
CN 6621H

WC 947B
PRR 9205J
WC 5813

PRR 4092P

ASL BIG ED HU47
CRSC 69E E.T.
ASL QUEEN 156U E.T.

SPRING 2022 PRICE LIST

ANGUS	Price	\$ > 50 Units	Sexed
44 Double Play	\$35		
Ascot Evident H146	\$35		
Ascot Hallmark H147	\$50		
Ayrvale Hercules H9	\$35		\$85
Baldrige 38 Special	\$45	\$35	
Baldrige Badger	\$40		
Baldrige Forecaster	\$45	\$35	
Bellaspur Platinum P46	\$40		
Byergo Winston 8460	\$40		
Clunie Range Kaluha K330	\$40		
Connealy Big Valley	\$50		
Ellingson Three Rivers	\$60		
Jindra Blackout	\$35		
Jindra Megahit	\$50		
KCF Bennett Culmination	\$40		
KR Pacesetter	\$35		
Might and Power	\$55		
Poss Marvel	sexed only		\$45
Poss Sergeant	\$35		\$55
Poss Wrangler	\$35		
Roseda Powerplant	\$50		
SAV Pursuit	\$50		
SAV Ten Percent 3085	\$25		male \$60
Stellar Quicksilver Q7**	\$50		
Woodhill Patent	\$40		

RED ANGUS

Hedge Fund	\$40		
McPhee Trophy	\$50	\$35	
Mushrush Topper	\$40		
Red Dwajo Sundance 114A	\$50		

BRAHMAN

Alta Supercalc	\$30		
----------------	------	--	--

BLONDE D'AQUITAINE

Arsha's Polled Umpire	\$25		
-----------------------	------	--	--

CHAROLAIS

	Price
Cedarlea Low Rider	\$30
LT Venture PP	\$50

POLLED HEREFORD

400z Empire	\$25
Ironbark Rambo G063	\$40 \$20 comm
Remital Sleep Easy 68U	\$25
R New York	\$40
Tarcombe Nockout R064	\$40
TH 745A 358C Pioneer 297F	\$40

SENEPOL

Coliseum	\$30
----------	------

POLLED SHORTHORN

Moombi Ooktali G34	\$40 \$20 comm
--------------------	----------------

SIMMENTAL

EGL Executive (SimAngus)	\$25
IR Lodestar (SimAngus)	\$35
IPU Liner	\$35
SFJ Altas Blaze 102Y	\$45

SPECKLE PARK

Blue Spark Raptor	\$35
Petemar Special Edition 2D	\$50
Wattle Grove Dust N Smoke	\$30

LIMOUSIN

Cell Fearless PP (Lim-Flex)	\$25
Sauvignon	\$50

WAGYU / AKAUSHI

Big AI**	\$50
Evidence**	\$50
Masterchef	\$250

** volume discount available

All bulls with traits highlighted in their proof are in the TOP 15% or higher for that trait!



Alta Genetics Australia

Melbourne Head Office (03) 8336 1458
info.au@altagenetics.com | australia.altagenetics.com/beef

TONY SIMPSON

Beef Programs Manager | 0427 341 458

KIRRILY LUMSDEN

Beef Sales and Support | 0428 529 275

ANDREW MEDHURST

Regional Sales | 0459 957 169

GARY JONES

Regional Sales | 0438 830 865