



Twin-Birch Bettman 1915

- ▲ High BPI 328
- ▲ +0.38% P
- ▲ +0.61% F
- ▲ +54 kg CFP
- ▲ A2A2
- ▲ Moderate frames

BPI 328 77%
TWI 290 76%
HWI 270 71%

AltaBETTMAN

011H011316

BOMAZ AltaBETTMAN-ET
 ROBUST x MAN-0-MAN
 HOUSAM000071074447 | DOB 12/16/2011
 Genetic Code: A22

USA Proof

e A2

TYPE PROOF (ABV August 2018)

Overall Type	101	Rear Set	99
Mammary System	104	Rear Leg Rear View	98
Stature	100	Udder Depth	104
Udder Texture	101	Fore Attachment	100
Bone Quality	101	Rear Attachment Height	104
Angularity	96	Rear Attachment Width	100
Muzzle Width	99	Centre Ligament	105
Body Depth	93	Teat Placement (front)	104
Chest Width	94	Teat Placement (rear)	108
Pin Width	98	Teat Length	86
Pin Set	96	Loin Strength	97
Foot Angle	98		

Dtr: 0 Herds: 0 74%R

ASI 197

PRODUCTION (ABV August 2018)

Milk	-118 L		
Fat	37 kg	+0.61	%
Protein	17 kg	+0.38	%
Dtr: 0 Herds: 0 84%R			

HEALTH

Cell Count	127	87	%R
Survival	106	71	%R
Liveweight	97	77	%R
Dtr. Fertility	112	82	%R
Calving Ease	102	70	%R

WORKABILITIES

Milking Speed	104
Temperament	101
Likability	102

Dtr: 0 Herds: 0 73%R



Twin-Birch Matt 2274

- ▲ Impressive Australian daughters
- ▲ Great mix of components, health and Type
- ▲ 111 Daughter Fertility

BPI 269 74%
TWI 299 73%
HWI 260 69%

AltaMATT

011H011421

MELARRY AltaMATT-ET
 NUMERO UNO x EXPLODE
 HOUSAM000072395528 | DOB 2/2/2013
 Genetic Code: A12

USA Proof

CONCEPT PLUS

TYPE PROOF (ABV August 2018)

Overall Type	107	Rear Set	95
Mammary System	108	Rear Leg Rear View	100
Stature	105	Udder Depth	110
Udder Texture	105	Fore Attachment	108
Bone Quality	108	Rear Attachment Height	113
Angularity	98	Rear Attachment Width	96
Muzzle Width	94	Centre Ligament	103
Body Depth	94	Teat Placement (front)	104
Chest Width	95	Teat Placement (rear)	99
Pin Width	106	Teat Length	95
Pin Set	101	Loin Strength	97
Foot Angle	105		

Dtr: 0 Herds: 0 78%R

ASI 50

PRODUCTION (ABV August 2018)

Milk	184 L		
Fat	19 kg	+0.16	%
Protein	5 kg	0.00	%
Dtr: 17 Herds: 5 78%R			

HEALTH

Cell Count	177	85	%R
Survival	111	72	%R
Liveweight	100	80	%R
Dtr. Fertility	111	76	%R
Calving Ease	102	79	%R

WORKABILITIES

Milking Speed	104
Temperament	101
Likability	102

Dtr: 1 Herds: 1 76%R



View-Fort Regal 5251

- ▲ High ranking Australian sire
- ▲ Extreme SCS with great Milking Speed
- ▲ Farmer favourite

BPI 256 87%
TWI 283 86%
HWI 201 80%

▶ **TYPE PROOF** (ABV August 2018)

Overall Type	105	Rear Set	103
Mammary System	105	Rear Leg Rear View	98
Stature	108	Udder Depth	108
Udder Texture	103	Fore Attachment	110
Bone Quality	104	Rear Attachment Height	103
Angularity	104	Rear Attachment Width	94
Muzzle Width	93	Centre Ligament	101
Body Depth	100	Teat Placement (front)	106
Chest Width	97	Teat Placement (rear)	102
Pin Width	100	Teat Length	100
Pin Set	96	Loin Strength	96
Foot Angle	107		

Dtr: 82 Herds: 35 86%R

AltaREGAL 011H011138

COOMBOONA SUPER REGAL-IMP-ET
 SUPER x SHOTTLE
 HOAUSM000H01620990 | DOB 9/8/2010
 Genetic Code: A12

USA Proof

▶ **ASI 122**

▶ **PRODUCTION** (ABV August 2018)

Milk	298	L		
Fat	16	kg	+0.14	%
Protein	22	kg	+0.11	%
Dtr: 315 Herds: 68 98%R				

▶ **HEALTH**

Cell Count	182	90	%R
Survival	108	80	%R
Liveweight	104	88	%R
Dtr. Fertility	107	87	%R
Calving Ease	99	88	%R

▶ **WORKABILITIES**

Milking Speed	102
Temperament	104
Likability	104

Dtr: 69 Herds: 22 79%R



Crackholm AltaROBLE Buckle

- ▲ Still #1 for Mamm 116
- ▲ Improving with every proof round
- ▲ BPI 252 with 65 Australian Dtrs

BPI 252 80%
TWI 310 78%
HWI 239 73%

▶ **TYPE PROOF** (ABV August 2018)

Overall Type	111	Rear Set	95
Mammary System	116	Rear Leg Rear View	103
Stature	107	Udder Depth	114
Udder Texture	100	Fore Attachment	114
Bone Quality	111	Rear Attachment Height	117
Angularity	105	Rear Attachment Width	100
Muzzle Width	93	Centre Ligament	108
Body Depth	92	Teat Placement (front)	113
Chest Width	94	Teat Placement (rear)	104
Pin Width	105	Teat Length	93
Pin Set	99	Loin Strength	99
Foot Angle	102		

Dtr: 24 Herds: 5 75%R

AltaROBLE 011H011380

LONE-OAK-ACRES AltaROBLE-ET
 MOGUL x OBSERVER
 HOUSAM000069829747 | DOB 10/12/2012
 Genetic Code: A12

USA Proof



▶ **ASI 60**

▶ **PRODUCTION** (ABV August 2018)

Milk	753	L		
Fat	3	kg	-0.42	%
Protein	19	kg	-0.03	%
Dtr: 61 Herds: 12 90%R				

▶ **HEALTH**

Cell Count	149	87	%R
Survival	112	73	%R
Liveweight	101	76	%R
Dtr. Fertility	113	82	%R
Calving Ease	101	86	%R

▶ **WORKABILITIES**

Milking Speed	103
Temperament	103
Likability	104

Dtr: 5 Herds: 3 72%R



Crackholm AltaRABO Dasha

- ▲ Global performer, daughters milking in 8 countries
- ▲ A2A2 with genuine CE
- ▲ High component yields and great Type & Udders

BPI	242	83%
TWI	283	82%
HWI	209	76%

AltaRABO

011H011379

LONE-OAK-ACRES AltaRABO-ET
 MOGUL x OBSERVER
 HOUSAM000069829746 | DOB 10/14/2012
 Genetic Code: A22

USA Proof

A2

TYPE PROOF (ABV August 2018)

Overall Type	108	Rear Set	94
Mammary System	112	Rear Leg Rear View	106
Stature	104	Udder Depth	112
Udder Texture	101	Fore Attachment	110
Bone Quality	109	Rear Attachment Height	116
Angularity	103	Rear Attachment Width	102
Muzzle Width	95	Centre Ligament	101
Body Depth	92	Teat Placement (front)	106
Chest Width	94	Teat Placement (rear)	99
Pin Width	106	Teat Length	96
Pin Set	105	Loin Strength	96
Foot Angle	100		

Dtr: 16 Herds: 10 80%R

ASI 107

PRODUCTION (ABV August 2018)

Milk	690	L	
Fat	30	kg	0.00 %
Protein	18	kg	-0.02 %

Dtr: 190 Herds: 35 96%R

HEALTH

Cell Count	170	86 %R
Survival	110	72 %R
Liveweight	99	82 %R
Dtr. Fertility	107	83 %R
Calving Ease	102	92 %R

WORKABILITIES

Milking Speed	102
Temperament	103
Likability	105

Dtr: 35 Herds: 8 68%R



Parbro Hotrod Hannah

- ▲ Great Production and high Type
- ▲ #1 Type bull, Top 50 TPI
- ▲ A2A2
- ▲ Limited Supply

BPI	240	74%
TWI	265	73%
HWI	170	68%

AltaHOTROD

011H011493

GLEN-D-HAVEN AltaHOTROD
 JEROD x AltaIOTA
 HOUSAM000055618778 | DOB 9/5/2013
 Genetic Code: A22

USA Proof

A2

TYPE PROOF (ABV August 2018)

Overall Type	110	Rear Set	98
Mammary System	110	Rear Leg Rear View	104
Stature	117	Udder Depth	110
Udder Texture	104	Fore Attachment	106
Bone Quality	108	Rear Attachment Height	106
Angularity	107	Rear Attachment Width	102
Muzzle Width	98	Centre Ligament	112
Body Depth	94	Teat Placement (front)	109
Chest Width	95	Teat Placement (rear)	108
Pin Width	105	Teat Length	93
Pin Set	110	Loin Strength	100
Foot Angle	103		

Dtr: 0 Herds: 0 75%R

ASI 128

PRODUCTION (ABV August 2018)

Milk	804	L	
Fat	21	kg	-0.14 %
Protein	24	kg	+0.04 %

Dtr: 4 Herds: 2 83%R

HEALTH

Cell Count	144	82 %R
Survival	110	65 %R
Liveweight	108	78 %R
Dtr. Fertility	111	69 %R
Calving Ease	101	80 %R

WORKABILITIES

Milking Speed	102
Temperament	100
Likability	100

Dtr: 0 Herds: 0 73%R



Halloween Spring Gypsy

- ▲ #1 UDC bull, Top 50 TPI, +3.21 UDC
- ▲ Moderate frames, good components
- ▲ A2A2, BPI 238, 55Kg CFP

BPI 237 74%
TWI 247 74%
HWI 187 70%

▶ **TYPE PROOF** (ABV August 2018)

Overall Type	106	Rear Set	95
Mammary System	110	Rear Leg Rear View	102
Stature	105	Udder Depth	112
Udder Texture	103	Fore Attachment	105
Bone Quality	106	Rear Attachment Height	114
Angularity	102	Rear Attachment Width	98
Muzzle Width	99	Centre Ligament	108
Body Depth	93	Teat Placement (front)	105
Chest Width	99	Teat Placement (rear)	104
Pin Width	106	Teat Length	97
Pin Set	95	Loin Strength	92
Foot Angle	102		

Dtr: 9 Herds: 4 80%R

AltaSPRING

011H011437

WESTENRADE AltaSPRING
 MOGUL x GERARD
 HONLDM000949033666 | DOB 2/22/2013
 Genetic Code: A22

USA Proof



▶ **ASI 146**

▶ **PRODUCTION** (ABV August 2018)

Milk	859	L		
Fat	30	kg	-0.10	%
Protein	26	kg	+0.05	%
Dtr: 29 Herds: 8 76%R				

▶ **HEALTH**

Cell Count	824	86	%R
Survival	108	74	%R
Liveweight	101	81	%R
Dtr. Fertility	109	81	%R
Calving Ease	100	82	%R

▶ **WORKABILITIES**

Milking Speed	102
Temperament	100
Likability	102

Dtr: 0 Herds: 0 80%R



Cottonwood Burner 1776

- ▲ Moderate Frames
- ▲ CE with high components
- ▲ High semen fertility
- CONCEPT PLUS

BPI 226 70%
TWI 203 69%
HWI 201 63%

▶ **TYPE PROOF** (ABV August 2018)

Overall Type	100	Rear Set	96
Mammary System	102	Rear Leg Rear View	97
Stature	102	Udder Depth	105
Udder Texture	99	Fore Attachment	102
Bone Quality	99	Rear Attachment Height	104
Angularity	94	Rear Attachment Width	100
Muzzle Width	98	Centre Ligament	100
Body Depth	94	Teat Placement (front)	99
Chest Width	97	Teat Placement (rear)	103
Pin Width	98	Teat Length	101
Pin Set	98	Loin Strength	96
Foot Angle	99		

Dtr: 0 Herds: 0 60%R

AltaBURNER

011H011513

DA-SO-BURN AltaBURNER-ET
 SUPERSIRE x DORCY
 HOUSAM000071792974 | DOB 12/17/2013
 Genetic Code: A12

USA Proof



▶ **ASI 80**

▶ **PRODUCTION** (ABV August 2018)

Milk	-225	L		
Fat	22	kg	+0.46	%
Protein	2	kg	+0.16	%
Dtr: 0 Herds: 0 82%R				

▶ **HEALTH**

Cell Count	169	77	%R
Survival	107	58	%R
Liveweight	99	62	%R
Dtr. Fertility	109	59	%R
Calving Ease	102	85	%R

▶ **WORKABILITIES**

Milking Speed	99
Temperament	102
Likability	103

Dtr: 0 Herds: 0 68%R



- ▲ Great Health and Fertility
- ▲ Extreme Prod.
- ▲ Smaller Frames and longer teats
- ▲ Great calving trait profile, genuine calving ease

BPI 187 64%
TWI 157 69%
HWI 224 71%

AltaMEGLO 011H011499

MR BOMAZ AltaMEGLO-ET
 SUPERSIRE x FREDDIE
 HOUSAM000072615015 | DOB 9/10/2013
 Genetic Code: A22

USA Proof



TYPE PROOF (ABV August 2018)

Overall Type	98	Rear Set	104
Mammary System	98	Rear Leg Rear View	99
Stature	100	Udder Depth	101
Udder Texture	96	Fore Attachment	95
Bone Quality	100	Rear Attachment Height	101
Angularity	97	Rear Attachment Width	103
Muzzle Width	97	Centre Ligament	100
Body Depth	93	Teat Placement (front)	95
Chest Width	100	Teat Placement (rear)	102
Pin Width	96	Teat Length	101
Pin Set	93	Loin Strength	99
Foot Angle	96		

Dtr: 0 Herds: 0 58%R

ASI 108

PRODUCTION (ABV August 2018)

Milk	1064	L		
Fat	22	kg	-0.34	%
Protein	25	kg	-0.06	%

Dtr: 0 Herds: 0 82%R

HEALTH

Cell Count	114	80	%R
Survival	106	54	%R
Liveweight	98	60	%R
Dtr. Fertility	114	69	%R
Calving Ease	104	68	%R

WORKABILITIES

Milking Speed	99
Temperament	103
Likability	103

Dtr: 0 Herds: 0 64%R



Rich-Ro Everglade 11826

- ▲ Australian daughter proven
- ▲ A2A2 with great Health
- ▲ 104 Stature
108 Chest Width

BPI 222 73%
TWI 205 72%
HWI 151 68%

AltaEVERGLADE 011H011100

NO-FLA AltaEVERGLADE-ET
 MASSEY x O MAN
 H0840M003006559787 | DOB 10/5/2010
 Genetic Code: A22

USA Proof



TYPE PROOF (ABV August 2018)

Overall Type	105	Rear Set	94
Mammary System	102	Rear Leg Rear View	103
Stature	104	Udder Depth	104
Udder Texture	98	Fore Attachment	99
Bone Quality	92	Rear Attachment Height	101
Angularity	99	Rear Attachment Width	101
Muzzle Width	103	Centre Ligament	99
Body Depth	102	Teat Placement (front)	108
Chest Width	108	Teat Placement (rear)	101
Pin Width	102	Teat Length	100
Pin Set	98	Loin Strength	95
Foot Angle	103		

Dtr: 7 Herds: 2 74%R

ASI 164

PRODUCTION (ABV August 2018)

Milk	130	L		
Fat	28	kg	+0.33	%
Protein	18	kg	+0.28	%

Dtr: 24 Herds: 7 77%R

HEALTH

Cell Count	139	87	%R
Survival	104	71	%R
Liveweight	105	76	%R
Dtr. Fertility	109	83	%R
Calving Ease	101	85	%R

WORKABILITIES

Milking Speed	100
Temperament	101
Likability	101

Dtr: 2 Herds: 2 64%R

Cottonwood Leaf 915



- ▲ Top 10 TPI sire, #1 for Type top 10
- ▲ 63 kgs CFP!
- ▲ Great outcross pedigree

BPI 218 71%
TWI 220 70%
HWI 153 66%

AltaLEAF 011H011478

DE-SU AltaLEAF-ET
 AltaOAK x TRIGGER
 HOUSAM000071813417 | DOB 6/21/2013
 Genetic Code: A11

USA Proof



TYPE PROOF (ABV August 2018)

Overall Type	105	Rear Set	102
Mammary System	104	Rear Leg Rear View	103
Stature	108	Udder Depth	105
Udder Texture	98	Fore Attachment	104
Bone Quality	101	Rear Attachment Height	104
Angularity	105	Rear Attachment Width	97
Muzzle Width	102	Centre Ligament	103
Body Depth	102	Teat Placement (front)	105
Chest Width	102	Teat Placement (rear)	103
Pin Width	104	Teat Length	99
Pin Set	102	Loin Strength	98
Foot Angle	98		

Dtr: 1 Herds: 1 72%R

ASI 147

PRODUCTION (ABV August 2018)

Milk	1364	L		
Fat	29	kg	-0.43	%
Protein	34	kg	-0.06	%

Dtr: 30 Herds: 7 76%R

HEALTH

Cell Count	156	81	%R
Survival	105	64	%R
Liveweight	106	74	%R
Dtr. Fertility	108	75	%R
Calving Ease	101	61	%R

WORKABILITIES

Milking Speed	100
Temperament	101
Likability	101

Dtr: 0 Herds: 0 65%R



Bomaz Genuity 6465
2nd Lact

- ▲ The Health Trait King
- ▲ Extreme Fertility and high Survival
- ▲ Jet Black
- ▲ A2A2

BPI 216 75%
TWI 195 74%
HWI 212 69%

AltaGENUITY 011H011389

NO-FLA AltaGENUITY-ET
 EPIC x TRIGGER
 H0840M003009976647 | DOB 8/12/2012
 Genetic Code: A22

USA Proof



TYPE PROOF (ABV August 2018)

Overall Type	101	Rear Set	99
Mammary System	104	Rear Leg Rear View	103
Stature	101	Udder Depth	112
Udder Texture	98	Fore Attachment	104
Bone Quality	101	Rear Attachment Height	109
Angularity	89	Rear Attachment Width	96
Muzzle Width	96	Centre Ligament	104
Body Depth	91	Teat Placement (front)	100
Chest Width	96	Teat Placement (rear)	99
Pin Width	97	Teat Length	94
Pin Set	104	Loin Strength	99
Foot Angle	94		

Dtr: 0 Herds: 0 75%R

ASI 53

PRODUCTION (ABV August 2018)

Milk	206	L		
Fat	5	kg	-0.05	%
Protein	9	kg	+0.07	%

Dtr: 0 Herds: 0 83%R

HEALTH

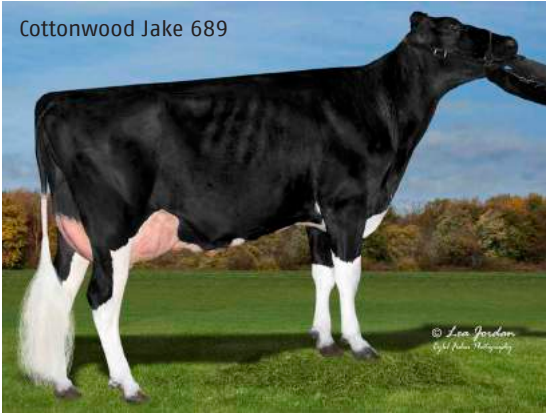
Cell Count	156	84	%R
Survival	108	66	%R
Liveweight	97	78	%R
Dtr. Fertility	117	73	%R
Calving Ease	102	86	%R

WORKABILITIES

Milking Speed	100
Temperament	102
Likability	101

Dtr: 0 Herds: 0 75%R

Cottonwood Jake 689



- ▲ 107 Type
- ▲ 109 Mamm
- ▲ High Health
- ▲ 113 Dtr Fertility
- ▲ A2A2
- ▲ Australian proven

BPI 216 78%
TWI 288 77%
HWI 214 72%

AltaJAKE

011H011422

T-SPRUCE AltaJAKE-ET
 PETRONE x OBSERVER
 HOUSAM000072395545 | DOB 2/19/2013
 Genetic Code: A22

USA Proof



TYPE PROOF (ABV August 2018)

Overall Type	107	Rear Set	102
Mammary System	109	Rear Leg Rear View	104
Stature	109	Udder Depth	110
Udder Texture	103	Fore Attachment	103
Bone Quality	109	Rear Attachment Height	110
Angularity	105	Rear Attachment Width	97
Muzzle Width	95	Centre Ligament	108
Body Depth	92	Teat Placement (front)	110
Chest Width	89	Teat Placement (rear)	103
Pin Width	104	Teat Length	95
Pin Set	97	Loin Strength	98
Foot Angle	96		

Dtr: 01 Herds: 0 76%R

ASI 28

PRODUCTION (ABV August 2018)

Milk	877 L		
Fat	16 kg	-0.31	%
Protein	12 kg	-0.21	%

Dtr: 50 Herds: 10 89%R

HEALTH

Cell Count	158	84	%R
Survival	109	68	%R
Liveweight	101	78	%R
Dtr. Fertility	113	77	%R
Calving Ease	100	89	%R

WORKABILITIES

Milking Speed	102
Temperament	103
Likability	101

Dtr: 7 Herds: 2 70%R



- ▲ #6 BPI sire all bulls August 18
- ▲ BPI 356
- ▲ Negative stature with open frames
- ▲ High components, 203 ASI

BPI 356 58%
TWI 338 56%
HWI 287 51%

AltaAROLDIS

011H012161

PEAK AltaAROLDIS-ET
 AltaROBSON x YODER
 H0840M003142181110 | DOB 4/23/2017
 Genetic Code: A22

USA Proof



TYPE PROOF (ABV August 2018)

Overall Type	103	Rear Set	97
Mammary System	103	Rear Leg Rear View	102
Stature	99	Udder Depth	106
Udder Texture	103	Fore Attachment	103
Bone Quality	106	Rear Attachment Height	104
Angularity	98	Rear Attachment Width	99
Muzzle Width	94	Centre Ligament	103
Body Depth	93	Teat Placement (front)	100
Chest Width	93	Teat Placement (rear)	98
Pin Width	92	Teat Length	96
Pin Set	97	Loin Strength	97
Foot Angle	101		

Dtr: 0 Herds: 0 43%R

ASI 203

PRODUCTION (ABV August 2018)

Milk	289 L		
Fat	44 kg	+0.49	%
Protein	22 kg	+0.28	%

Dtr: 0 Herds: 0 73%R

HEALTH

Cell Count	146	55	%R
Survival	110	42	%R
Liveweight	96	46	%R
Dtr. Fertility	108	37	%R
Calving Ease	102	23	%R

WORKABILITIES

Milking Speed	101
Temperament	103
Likability	104

Dtr: 0 Herds: 0 54%R



- ▲ Extreme BPI 354
- ▲ ASI 167
- ▲ +0.19% P
- ▲ +0.35% F
- ▲ Daughter Fertility 112

BPI 354 59%
TWI 325 58%
HWI 300 52%

AltaANCHOR 011H012163

PEAK AltaANCHOR-ET
 CHINCHI x YODER
 H0840M003133191530 | DOB 2/5/2017
 Genetic Code: A12

USA Proof



TYPE PROOF (ABV August 2018)

Overall Type	101	Rear Set	97
Mammary System	103	Rear Leg Rear View	103
Stature	102	Udder Depth	109
Udder Texture	103	Fore Attachment	102
Bone Quality	102	Rear Attachment Height	103
Angularity	99	Rear Attachment Width	99
Muzzle Width	97	Centre Ligament	103
Body Depth	95	Teat Placement (front)	103
Chest Width	97	Teat Placement (rear)	100
Pin Width	96	Teat Length	96
Pin Set	98	Loin Strength	96
Foot Angle	98		

Dtr: 0 Herds: 0 45%R

ASI 167

PRODUCTION (ABV August 2018)

Milk	336	L		
Fat	38	kg	+0.35	%
Protein	19	kg	+0.19	%
Dtr: 0 Herds: 0 74%R				

HEALTH

Cell Count	136	56	%R
Survival	112	44	%R
Liveweight	99	48	%R
Dtr. Fertility	112	43	%R
Calving Ease	101	21	%R

WORKABILITIES

Milking Speed	101
Temperament	101
Likability	102

Dtr: 0 Herds: 0 55%R



- ▲ High ranking BPI sire - 340 BPI
- ▲ Great dairy frames
- ▲ High components and improved Health A2A2

BPI 340 59%
TWI 314 57%
HWI 281 52%

AltaZONE 011H012130

PEAK AltaZONE-ET
 SUPERHERO x SILVER
 H0840M003139851853 | DOB 12/12/2016
 Genetic Code: A22

USA Proof



TYPE PROOF (ABV August 2018)

Overall Type	104	Rear Set	99
Mammary System	102	Rear Leg Rear View	102
Stature	105	Udder Depth	107
Udder Texture	100	Fore Attachment	102
Bone Quality	100	Rear Attachment Height	100
Angularity	100	Rear Attachment Width	98
Muzzle Width	96	Centre Ligament	103
Body Depth	98	Teat Placement (front)	104
Chest Width	101	Teat Placement (rear)	100
Pin Width	102	Teat Length	95
Pin Set	102	Loin Strength	99
Foot Angle	100		

Dtr: 0 Herds: 0 46%R

ASI 134

PRODUCTION (ABV August 2018)

Milk	228	L		
Fat	34	kg	0.35	%
Protein	14	kg	0.15	%
Dtr: 0 Herds: 0 73%R				

HEALTH

Cell Count	164	56	%R
Survival	112	44	%R
Liveweight	103	48	%R
Dtr. Fertility	117	42	%R
Calving Ease	101	32	%R

WORKABILITIES

Milking Speed	101
Temperament	102
Likability	104

Dtr: 0 Herds: 0 55%R



- ▲ Moderate frames with extreme CFP at 65 kgs
- ▲ A2A2 with a brilliant calving trait profile
- ▲ AltaTOPSHOT son with high BPI 330

BPI 331 60%
TWI 270 58%
HWI 242 53%

AltaGILMORE 011H012168

PEAK AltaGILMORE-ET
 AltaTOPSHOT x YODER
 H0840M003138498826 | DOB 2/28/2017
 Genetic Code: A22

USA Proof



TYPE PROOF (ABV August 2018)

Overall Type	97	Rear Set	99
Mammary System	98	Rear Leg Rear View	101
Stature	105	Udder Depth	105
Udder Texture	101	Fore Attachment	101
Bone Quality	102	Rear Attachment Height	98
Angularity	97	Rear Attachment Width	97
Muzzle Width	92	Centre Ligament	102
Body Depth	89	Teat Placement (front)	96
Chest Width	93	Teat Placement (rear)	98
Pin Width	99	Teat Length	99
Pin Set	99	Loin Strength	97
Foot Angle	97		

Dtr: 0 Herds: 0 47%R

ASI 218

PRODUCTION (ABV August 2018)

Milk	244	L		
Fat	41	kg	+0.44	%
Protein	24	kg	+0.34	%
Dtr: 0 Herds: 0 74%R				

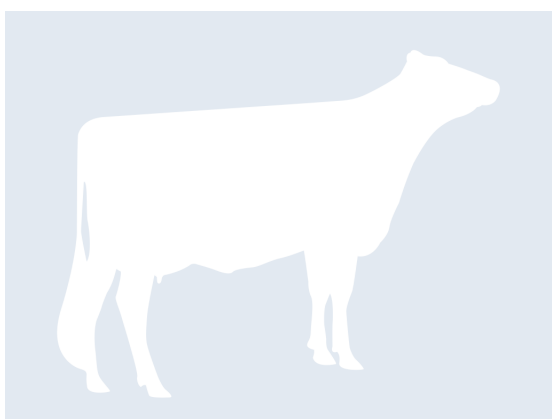
HEALTH

Cell Count	152	56	%R
Survival	107	44	%R
Liveweight	98	50	%R
Dtr. Fertility	114	43	%R
Calving Ease	102	24	%R

WORKABILITIES

Milking Speed	101
Temperament	103
Likability	103

Dtr: 0 Herds: 0 56%R



- ▲ High Ranking BPI sire 330 BPI
- ▲ Moderate frames with brilliant Rear Udders
- ▲ A2A2 bull
- ▲ High NM\$ 927

BPI 330 61%
TWI 308 59%
HWI 269 54%

AltaSTAFFORD 011H012258

PEAK AltaSTAFFORD-ET
 CHARLEY x AltaSPRING
 H0840M003145229768 | DOB 7/30/2017
 Genetic Code: A22

USA Proof



TYPE PROOF (ABV August 2018)

Overall Type	102	Rear Set	99
Mammary System	102	Rear Leg Rear View	101
Stature	99	Udder Depth	106
Udder Texture	100	Fore Attachment	102
Bone Quality	104	Rear Attachment Height	103
Angularity	99	Rear Attachment Width	100
Muzzle Width	98	Centre Ligament	103
Body Depth	98	Teat Placement (front)	100
Chest Width	98	Teat Placement (rear)	99
Pin Width	96	Teat Length	96
Pin Set	96	Loin Strength	101
Foot Angle	99		

Dtr: 0 Herds: 0 48%R

ASI 169

PRODUCTION (ABV August 2018)

Milk	489	L		
Fat	35	kg	+0.20	%
Protein	22	kg	+0.18	%
Dtr: 0 Herds: 0 75%R				

HEALTH

Cell Count	152	59	%R
Survival	110	46	%R
Liveweight	99	51	%R
Dtr. Fertility	109	42	%R
Calving Ease	102	29	%R

WORKABILITIES

Milking Speed	100
Temperament	103
Likability	103

Dtr: 0 Herds: 0 58%R



- ▲ High ranking Polled carrier
- ▲ 112 Daughter Fertility
- ▲ High component yields +24 kg P

BPI 316 63%
TWI 295 62%
HWI 268 57%

AltaMIGHTY P 011H011827

PEAK AltaMIGHTY P-ET
 POWERBALL-P x SUPERSIRE
 H0840M003131131453 | DOB 8/23/2015
 Genetic Code: A12

USA Proof



TYPE PROOF (ABV August 2018)

Overall Type	104	Rear Set	102
Mammary System	104	Rear Leg Rear View	102
Stature	106	Udder Depth	106
Udder Texture	103	Fore Attachment	101
Bone Quality	111	Rear Attachment Height	104
Angularity	100	Rear Attachment Width	100
Muzzle Width	92	Centre Ligament	100
Body Depth	90	Teat Placement (front)	104
Chest Width	89	Teat Placement (rear)	102
Pin Width	102	Teat Length	98
Pin Set	107	Loin Strength	101
Foot Angle	99		

Dtr: 0 Herds: 0 52%R

ASI 158

PRODUCTION (ABV August 2018)

Milk	429 L		
Fat	21 kg	+0.04	%
Protein	24 kg	+0.23	%
Dtr: 0 Herds: 0 76%R			

HEALTH

Cell Count	142	63	%R
Survival	110	50	%R
Liveweight	98	55	%R
Dtr. Fertility	112	50	%R
Calving Ease	100	50	%R

WORKABILITIES

Milking Speed	102
Temperament	102
Likability	103

Dtr: 0 Herds: 0 61%R



- ▲ A2A2 and high BPI 314
- ▲ 179 ASI, 59 kg CFP
- ▲ 114 Daughter Fertility

BPI 314 60%
TWI 255 59%
HWI 253 54%

AltaSTOKED 011H012131

PEAK AltaSTOKED-ET
 SUPERHERO x YODER
 H0840M003138498974 | DOB 12/14/2016
 Genetic Code: A22

USA Proof



TYPE PROOF (ABV August 2018)

Overall Type	99	Rear Set	98
Mammary System	98	Rear Leg Rear View	103
Stature	103	Udder Depth	108
Udder Texture	101	Fore Attachment	98
Bone Quality	105	Rear Attachment Height	101
Angularity	97	Rear Attachment Width	94
Muzzle Width	97	Centre Ligament	103
Body Depth	92	Teat Placement (front)	100
Chest Width	94	Teat Placement (rear)	98
Pin Width	97	Teat Length	94
Pin Set	95	Loin Strength	93
Foot Angle	98		

Dtr: 0 Herds: 0 47%R

ASI 179

PRODUCTION (ABV August 2018)

Milk	325 L		
Fat	39 kg	+0.37	%
Protein	20 kg	+0.22	%
Dtr: 0 Herds: 0 74%R			

HEALTH

Cell Count	166	58	%R
Survival	108	45	%R
Liveweight	98	50	%R
Dtr. Fertility	114	44	%R
Calving Ease	101	31	%R

WORKABILITIES

Milking Speed	101
Temperament	102
Likability	103

Dtr: 0 Herds: 0 57%R



- ▲ CONCEPT PLUS and NEW Sexed CONCEPT PLUS
- ▲ Moderate Frames, wide Rear Teats
- ▲ Exceptional Health Traits 112 Daughter Fertility

BPI 296 63%
TWI 249 61%
HWI 253 56%

AltaNIXER

011H011758

PEAK AltaNIXER-ET
 YODER x SUPERSIRE
 H0840M003125434762 | DOB 4/5/2015
 Genetic Code: A22

USA Proof



TYPE PROOF (ABV August 2018)

Overall Type	99	Rear Set	96
Mammary System	100	Rear Leg Rear View	101
Stature	101	Udder Depth	106
Udder Texture	100	Fore Attachment	98
Bone Quality	99	Rear Attachment Height	104
Angularity	97	Rear Attachment Width	100
Muzzle Width	97	Centre Ligament	101
Body Depth	93	Teat Placement (front)	98
Chest Width	100	Teat Placement (rear)	99
Pin Width	98	Teat Length	95
Pin Set	103	Loin Strength	97
Foot Angle	98		

Dtr: 0 Herds: 0 51%R

ASI 133

PRODUCTION (ABV August 2018)

Milk	445	L		
Fat	27	kg	+0.12	%
Protein	19	kg	+0.13	%
Dtr: 0 Herds: 0 76%R				

HEALTH

Cell Count	139	62	%R
Survival	110	49	%R
Liveweight	99	54	%R
Dtr. Fertility	112	50	%R
Calving Ease	103	58	%R

WORKABILITIES

Milking Speed	101
Temperament	102
Likability	103

Dtr: 0 Herds: 0 58%R



- ▲ A2A2 with extreme Health
- ▲ Brilliant Mammary linear profile, Mamm 109
- ▲ High BPI 296

BPI 296 62%
TWI 280 60%
HWI 252 55%

AltaACTOR

011H012088

PEAK AltaACTOR-ET
 JETT x AltaKADO
 H0840M003138498889 | DOB 9/4/2016
 Genetic Code: A22

USA Proof



TYPE PROOF (ABV August 2018)

Overall Type	103	Rear Set	100
Mammary System	109	Rear Leg Rear View	100
Stature	102	Udder Depth	107
Udder Texture	104	Fore Attachment	102
Bone Quality	107	Rear Attachment Height	109
Angularity	99	Rear Attachment Width	107
Muzzle Width	96	Centre Ligament	106
Body Depth	93	Teat Placement (front)	102
Chest Width	95	Teat Placement (rear)	102
Pin Width	98	Teat Length	97
Pin Set	102	Loin Strength	100
Foot Angle	98		

Dtr: 0 Herds: 0 48%R

ASI 149

PRODUCTION (ABV August 2018)

Milk	629	L		
Fat	22	kg	-0.08	%
Protein	25	kg	+0.15	%
Dtr: 0 Herds: 0 76%R				

HEALTH

Cell Count	154	60	%R
Survival	108	46	%R
Liveweight	98	50	%R
Dtr. Fertility	112	45	%R
Calving Ease	102	28	%R

WORKABILITIES

Milking Speed	101
Temperament	103
Likability	104

Dtr: 0 Herds: 0 58%R



- ▲ High BPI 289
- ▲ 106 Type 108 Mammary ABV(g)
- ▲ Great SCS and Milking Speed ratings

BPI 289 63%
TWI 297 62%
HWI 221 57%

AltaTOOHOT 011H011813

PEAK AltaTOOHOT-ET
 AltaHOTROD x MCCUTCHEN
 H0840M003129128854 | DOB 7/4/2015
 Genetic Code: A12

USA Proof



ASI 156

PRODUCTION (ABV August 2018)

Milk	-37	L		
Fat	27	kg	+0.41	%
Protein	15	kg	+0.30	%
Dtr: 0 Herds: 0 77%R				

HEALTH

Cell Count	153	63	%R
Survival	110	48	%R
Liveweight	104	56	%R
Dtr. Fertility	108	50	%R
Calving Ease	102	67	%R

WORKABILITIES

Milking Speed	104
Temperament	101
Likability	102

Dtr: 0 Herds: 0 61%R

TYPE PROOF (ABV August 2018)

Overall Type	106	Rear Set	100
Mammary System	108	Rear Leg Rear View	100
Stature	112	Udder Depth	114
Udder Texture	105	Fore Attachment	105
Bone Quality	110	Rear Attachment Height	103
Angularity	103	Rear Attachment Width	99
Muzzle Width	95	Centre Ligament	107
Body Depth	95	Teat Placement (front)	110
Chest Width	93	Teat Placement (rear)	105
Pin Width	103	Teat Length	88
Pin Set	99	Loin Strength	100
Foot Angle	101		

Dtr: 0 Herds: 0 52%R



Dam: Bomaz Bob 6207

- ▲ The Global Transmitter
- ▲ A2A2 BB CONCEPT PLUS sire
- ▲ Great components and high health traits

BPI 274 64%
TWI 260 62%
HWI 211 57%

AltaROBSON 011H011778

BOMAZ AltaROBSON-ET
 RUBICON x BOB
 H0USAM000073953484 | DOB 8/24/2015
 Genetic Code: A22

USA Proof



ASI 152

PRODUCTION (ABV August 2018)

Milk	227	L		
Fat	30	kg	+0.29	%
Protein	17	kg	+0.21	%
Dtr: 0 Herds: 0 78%R				

HEALTH

Cell Count	144	63	%R
Survival	108	50	%R
Liveweight	101	55	%R
Dtr. Fertility	111	50	%R
Calving Ease	102	63	%R

WORKABILITIES

Milking Speed	102
Temperament	103
Likability	103

Dtr: 0 Herds: 0 60%R

TYPE PROOF (ABV August 2018)

Overall Type	103	Rear Set	93
Mammary System	103	Rear Leg Rear View	102
Stature	105	Udder Depth	108
Udder Texture	101	Fore Attachment	104
Bone Quality	102	Rear Attachment Height	103
Angularity	97	Rear Attachment Width	101
Muzzle Width	98	Centre Ligament	102
Body Depth	94	Teat Placement (front)	101
Chest Width	97	Teat Placement (rear)	99
Pin Width	98	Teat Length	97
Pin Set	97	Loin Strength	101
Foot Angle	104		

Dtr: 0 Herds: 0 53%R



- ▲ High component yields
- ▲ Exceptional Health trait profile 116 Daughter Fertility
- ▲ A2A2 BB
- ▲ CONCEPT PLUS sire

BPI 268 64%
TWI 215 62%
HWI 211 57%

AltaTOPSHOT 011H011779

BOMAZ AltaTOPSHOT-ET
 SUPERSHOT x AltaEMBASSY
 HOUSAM000073953444 | DOB 6/10/2015
 Genetic Code: A22

USA Proof



ASI 133

PRODUCTION (ABV August 2018)

Milk	124 L		
Fat	26 kg	+0.30	%
Protein	14 kg	+0.21	%
Dtr: 0 Herds: 0 76%R			

HEALTH

Cell Count	162	64	%R
Survival	107	52	%R
Liveweight	100	58	%R
Dtr. Fertility	116	51	%R
Calving Ease	102	69	%R

WORKABILITIES

Milking Speed	100
Temperament	103
Likability	103

Dtr: 0 Herds: 0 62%R

TYPE PROOF (ABV August 2018)

Overall Type	99	Rear Set	103
Mammary System	99	Rear Leg Rear View	101
Stature	104	Udder Depth	105
Udder Texture	100	Fore Attachment	99
Bone Quality	102	Rear Attachment Height	99
Angularity	96	Rear Attachment Width	100
Muzzle Width	97	Centre Ligament	103
Body Depth	94	Teat Placement (front)	95
Chest Width	98	Teat Placement (rear)	98
Pin Width	102	Teat Length	105
Pin Set	93	Loin Strength	99
Foot Angle	98		

Dtr: 0 Herds: 0 55%R



- ▲ Smaller frames with genuine Ce
- ▲ High semen fertility and great daughter Fertility
- ▲ High components

BPI 266 62%
TWI 226 61%
HWI 234 56%

AltaWORMONT 011H011666

MELARRY AltaWORMONT-ET
 SUPERSHOT x SHAN
 H0840M003128713944 | DOB 2/3/2015
 Genetic Code: A11

USA Proof



ASI 102

PRODUCTION (ABV August 2018)

Milk	447 L		
Fat	23 kg	+0.05	%
Protein	15 kg	+0.06	%
Dtr: 0 Herds: 0 76%R			

HEALTH

Cell Count	167	62	%R
Survival	108	48	%R
Liveweight	97	54	%R
Dtr. Fertility	115	48	%R
Calving Ease	104	59	%R

WORKABILITIES

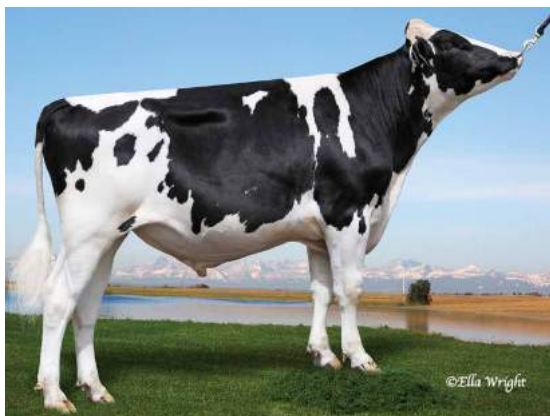
Milking Speed	99
Temperament	102
Likability	102

Dtr: 0 Herds: 0 59%R

TYPE PROOF (ABV August 2018)

Overall Type	100	Rear Set	101
Mammary System	101	Rear Leg Rear View	101
Stature	99	Udder Depth	107
Udder Texture	98	Fore Attachment	100
Bone Quality	102	Rear Attachment Height	100
Angularity	94	Rear Attachment Width	97
Muzzle Width	99	Centre Ligament	102
Body Depth	95	Teat Placement (front)	106
Chest Width	98	Teat Placement (rear)	101
Pin Width	98	Teat Length	104
Pin Set	98	Loin Strength	98
Foot Angle	102		

Dtr: 0 Herds: 0 52%R



- ▲ Genuine CE 104
- ▲ Moderate frames with strength
- ▲ Great Daughter Fertility 113

BPI 255 63%
TWI 225 61%
HWI 216 56%

AltaGHILLIE 011H011841

PEAK AltaGHILLIE-ET
 AltaGENUITY x SUPERSIRE
 H0840M003131131499 | DOB 10/21/2015
 Genetic Code: A12

USA Proof



TYPE PROOF (ABV August 2018)

Overall Type	101	Rear Set	100
Mammary System	104	Rear Leg Rear View	100
Stature	99	Udder Depth	106
Udder Texture	99	Fore Attachment	101
Bone Quality	104	Rear Attachment Height	107
Angularity	94	Rear Attachment Width	103
Muzzle Width	97	Centre Ligament	101
Body Depth	95	Teat Placement (front)	100
Chest Width	98	Teat Placement (rear)	100
Pin Width	100	Teat Length	99
Pin Set	104	Loin Strength	98
Foot Angle	94		

Dtr: 0 Herds: 0 51%R

ASI 116

PRODUCTION (ABV August 2018)

Milk	601 L		
Fat	19 kg		-0.09 %
Protein	20 kg		+0.08 %

Dtr: 0 Herds: 0 77%R

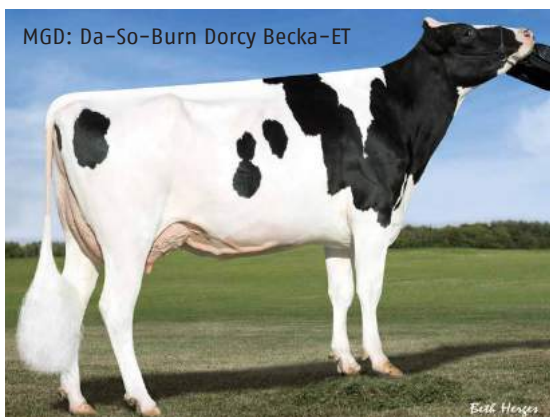
HEALTH

Cell Count	151	63 %R
Survival	108	48 %R
Liveweight	98	54 %R
Dtr. Fertility	113	48 %R
Calving Ease	104	55 %R

WORKABILITIES

Milking Speed	101
Temperament	103
Likability	103

Dtr: 0 Herds: 0 60%R



MGD: Da-So-Burn Dorcy Becka-ET

- ▲ High semen fertility CONCEPT PLUS rated
- ▲ High Health trait profile
- ▲ Great components

BPI 232 64%
TWI 203 62%
HWI 198 57%

AltaBORONDA 011H011694

PEAK AltaBORONDA-ET
 MONTEREY x NUMERO UNO
 H0840M003128043658 | DOB 1/10/2015
 Genetic Code: A11

USA Proof



TYPE PROOF (ABV August 2018)

Overall Type	100	Rear Set	101
Mammary System	104	Rear Leg Rear View	99
Stature	106	Udder Depth	111
Udder Texture	103	Fore Attachment	102
Bone Quality	106	Rear Attachment Height	108
Angularity	97	Rear Attachment Width	99
Muzzle Width	88	Centre Ligament	103
Body Depth	93	Teat Placement (front)	99
Chest Width	91	Teat Placement (rear)	100
Pin Width	101	Teat Length	95
Pin Set	89	Loin Strength	92
Foot Angle	96		

Dtr: 0 Herds: 0 56%R

ASI 121

PRODUCTION (ABV August 2018)

Milk	231 L		
Fat	26 kg		+0.24 %
Protein	14 kg		+0.15 %

Dtr: 0 Herds: 0 76%R

HEALTH

Cell Count	140	63 %R
Survival	106	50 %R
Liveweight	99	58 %R
Dtr. Fertility	111	49 %R
Calving Ease	102	62 %R

WORKABILITIES

Milking Speed	102
Temperament	101
Likability	102

Dtr: 0 Herds: 0 63%R



- ▲ Extreme Health & Fertility
- ▲ AltaSPRING son
- ▲ Smaller stature with open ribs
- ▲ CONCEPT PLUS and A2A2

BPI 230 65%
TWI 216 63%
HWI 224 58%

AltaKARMA

011H011838

PEAK AltaKARMA-ET
 AltaSPRING x CASHCOIN
 H0840M003133371421 | DOB 10/7/2015
 Genetic Code: A22

USA Proof



TYPE PROOF (ABV August 2018)

Overall Type	101	Rear Set	99
Mammary System	105	Rear Leg Rear View	97
Stature	103	Udder Depth	110
Udder Texture	102	Fore Attachment	105
Bone Quality	106	Rear Attachment Height	110
Angularity	98	Rear Attachment Width	96
Muzzle Width	93	Centre Ligament	104
Body Depth	86	Teat Placement (front)	100
Chest Width	95	Teat Placement (rear)	105
Pin Width	101	Teat Length	93
Pin Set	97	Loin Strength	95
Foot Angle	97		

Dtr: 0 Herds: 0 55%R

ASI 54

PRODUCTION (ABV August 2018)

Milk	612	L		
Fat	12	kg	-0.20	%
Protein	14	kg	-0.06	%
Dtr: 0 Herds: 0 78%R				

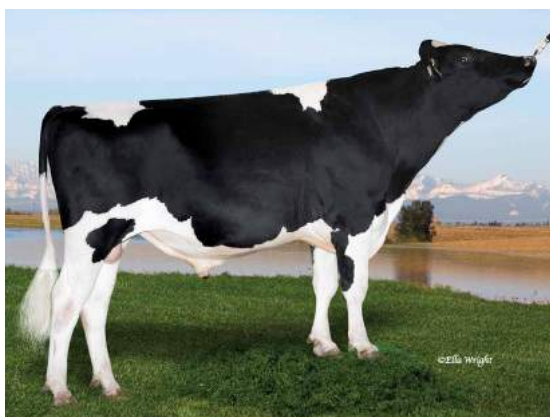
HEALTH

Cell Count	141	65	%R
Survival	110	52	%R
Liveweight	97	58	%R
Dtr. Fertility	113	52	%R
Calving Ease	101	37	%R

WORKABILITIES

Milking Speed	102
Temperament	102
Likability	103

Dtr: 0 Herds: 0 62%R



- ▲ Moderate frames with high components
- ▲ Great Health traits including 111 daughter fertility
- ▲ CONCEPT PLUS
- ▲ A2A2

BPI 226 65%
TWI 210 64%
HWI 222 59%

Alta1STLOOK

011H011704

BRYHILL Alta1STLOOK
 Alta1STCLASS x SUPERSIRE
 H0CANM000109195632 | DOB 12/22/2014
 Genetic Code: A22

USA Proof



TYPE PROOF (ABV August 2018)

Overall Type	102	Rear Set	99
Mammary System	104	Rear Leg Rear View	98
Stature	102	Udder Depth	108
Udder Texture	102	Fore Attachment	101
Bone Quality	108	Rear Attachment Height	104
Angularity	98	Rear Attachment Width	99
Muzzle Width	91	Centre Ligament	102
Body Depth	94	Teat Placement (front)	106
Chest Width	94	Teat Placement (rear)	102
Pin Width	101	Teat Length	98
Pin Set	103	Loin Strength	99
Foot Angle	99		

Dtr: 0 Herds: 0 58%R

ASI 47

PRODUCTION (ABV August 2018)

Milk	52	L		
Fat	20	kg	+0.25	%
Protein	2	kg	+0.02	%
Dtr: 0 Herds: 0 76%R				

HEALTH

Cell Count	151	97	%R
Survival	110	54	%R
Liveweight	98	60	%R
Dtr. Fertility	111	54	%R
Calving Ease	102	63	%R

WORKABILITIES

Milking Speed	100
Temperament	101
Likability	102

Dtr: 0 Herds: 0 64%R



- ▲ High semen fertility CONCEPT PLUS rated
- ▲ A2A2, 116 Daughter Fertility
- ▲ Moderate, stronger frames

BPI 224 63%
TWI 181 62%
HWI 205 56%

AltaEXEMPLAR 011H011747

NO-FLA AltaEXEMPLAR-ET
 AltaGENUITY x SUPERSIRE
 H0840M003129449398 | DOB 5/13/2015
 Genetic Code: A22

USA Proof



ASI 82

PRODUCTION (ABV August 2018)

Milk	439 L		
Fat	11 kg		-0.11 %
Protein	15 kg		+0.07 %

Dtr: 0 Herds: 0 76%R

HEALTH

Cell Count	153	63 %R
Survival	107	49 %R
Liveweight	98	54 %R
Dtr. Fertility	116	50 %R
Calving Ease	102	60 %R

WORKABILITIES

Milking Speed	98
Temperament	102
Likability	102

Dtr: 0 Herds: 0 60%R

TYPE PROOF (ABV August 2018)

Overall Type	99	Rear Set	100
Mammary System	100	Rear Leg Rear View	100
Stature	98	Udder Depth	107
Udder Texture	98	Fore Attachment	100
Bone Quality	104	Rear Attachment Height	103
Angularity	96	Rear Attachment Width	99
Muzzle Width	95	Centre Ligament	101
Body Depth	94	Teat Placement (front)	99
Chest Width	98	Teat Placement (rear)	102
Pin Width	96	Teat Length	97
Pin Set	101	Loin Strength	101
Foot Angle	95		

Dtr: 0 Herds: 0 52%R



- ▲ Great Type and UDC with beautiful dairy frames
- ▲ CONCEPT PLUS
- ▲ Great fertility and high Health
- ▲ A2A2 and 113 Daughter Fertility

BPI 219 65%
TWI 199 63%
HWI 195 58%

AltaCORDIAL 011H011707

PEAK LC AltaCORDIAL-ET
 AltaSPRING x SUPERSIRE
 H0NLDM000751487024 | DOB 5/23/2015
 Genetic Code: A22

USA Proof



ASI 67

PRODUCTION (ABV August 2018)

Milk	498 L		
Fat	15 kg		-0.09 %
Protein	13 kg		-0.01 %

Dtr: 0 Herds: 0 77%R

HEALTH

Cell Count	130	65 %R
Survival	109	52 %R
Liveweight	99	57 %R
Dtr. Fertility	113	52 %R
Calving Ease	100	67 %R

WORKABILITIES

Milking Speed	100
Temperament	102
Likability	103

Dtr: 0 Herds: 0 62%R

TYPE PROOF (ABV August 2018)

Overall Type	103	Rear Set	101
Mammary System	104	Rear Leg Rear View	103
Stature	101	Udder Depth	107
Udder Texture	99	Fore Attachment	101
Bone Quality	104	Rear Attachment Height	108
Angularity	96	Rear Attachment Width	100
Muzzle Width	98	Centre Ligament	104
Body Depth	94	Teat Placement (front)	100
Chest Width	100	Teat Placement (rear)	102
Pin Width	103	Teat Length	94
Pin Set	100	Loin Strength	98
Foot Angle	102		

Dtr: 0 Herds: 0 54%R

Dam: Miller-FF Ssire Exotic-ET



- ▲ Extreme semen fertility CONCEPT PLUS rated
- ▲ A2A2
- ▲ 115 Daughter Fertility

BPI 215 64%
TWI 170 63%
HWI 184 58%

AltaKERMIT 011H011672

PEAK AltaKERMIT-ET
 KINGBOY x SUPERSIRE
 H0840M003126668077 | DOB 2/18/2015
 Genetic Code: A22

USA Proof



ASI 53

PRODUCTION (ABV August 2018)

Milk	583	L		
Fat	21	kg	-0.06	%
Protein	11	kg	-0.10	%

Dtr: 0 Herds: 0 76%R

HEALTH

Cell Count	169	65	%R
Survival	110	51	%R
Liveweight	101	58	%R
Dtr. Fertility	115	52	%R
Calving Ease	101	67	%R

WORKABILITIES

Milking Speed	99
Temperament	101
Likability	102

Dtr: 0 Herds: 0 62%R

TYPE PROOF (ABV August 2018)

Overall Type	98	Rear Set	103
Mammary System	100	Rear Leg Rear View	99
Stature	106	Udder Depth	109
Udder Texture	98	Fore Attachment	99
Bone Quality	102	Rear Attachment Height	103
Angularity	95	Rear Attachment Width	96
Muzzle Width	94	Centre Ligament	103
Body Depth	93	Teat Placement (front)	101
Chest Width	98	Teat Placement (rear)	100
Pin Width	100	Teat Length	98
Pin Set	95	Loin Strength	97
Foot Angle	98		

Dtr: 0 Herds: 0 55%R



- ▲ High component RED bull carrying the polled gene
- ▲ High component yields
- ▲ Moderate, stronger frames

BPI 209 62%
TWI 166 61%
HWI 156 56%

AltaBRICK P-RED 011H000584

STERK AltaBRICK P-RED
 AltaCASUAL P x AIKMAN
 H0NLDM000662990464 | DOB 12/5/2015
 Genetic Code: A22

USA Proof



ASI 138

PRODUCTION (ABV August 2018)

Milk	92	L		
Fat	34	kg	+0.43	%
Protein	13	kg	+0.19	%

Dtr: 0 Herds: 0 77%R

HEALTH

Cell Count	140	62	%R
Survival	104	47	%R
Liveweight	98	52	%R
Dtr. Fertility	112	47	%R
Calving Ease	100	44	%R

WORKABILITIES

Milking Speed	98
Temperament	101
Likability	102

Dtr: 0 Herds: 0 58%R

TYPE PROOF (ABV August 2018)

Overall Type	100	Rear Set	97
Mammary System	100	Rear Leg Rear View	100
Stature	100	Udder Depth	103
Udder Texture	97	Fore Attachment	99
Bone Quality	103	Rear Attachment Height	103
Angularity	100	Rear Attachment Width	99
Muzzle Width	98	Centre Ligament	98
Body Depth	95	Teat Placement (front)	99
Chest Width	99	Teat Placement (rear)	95
Pin Width	96	Teat Length	100
Pin Set	102	Loin Strength	100
Foot Angle	102		

Dtr: 0 Herds: 0 49%R



- ▲ Alta ADVANTAGE Only Bull
- ▲ BPI 331, ASI 213
- ▲ 44Kg F +0.76%
- ▲ A2A2

BPI 331 58%
TWI 329 56%
HWI 261 51%

AltaNIXIE

011H012285

AARDEMA AltaNIXIE-ET
 AltaROBSON x YODER
 H0840M003138766709 | DOB 5/22/2017
 Genetic Code: A22

USA Proof



TYPE PROOF (ABV August 2018)

Overall Type	104	Rear Set	97
Mammary System	105	Rear Leg Rear View	102
Stature	104	Udder Depth	112
Udder Texture	105	Fore Attachment	103
Bone Quality	110	Rear Attachment Height	104
Angularity	100	Rear Attachment Width	100
Muzzle Width	92	Centre Ligament	103
Body Depth	93	Teat Placement (front)	106
Chest Width	92	Teat Placement (rear)	101
Pin Width	98	Teat Length	91
Pin Set	98	Loin Strength	96
Foot Angle	102		

Dtr: 0 Herds: 0 44%R

ASI 213

PRODUCTION (ABV August 2018)

Milk	-205	L		
Fat	44	kg	+0.76	%
Protein	16	kg	+0.42	%
Dtr: 0 Herds: 0 73%R				

HEALTH

Cell Count	144	55	%R
Survival	109	42	%R
Liveweight	98	47	%R
Dtr. Fertility	105	38	%R
Calving Ease	102	22	%R

WORKABILITIES

Milking Speed	103
Temperament	102
Likability	103

Dtr: 0 Herds: 0 54%R



- ▲ Breed Leading TPI Sire
- ▲ Alta ADVANTAGE Sexed Semen Only
- ▲ A2A2

BPI 308 58%
TWI 279 56%
HWI 243 51%

AltaLAWSON

011H012157

PEAK AltaLAWSON-ET
 AltaROBSON x DELTA
 H0840M003142181099 | DOB 4/14/2017
 Genetic Code: A22

USA Proof



TYPE PROOF (ABV August 2018)

Overall Type	101	Rear Set	99
Mammary System	100	Rear Leg Rear View	101
Stature	102	Udder Depth	109
Udder Texture	104	Fore Attachment	99
Bone Quality	106	Rear Attachment Height	101
Angularity	98	Rear Attachment Width	96
Muzzle Width	94	Centre Ligament	102
Body Depth	93	Teat Placement (front)	102
Chest Width	88	Teat Placement (rear)	100
Pin Width	96	Teat Length	94
Pin Set	101	Loin Strength	98
Foot Angle	100		

Dtr: 0 Herds: 0 44%R

ASI 178

PRODUCTION (ABV August 2018)

Milk	-165	L		
Fat	39	kg	+0.66	%
Protein	13	kg	+0.34	%
Dtr: 0 Herds: 0 73%R				

HEALTH

Cell Count	150	55	%R
Survival	109	42	%R
Liveweight	97	47	%R
Dtr. Fertility	107	38	%R
Calving Ease	102	23	%R

WORKABILITIES

Milking Speed	101
Temperament	102
Likability	103

Dtr: 0 Herds: 0 54%R



- ▲ Alta ADVANTAGE Only Bull
- ▲ 49Kg F +0.54,
- ▲ 292 BPI
- ▲ 105 Type, 107 Mamm
- ▲ A2A2

BPI 292 60%
TWI 302 59%
HWI 223 54%

AltaVELVET 011H012211

PEAK AltaVELVET-ET
 HOTLINE x AltaSPRING
 H0840M00314-2181523 | DOB 4/30/2017
 Genetic Code: A22

USA Proof



TYPE PROOF (ABV August 2018)

Overall Type	105	Rear Set	96
Mammary System	107	Rear Leg Rear View	104
Stature	107	Udder Depth	109
Udder Texture	104	Fore Attachment	106
Bone Quality	108	Rear Attachment Height	106
Angularity	101	Rear Attachment Width	100
Muzzle Width	95	Centre Ligament	102
Body Depth	95	Teat Placement (front)	106
Chest Width	97	Teat Placement (rear)	101
Pin Width	100	Teat Length	93
Pin Set	93	98	97
Foot Angle	100		

Dtr: 0 Herds: 0 48%R

ASI 167

PRODUCTION (ABV August 2018)

Milk	258	L	
Fat	49	kg	+0.54 %
Protein	15	kg	+0.16 %
<i>Dtr: 0 Herds: 0 75%R</i>			

HEALTH

Cell Count	162	58	%R
Survival	108	46	%R
Liveweight	102	50	%R
Dtr. Fertility	107	42	%R
Calving Ease	101	27	%R

WORKABILITIES

Milking Speed	100
Temperament	101
Likability	102

Dtr: 0 Herds: 0 57%R